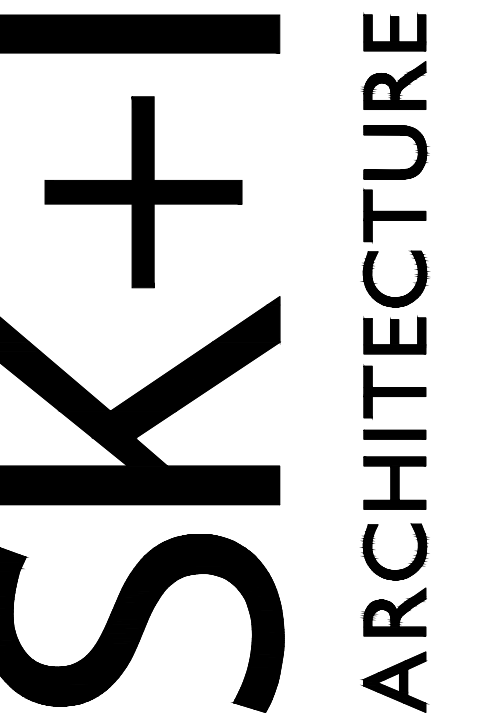


4 EYE STREET, SE

PERMIT SET
WASHINGTON, D.C.

Sheet List Table

Sheet Number	Sheet Title
L000	COVER SHEET
L001	GENERAL NOTES
L002	REFERENCE PLAN
L003	MATERIALS PLAN
L004	MATERIALS PLAN
L005	MATERIALS PLAN
L006	HARDSCAPE DETAILS
L007	HARDSCAPE DETAILS
L008	HARDSCAPE DETAILS
L009	HARDSCAPE DETAILS
L011	PLANTING PLAN
L012	PLANTING PLAN
L013	PLANTING SCHEDULE
L014	PLANTING NOTES
L015	SOIL SPECIFICATIONS
L016	PLANTING DETAILS



4600 East West Highway, Suite 700
Bethesda MD 20814
T 301.654.9300 / F 301.654.7211
company@skiarch.com

STRUCTURAL ENGINEER
EHLERT BRYAN
1451 Dolley Madison Blvd, Suite 220
McLean, VA 22101
T 703.827.9552
wbryan@ehlerbryan.com

MP CONSULTANT
HURST ENGINEERS, INC
308 Hillwood Ave
Falls Church, VA 22046
T 703.534.7872
ajye@hurstengineers.com

ELECTRICAL DESIGN BUILD
POWER DESIGN
11600 Ninth Street North
St. Petersburg, FL 33716
T 727.568.7951
mzeiler@powerdesigninc.us

CIVIL ENGINEER
WILES MENSCH CORPORATION
739 8th Street, SE 2nd Floor
Washington, DC 20003
T 703.391.7600 / D 202.552.0241
mlopez@wilesmensch.com

LANDSCAPE ARCHITECTS
LANDESIGN, INC
200 South Peyton Street
Alexandria, VA 22314
T 703.549.7784
mclark@landdesign.com

INTERIOR DESIGNERS
SK+I Architectural Design Group LLC
4600 East West Highway, Suite 700
Bethesda, MD 20814
T 301.654.9300
mradulescu@skiarch.com

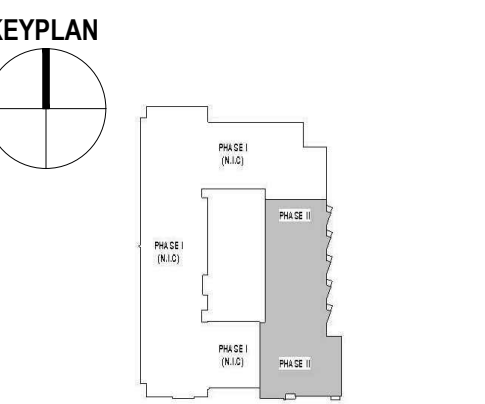
IFC SET

PROJECT NAME
4 EYE STREET, SE
WASHINGTON, DC

PROJECT NUMBER RCP09
OWNER
CRESCENT-RCP VENTURE 1, LLC
227 West Trade Street, Suite 1000
Charlotte, NC 28202
D (202) 465-9455 / M (703) 216-2029
se@rcpdevelopment.com

MARK	DATE	DESCRIPTION
-	10.27.2017	DD SET
-	02.02.2018	PERMIT SET
-	02.21.2018	GAR
-	02.21.2018	PERMIT RESPONSE
-	04.27.2018	PERMIT RESPONSE
-	05.11.2018	GMP SET
-	07.03.2018	IFC SET

SEAL



©2018 SK+I Architectural Design Group, LLC
THIS PROJECT IS PROTECTED BY COPYRIGHT
LAW AND INTERNATIONAL TREATIES

DRAWING TITLE
COVER SHEET

DATE 07.03.2018
SCALE NTS

L000