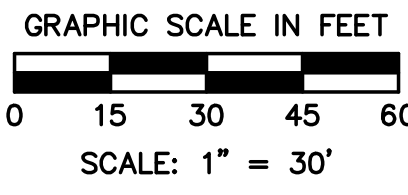
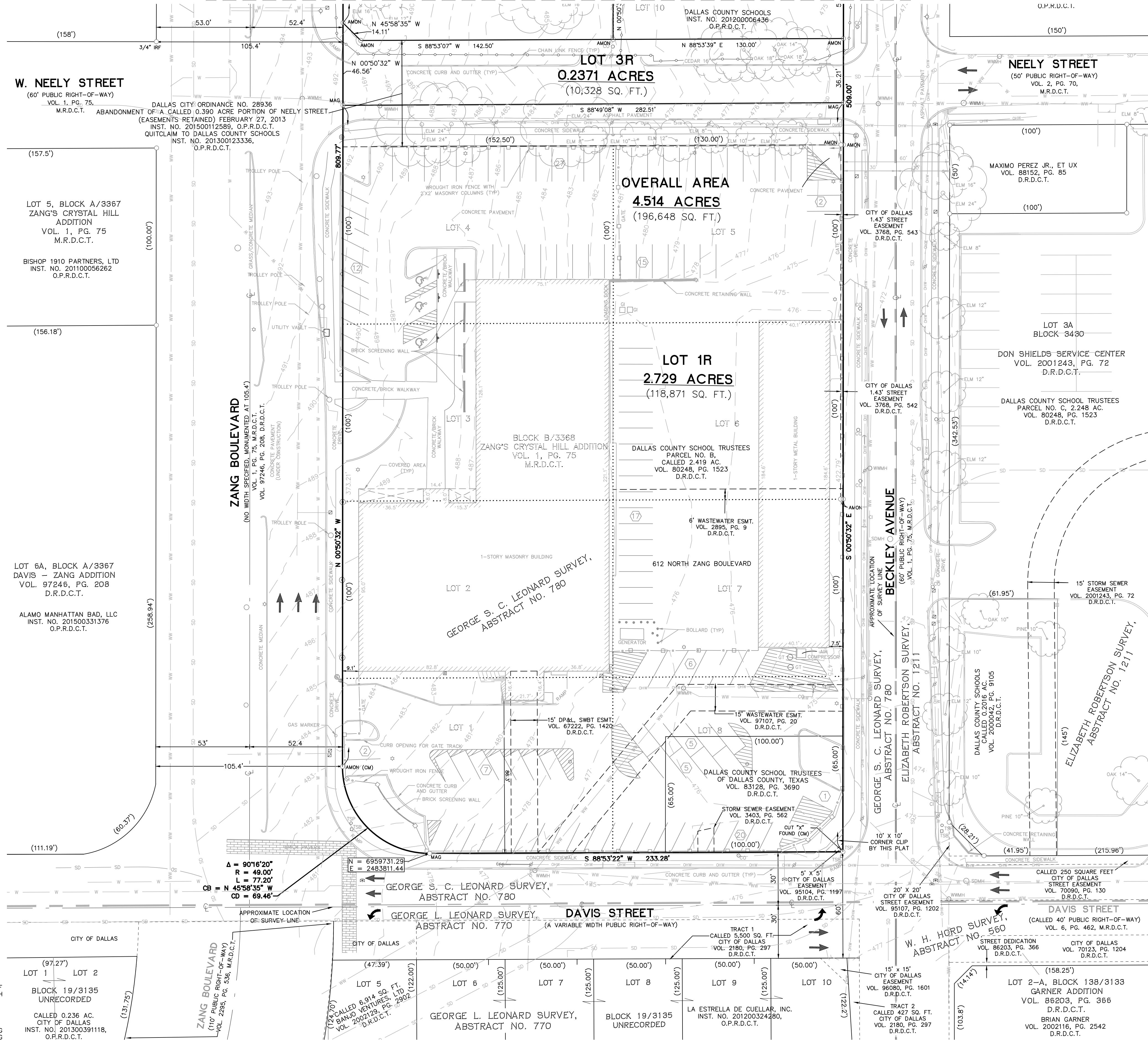


VICINITY MAP
MAPSCO 54D
(NOT TO SCALE)



SEE SHEET 2 OF 3



LEGEND

IRF	IRON ROD FOUND
IPF	IRON PIPE FOUND
CIRF	5/8-INCH IRON ROD WITH YELLOW PLASTIC CAP STAMPED "BURY" FOUND (UNLESS NOTED OTHERWISE)
AMON	5/8-INCH IRON ROD WITH 3 1/4" ALUMINUM DISK STAMPED "DALLAS COUNTY SCHOOLS ADDITION RPLS 5504" FOUND
AMON SET	5/8-INCH IRON ROD WITH 3 1/4" ALUMINUM DISK STAMPED "DCSA-STANTEC" SET
MAG	MAGNETIC NAIL WITH WASHER STAMPED "RPLS 5504" FOUND
PFC	POINT FOR CORNER
D.R.D.C.T.	DEED RECORDS OF DALLAS COUNTY, TEXAS
M.R.D.C.T.	MAP RECORDS OF DALLAS COUNTY, TEXAS
O.P.R.D.C.T.	OFFICIAL PUBLIC RECORDS OF DALLAS COUNTY, TEXAS
(XX.XX)	RECORD INFORMATION
(CM)	CONTROLLING MONUMENT
DP&L	DALLAS POWER AND LIGHT
SWBT	SOUTHWESTERN BELL TELEPHONE
VOL., PG.	VOLUME, PAGE
SQ. FT.	SQUARE FEET
TYP.	TYPICAL
GI	GRATE INLET
CI	CURB INLET
WMWH	WASTEWATER MANHOLE
SDMH	STORM DRAIN MANHOLE
MW	MONITORING WELL
GT	GREASE TRAP MANHOLE
CO	WASTEWATER CLEANOUT
TSP	TRAFFIC SIGNAL POLE
TSB	TRAFFIC SIGNAL BOX
A/C	AIR CONDITIONER
SIGN	SIGN
↑	TRAFFIC FLOW
⊙	LIGHT POLE
⊙	UTILITY POLE
⊙	WATER METER
⊙	WASTEWATER CLEANOUT
⊙	WATER VALVE
⊙	FIRE HYDRANT
⊙	GUY WIRE
⊙	GAS VALVE
⊙	FLAG POLE
⊙	BOLLARD
⊙	MAIL BOX
⊙	PARKING SPACE COUNT
-OHW-	OVERHEAD WIRES
⊙	GAS METER
⊙	FIRE HYDRANT
⊙	DEFOTES COMMON OWNERSHIP
⊙	HANDICAP PARKING
⊙	OAK 10"

PRELIMINARY PLAT
DALLAS COUNTY SCHOOLS ADDITION
LOTS 1R, 2R, 3R AND 4R, BLOCK B/3368

REPLAT OF LOTS 1-8, BLOCK B/3368,
ALL OF LOTS 3 & 4, BLOCK C/3369, A PORTION OF LOT 10,
BLOCK C/3369 OF ZANG'S CRYSTAL HILL ADDITION,
RECORDED IN VOLUME 1, PAGE 75, M.R.D.C.T. &
ALL OF LOT 1A, BLOCK B/3369
OF DCS ADMINISTRATIVE PARKING ON ZANG,
RECORDED IN INSTRUMENT NO. 201100266127, O.P.R.D.C.T.
NEELY STREET RIGHT-OF-WAY ABANDONMENT
PER CITY OF DALLAS ORDINANCE NO. 28936
IN THE GEORGE S.C. LEONARD SURVEY, ABSTRACT NO. 780,
CITY OF DALLAS, DALLAS COUNTY, TEXAS

TOTAL ACRES - 4.514 ACRES
CITY PLAN FILE NO. S156-255
JULY 22, 2016

OWNER:
DALLAS COUNTY SCHOOLS, ET. AL.
12222 MERIT DRIVE, SUITE 400
DALLAS, TEXAS 75208
PH: (214) 944-4568
CONTACT: RICK SORRELLS

SURVEYOR:
STANTEC CONSULTING SERVICES INC.
12222 MERIT DRIVE, SUITE 400
DALLAS, TEXAS 75251
PH: (972) 991-0011
CONTACT: DAVID DE WEIRD, R.P.L.S.
TBPLS REGISTRATION NO. 10194229

- NOTES:**
- COORDINATES AND BEARINGS SHOWN HEREON ARE REFERENCED TO THE STATE PLANE COORDINATE SYSTEM, NORTH TEXAS CENTRAL ZONE 4202, NORTH AMERICAN DATUM OF 1983, (2011).
 - LOT-TO-LOT DRAINAGE IS NOT PERMITTED WITHOUT ENGINEERING SECTION APPROVAL.
 - THE PURPOSE OF THIS PLAT IS TO CREATE A LEGAL BUILDING LOT FOR DEVELOPMENT PURPOSES AND TO COMBINE MULTIPLE LOTS INTO 4 LOTS.
 - REFERENCE BENCHMARK:
CITY OF DALLAS BENCHMARK NUMBER 54-D-2: SQUARE CUT FOUND ON TOP OF CURB AT THE CENTER OF CURB INLET ALONG THE SOUTH SIDE OF EAST SIXTH STREET IN FRONT OF HOUSE NUMBER 216-218. REFERENCE ELEVATION = 451.08'
 - SITE BENCHMARKS:
CUT "X" SET AT THE SOUTHWEST CORNER OF CANTY STREET AND ZANG BOULEVARD, APPROXIMATELY 50-FEET EAST FROM THE CENTERLINE OF ZANG BOULEVARD, APPROXIMATELY 15-FEET SOUTH FROM THE CENTERLINE OF CANTY STREET. ELEVATION = 500.33'
SQUARE CUT SET ON TOP OF CURB OF STORM SEWER INLET ALONG THE EAST SIDE OF ZANG BOULEVARD, APPROXIMATELY 45-FEET EAST FROM THE CENTERLINE OF ZANG BOULEVARD, APPROXIMATELY 45-FEET SOUTH FROM THE CENTERLINE OF DAVIS STREET. ELEVATION = 480.19'
 - ONSITE IMPROVEMENTS ARE TO BE DEMOLISHED WITH RE-DEVELOPEMENT.
 - NO STRUCTURES OBSERVED ON THE REMAINDER OF LOT 10.