

- KEYNOTES TO PLAN: (AHU-1)**
- ① PROVIDE LOUVERED WALL CAP; PAINT TO MATCH EXTERIOR.
 - ② 4" DRYER DUCT. PROVIDE PROPER SHEET METAL DUCT AND FIRE STOP AT CEILING PENETRATION. LABEL OR TAG EQUIVALENT LENGTH AS REQUIRED PER IMC 504.6.5.1. FIRE WRAP IS NOT NEEDED PER LOCAL AHJ.
 - ③ EF-1 IN CEILING WITH INTEGRAL RADIANT DAMPER.
 - ④ ENSURE PROPER ACCESS IN CLOSET TO THE RADIATION DAMPER IN THE SUPPLY DUCTWORK.
 - ⑤ PROVIDE A 30"x10" TYPE B GRILLE ABOVE MECHANICAL ROOM DOOR.
 - ⑥ REFRIGERANT LINES, ROUTE FROM ROOF TO EACH FLOOR AND TIE INTO ASSOCIATED AHU.
 - ⑦ ROUTE CONDENSATE FROM AHU TO FLOOR DRAIN IN MECHANICAL CLOSET.
 - ⑧ PROVIDE A PLENUM BOX FROM AHU UP TO TRUSS SPACE. CONTRACTOR TO COORDINATE TRUSS LOCATIONS ABOVE AHU CLOSET TO ALLOW FOR DUCT PENETRATION. PROVIDE A RADIATION DAMPER AT CEILING PENETRATION.
 - ⑨ PROVIDE A 24"x10" TYPE B GRILLE OVER THE DOOR TO WASHER/DRYER CLOSET. GRILLE SHALL PROVIDE 100 SQ. IN. IN FREE AREA.
 - ⑩ ALL DOORS WILL BE UNDERCUT BY 3/4 OF AN INCH.

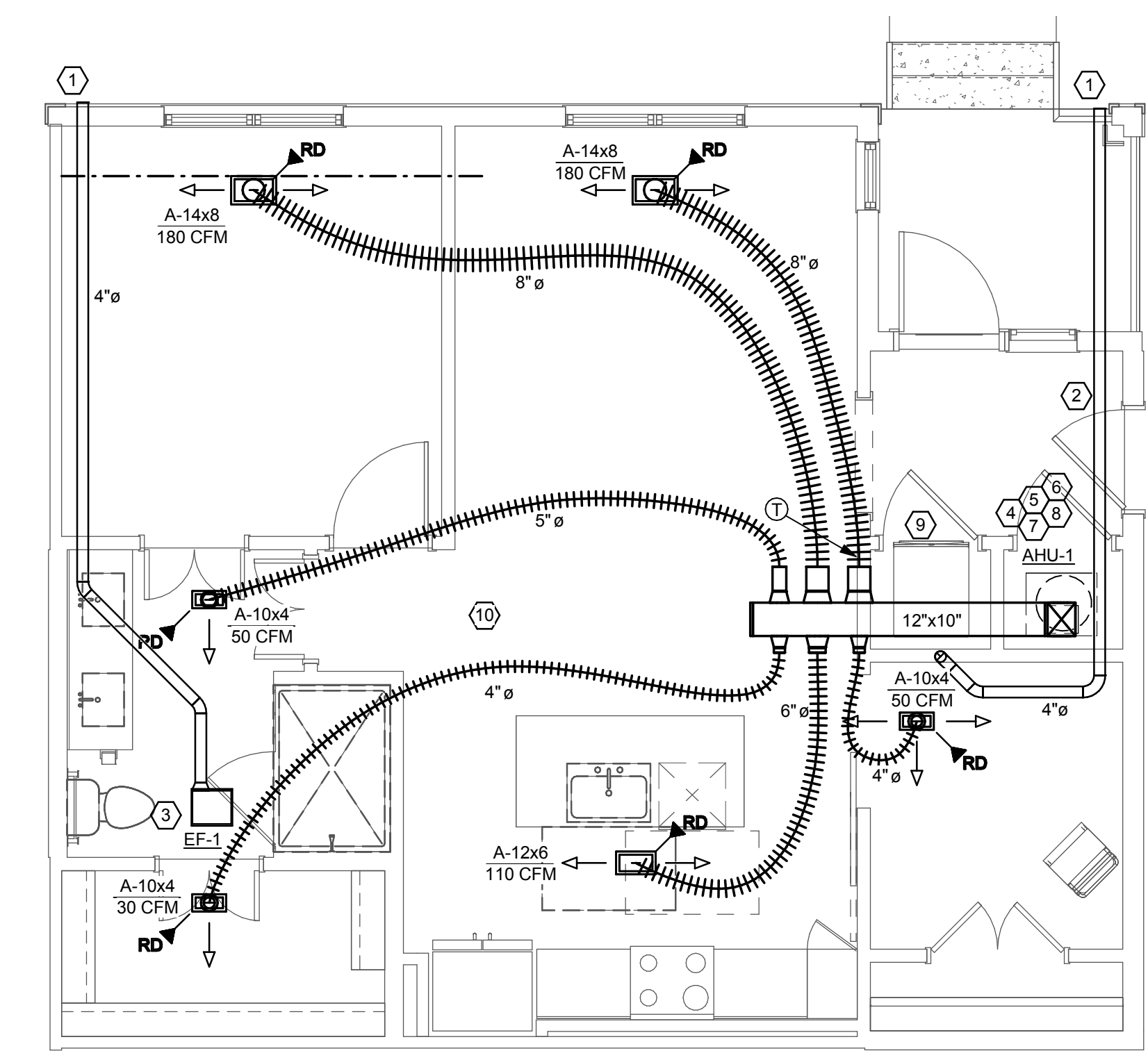
DRYER NOTES:

NON-STACKED AND STACKED DRYER:
DRYER IS A GE MODEL GFDN160EJWW AND IS CAPABLE OF UP TO 45 FEET OF DRYER DUCT WITH TWO 90 DEGREE ELBOWS.

GENERAL:
DRYER WILL HAVE A BACK CONNECTION BUT ENSURE TO COORDINATE DRYER CONNECTION IN FIELD.

WHIRLPOOL MODEL WED75HEFW

RECOMMENDED MAXIMUM LENGTH Exhaust Hood Types		
	Recommended	Use only for short run installations
No. of 90° Elbows	Rigid Metal	Rigid Metal
0	90 Feet	60 Feet
1	60 Feet	45 Feet
2	45 Feet	35 Feet
3	35 Feet	25 Feet
4	25 Feet	15 Feet



Dryer Duct = 30.0 ft length + 10 ft for 2-90 degree elbows + 2.5 ft for 1-45 degree elbow = 42.5 equivalent ft STANDARD VENT DRYER

1 UNIT A3 - MECHANICAL
SCALE: 1/4" = 1'-0"

NOT FOR
CONSTRUCTION

Design
Development

PROJECT: 217035
DATE: 6-28-2017
REVISIONS: DATE

DRAWN BY: Author
CHECKED BY: Checker

UNIT A3