

- KEYNOTES TO PLAN:** (AHU-2)
- ① PROVIDE LOUVERED WALL CAP; PAINT TO MATCH EXTERIOR.
 - ② 4" DRYER DUCT. PROVIDE PROPER SHEET METAL DUCT AND FIRE STOP AT CEILING PENETRATION. LABEL OR TAG EQUIVALENT LENGTH AS REQUIRED PER IMC 504.6.5.1. FIRE WRAP IS NOT NEEDED PER LOCAL AHJ.
 - ③ EF-1 IN CEILING WITH INTEGRAL RADIANT DAMPER.
 - ④ ENSURE PROPER ACCESS IN CLOSET TO THE RADIATION DAMPER IN THE SUPPLY DUCTWORK.
 - ⑤ PROVIDE A 30"x12" TYPE B GRILLE ABOVE MECHANICAL ROOM DOOR.
 - ⑥ REFRIGERANT LINES. ROUTE FROM ROOF TO EACH FLOOR AND TIE INTO ASSOCIATED AHJ.
 - ⑦ ROUTE CONDENSATE FROM AHU TO FLOOR DRAIN IN MECHANICAL CLOSET.
 - ⑧ PROVIDE A PLENUM BOX FROM AHU UP TO TRUSS SPACE. CONTRACTOR TO COORDINATE TRUSS LOCATIONS ABOVE AHU CLOSET TO ALLOW FOR DUCT PENETRATION. PROVIDE A RADIATION DAMPER AT CEILING PENETRATION.
 - ⑨ PROVIDE A 24"x10" TYPE B GRILLE OVER THE DOOR TO WASHER DRYER CLOSET. GRILLE SHALL PROVIDE 100 SQ. IN. IN FREE AREA.
 - ⑩ ALL DOORS WILL BE UNDERCUT BY 3/4 OF AN INCH.

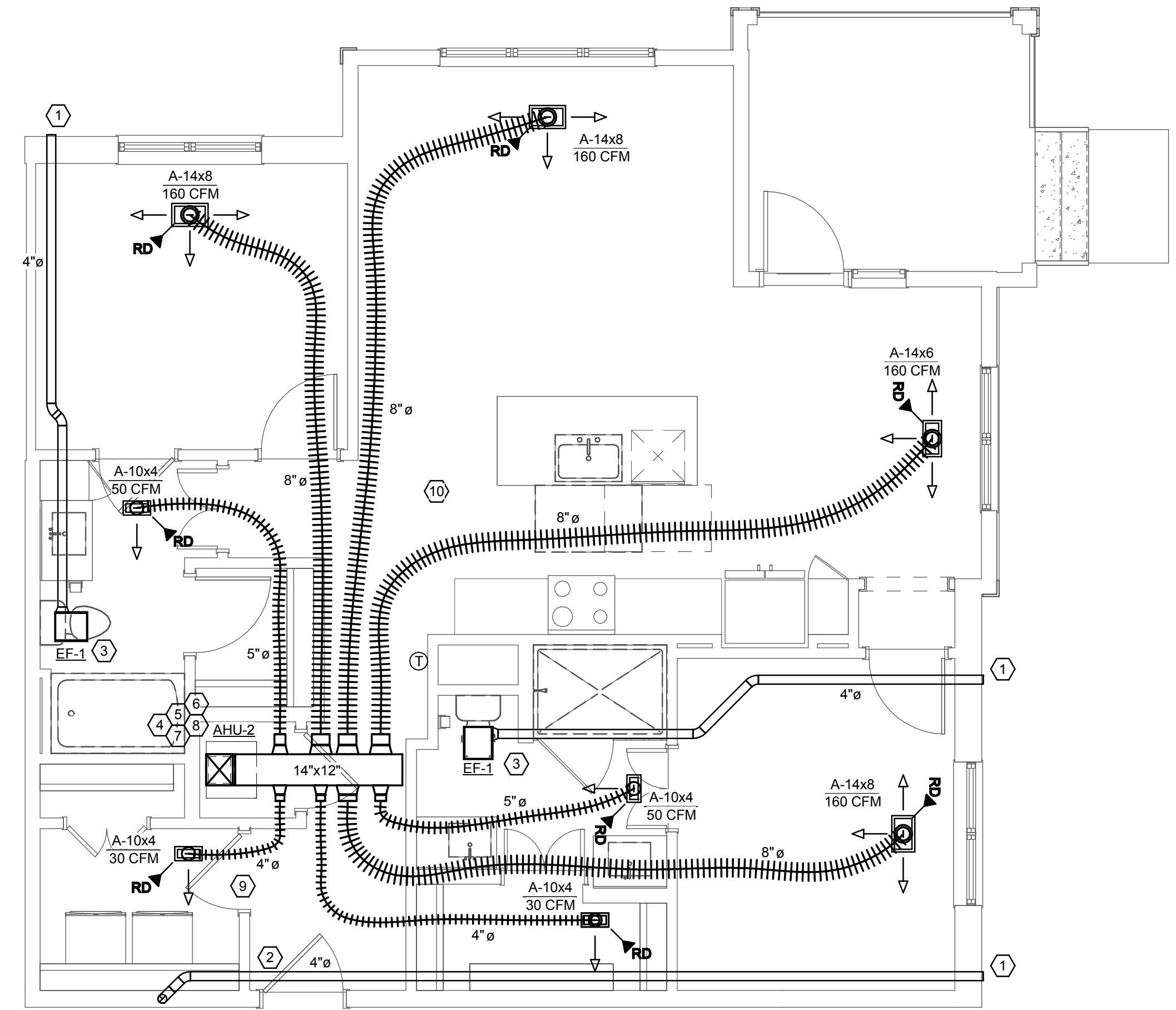
DRYER NOTES:
NON-STACKED AND STACKED DRYER.
DRYER IS A GE MODEL GFDN160EJWW AND IS CAPABLE OF UP TO 45 FEET OF DRYER DUCT WITH TWO 90 DEGREE ELBOWS.

GENERAL
DRYER WILL HAVE A BACK CONNECTION BUT ENSURE TO COORDINATE DRYER CONNECTION IN FIELD.

GE MODEL GFDN160EJWW

EXHAUST LENGTH

No. of 90° Elbows	RECOMMENDED MAXIMUM LENGTH Exhaust Hood Types	
	Recommended	Use only for short run installations
0	90 Feet	60 Feet
1	60 Feet	45 Feet
2	45 Feet	35 Feet
3	35 Feet	25 Feet
4	25 Feet	15 Feet



Dryer Duct = 40.5 ft length + 5 ft for 1-90 degree elbow + 2.5 ft for 1-45 degree elbow = 48.0 equivalent ft STANDARD VENT DRYER

UNIT B2 - MECHANICAL
SCALE: 1/4" = 1'-0"

Crescent Communities
Crescent Davidson
Davidson, North Carolina

NOT FOR CONSTRUCTION
Design Development

PROJECT:	217035
DATE:	6-28-2017
REVISIONS:	DATE

DRAWN BY: Author
CHECKED BY: Checker

UNIT B2