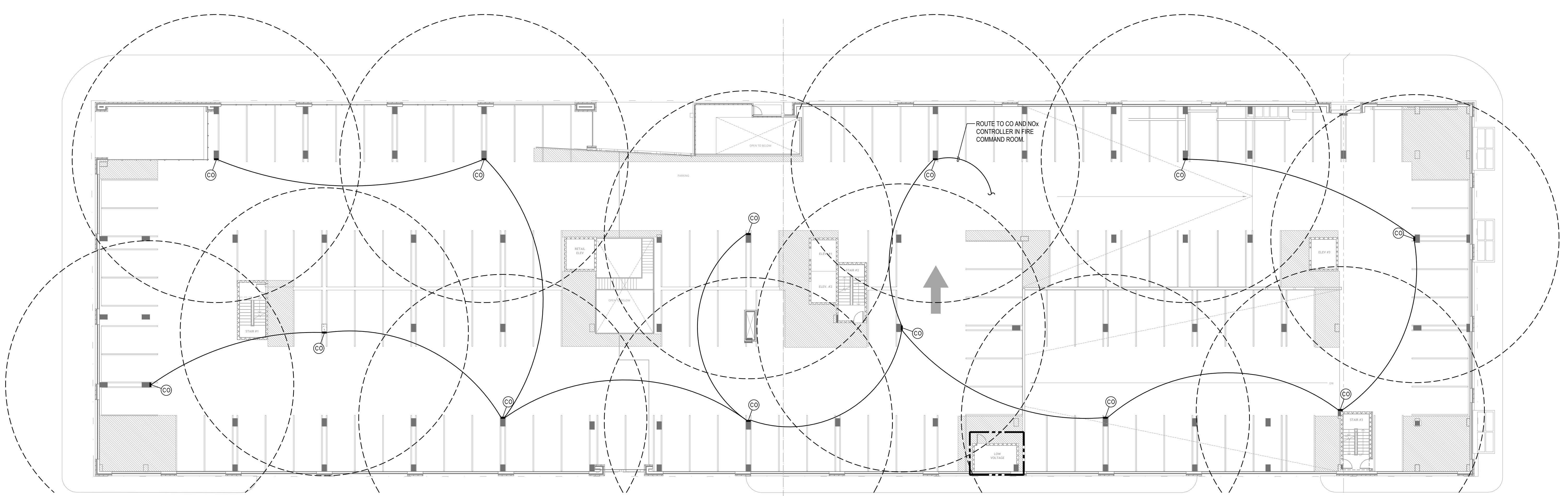


GARAGE CALCULATIONS AND EQUIPMENT SEQUENCE: 2015 IMC
MAXIMUM AIRFLOW (2015 IMC)
 15,275 FT² ENCLOSED GARAGE AREA
 15,275 FT² * 0.75 CFM/FT² = 11,457 CFM REQUIRED
 12,000 CFM TOTAL PROVIDED BY GEF-2A AND GEF-2B.
CONTINUOUS AIRFLOW (2015 IMC)
 15,275 FT² ENCLOSED GARAGE AREA
 15,275 FT² * 0.05 CFM/FT² = 764 CFM REQUIRED
 1,000 CFM PROVIDED BY GEF-2B.

2 GROUND LEVEL FLOORPLAN - HVAC
 SCALE: 1/16" = 1'-0"



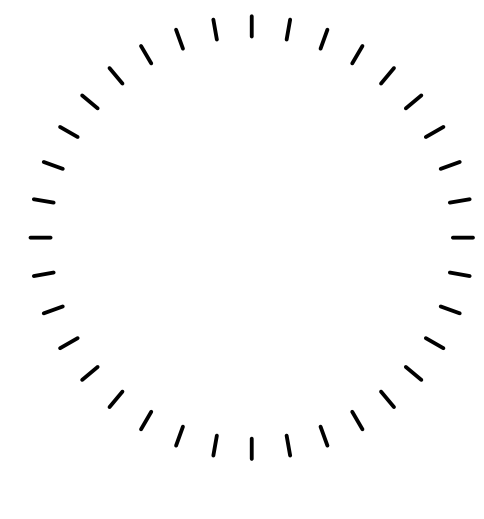
GARAGE CALCULATIONS AND EQUIPMENT SEQUENCE: 2015 IMC
MAXIMUM AIRFLOW (2015 IMC)
 50,980 FT² ENCLOSED GARAGE AREA
 50,980 FT² * 0.75 CFM/FT² = 38,235 CFM REQUIRED
 38,600 CFM TOTAL PROVIDED BY GEF-1A AND GEF-1B.
CONTINUOUS AIRFLOW (2015 IMC)
 50,980 FT² ENCLOSED GARAGE AREA
 50,980 FT² * 0.05 CFM/FT² = 2,549 CFM REQUIRED
 2,600 CFM PROVIDED BY GEF-1B.

1 UPPER LEVEL PARKING - HVAC
 SCALE: 1/16" = 1'-0"



hord | coplan | macht

ARCHITECTURE
 LANDSCAPE ARCHITECTURE
 PLANNING
 INTERIOR DESIGN



PROFESSIONAL CERTIFICATION: I CERTIFY THAT THESE DOCUMENTS WERE PREPARED OR APPROVED BY ME, AND THAT I AM A DULY LICENSED ARCHITECT UNDER THE LAWS OF THE STATE OF MARYLAND. LICENSE NUMBER: DATE: EXPIRES:

no.	date	revision

Project Name	DEEP ELLUM
Project Number	216111
Date	04.28.2017
Scale	As indicated
Drawing	UPPER LEVEL PARKING & GROUND FLOOR - HVAC