

08/22/2019



Phillips Gradick Engineering, P.C.
500 Sugar Mill Rd
Building A, Suite 105
Atlanta, GA 30350
Telephone: 770.650.9061
Fax: 770.642.2410
www.pgeng.net
PGE Project # 218022

No.	Description	Date
1	PERMIT COMMENTS	09/18/19
2	ASH#01	01/31/2020
3	ASH#02	07/10/2020

This drawing, as an instrument of service, is and shall remain the property of the Architects and shall not be reproduced, published or used in any way without the permission of the Architects.

14TH & SPRING/NOVEL MIDTOWN
PARKING DECK (PHASE I)

NORTH PARKING DECK - LDP # LD-20190004K
1150 SPRING STREET NW, ATLANTA, GA 30309
SOUTH PARKING DECK - LDP # LD-20190004S
1150 SPRING STREET NW, ATLANTA, GA 30309

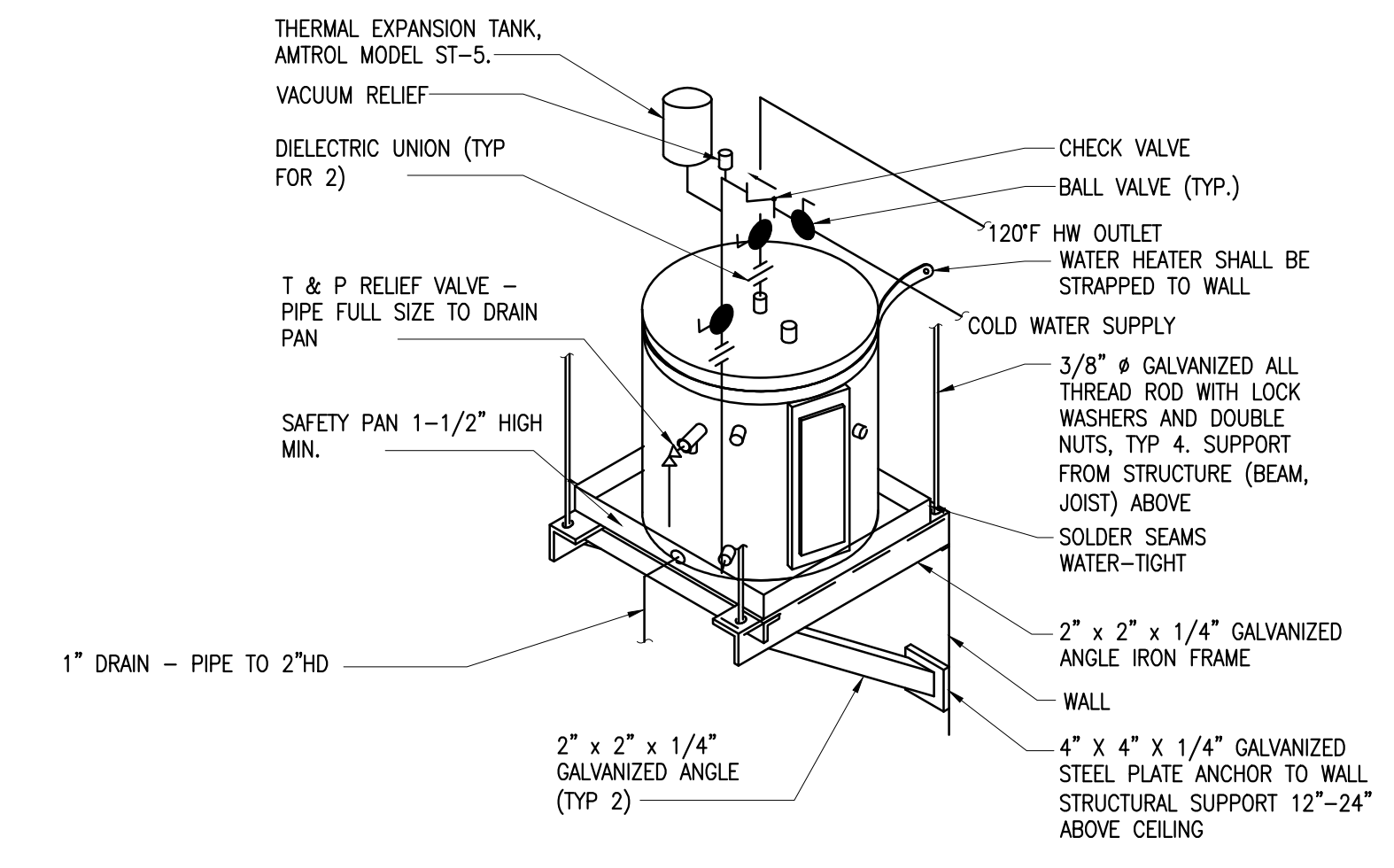
1150 GREEN GS, LLC

SHEET TITLE:
PLUMBING DETAILS

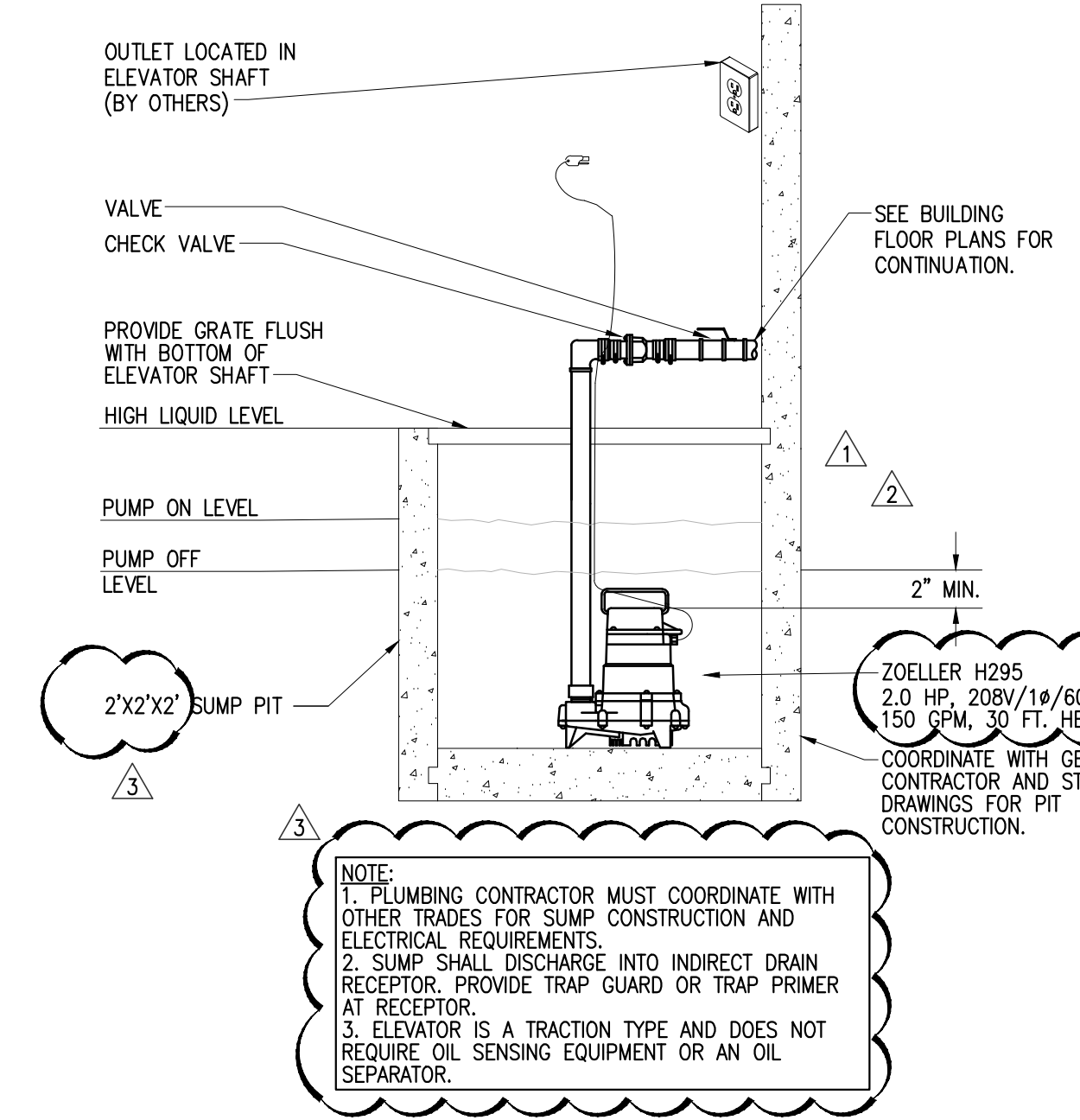
SHEET NUMBER:
P0.02

08-26-19

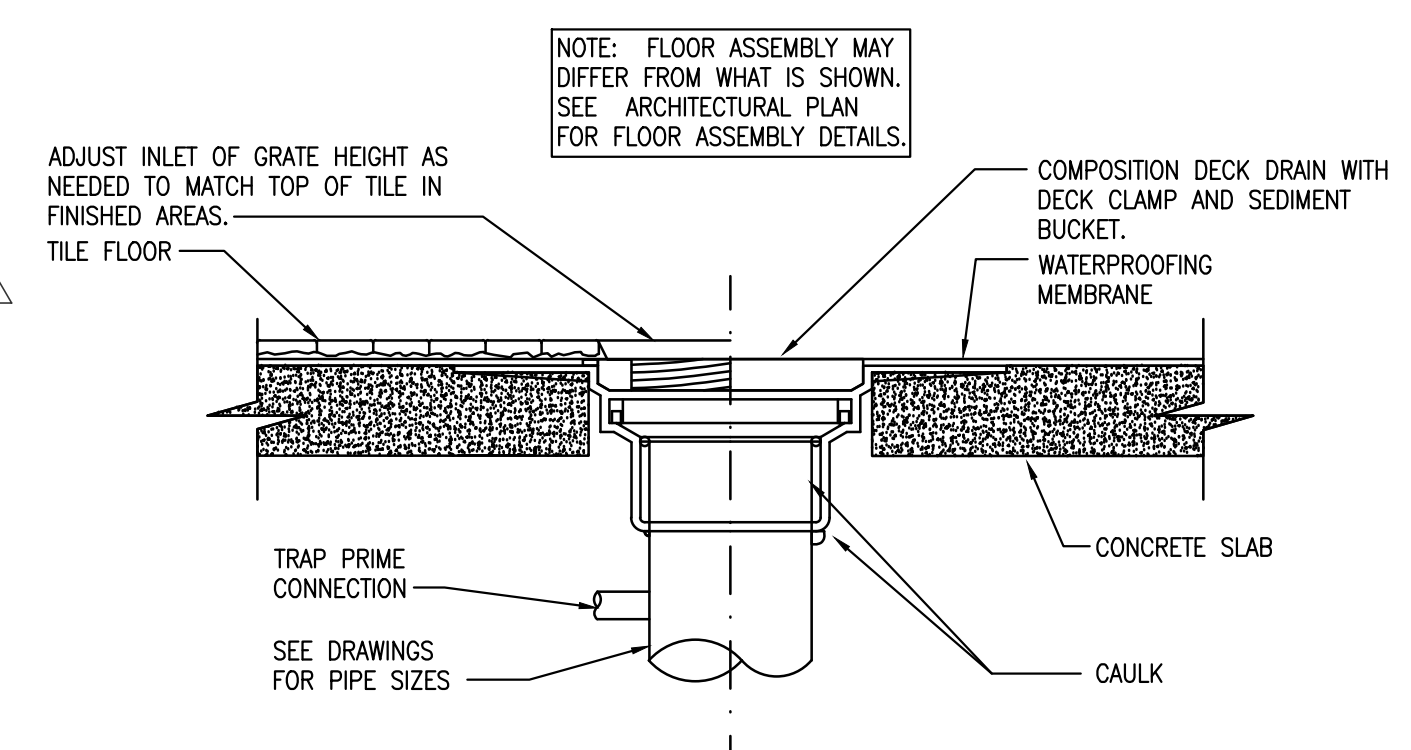
ISSUED FOR CONSTRUCTION



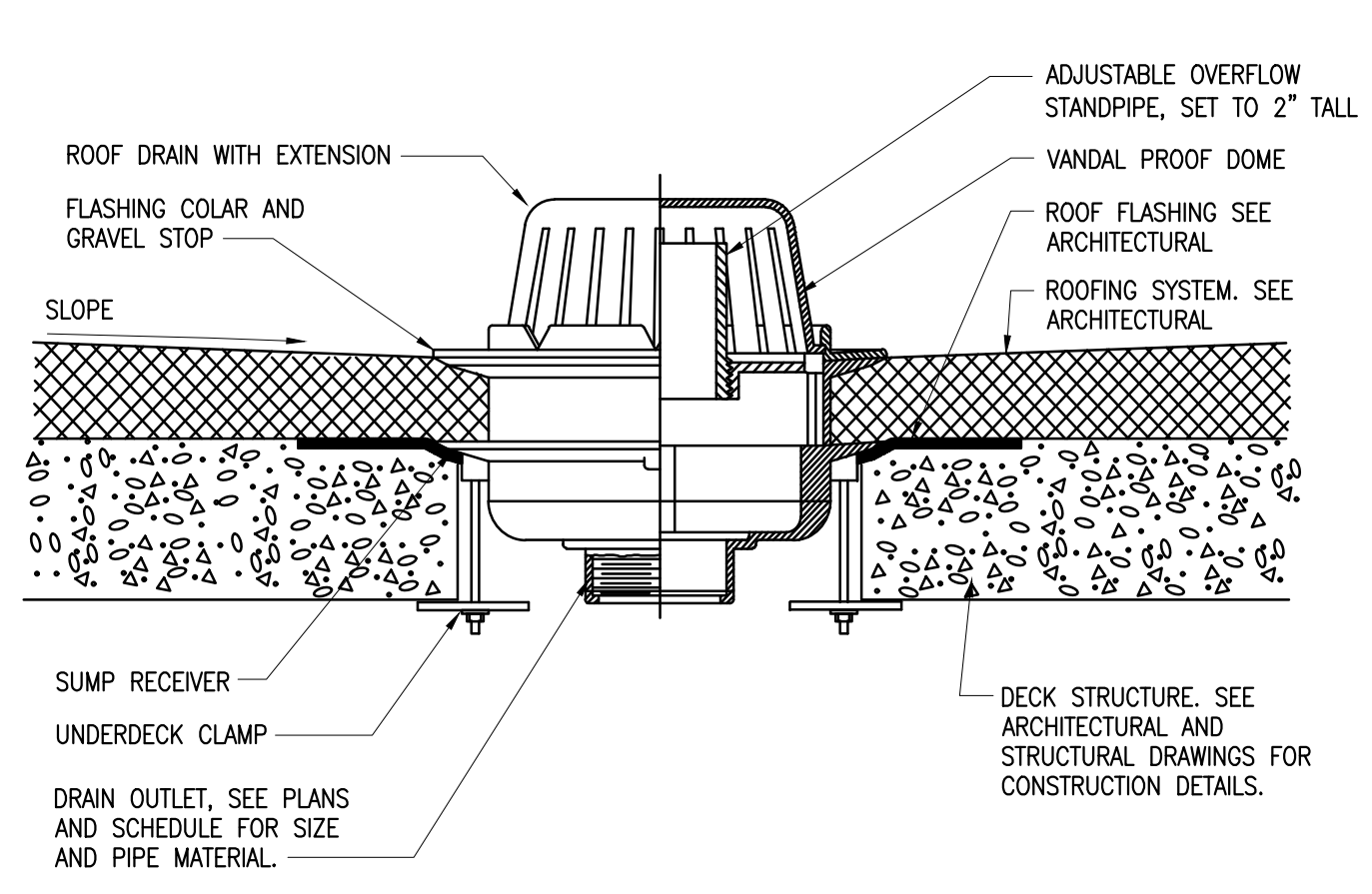
11 ELECTRIC WALL HUNG WATER HEATER DETAIL
NO SCALE



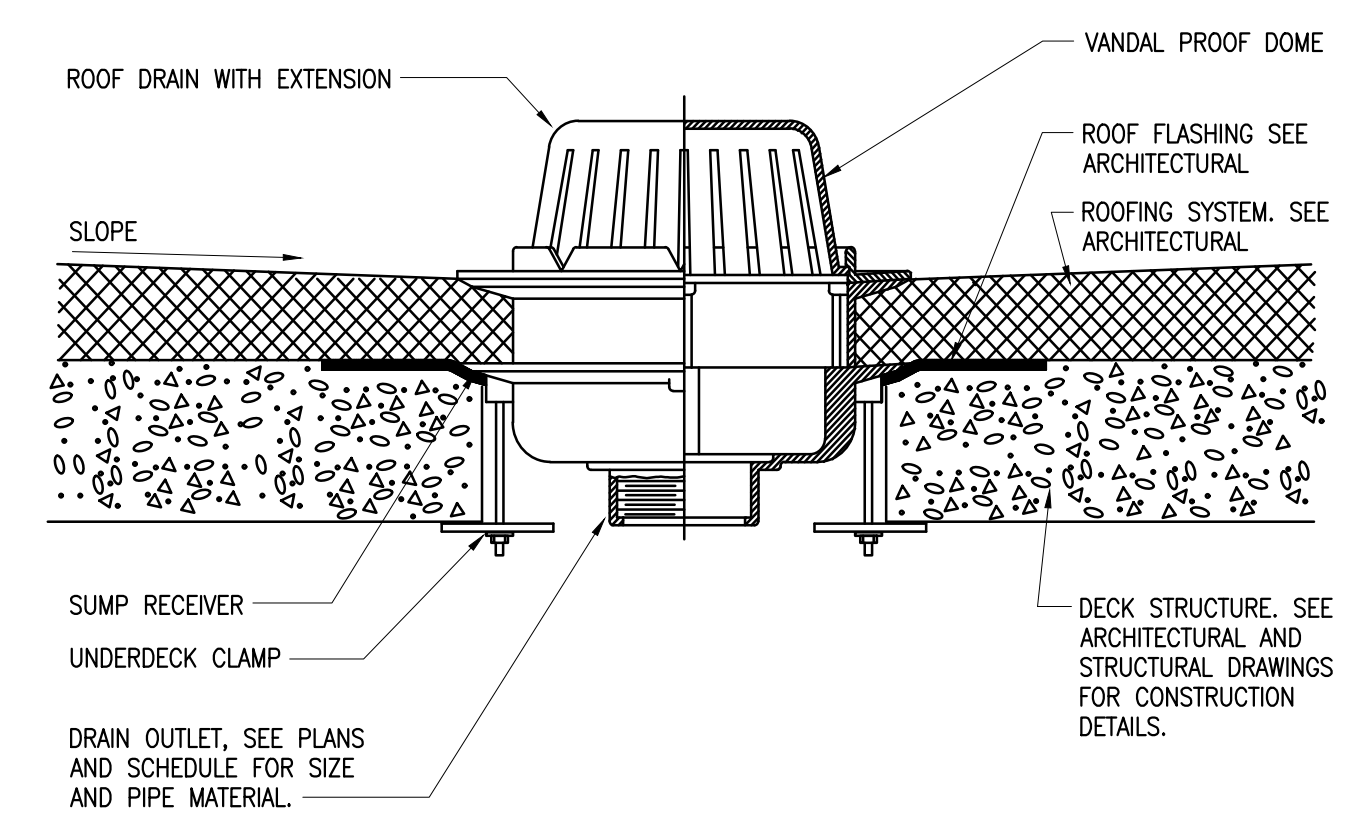
8 ELEVATOR SUMP PUMP DETAIL
NO SCALE



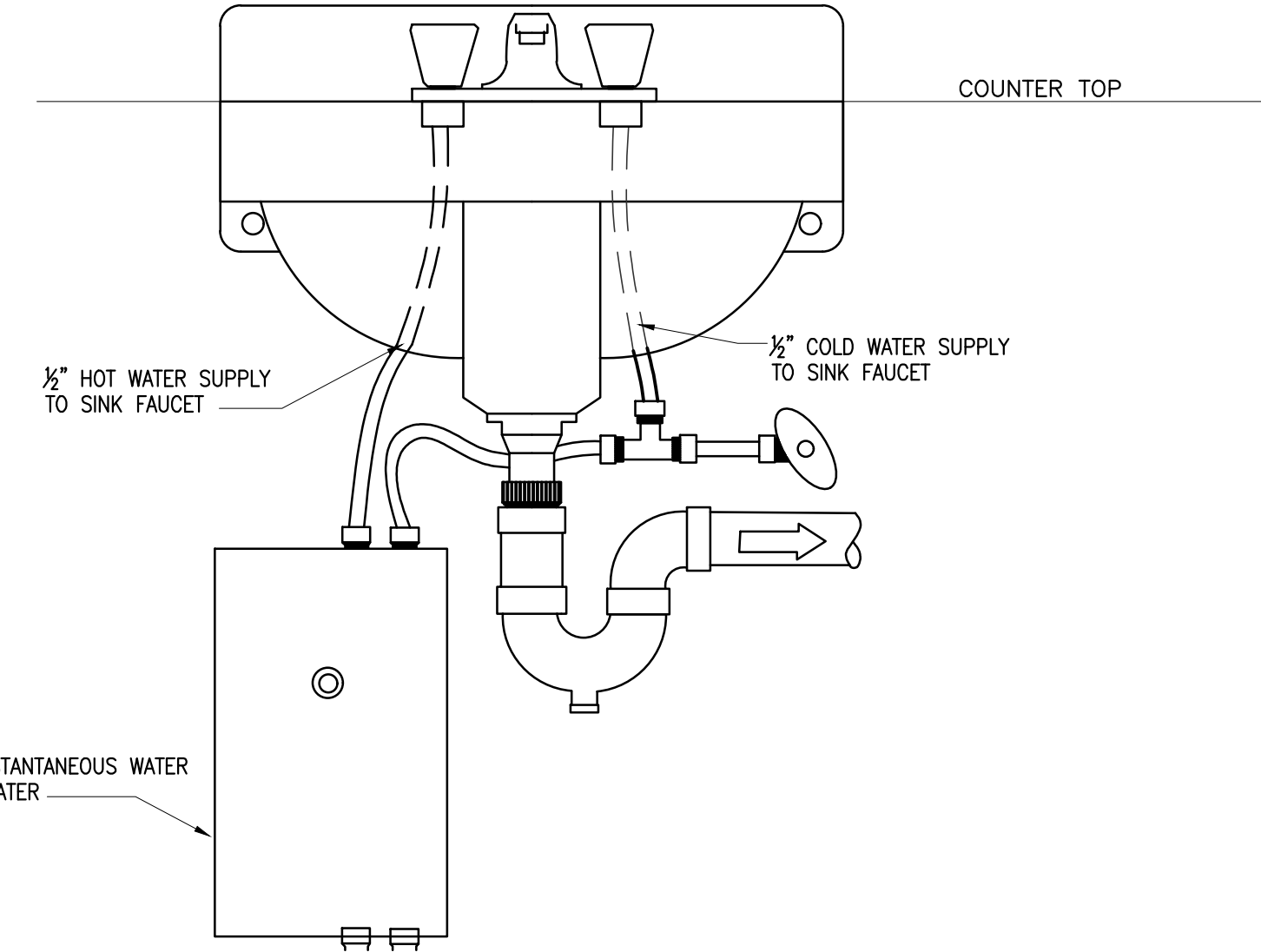
7 FLOOR DRAIN DETAIL
NO SCALE



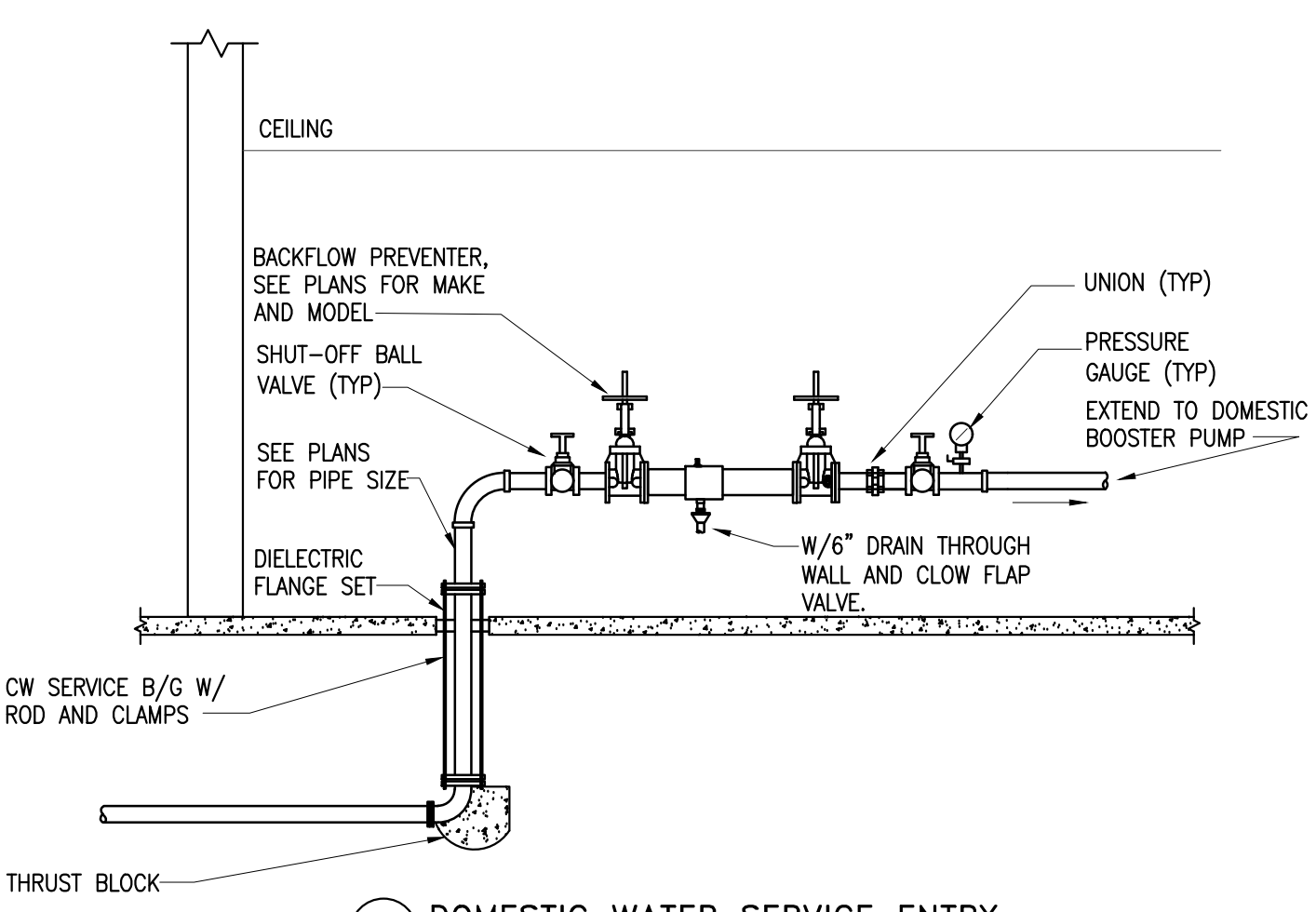
4 OVERFLOW ROOF DRAIN DETAIL
SCALE: NO SCALE



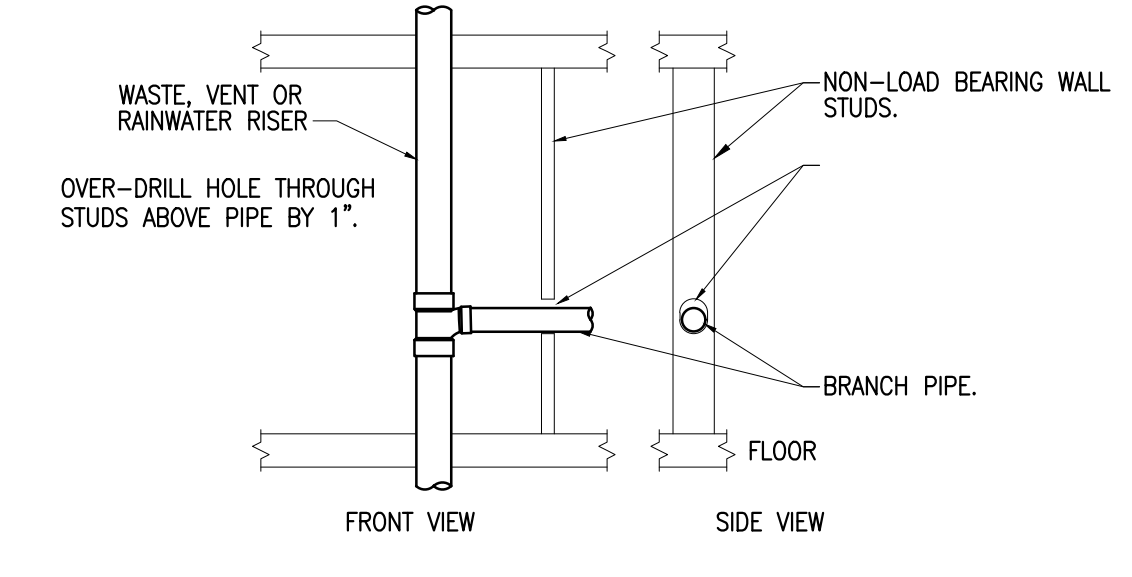
3 ROOF DRAIN DETAIL
SCALE: NO SCALE



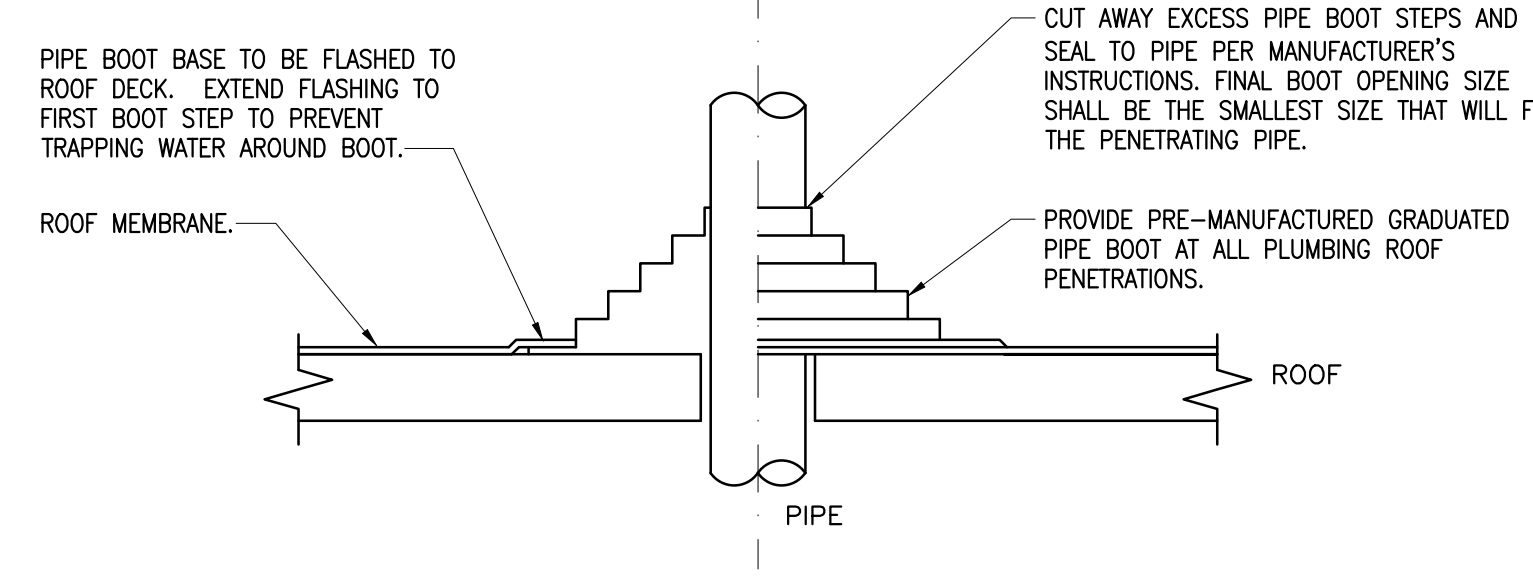
10 INSTANTANEOUS WATER HEATER
NO SCALE



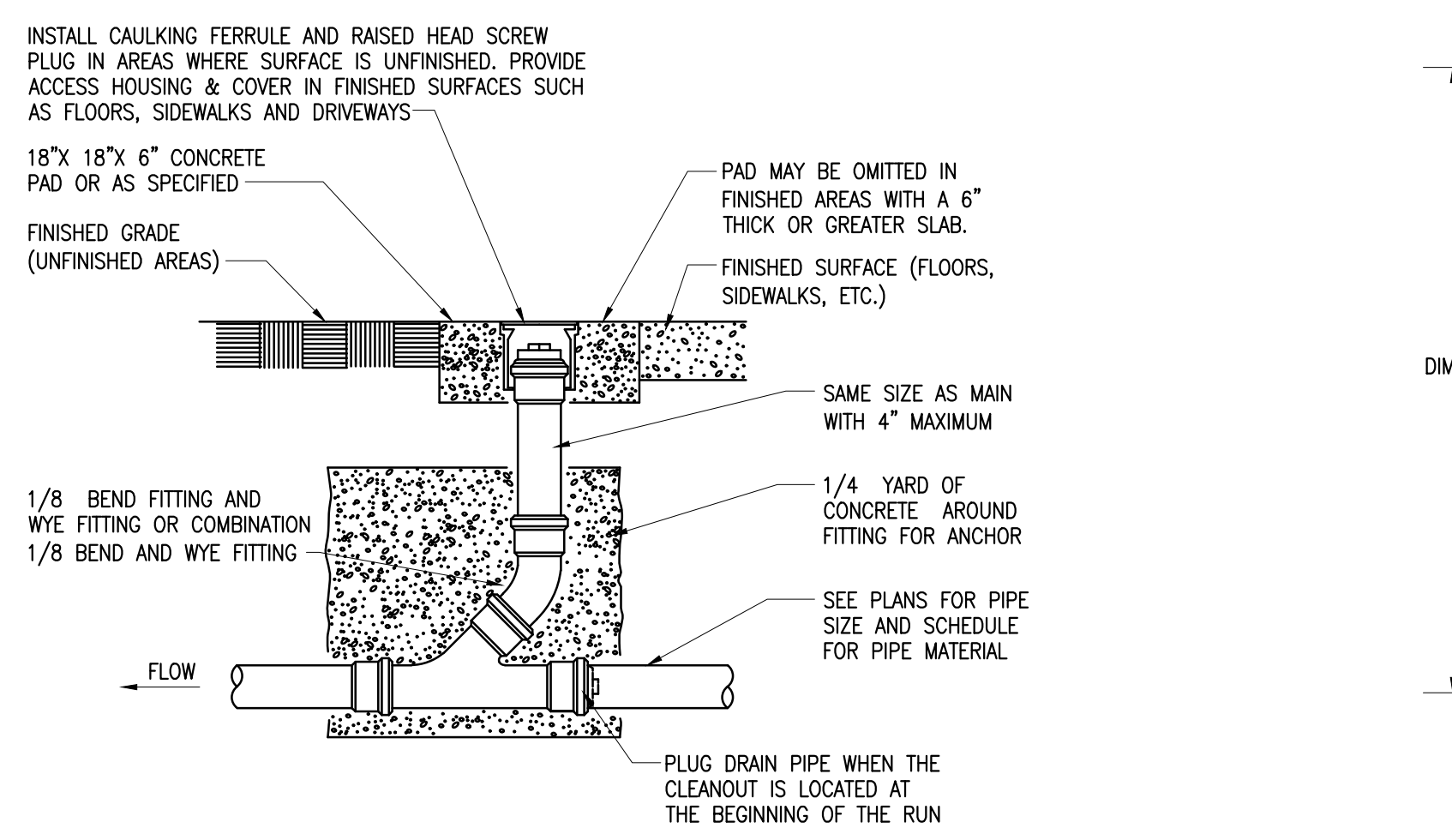
9 DOMESTIC WATER SERVICE ENTRY
NO SCALE



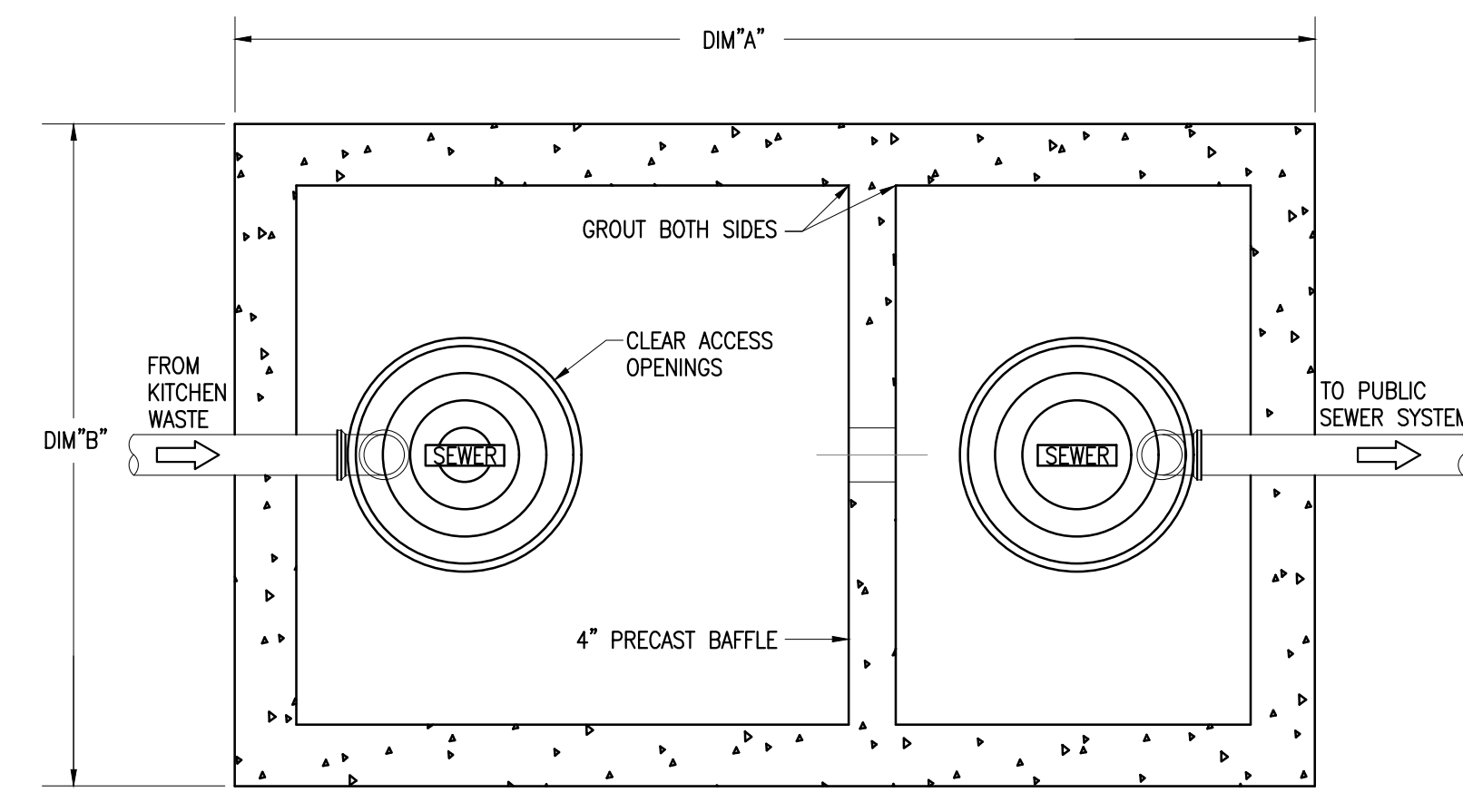
6 PIPE WALL STUD PENETRATION DETAIL
NO SCALE



5 PIPING ROOF PENETRATION DETAIL
NO SCALE

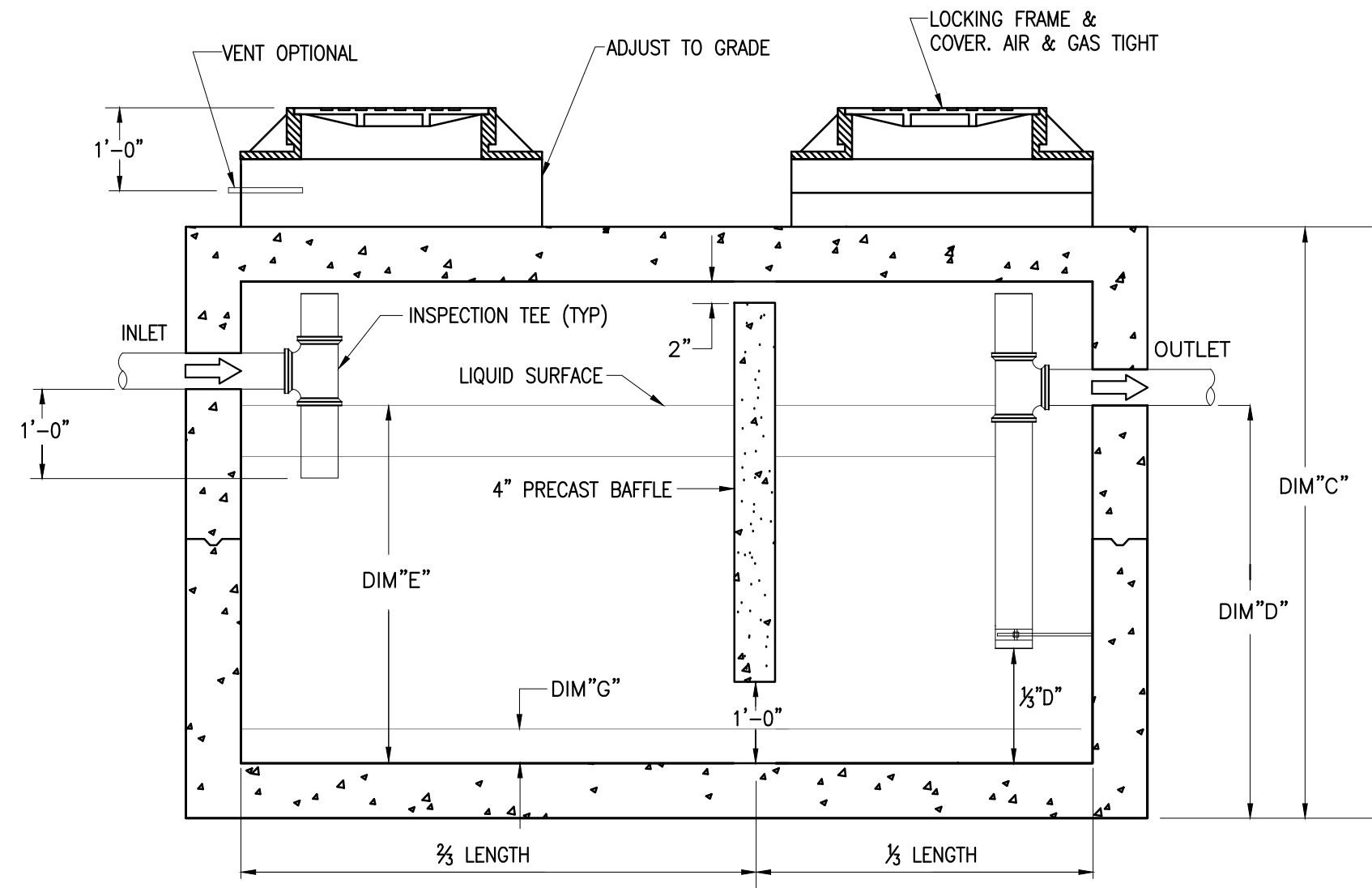


2 FLOOR/GRADE CLEANOUT DETAIL
NO SCALE



CAPACITY USGal	GREASE TRAP INTERCEPTOR SCHEDULE				
	DIM "A"	DIM "B"	DIM "C"	DIM "D"	DIM "E"
1,500	11'-2"	5'-8"	7'-2"	4'-4"	4'-0"

1 GREASE TRAP DETAIL
SCALE: NO SCALE



NOTE: THE 25% RULE REQUIRES THAT THE DEPTH OF OIL OR GREASE FLOATING AND SETTLED, (DIMENSIONS "F" & "G") SHALL NOT BE EQUAL TO OR GREATER THAN 25% OF THE TOTAL OPERATING DEPTH OF THE TRAP.



TRUE NORTH