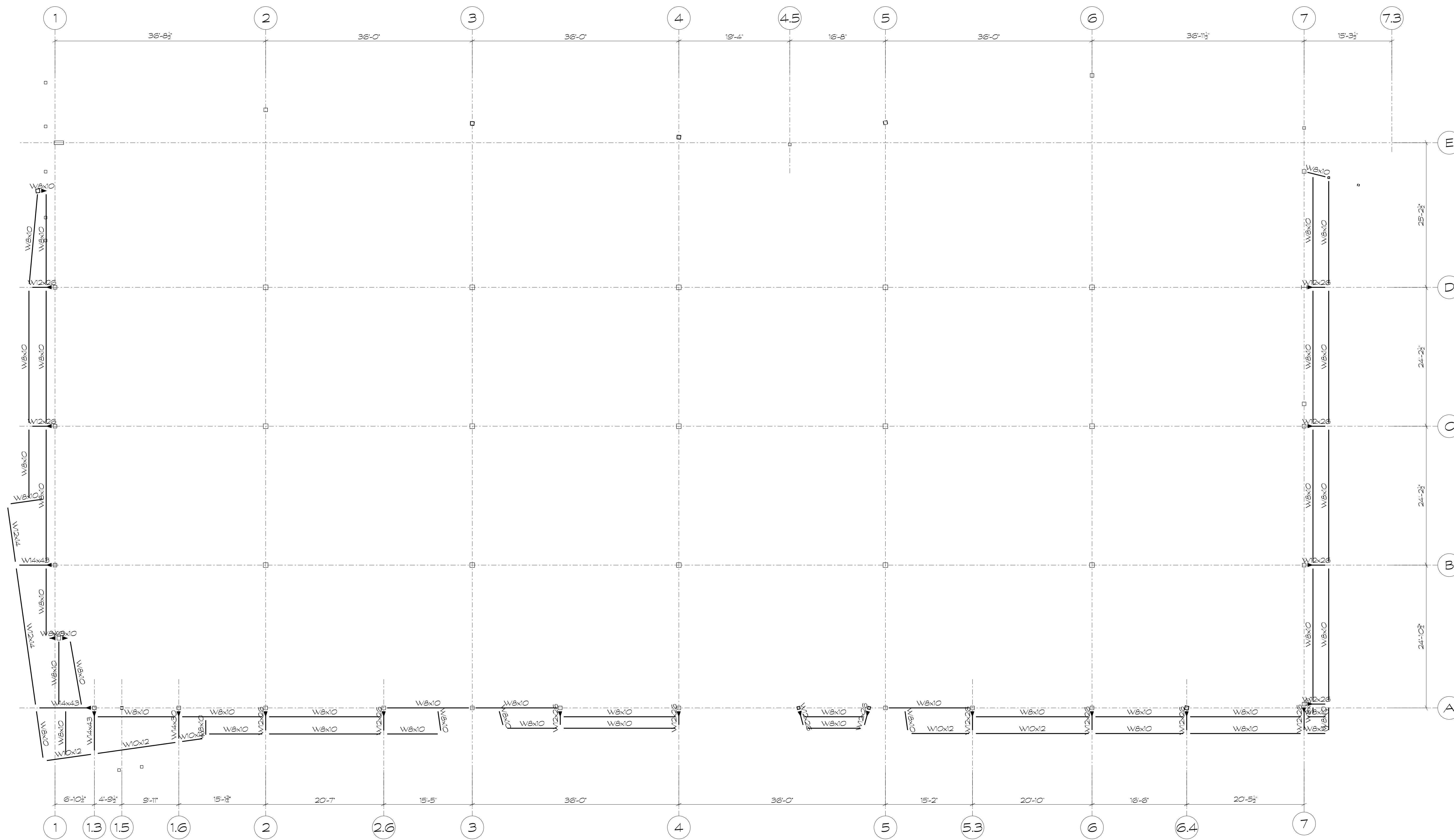


THIS DRAWING AND THE DESIGN SHOWN IS THE PROPERTY OF THE ARCHITECT AND MAY NOT BE REPRODUCED, COPIED OR USED WITHOUT WRITTEN PERMISSION. COPYRIGHT © 2014, INTEC GROUP, INC.



- PLAN NOTES:**
1. TOP OF STEEL ELEVATION = (+0'-8")
 2. FOR GENERAL NOTES, SEE SHEETS S300 AND S301. FOR TYPICAL FLOOR FRAMING DETAILS, SEE SHEET S500.
 3. INDICATES RIGID FULL MOMENT CONNECTION. CONNECTION SHALL BE DESIGNED FOR FULL CAPACITY OF THE MEMBER. SEE DETAILS ON S500 (U.N.O.). (C) INDICATES COLUMN CONTINUITY PLATE REQUIRED.
 4. ALL EXPOSED STEEL SHALL BE GALVANIZED.

INTEC

INTEC Group, Inc.
214 W. TREMONT AVENUE
SUITE 301
CHARLOTTE, NC 28203
P: 704.372.7910
www.intecgroup.net



PROJECT

CRESCENT COMMUNITIES
36TH STREET, CHARLOTTE, NC
NoDa RETAIL BUILDING

STAMP

PRELIMINARY
NOT FOR CONSTRUCTION

192510 Carolina Ave.
Suite 211
Charlotte, NC 28201
P: 704.481.9114
F: 704.481.9120
www.fitzpatrickeng.com
DRAWING LOG



ISSUE: DESIGN DEVELOP
DATE: 4/26/17

SHEET INFORMATION
DATE OF DRAWING: 4/26/17
DRAWN BY: SRG
JOB NUMBER: 119201