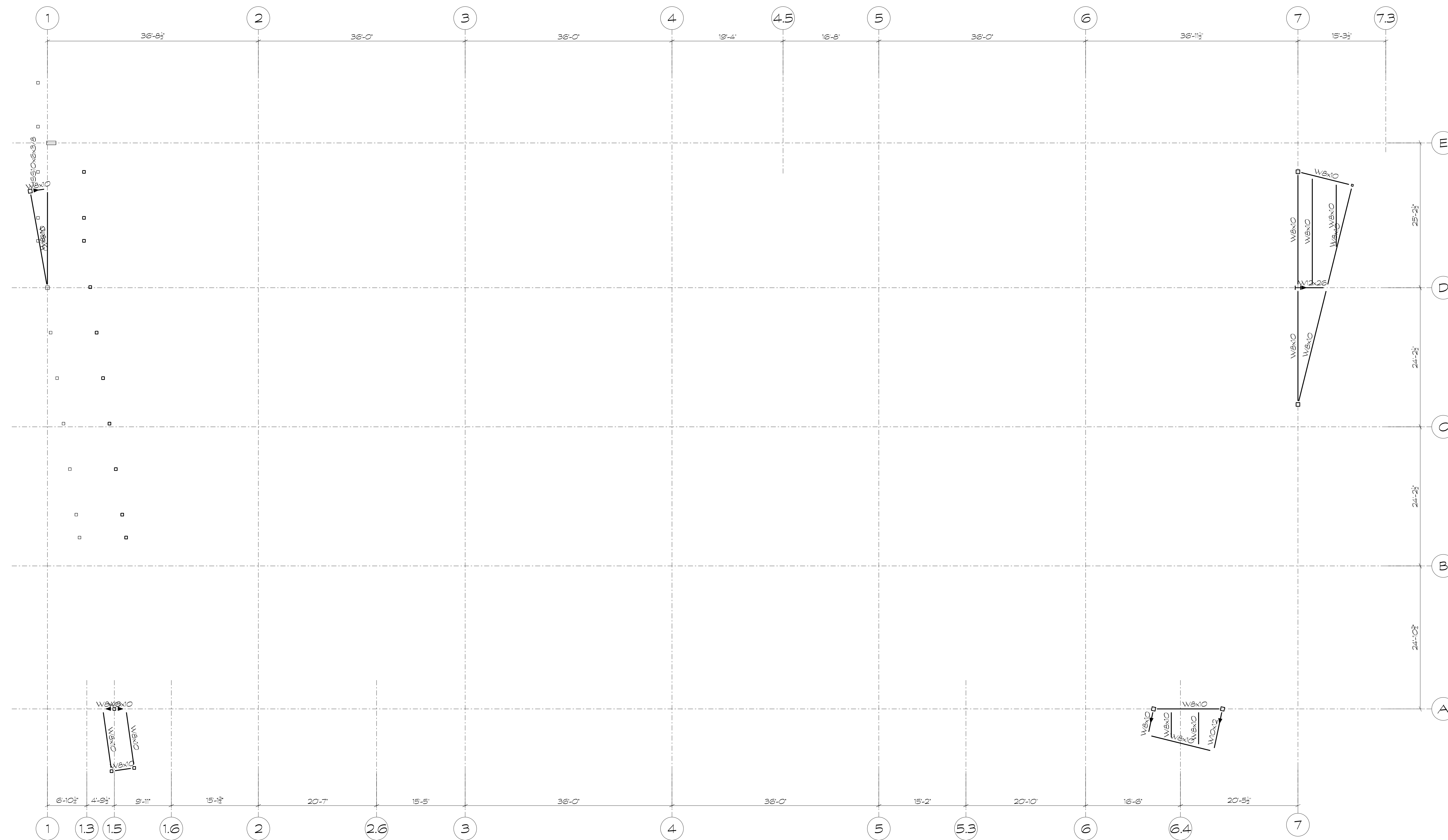


THIS DRAWING AND THE DESIGN SHOWN IS THE PROPERTY OF THE ARCHITECT AND MAY NOT BE REPRODUCED, COPIED OR USED WITHOUT WRITTEN PERMISSION. COPYRIGHT © 2014, INTEC GROUP, INC.



- PLAN NOTES:**
1. TOP OF ROOF FRAMING ELEVATION = (21'-0") UNO.
 2. FOR GENERAL NOTES, SEE SHEETS S300.
FOR TYPICAL ROOF FRAMING DETAILS, SEE SHEET S500.
 3. ROOF DECK IS 1 1/4" 22 GAUGE, TYPE 'B', 360, METAL ROOF DECK.
ROOF ATTACHMENT SHALL BE 5/8" PUDDLE WELDS AT 6' O.C. WITH (X) SIDELAP CONNECTIONS (#10 TEK SCREWS) PER SPAN.
SEE TYPICAL DECK FASTENER DETAIL ON SHEET S500.
 4. DO NOT HANG PIPING AND/OR EQUIPMENT FROM ROOF DECK.
CONTRACTOR TO PROVIDE SUPPORT BEAMS FOR HANGER IF NEEDED.

INTEC

INTEC Group, Inc.
214 W. TREMONT AVENUE
SUITE 301
CHARLOTTE, NC 28203
P: 704.372.7910
www.intecgroup.net



ASANA PARTNERS

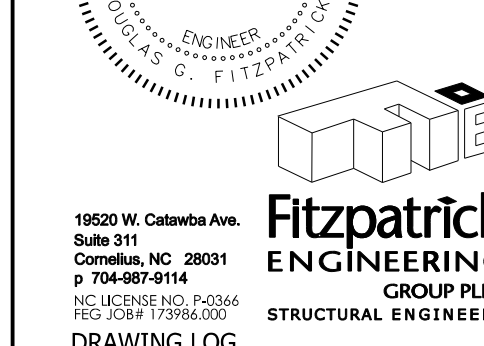
PROJECT

CRESCENT COMMUNITIES

36TH STREET, CHARLOTTE, NC
NoDa RETAIL BUILDING

STAMP

PRELIMINARY
NOT FOR CONSTRUCTION



190210 Carolina Ave.
Suite 211
Charlotte, NC 28201
P: 704.487.9114
F: 704.487.9120
www.fitzpatrickeng.com
DRAWING LOG

ISSUE: DESIGN DEVELOP
DATE: 4/26/17

SHEET INFORMATION
DATE OF DRAWING: 4/26/17
DRAWN BY: SRG
JOB NUMBER: 119201