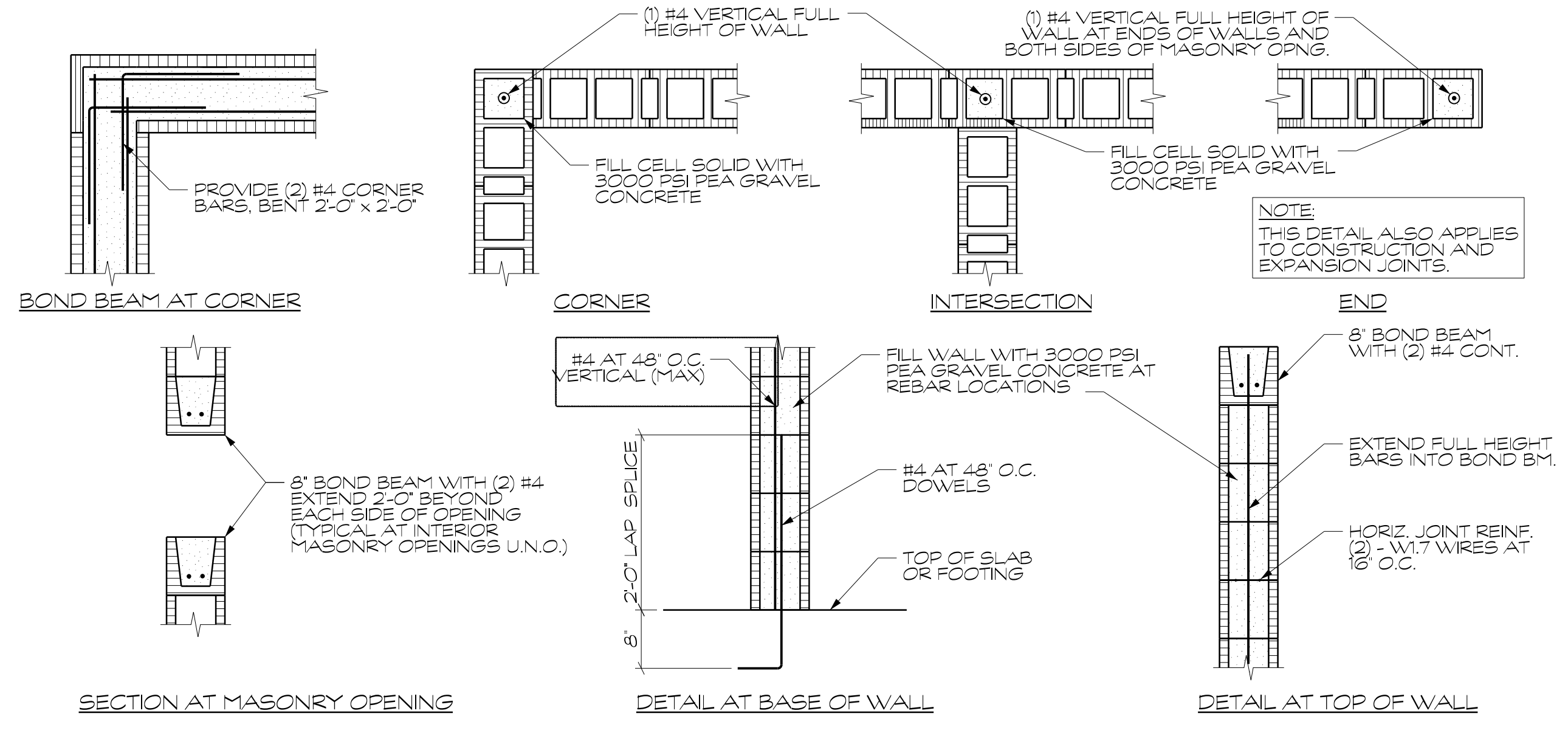
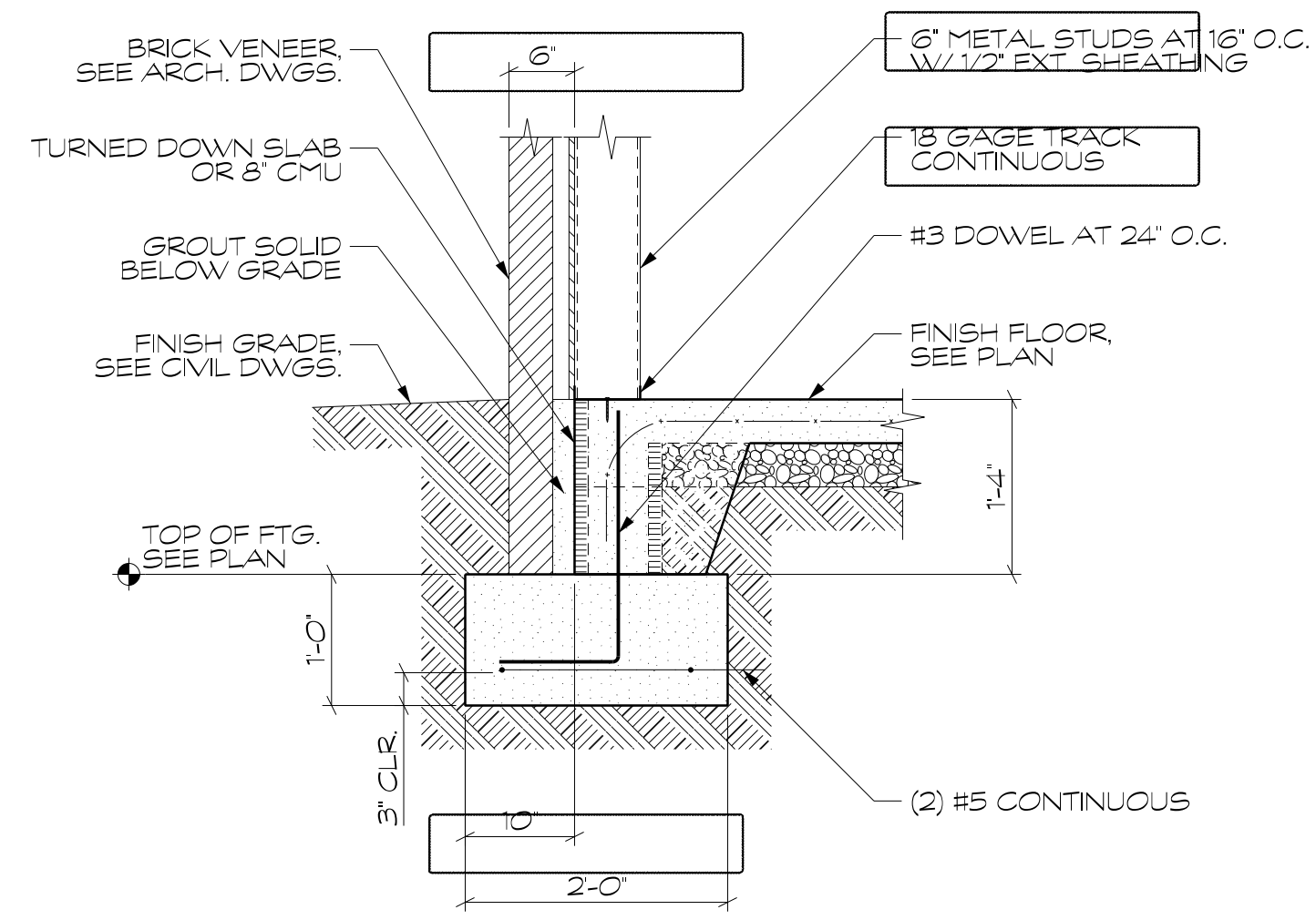
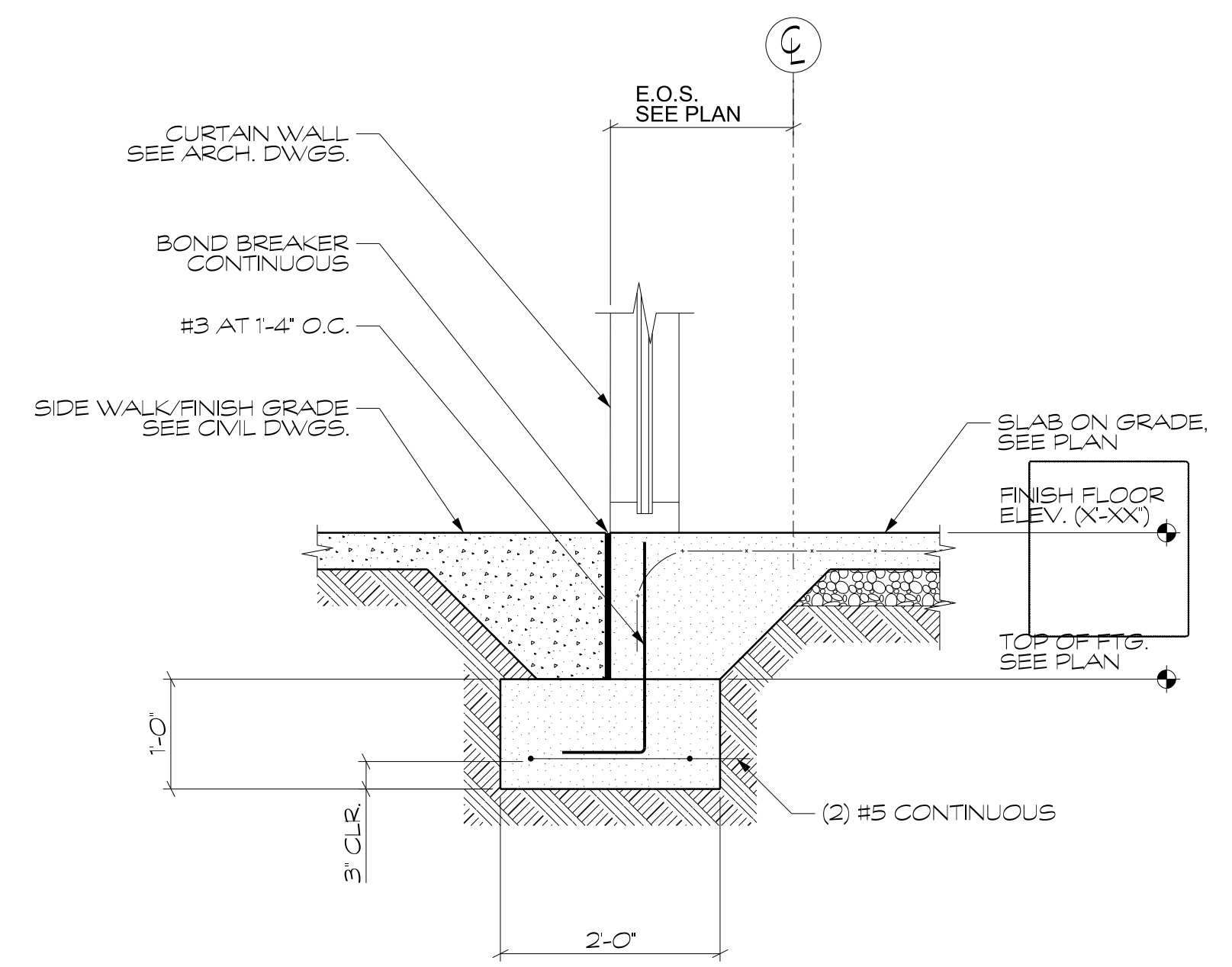


THIS DRAWING AND THE DESIGN SHOWN IS THE PROPERTY OF THE ARCHITECT AND MAY NOT BE REPRODUCED, COPIED OR USED WITHOUT WRITTEN PERMISSION. COPYRIGHT © 2014, INTEC GROUP, INC.



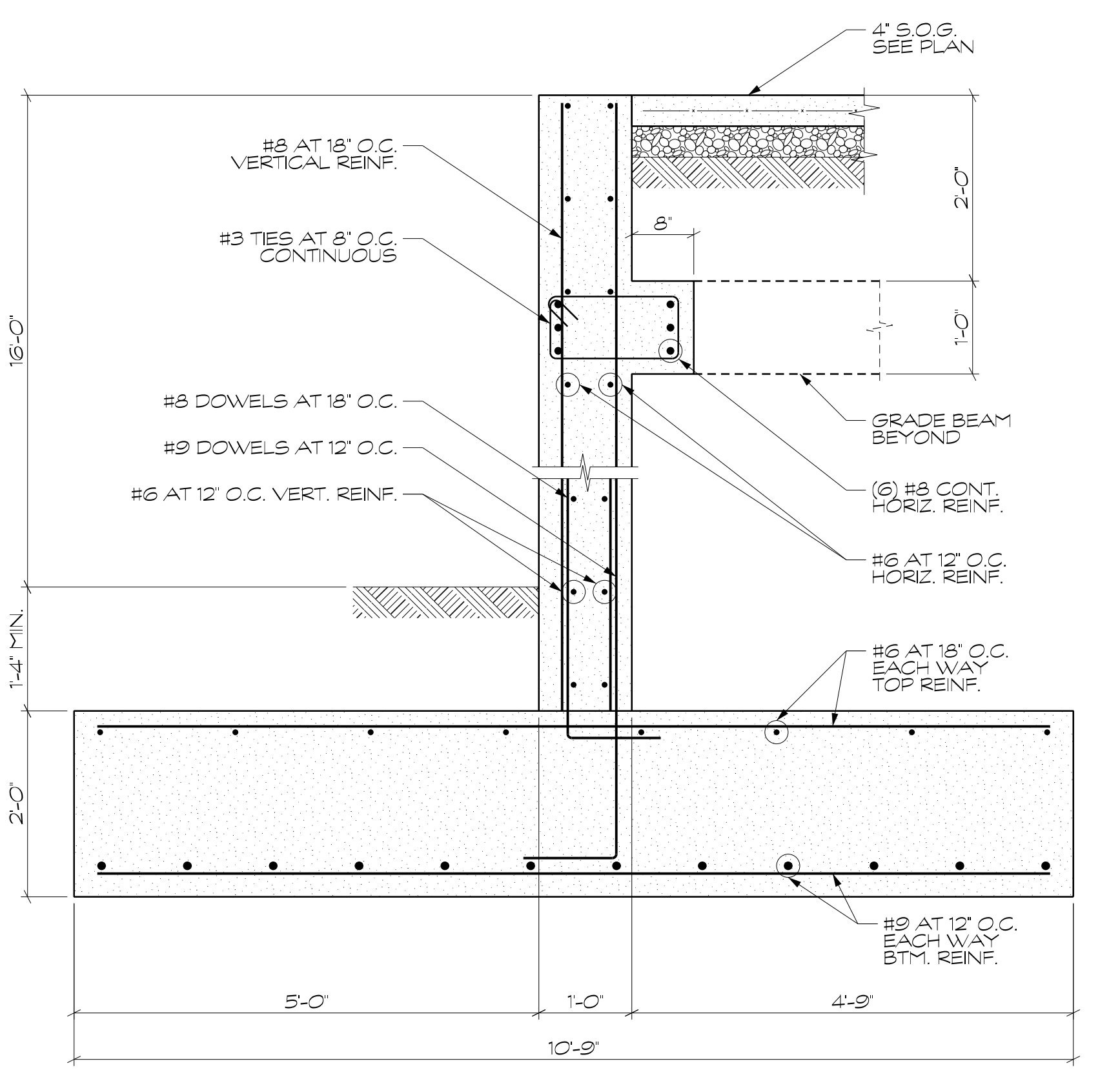
NOTE: UNLESS SHOWN OTHERWISE, ALL CMU WALLS SHALL BE REINFORCED AS SHOWN ABOVE.



1 METAL STUD FOOTING
NO SCALE

2 TYPICAL SEISMIC REINFORCING DETAILS
NO SCALE

3 TYPICAL TURN DOWN SLAB AT DOOR/WINDOW
NO SCALE



4 SECTION
3/4"=1'-0"

PROJECT

CRESCENT COMMUNITIES
36TH STREET, CHARLOTTE, NC
Noda RETAIL BUILDING

STAMP

PRELIMINARY
NOT FOR CONSTRUCTION

1902761 Carolina Ave.
Suite 211
Charlotte, NC 28201
P: 704.487-9114
F: 704.487-9120
www.fitzpatrickeng.com
DRAWING LOG

Fitzpatrick ENGINEERING
STRUCTURAL ENGINEERS
GROUP PLLC

ISSUE: DESIGN DEVELOP
DATE: 4/26/17

SHEET INFORMATION
DATE OF DRAWING: 4/26/17
DRAWN BY: SRG
JOB NUMBER: 119201

S401