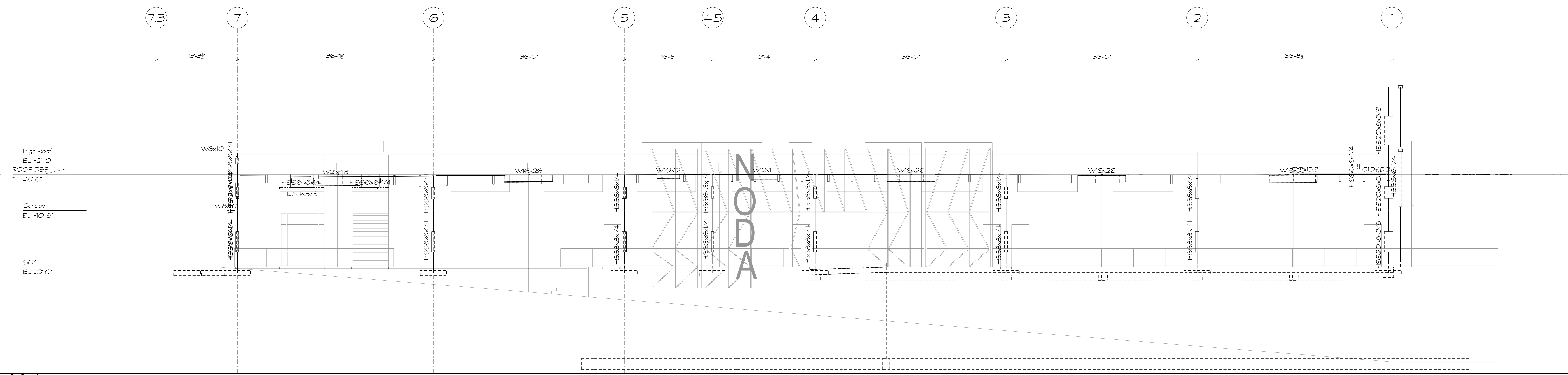
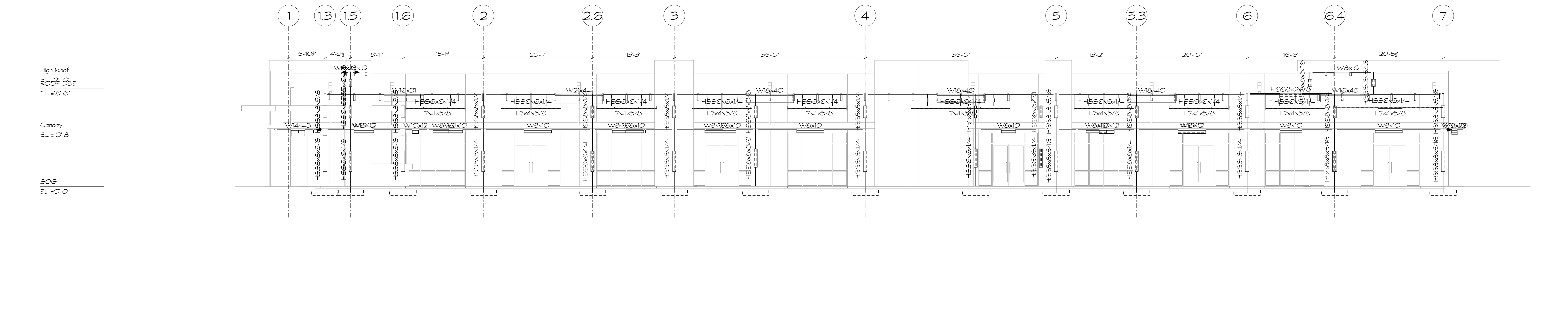


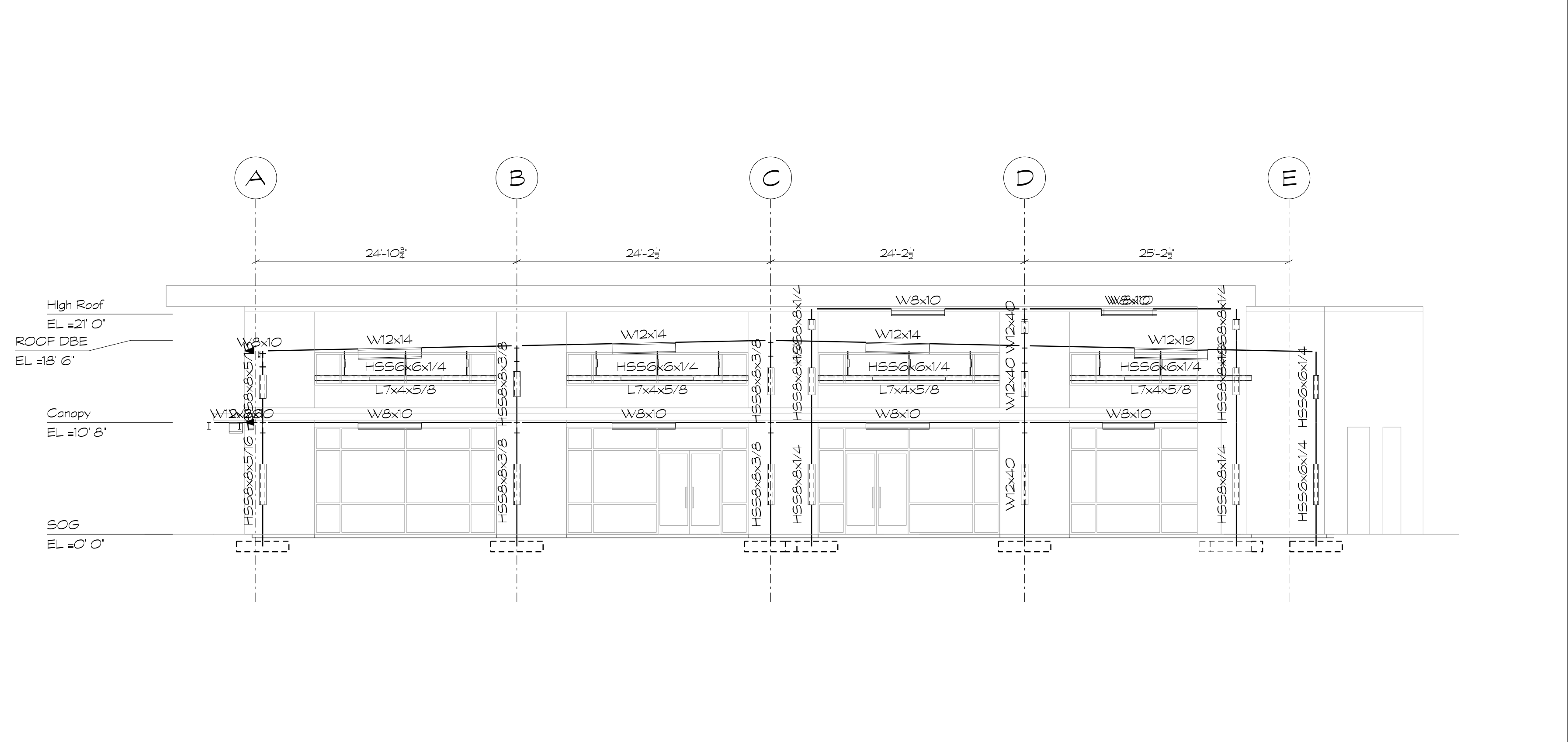
THIS DRAWING AND THE DESIGN SHOWN IS THE PROPERTY OF THE ARCHITECT AND MAY NOT BE REPRODUCED, COPIED OR USED WITHOUT WRITTEN PERMISSION. COPYRIGHT © 2014, INTEC GROUP, INC.



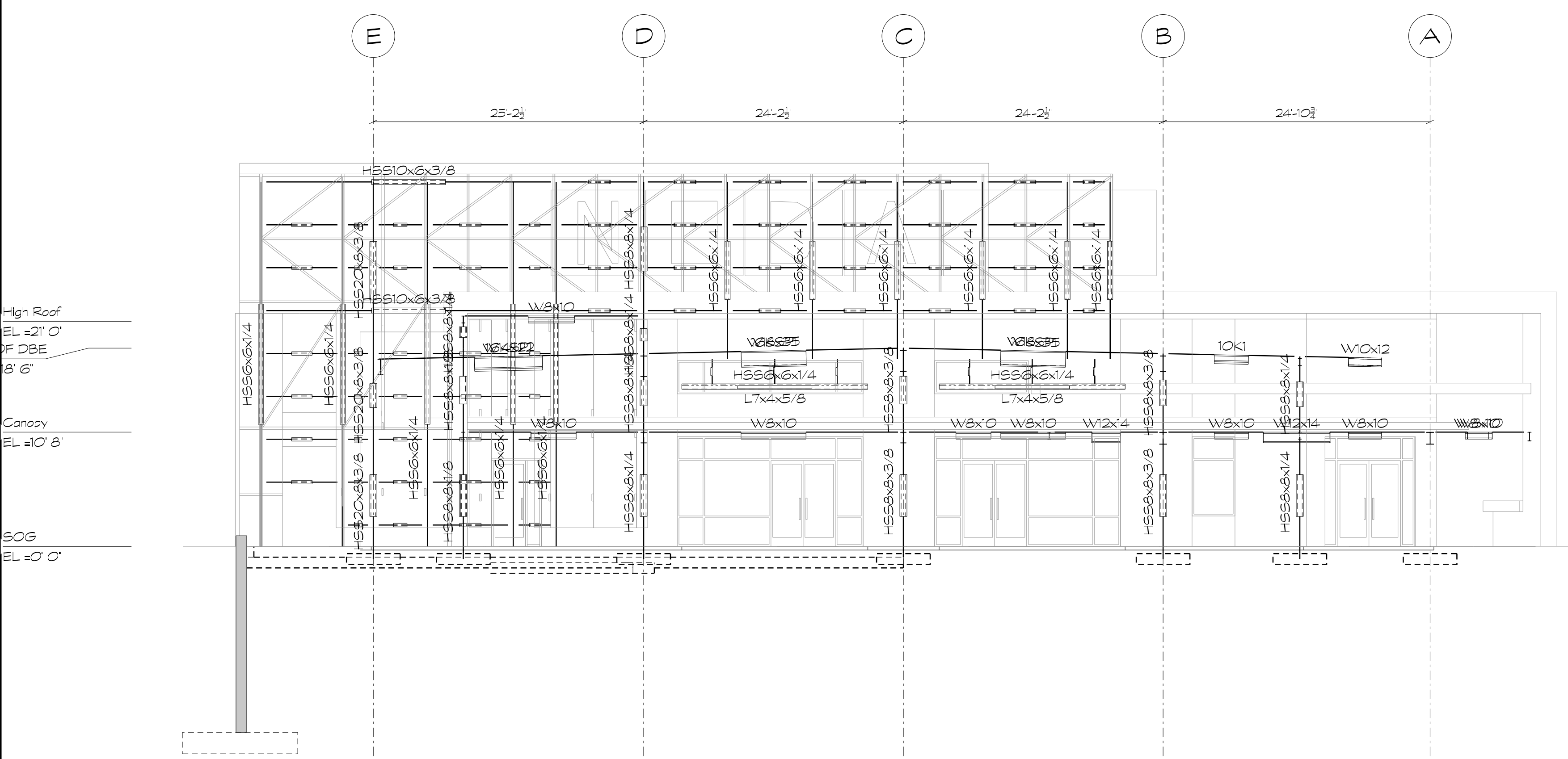
1 NORTH ELEVATION
1/8"=1'-0"



2 SOUTH ELEVATION
1/8"=1'-0"



3 EAST ELEVATION
1/8"=1'-0"



4 WEST ELEVATION
1/8"=1'-0"

PROJECT

CRESCENT COMMUNITIES
36TH STREET, CHARLOTTE, NC
Noda RETAIL BUILDING

STAMP

PRELIMINARY
NOT FOR CONSTRUCTION

Fitzpatrick ENGINEERING GROUP, INC.
STRUCTURAL ENGINEERS
DRAWING LOG

ISSUE: DESIGN DEVELOP
DATE: 4/26/17

SHEET INFORMATION
DATE OF DRAWING: 4/26/17
DRAWN BY: SRG
JOB NUMBER: 119201

S600