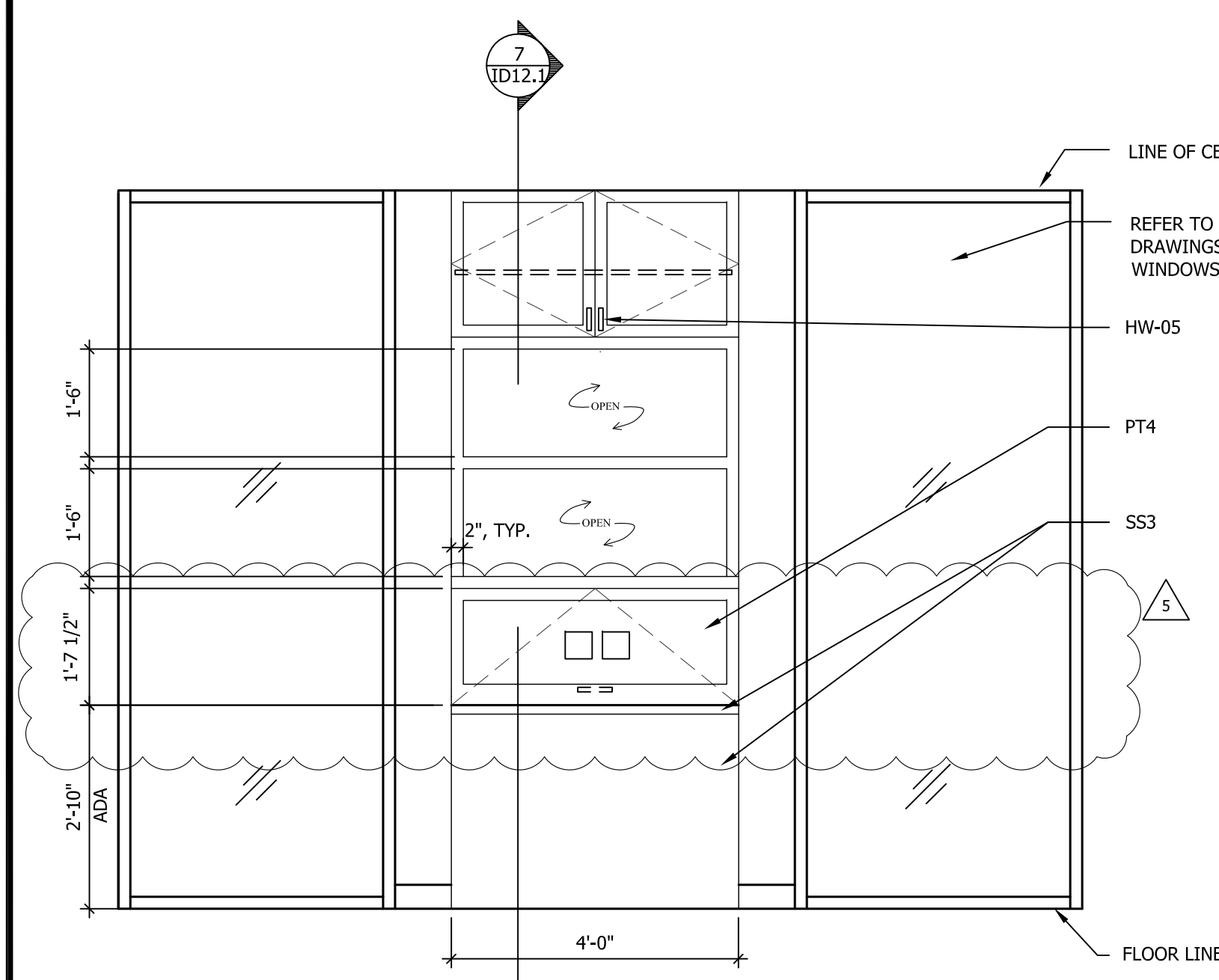
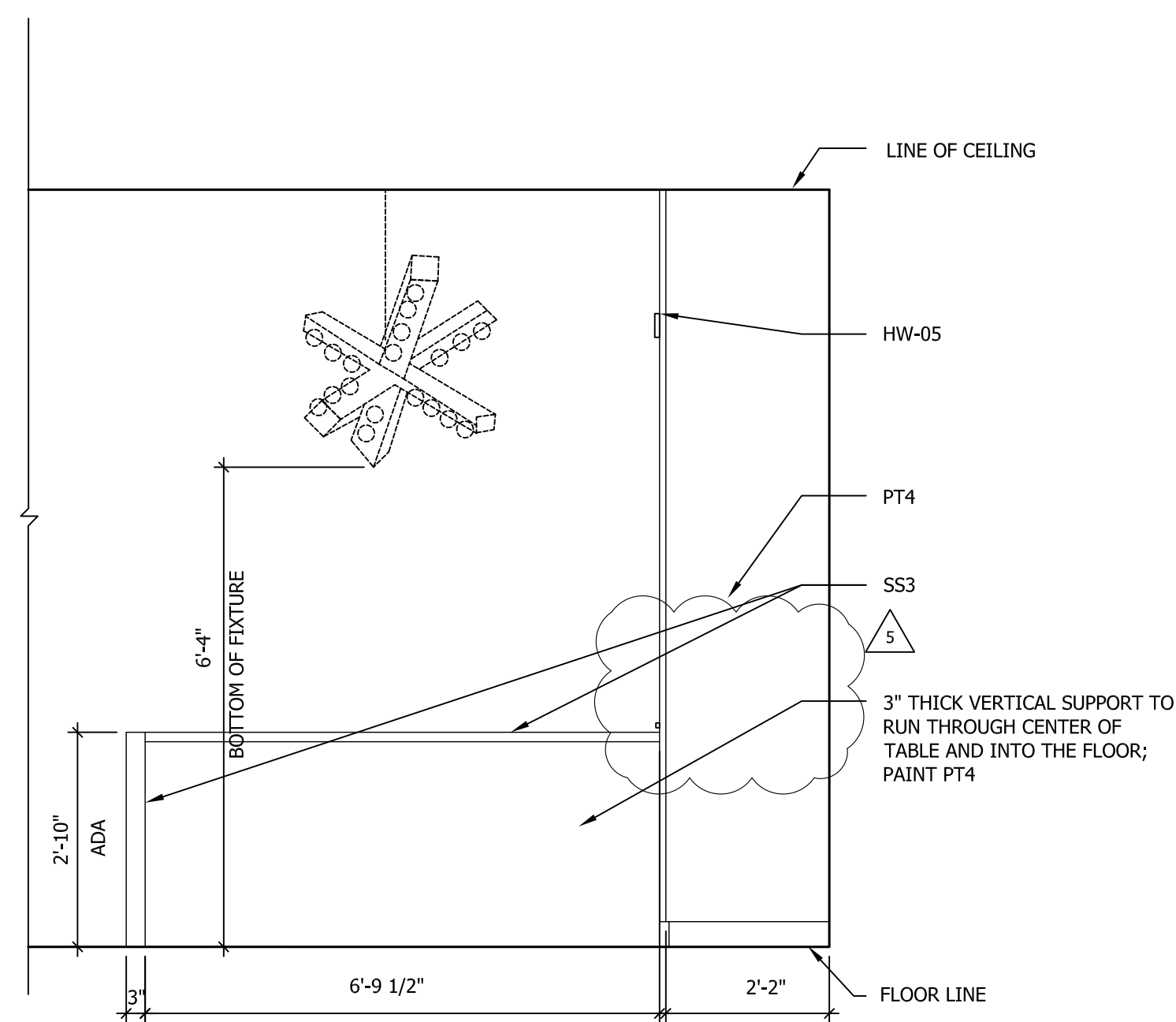


THIS DRAWING AND THE DESIGN SHOWN IS THE PROPERTY OF THE ARCHITECT AND MAY NOT BE REPRODUCED, COPIED OR USED WITHOUT WRITTEN PERMISSION. COPYRIGHT © 2016, INTEC GROUP, INC.



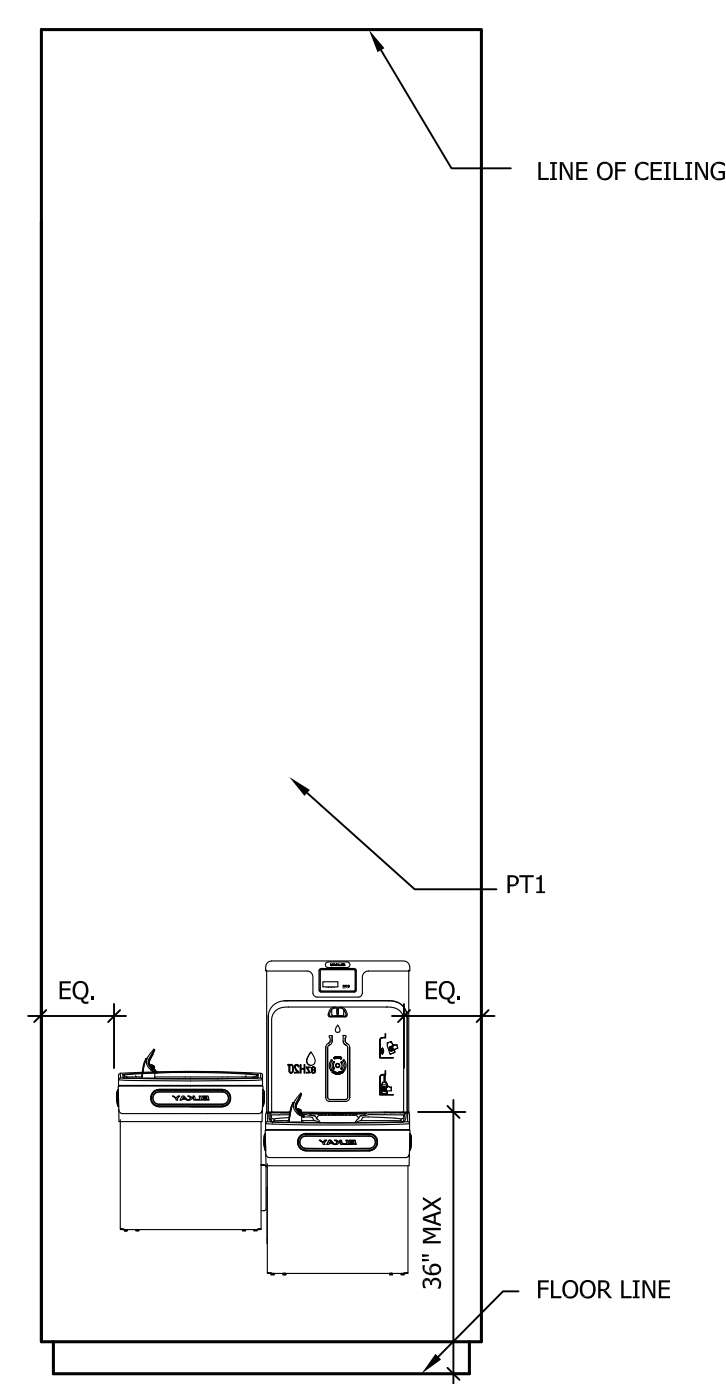
**1 OFFICE- BUILT-IN**

ID11.1 SCALE: 1/2" = 1'-0"



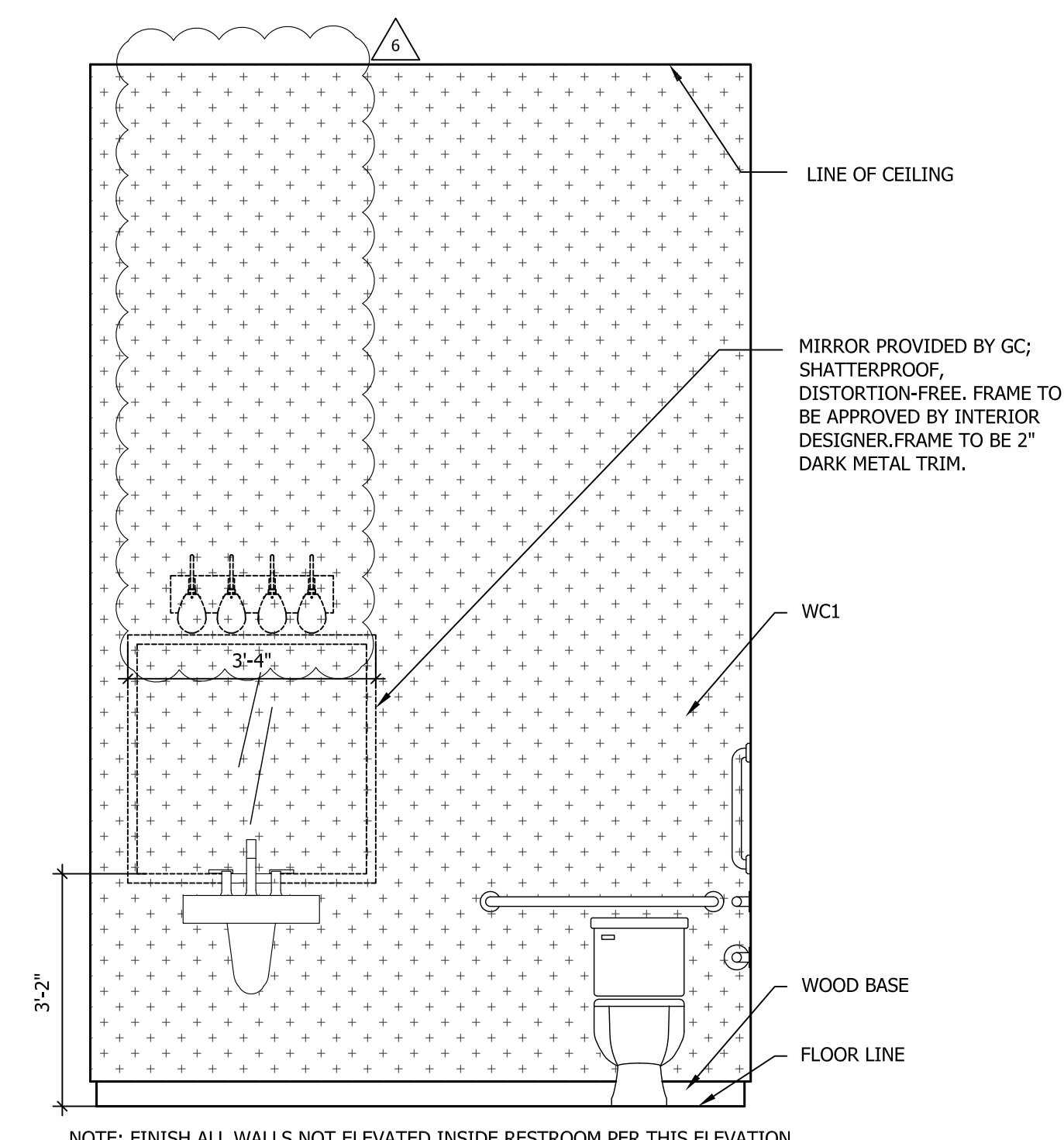
**2 OFFICE- BUILT-IN**

ID11.1 SCALE: 1/2" = 1'-0"



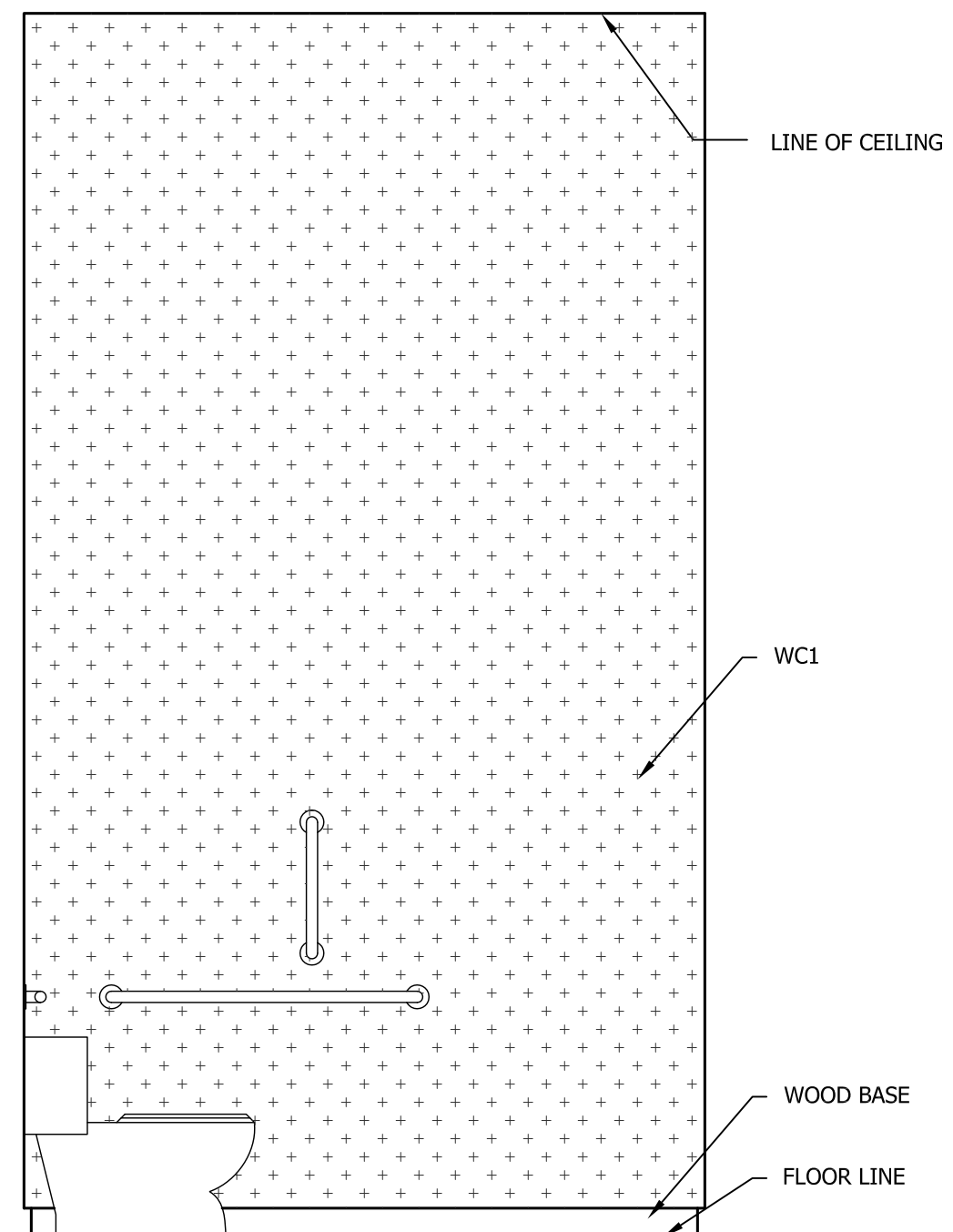
**3 WATER FOUNTAIN**

ID11.1 SCALE: 1/2" = 1'-0"



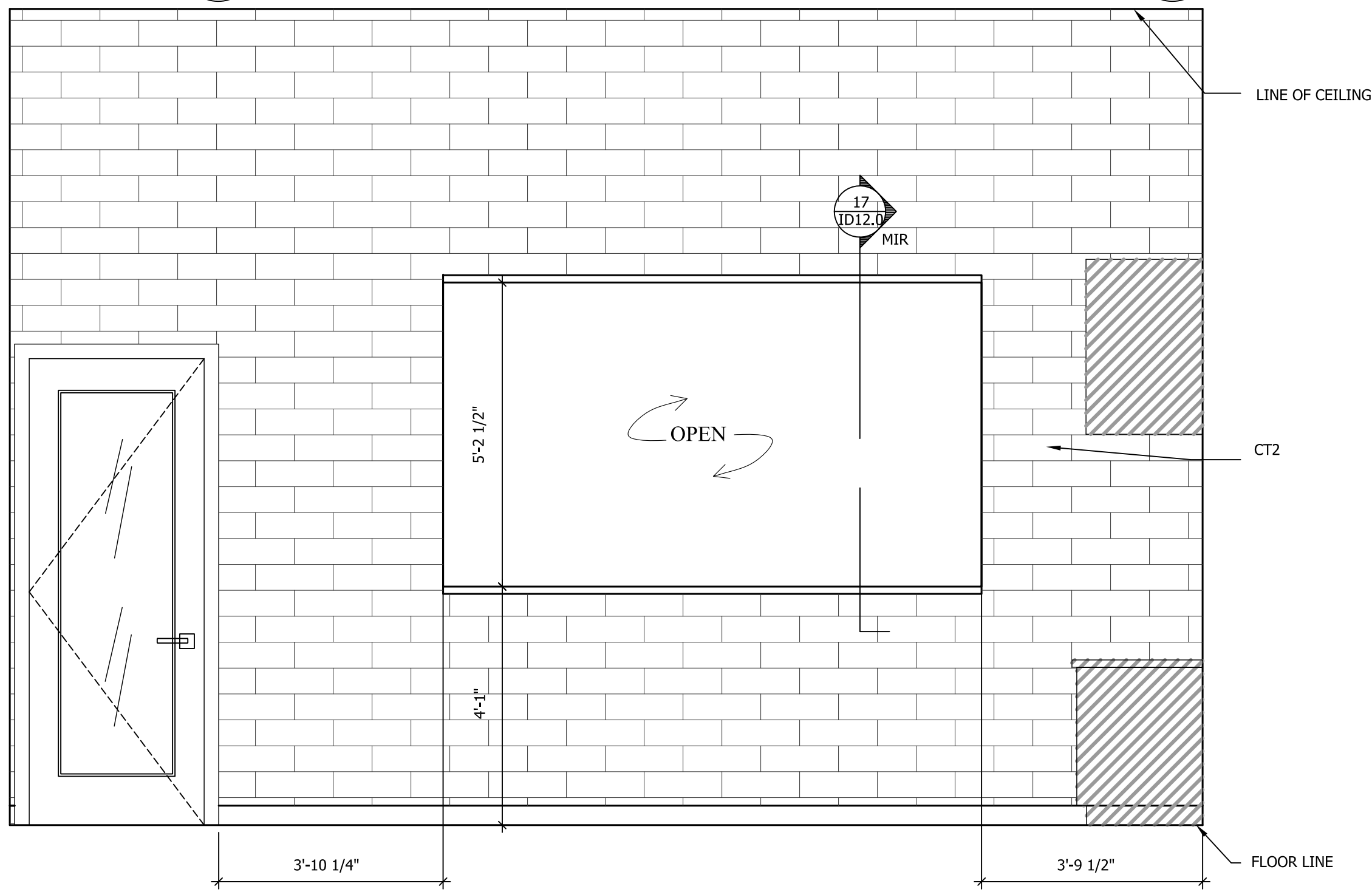
**4 LEASING CENTER RESTROOM**

ID11.1 SCALE: 1/2" = 1'-0"



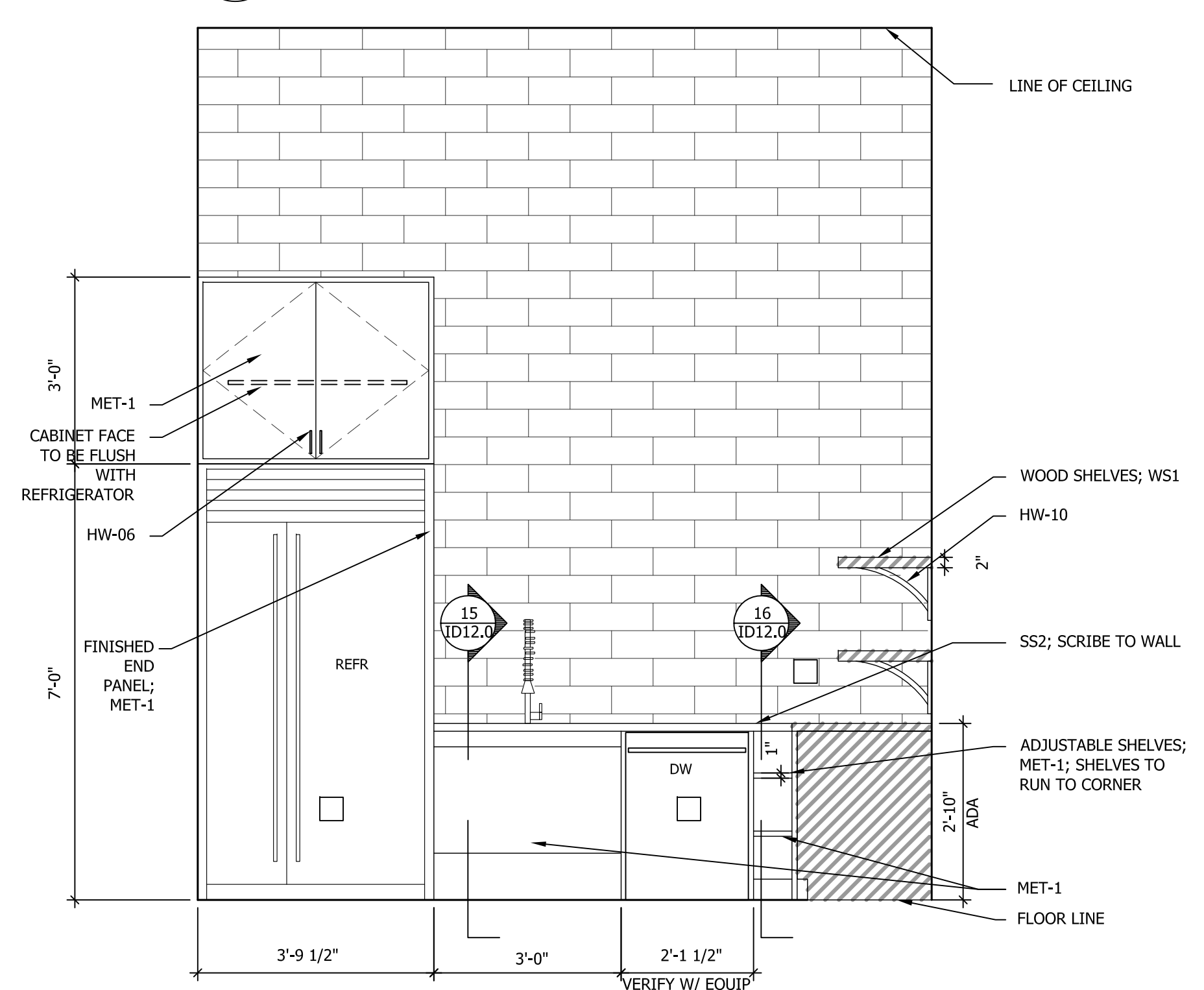
**5 LEASING CENTER RESTROOM**

ID11.1 SCALE: 1/2" = 1'-0"



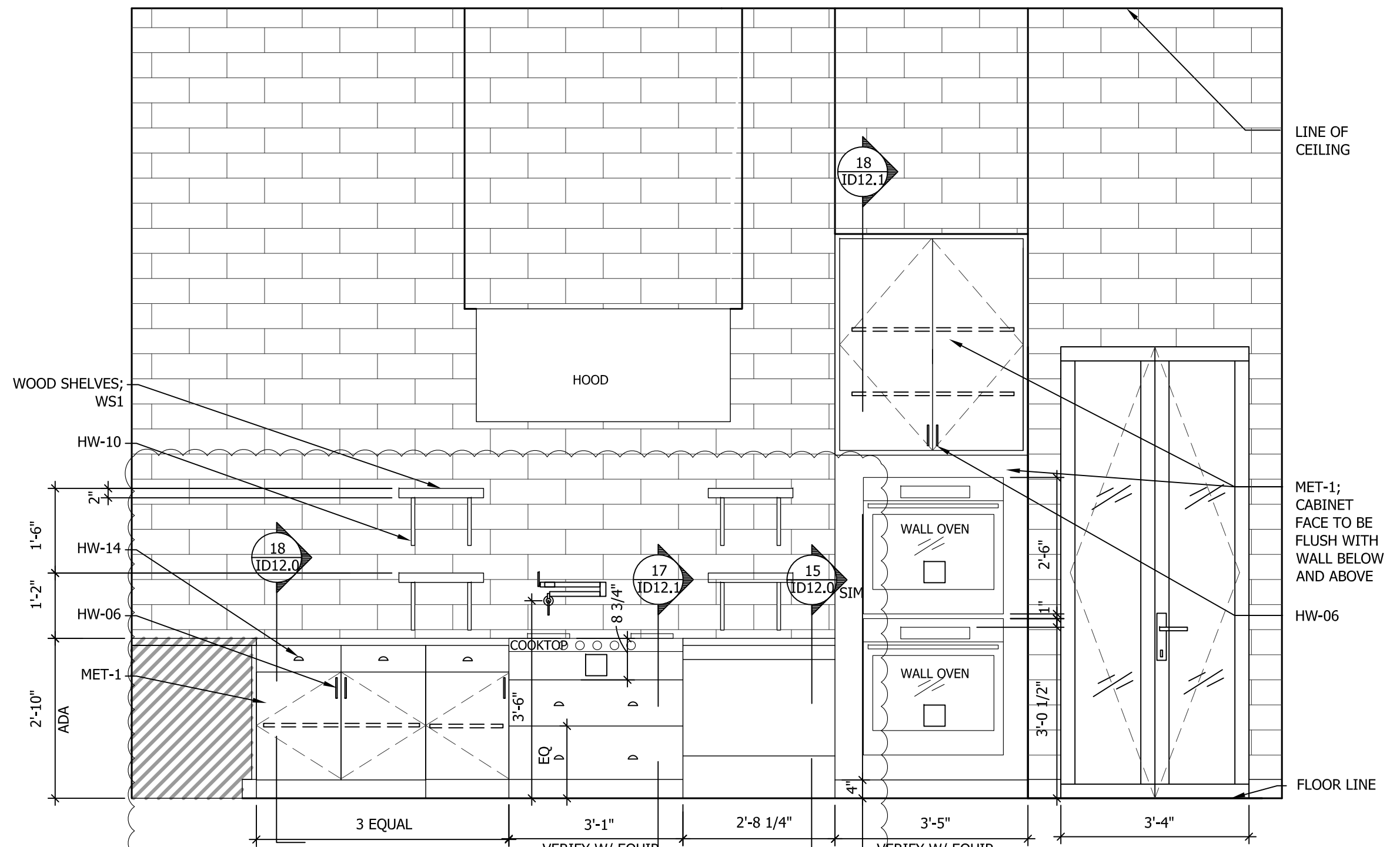
**6 LEASING CENTER PRIVATE KITCHEN**

ID11.1 SCALE: 1/2" = 1'-0"



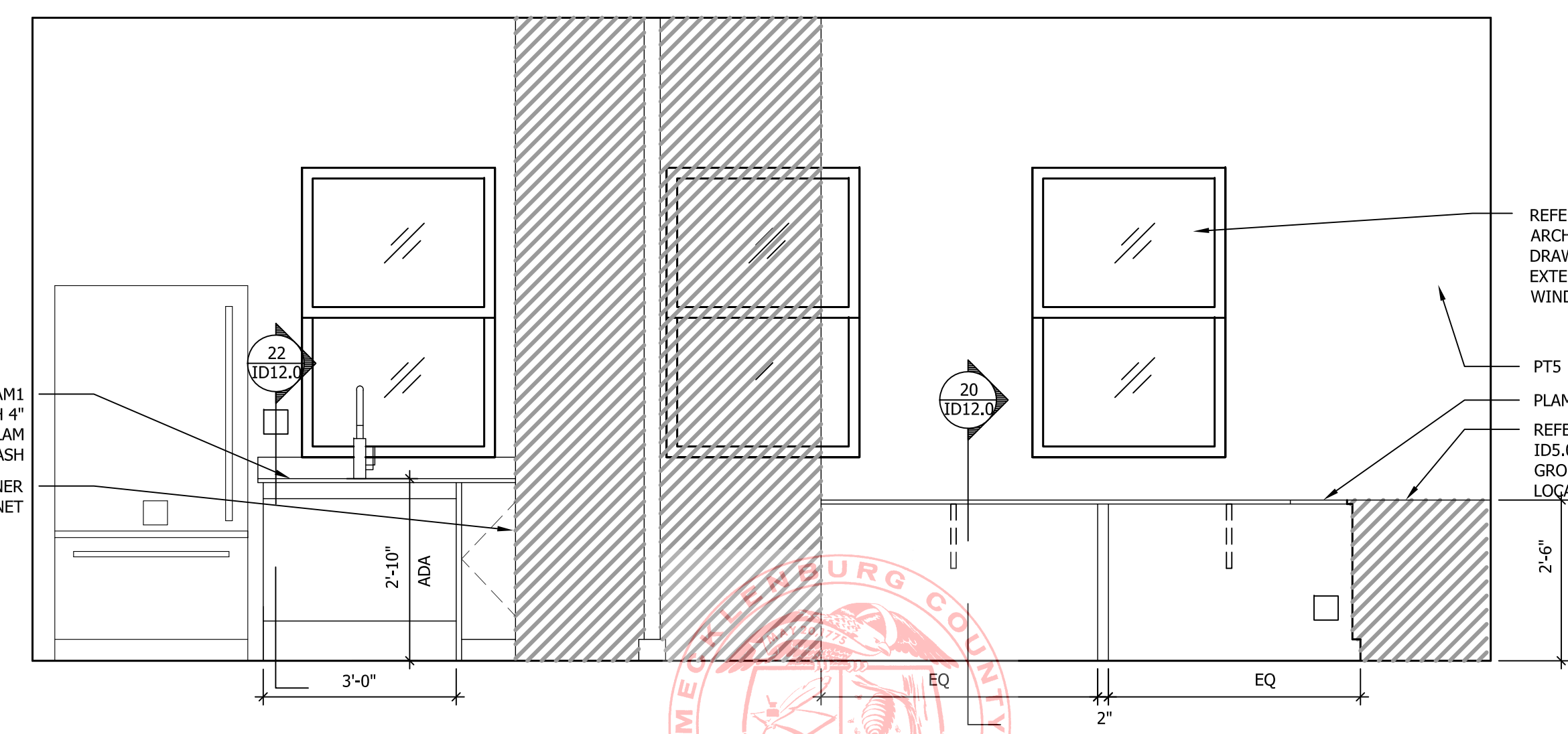
**7 LEASING CENTER PRIVATE KITCHEN**

ID11.1 SCALE: 1/2" = 1'-0"



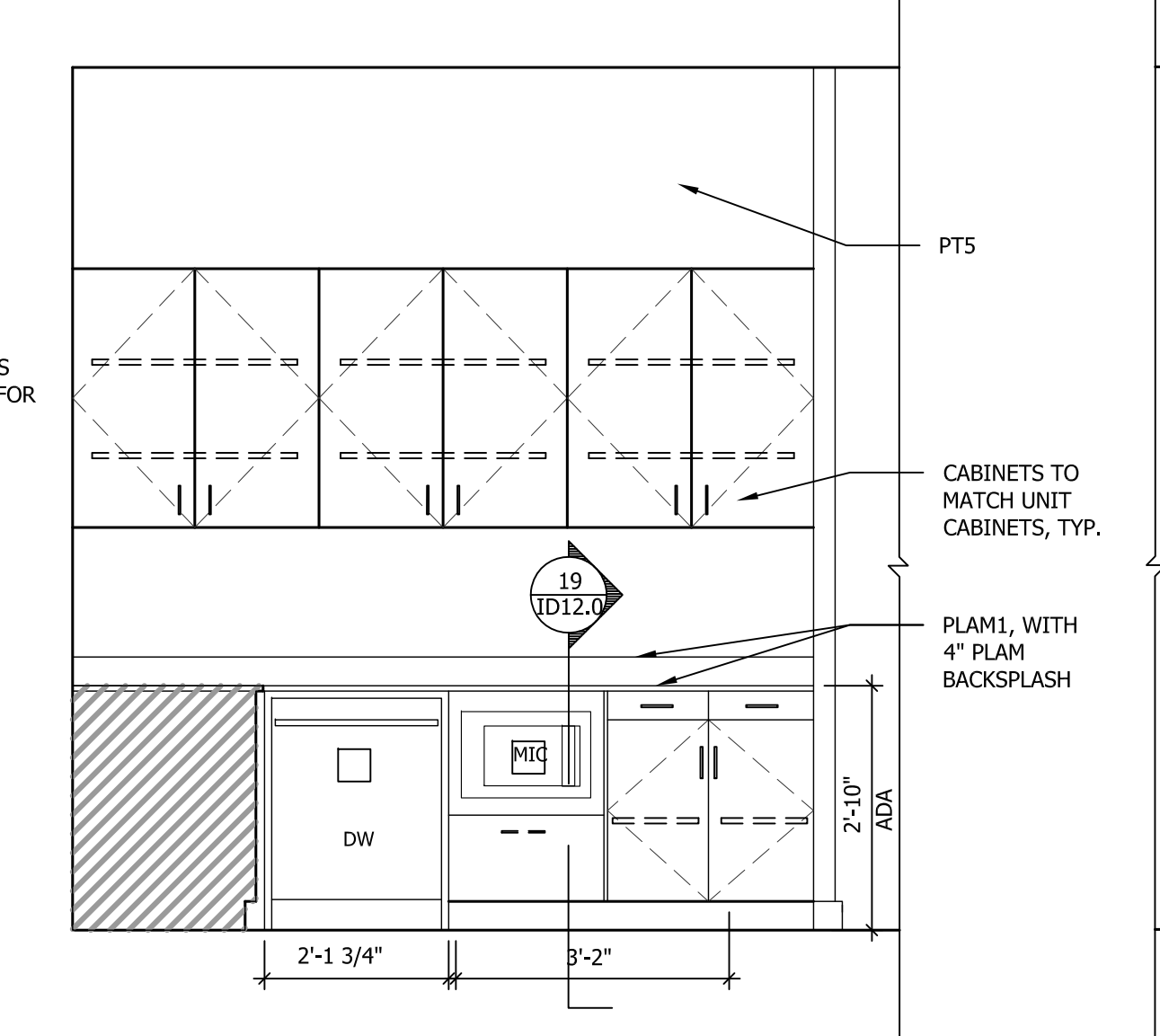
**8 LEASING CENTER PRIVATE KITCHEN**

ID11.1 SCALE: 1/2" = 1'-0"



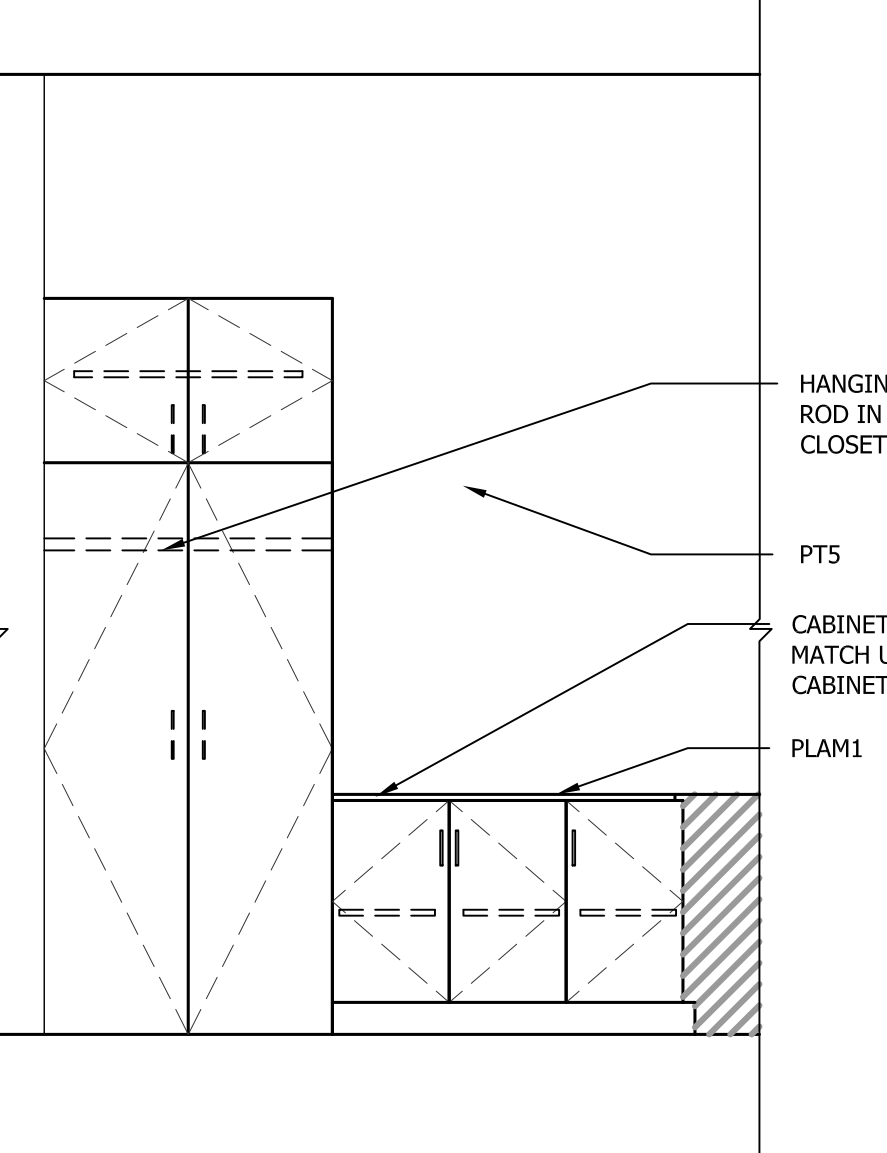
**9 OFFICE**

ID11.1 SCALE: 1/2" = 1'-0"



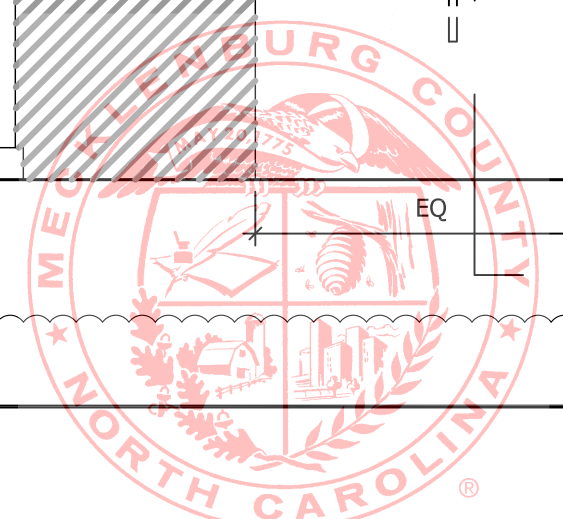
**10 OFFICE MILLWORK**

ID11.1 SCALE: 1/2" = 1'-0"



**11 OFFICE MILLWORK**

ID11.1 SCALE: 1/2" = 1'-0"



MECKLENBURG COUNTY  
CODE ENFORCEMENT  
The Design In These Construction Documents Have Been Reviewed For Compliance With The State Building Code. It Is The Responsibility Of The Contractor To Construct This Project With Good Engineering Practice And In Compliance With The North Carolina State Building Code.

**INTEC**

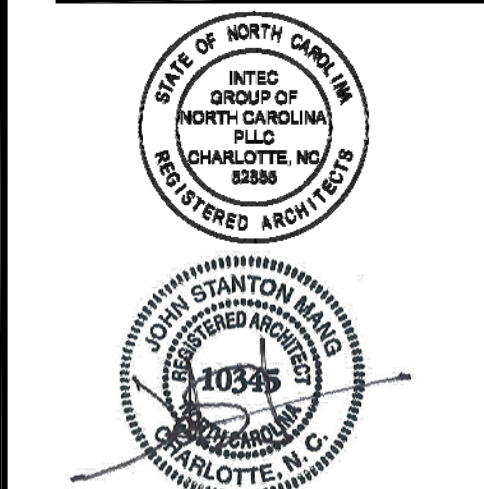
INTEC Group, Inc.  
214 W. TREMONT AVENUE  
SUITE 301  
CHARLOTTE, NC 28203  
P: 704.372.7910  
www.intecgroup.net

**CRESCENT COMMUNITIES**

PROJECT

**CRESCENT PROVIDENCE FARMS**  
11209 Providence Rd., Charlotte, NC 28270  
**INTERIOR DESIGN**

STAMP



07/07/16

DRAWING LOG  
FOR CONSTRUCTION/ GMP  
07/07/16

OWNER COMMENTS  
03/08/16  
ADDENDUM 5  
04/22/16  
ADDENDUM 6  
07/07/16

SHEET INFORMATION  
DATE OF DRAWING: 07/07/16  
DRAWN BY: CPD  
JOB NUMBER: 106701

INTERIOR ELEVATIONS

**ID11.1**