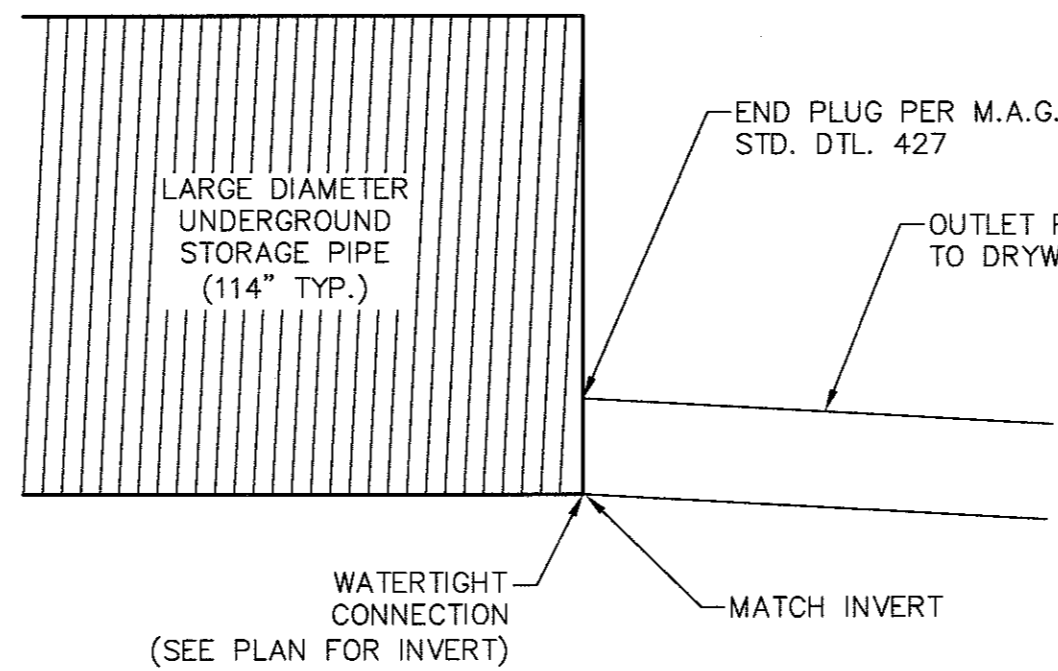


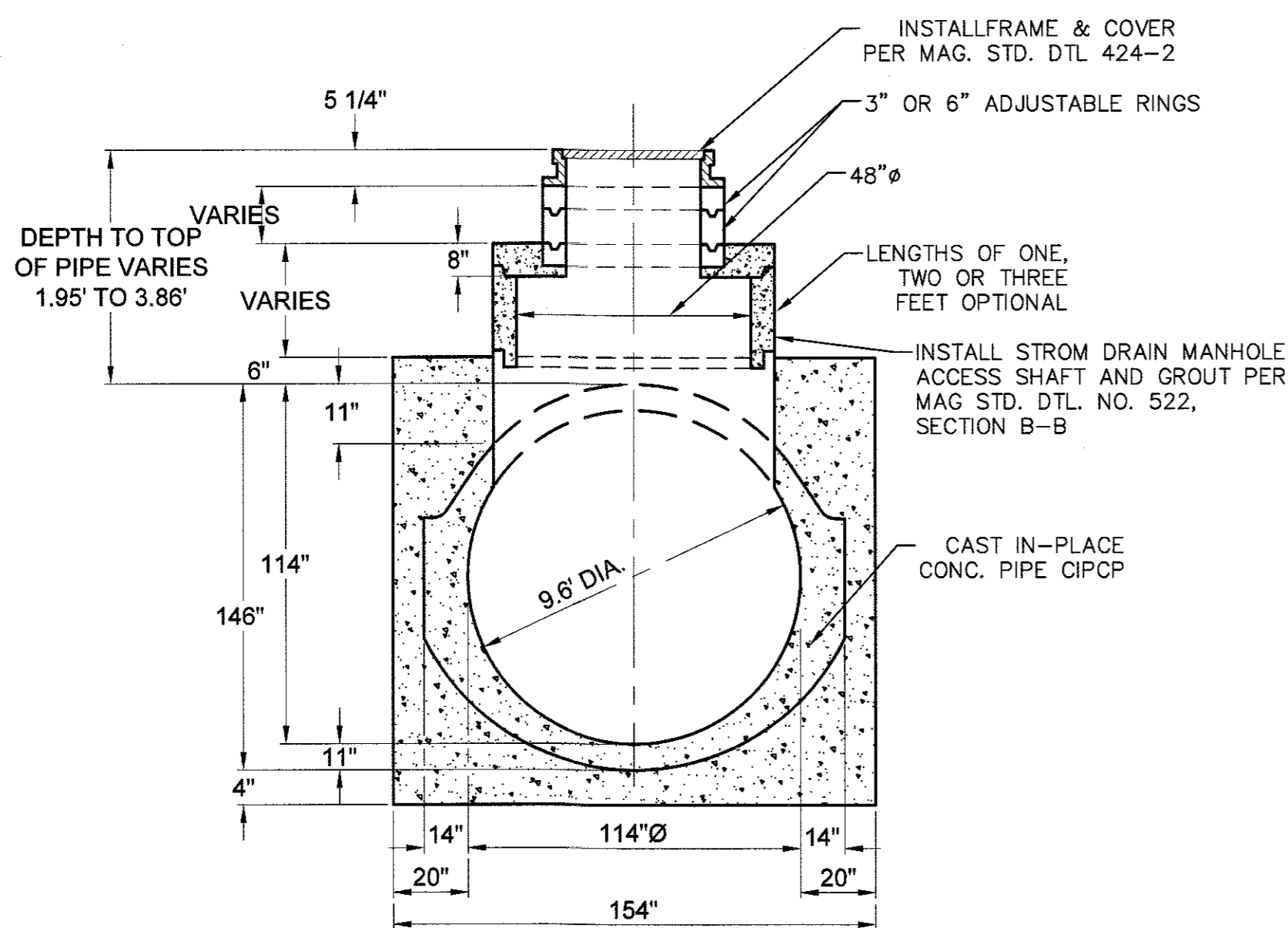
LATERAL PIPE CONNECTION TO STORAGE PIPE
N.T.S.

NOTES:

1. PRECAST TEE SHALL BE INSTALLED WHERE THE MAINLINE PIPE IS SMALLER THAN THE MINIMUM OR THE CONNECTING PIPE IS LARGER THAN 24".
2. THE BELL END OF THE PRECAST CONCRETE PIPES SHALL BE INSTALLED AS SHOWN WHILE CONCRETE OF MAINLINE PIPE IS WET.
3. TRENCH WALL TO BE EXCAVATED AS NECESSARY PRIOR TO POURING MAINLINE PIPE TO ACCOMMODATE LATERAL STUB.
4. AXIS OF LATERAL STUB SHALL BE AS PER PLAN AND CROSS SECTION.
5. THE LATERAL STUB SHALL SATISFY STRENGTH REQUIREMENTS AS SPECIFIED FOR THE LATERAL PIPE.
6. LATERALS FOR FUTURE CONNECTION SHALL BE MARKED. (SEE MAG DETAIL 427)
7. CONNECTION PIPE DIAMETER 'D' PER PLAN.



STORAGE OUTLET DETAIL
N.T.S.

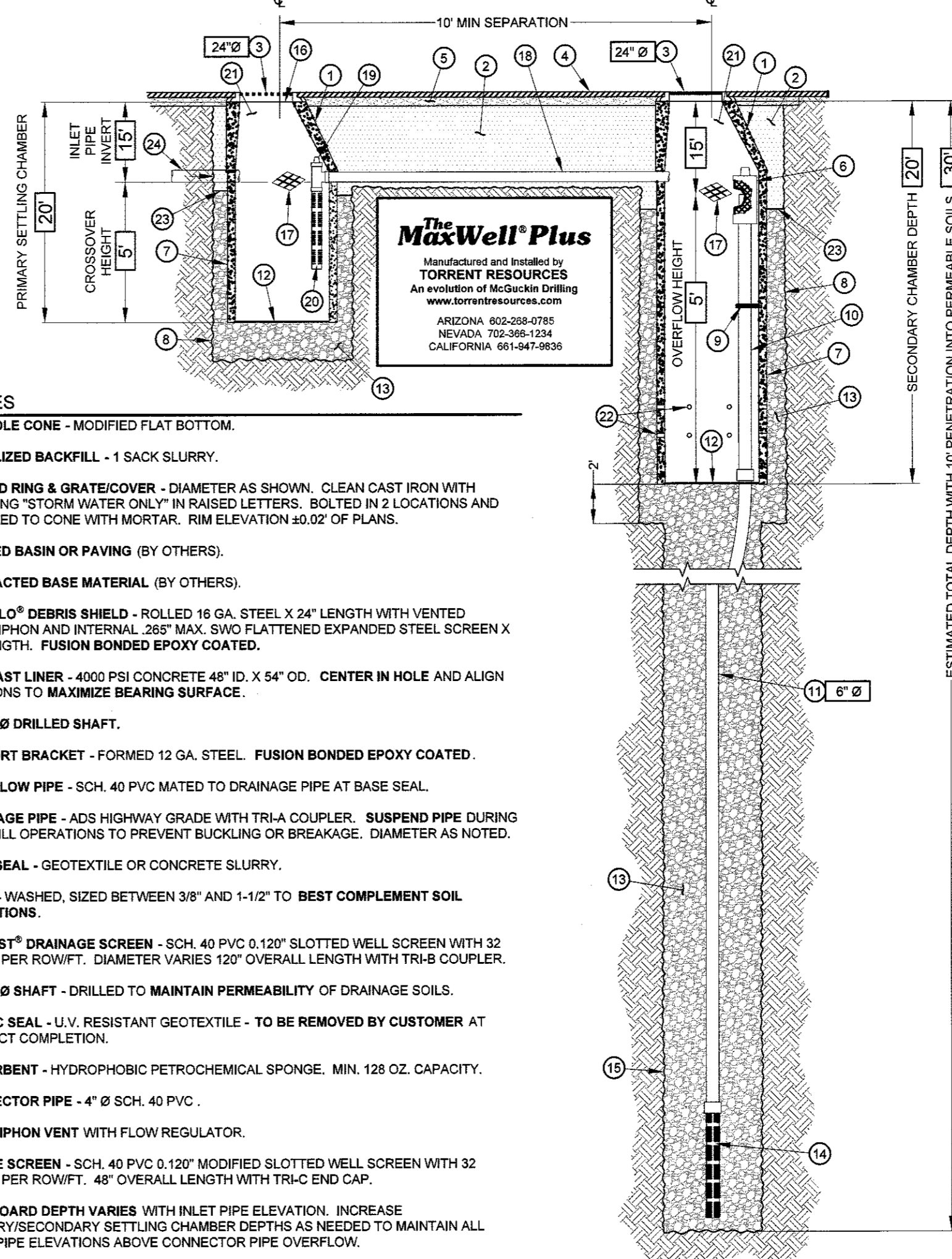


STORM DRAIN M.H. ACCESS SHAFT
N.T.S.

OWNER NOTES

- THE QUALIFICATIONS BELOW PROVIDE ADDITIONAL CLARITY TO THE REQUIRED WORK INCLUDED IN THE CONTRACT DOCUMENTS.
- DIVISION 1 - GENERAL**
14. ALL COSTS AND FEES ASSOCIATED WITH COMPLIANCE, MONITORING, CORRECTIVE WORK REQUIRED FOR DAMAGE, AND REPORTING FOR NATIONAL POLLUTANT DISCHARGE ELIMINATION SYSTEM (NPDES) OR STORM WATER PREVENTION PLANS (SWPP) OR SIMILAR PROGRAMS IS INCLUDED.
 16. OWNER SHALL PROVIDE 3 BENCHMARKS TO BE USED FOR CONSTRUCTION STAKING AND LAYOUT. CONTRACTOR IS RESPONSIBLE FOR ALL FIELD ENGINEERING AND LAYOUT.
 17. CONTRACTOR IS RESPONSIBLE FOR ALL AS-BUILT SURVEYS OR DRAWINGS REQUIRED BY ANY AUTHORITY HAVING JURISDICTION, INCLUDING BIM MODELS AS REQUIRED. CONTRACTOR TO PROVIDE AS-BUILT FOUNDATION SURVEY WITHIN NINETY (90) AFTER PLACING FOUNDATION WORK. AN ALTA SURVEY IS NOT INCLUDED.
 20. ALL SOILS & MATERIAL TESTING, ENERGY TESTING, OR ANY OTHER REQUIRED 3RD PARTY TESTING NOT SPECIFICALLY STATED OTHERWISE WILL BE PROVIDED BY OWNER.
 21. CONTRACTOR SHALL PROVIDE ALL PUMPING AND DEWATERING AS REQUIRED TO PERFORM THE WORK.
- DIVISION 2 - SITE**
2. CONTRACTOR IS RESPONSIBLE FOR COORDINATING AND SCHEDULING ALL WATER, SEWER, POWER, GAS, OR OTHER UTILITIES ON SITE, INCLUDING TAPS AND METER SETTING. OWNER IS RESPONSIBLE FOR SECURING SERVICE AGREEMENTS WITH EACH PROVIDER, AND MAKING PAYMENTS WITHIN THE SPECIFIED PUBLISHED TIME FRAMES IN EACH RESPECTIVE AGREEMENT AS REQUIRED TO ACQUIRE METERS AND/OR INITIATE SERVICE.
 3. CONTRACTOR SHALL ALSO BE RESPONSIBLE FOR COORDINATING WITH THE UTILITY COMPANIES TO DETERMINE THE AMOUNT, MATERIAL AND INSTALLATION SPECIFICATIONS, AND LOCATIONS OF REQUIRED SLEEVING. CONTRACTOR SHALL BE RESPONSIBLE FOR ANY ADDITIONAL COSTS INCURRED RESULTING FROM THE FAILURE TO COORDINATE WITH THE UTILITY COMPANIES.
 4. CONTRACTOR SHALL BE RESPONSIBLE FOR FURNISHING AND INSTALLING ALL SLEEVING ASSOCIATED WITH ALL DESIGN BUILD SCOPES OF WORK.
 5. CONTRACTOR SHALL COORDINATE THE INSTALLATION AND ROUTING OF ALL UTILITIES INCLUDING ELECTRICAL, WATER, SEWER AND FIRE SERVICE. THIS INCLUDES THE COORDINATION OF EACH UTILITY ENTRY INTO EACH BUILDING PRIOR TO CONSTRUCTION. CONTRACTOR IS RESPONSIBLE FOR CONTACTING AND COORDINATING WITH EACH UTILITY PROVIDER IN SUFFICIENT TIME TO ALLOW THE UTILITY PROVIDER TO COORDINATE AND INSTALL THE WORK, SO AS TO NOT DELAY THE PROJECT. CONTRACTOR IS NOT RESPONSIBLE FOR UTILITY COMPANY DELAYS, NON-PERFORMANCE, OR ASSOCIATED ACCELERATION COSTS.
- DIVISION 7 - THERMAL AND MOISTURE**
1. CONTRACTOR INCLUDES CONCRETE SPLASH BLOCKS AT ALL DOWNSPOUT LOCATIONS NOT TIED IN TO THE STORM SYSTEM.

The MaxWell® Plus Drainage System Detail And Specifications



NOTES

1. MANHOLE CONE - MODIFIED FLAT BOTTOM.
2. STABILIZED BACKFILL - 1 SACK SLURRY.
3. BOLTED RING & GRATE/COVER - DIAMETER AS SHOWN. CLEAN CAST IRON WITH WORDING "STORM WATER ONLY" IN RAISED LETTERS. BOLTED IN 2 LOCATIONS AND SECURED TO CONE WITH MORTAR. RIM ELEVATION ±0.02' OF PLANS.
4. GRADED BASIN OR PAVING (BY OTHERS).
5. COMPACTED BASE MATERIAL (BY OTHERS).
6. PUREFLO® DEBRIS SHIELD - ROLLED 16 GA. STEEL X 24" LENGTH WITH VENTED ANTI-SIPHON AND INTERNAL .205" MAX. SWO FLATTENED EXPANDED STEEL SCREEN X 12" LENGTH. FUSION BONDED EPOXY COATED.
7. PRE-CAST LINER - 4000 PSI CONCRETE 48" ID. X 54" OD. CENTER IN HOLE AND ALIGN SECTIONS TO MAXIMIZE BEARING SURFACE.
8. MIN. 6" Ø DRILLED SHAFT.
9. SUPPORT BRACKET - FORMED 12 GA. STEEL. FUSION BONDED EPOXY COATED.
10. OVERFLOW PIPE - SCH. 40 PVC MATED TO DRAINAGE PIPE AT BASE SEAL.
11. DRAINAGE PIPE - ADS HIGHWAY GRADE WITH TRI-A COUPLER. SUSPEND PIPE DURING BACKFILL OPERATIONS TO PREVENT BUCKLING OR BREAKAGE. DIAMETER AS NOTED.
12. BASE SEAL - GEOTEXTILE OR CONCRETE SLURRY.
13. ROCK - WASHED, SIZED BETWEEN 3/8" AND 1-1/2" TO BEST COMPLEMENT SOIL CONDITIONS.
14. FLOFAS® DRAINAGE SCREEN - SCH. 40 PVC Ø 120" SLOTTED WELL SCREEN WITH 32 SLOTS PER ROW/FT. DIAMETER VARIES 120" OVERALL LENGTH WITH TRI-B COUPLER.
15. MIN. 4" Ø SHAFT - DRILLED TO MAINTAIN PERMEABILITY OF DRAINAGE SOILS.
16. FABRIC SEAL - U.V. RESISTANT GEOTEXTILE - TO BE REMOVED BY CUSTOMER AT PROJECT COMPLETION.
17. ABSORBENT - HYDROPHOBIC PETROCHEMICAL SPONGE, MIN. 128 OZ. CAPACITY.
18. CONNECTOR PIPE - 4" Ø SCH. 40 PVC.
19. ANTI-SIPHON VENT WITH FLOW REGULATOR.
20. INTAKE SCREEN - SCH. 40 PVC Ø 120" MODIFIED SLOTTED WELL SCREEN WITH 32 SLOTS PER ROW/FT. 48" OVERALL LENGTH WITH TRI-C END CAP.
21. FREEBOARD DEPTH VARIES WITH INLET PIPE ELEVATION. INCREASE PRIMARY/SECONDARY SETTLING CHAMBER DEPTHS AS NEEDED TO MAINTAIN ALL INLET PIPE ELEVATIONS ABOVE CONNECTOR PIPE OVERFLOW.
22. EIGHT (8) PERFORATIONS PER FOOT, 2 ROWS MIN.
23. MOISTURE MEMBRANE - 6 MIL. PLASTIC. PLACE SECURELY AGAINST ECCENTRIC CONE AND HOLE SIDEWALL. USED IN LIEU OF SLURRY IN LANDSCAPED AREAS.
24. INLET PIPE (BY OTHERS).

AZ L.L. ROOSTERS & ASSOCIATES INC. ARCHITECTS
24 L.L. 22800, L-42, HAZ.
PO BOX 903330, A-100 L.L. 8504, GPO
U.S. Patent No. 4,823,330 - 1st Invention 1974, 1990, 2004
AZ MAXWELL PLUS

SYMBOL LEGEND

⊗	FOUND CHISELED 'X'	⊗	IRRIGATION BOX	(N)	NORTH
⊙	FOUND COTTON PICKER SPINDLE	⊙	IRRIGATION MANHOLE	(S)	SOUTH
⊕	FOUND BRASS CAP FLUSH	⊕	LIGHT POLE	(E)	EAST
⊖	FOUND BRASS CAP IN HANDHOLE	⊖	LIGHT POLE WMAST	(W)	WEST
⊗	FOUND 'PK' NAIL	⊗	DOUBLE LIGHT POLE WMAST	S, SWR	SANITARY SEWER
⊕	FOUND 1/2" REBAR	⊕	GAS MARKER	W	WATER
•	BOLLARD	⊕	POST	SD	STORM DRAIN
⊕	BORE HOLE	⊕	PVC STUB	RW	REUSE/RECLAIMED WATER
⊕	CABLE TV JUNCTION BOX	⊕	SIGN	IRR	IRRIGATION
⊕	CABLE TV RISER	⊕	IRRIGATION STANDPIPE	G	GAS/GUTTER
⊕	CATCH BASIN	⊕	SEWER SERVICE POINT	FM	FORCE MAIN
⊕	WATER CHECK VALVE	⊕	TELEPHONE RISER	FO	FIBER OPTIC
⊕	DRY WELL	⊕	TRAFFIC SIGNAL	CATV	CABLE TELEVISION
⊕	ELECTRIC JUNCTION BOX	⊕	TRAFFIC SIGNAL WMAST	T	TELEPHONE
⊕	ELECTRIC TRANSFORMER	⊕	TRAFFIC SIGNAL JUNCTION BOX	TS	TRAFFIC SIGNAL
⊕	ELECTRIC METER	⊕	UTILITY POLE		
⊕	ELECTRIC MANHOLE	⊕	UTILITY POLE & LIGHT		
⊕	FIRE HYDRANT	⊕	WELL		
⊕	STORM DRAIN MANHOLE	⊕	WATER SERVICE POINT		
⊕	SEWER MANHOLE	⊕	BARREL CACTUS		
⊕	TELEPHONE MANHOLE	⊕	MESQUITE TREE		
⊕	WATER METER	⊕	OCOTILLO		
⊕	WATER VALVE	⊕	PALM TREE		
⊕	GAS METER	⊕	PALO VERDE TREE		
⊕	GAS VALVE	⊕	PINE TREE		

ABBREVIATIONS

TSD	CITY OF TEMPE STANDARD DETAIL
MAG	MARICOPA ASSOCIATION OF GOVERNMENTS
MSD	MAG STANDARD DETAIL
MSS	MAG STANDARD SPECIFICATION
E	UNDERGROUND ELECTRIC
EX, EXIST	EXISTING
OHE	OVERHEAD ELECTRIC
N	NITROGEN
E.V.	ELECTRIC VAULT
C.B.	CATCH BASIN
E.C.	ELECTRIC CABINET
E.B.	ELECTRIC BOX
G.P.	GAS PANEL
W.S.	WATER SERVICE
I.S.	IRRIGATION STRUCTURE

LINE LEGEND

---	SECTION LINE
---	BOUNDARY LINE
---	RIGHT OF WAY LINE
---	CENTER LINE
---	EASEMENT LINE
---	RAILROAD TRACKS
---	GUARD RAIL LINE
---	CHAIN LINK FENCE
---	EXISTING UTILITIES
---	ABANDONED UTILITIES
---	PROPOSED UTILITIES

HATCH LEGEND

[Hatch]	BUILDING AREA
[Hatch]	CONCRETE AREA
[Hatch]	RIPRAP AREA



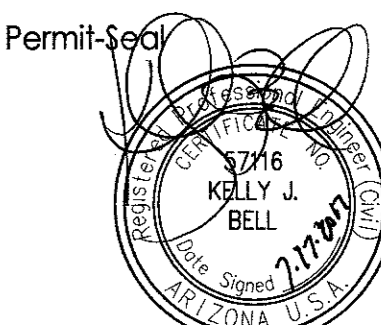
8211 South 48th Street
Phoenix, AZ 85044-5535
www.stantec.com

NOTICE OF EXTENDED CERTIFICATION AND APPROVAL PERIOD PROVISION
THIS CONTRACTOR SHALL VERIFY AND BE RESPONSIBLE FOR ALL DIMENSIONS, DO NOT SCALE
THE CONTRACTOR SHALL VERIFY AND BE RESPONSIBLE FOR ALL DIMENSIONS, DO NOT SCALE
THE CONTRACTOR SHALL VERIFY AND BE RESPONSIBLE FOR ALL DIMENSIONS, DO NOT SCALE
THE CONTRACTOR SHALL VERIFY AND BE RESPONSIBLE FOR ALL DIMENSIONS, DO NOT SCALE

700 W. 1ST STREET

EN170054

DS160372



Project Number:	2220-10676		
File Name:	1100956028m03.dwg		
J/B	AKP	AKP/JJB	17.06.09
Dwn	Chkd.	Dgn.	YY/MM/DD

Drawing No. Revision Sheet