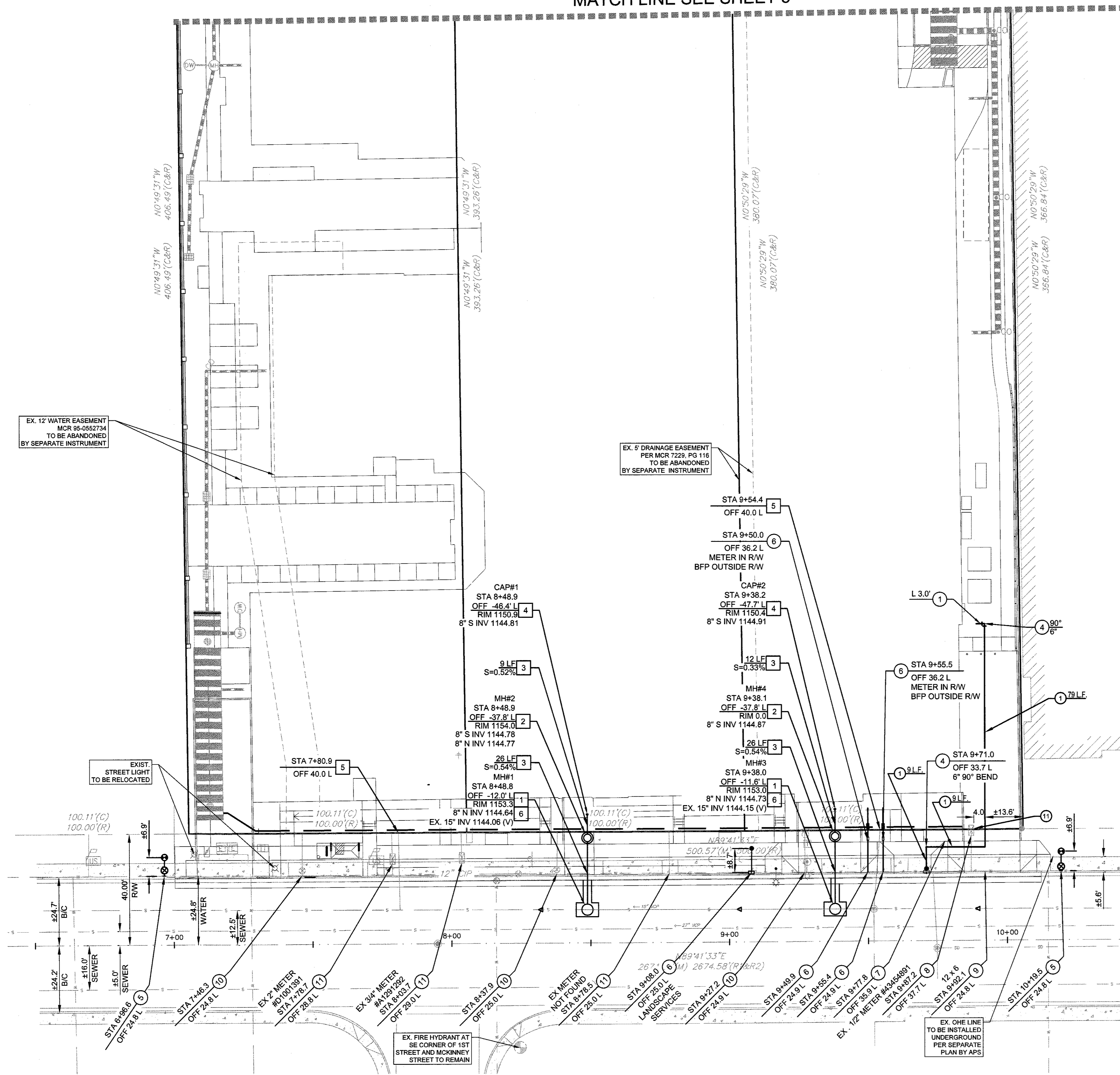


MATCH LINE SEE SHEET 5



NOTES

UTILITY EQUIPMENT BOXES FOR THIS DEVELOPMENT SHALL BE FINISHED IN A NEUTRAL COLOR (SUBJECT TO UTILITY PROVIDER APPROVAL) THAT COMPLIMENTS THE COLORING OF THE BUILDING.

PLACE EXTERIOR, FREESTANDING REDUCED PRESSURE AND DOUBLE CHECK BACKFLOW ASSEMBLIES IN PRE-MANUFACTURED, PRE-FINISHED, LOCKABLE CAGES (ONE ASSEMBLY PER CAGE). IF BACKFLOW PREVENTION OR SIMILAR DEVICE IS FOR A 3" OR GREATER WATER LINE, DELETE CAGE AND PROVIDE A MASONRY OR CONCRETE SCREEN WALL FOLLOWING THE REQUIREMENTS OF STANDARD DETAIL T-214.

WITH EXCEPTION OF WATER SERVICE ON SOUTHEAST CORNER TO BE USED FOR IRRIGATION, ALL EXISTING WATER AND SEWER SERVICES ALONG THIS PROJECT'S FRONTAGE ON 1ST STREET ARE TO BE ABANDONED. SIZES OF EXISTING WATER SERVICES ARE TO BE FIELD VERIFIED.

TBA = TO BE ABANDONED.

STATION CONTROL - FIRST STREET

STATION 1+00: FOUND CITY OF TEMPE BRASS CAP IN HANDHOLE AT CENTER LINE INTERSECTION OF 1ST STREET AND HARDY DRIVE.

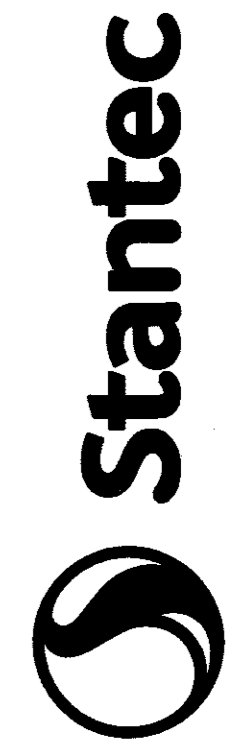
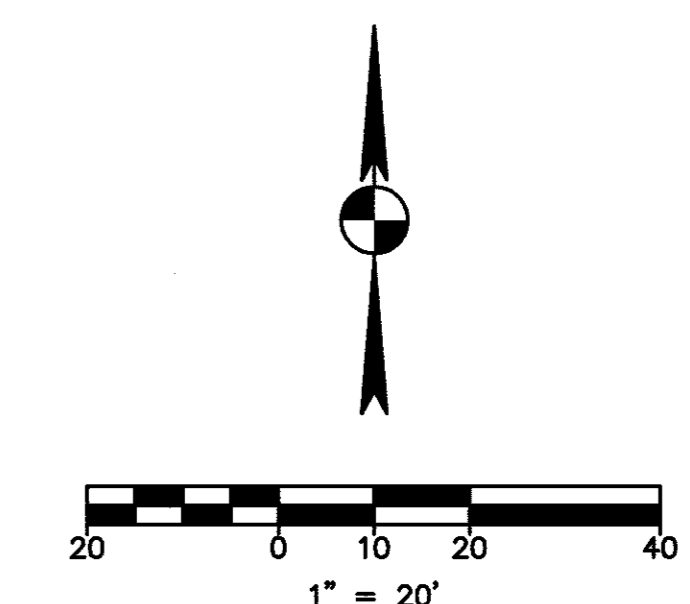
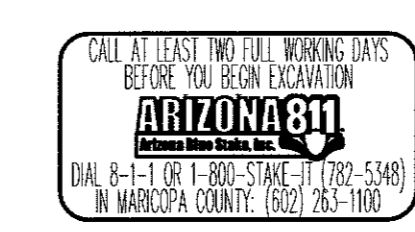
WATER CONSTRUCTION NOTES

- 1) INSTALL DIP (CL350) WATER LINE W/POLY WRAP PER M.A.G. STD. SPEC. 610. SIZE AND LENGTH PER PLAN, MIN 3' COVER. TRENCH, BEDDING AND BACKFILL SHALL COMPLY WITH C.O.T. STD. DTL. T-450.
- 2) INSTALL PVC (C900) WATER LINE. SIZE AND LENGTH PER PLAN, MIN 3' COVER. TRENCH, BEDDING AND BACKFILL SHALL COMPLY WITH C.O.T. STD. DTL. T-450.
- 4) INSTALL BEND, SIZE PER PLAN. RESTRAIN JOINTS PER M.A.G. STD. DTL. 303.
- 6) INSTALL FIRE HYDRANT COMPLETE PER M.A.G. STD. DTL. 360-1
- 8) INSTALL 2" WATER SERVICE AND COMPOUND METER PER C.O.T. STD. DTL. T-212-A. INSTALL BACKFLOW PREVENTOR PER C.O.T. STD. DTL. T-213.
- 7) INSTALL 6" FIRE LINE DETECTOR CHECK VAULT PER M.A.G. STD. DTL. 345-1. MODIFIED FOR DIP (CL350) FIRE LINE FROM MAIN TO VAULT.
- 8) RE-USE/RELOCATE EXISTING WATER METER FOR LANDSCAPE SERVICE. INSTALL BACKFLOW PREVENTOR PER C.O.T. STD. DTL. T-213. SEE IRRIGATION PLANS FOR CONTINUATION.
- 9) INSTALL TAPPING SLEEVE, VALVE, BOX AND COVER PER M.A.G. STD. DTL. 340. SIZE PER PLAN.
- 10) ABANDON EXISTING 6" FIRE LINE. CAP AND PLUG AT MAIN.
- 11) ABANDON EXISTING WATER SERVICES. CAP AND PLUG AT MAIN.

SEWER CONSTRUCTION NOTES

- 1) LOCATE EXISTING SEWER MAIN. CUT IN AND INSTALL NEW 50' MANHOLE PER M.A.G. STD. DTL. 420-1 WITH TYPE 'A' TOP AND 30" FRAME AND COVER PER M.A.G. STD. DTL. 423-2. NO STEPS. ADJUST TO GRADE PER TEMPE STD. DTL. T-446.
- 2) INSTALL NEW 50' MANHOLE PER M.A.G. STD. DTL. 420-1 WITH TYPE 'A' TOP AND 30" FRAME AND COVER PER M.A.G. STD. DTL. 423-2. NO STEPS. ADJUST TO GRADE PER TEMPE STD. DTL. T-446.
- 3) INSTALL 8" EXTRA STRENGTH V.C.P. SEWER SERVICE CONNECTION PER M.A.G. STD. SPEC. 743 AND 615 AND M.A.G. STD. DTL. 440-1. TRENCH/BACKFILL PER TEMPE STD. DTL. T-450.
- 4) INSTALL END CAP WITH END MARKER PER M.A.G. STD. DTL. 440-1.
- 5) PLUG AND ABANDON EX. SEWER LINE PER M.A.G. STD. DTL. 427.
- 6) CONTRACTOR TO VERIFY HORIZONTAL AND VERTICAL LOCATION PRIOR TO ANY TRENCHING.

NOTE TO CONTRACTOR:
 ALL UNDERGROUND CABLE, PIPE, AND CONDUITS SHALL BE DETECTABLE (METALLIC) OR HAVE A DETECTABLE UNDERGROUND LOCATION DEVICE INSTALLED WITH IT. THE RECOMMENDED DETECTABLE UNDERGROUND LOCATION DEVICE IS A #18 OR LARGER AT 8' O.C. IT SHALL HAVE 12" OF TRACER WIRE ACCESSIBLE ABOVE GRADE AT ANY ABOVE GRADE TERMINATION.

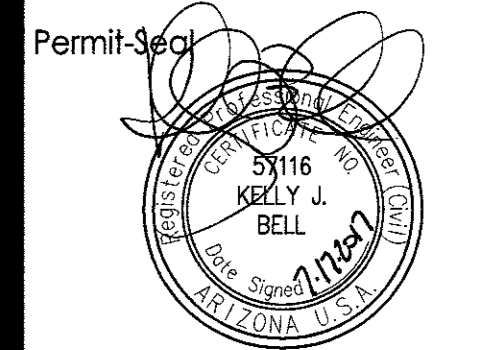


8211 South 48th Street
 Phoenix, AZ 85044-5335
 www.stantec.com

NOTICE OF EXTENDED CERTIFICATION AND APPROVAL PERIOD PROVISION
 THIS CONTRACTOR AGREES TO EXTEND THE PERIOD OF CERTIFICATION AND APPROVAL OF BILLINGS AND ESTIMATES FOR THE CONTRACTOR FOR RELEASE OF RETENTION WITHIN 45 DAYS AFTER THE BILLINGS AND ESTIMATES ARE RECEIVED FROM THE CONTRACTOR AND FOR FINAL PAYMENT WITHIN 45 DAYS AFTER THE BILLINGS AND ESTIMATES ARE RECEIVED FROM THE CONTRACTOR.

NOTICE OF EXTENDED PAYMENT PROVISION
 THIS CONTRACTOR AGREES TO MAKE PAYMENT WITHIN 20 DAYS AFTER CERTIFICATION AND APPROVAL OF BILLINGS AND ESTIMATES FOR PROGRESS PAYMENTS. WITHIN 45 DAYS AFTER CERTIFICATION AND APPROVAL OF BILLINGS AND ESTIMATES FOR RELEASE OF RETENTION AND WITHIN 45 DAYS AFTER CERTIFICATION AND APPROVAL OF BILLINGS AND ESTIMATES FOR FINAL PAYMENT.

Client/Project
 CRESCENT COMMUNITIES
 CRESCENT RIO
 801 WEST 1ST STREET, TEMPE, AZ



Permit Seal
 EXPIRES 03-31-2021
 Project Number: 2220-10676
 File Name: 100956026A05.dwg
 Job: 17.06.09
 Dwn: Chkd: Dsgn: YI/MML/DD
 Drawing No.
 Revision Sheet

700 W. 1ST STREET

EN170054

DS160372