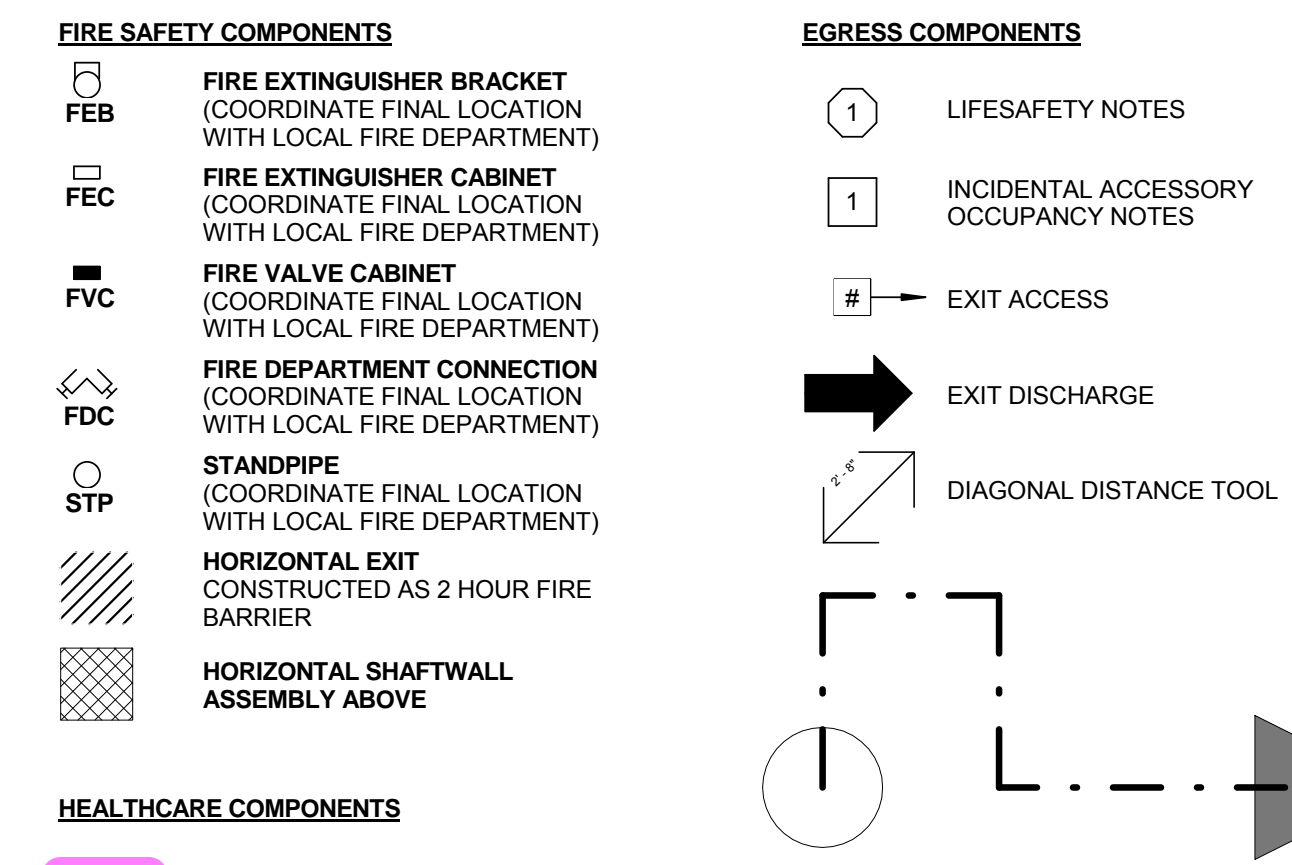
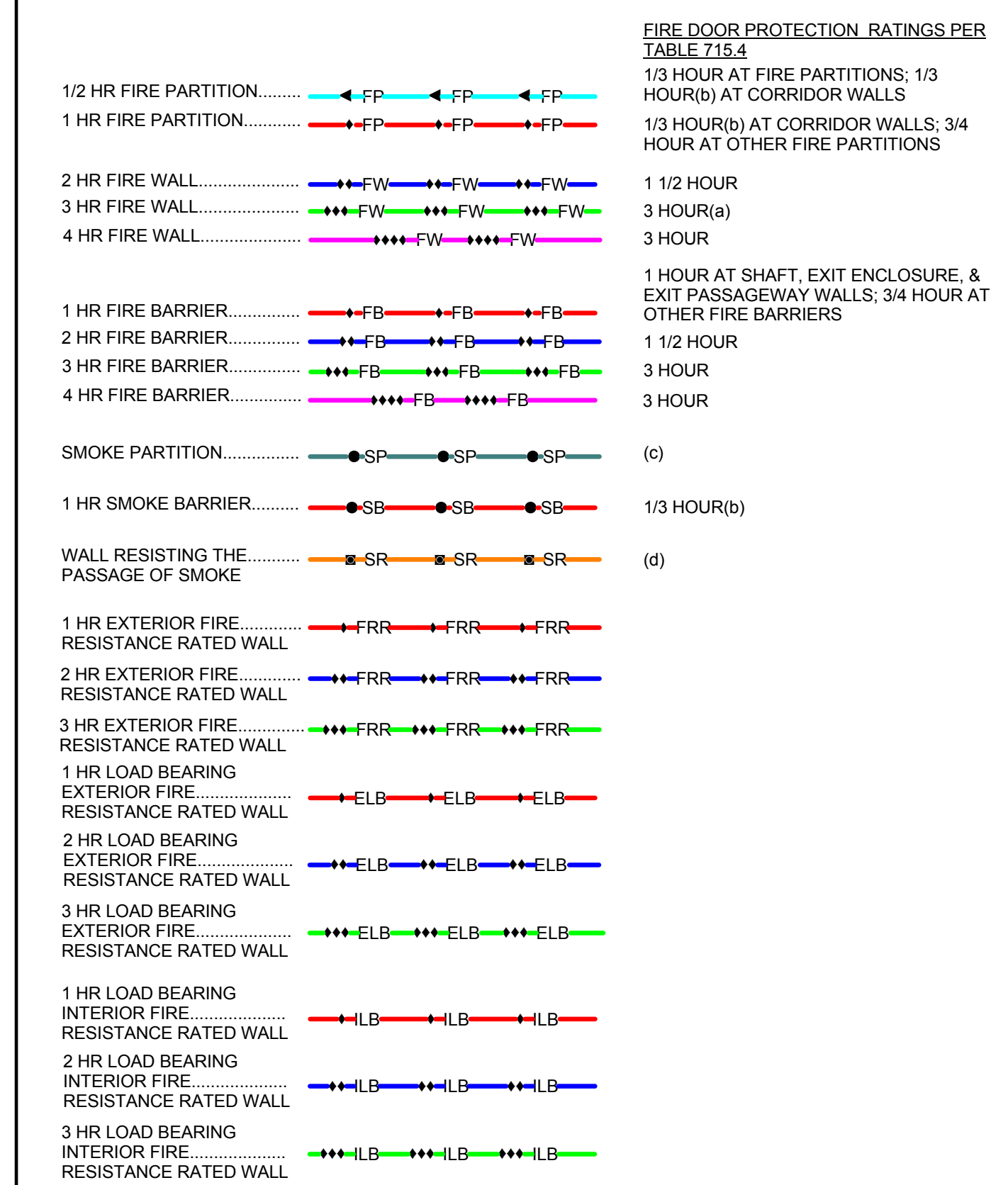


### LIFE SAFETY PLAN LEGEND



### Wall tapes for 1/16th



### LIFESAFETY PLAN - FUNCTION OF USE LEGEND

- ASSEMBLY - UNCONCENTRATED - TABLES AND CHAIRS (IBC)
- BOWLING CENTERS (IBC)
- BUSINESS AREAS (IBC)
- EXERCISE ROOMS (IBC)
- MECHANICAL EQUIPMENT ROOMS (IBC)
- PARKING GARAGES (IBC)
- RESIDENTIAL (IBC)
- SKATING RINKS / SWIMMING POOLS - DECKS (IBC)
- SKATING RINKS / SWIMMING POOLS - RINK AND POOL (IBC)



Consultant

**PROGRESS PRINTS**  
NOT FOR CONSTRUCTION  
6/20/16 2:40:29 PM

Issuance	Date
SCHEMATIC DESIGN	06/02/16

Revisions	Date	No.
-----------	------	-----

OCCUPANCY GROUP	FUNCTION OF SPACE	OCCUPANT LOAD	OCCUPANCY GROUP SF
A-3	ASSEMBLY - UNCONCENTRATED - TABLES AND CHAIRS	568	8,468 SF
A-3	BOWLING CENTERS	5	1,637 SF
B	BUSINESS AREAS	36	3,432 SF
A-3	EXERCISE ROOMS	42	2,081 SF
R-2	MECHANICAL EQUIPMENT ROOMS	5	1,238 SF
S-2	PARKING GARAGES	124	24,787 SF
R-2	RESIDENTIAL	233	46,053 SF
A-3	SKATING RINKS / SWIMMING POOLS - DECKS	285	4,267 SF
A-3	SKATING RINKS / SWIMMING POOLS - RINK AND POOL	15	704 SF
<b>Grand total</b>		<b>1313</b>	<b>92,667 SF</b>

### Project Information

**CRESCENT RIO**  
700 WEST 1ST STREET TEMPE, AZ 85281

### Sheet Information

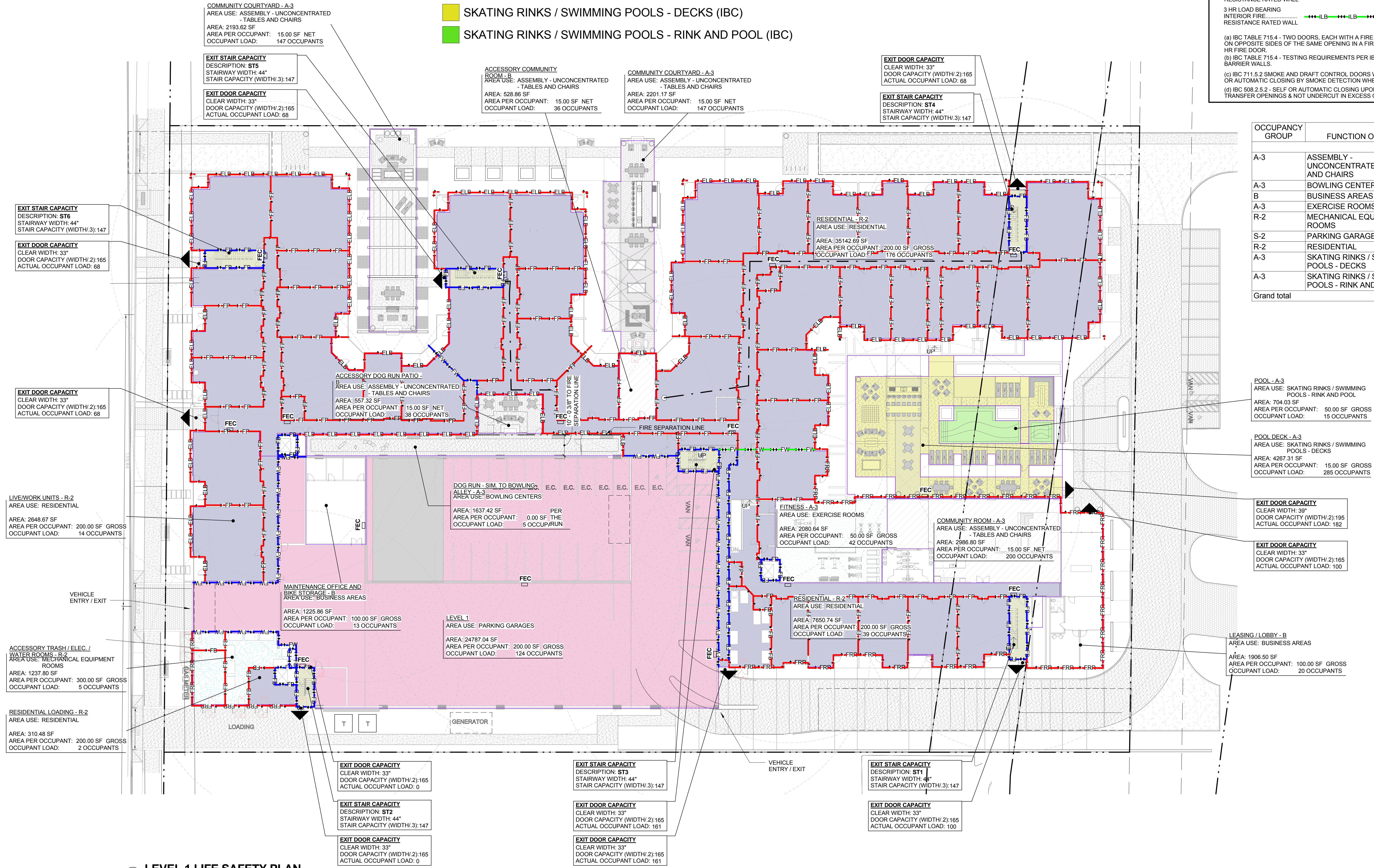
Sheet Title:  
**LIFE SAFETY PLAN - LEVEL ONE**

Sheet Number:  
**LS101**

DPA Project: 16504.00

### LEVEL 1 LIFE SAFETY PLAN

3/64" = 1'-0"



**COMMUNITY COURTYARD - A-3**  
AREA USE: ASSEMBLY - UNCONCENTRATED - TABLES AND CHAIRS  
AREA: 2193.62 SF  
AREA PER OCCUPANT: 15.00 SF NET  
OCCUPANT LOAD: 147 OCCUPANTS

**EXIT STAIR CAPACITY**  
DESCRIPTION: ST5  
STAIRWAY WIDTH: 44"  
STAIR CAPACITY (WIDTH/3): 147

**EXIT DOOR CAPACITY**  
CLEAR WIDTH: 33"  
DOOR CAPACITY (WIDTH/2): 165  
ACTUAL OCCUPANT LOAD: 68

**ACCESSORY COMMUNITY ROOM - B**  
AREA USE: ASSEMBLY - UNCONCENTRATED - TABLES AND CHAIRS  
AREA: 628.86 SF  
AREA PER OCCUPANT: 15.00 SF NET  
OCCUPANT LOAD: 36 OCCUPANTS

**COMMUNITY COURTYARD - A-3**  
AREA USE: ASSEMBLY - UNCONCENTRATED - TABLES AND CHAIRS  
AREA: 2201.17 SF  
AREA PER OCCUPANT: 15.00 SF NET  
OCCUPANT LOAD: 147 OCCUPANTS

**EXIT DOOR CAPACITY**  
CLEAR WIDTH: 33"  
DOOR CAPACITY (WIDTH/2): 165  
ACTUAL OCCUPANT LOAD: 68

**EXIT STAIR CAPACITY**  
DESCRIPTION: ST4  
STAIRWAY WIDTH: 44"  
STAIR CAPACITY (WIDTH/3): 147

**EXIT DOOR CAPACITY**  
CLEAR WIDTH: 33"  
DOOR CAPACITY (WIDTH/2): 165  
ACTUAL OCCUPANT LOAD: 68

**EXIT STAIR CAPACITY**  
DESCRIPTION: ST4  
STAIRWAY WIDTH: 44"  
STAIR CAPACITY (WIDTH/3): 147

**EXIT STAIR CAPACITY**  
DESCRIPTION: ST6  
STAIRWAY WIDTH: 44"  
STAIR CAPACITY (WIDTH/3): 147

**EXIT DOOR CAPACITY**  
CLEAR WIDTH: 33"  
DOOR CAPACITY (WIDTH/2): 165  
ACTUAL OCCUPANT LOAD: 68

**EXIT DOOR CAPACITY**  
CLEAR WIDTH: 33"  
DOOR CAPACITY (WIDTH/2): 165  
ACTUAL OCCUPANT LOAD: 68

**LIVE/WORK UNITS - R-2**  
AREA USE: RESIDENTIAL  
AREA: 2648.67 SF  
AREA PER OCCUPANT: 200.00 SF GROSS  
OCCUPANT LOAD: 14 OCCUPANTS

**VEHICLE ENTRY / EXIT**

**ACCESSORY TRASH / ELEC. / WATER ROOMS - R-2**  
AREA USE: MECHANICAL EQUIPMENT ROOMS  
AREA: 1237.80 SF  
AREA PER OCCUPANT: 300.00 SF GROSS  
OCCUPANT LOAD: 5 OCCUPANTS

**RESIDENTIAL LOADING - R-2**  
AREA USE: RESIDENTIAL  
AREA: 310.48 SF  
AREA PER OCCUPANT: 200.00 SF GROSS  
OCCUPANT LOAD: 2 OCCUPANTS

**ACCESSORY DOG RUN PATIO**  
AREA USE: ASSEMBLY - UNCONCENTRATED - TABLES AND CHAIRS  
AREA: 557.32 SF  
AREA PER OCCUPANT: 15.00 SF NET  
OCCUPANT LOAD: 38 OCCUPANTS

**DOG RUN - SIM TO BOWLING ALLEY - A-3**  
AREA USE: BOWLING CENTERS  
AREA: 1637.42 SF  
AREA PER OCCUPANT: 0.00 SF THE OCCUPANT LOAD: 5 OCCUPANTS/RUN

**FITNESS - A-3**  
AREA USE: EXERCISE ROOMS  
AREA: 2080.64 SF  
AREA PER OCCUPANT: 50.00 SF GROSS  
OCCUPANT LOAD: 42 OCCUPANTS

**COMMUNITY ROOM - A-3**  
AREA USE: ASSEMBLY - UNCONCENTRATED - TABLES AND CHAIRS  
AREA: 2986.80 SF  
AREA PER OCCUPANT: 15.00 SF NET  
OCCUPANT LOAD: 200 OCCUPANTS

**MAINTENANCE OFFICE AND BIKE STORAGE - B**  
AREA USE: BUSINESS AREAS  
AREA: 1225.86 SF  
AREA PER OCCUPANT: 100.00 SF GROSS  
OCCUPANT LOAD: 13 OCCUPANTS

**LEVEL 1**  
AREA USE: PARKING GARAGES  
AREA: 24787.04 SF  
AREA PER OCCUPANT: 200.00 SF GROSS  
OCCUPANT LOAD: 124 OCCUPANTS

**RESIDENTIAL - R-2**  
AREA USE: RESIDENTIAL  
AREA: 7850.74 SF  
AREA PER OCCUPANT: 200.00 SF GROSS  
OCCUPANT LOAD: 39 OCCUPANTS

**POOL - A-3**  
AREA USE: SKATING RINKS / SWIMMING POOLS - RINK AND POOL  
AREA: 704.03 SF  
AREA PER OCCUPANT: 50.00 SF GROSS  
OCCUPANT LOAD: 15 OCCUPANTS

**POOL DECK - A-3**  
AREA USE: SKATING RINKS / SWIMMING POOLS - DECKS  
AREA: 4287.51 SF  
AREA PER OCCUPANT: 15.00 SF GROSS  
OCCUPANT LOAD: 285 OCCUPANTS

**EXIT DOOR CAPACITY**  
CLEAR WIDTH: 39"  
DOOR CAPACITY (WIDTH/2): 195  
ACTUAL OCCUPANT LOAD: 182

**EXIT DOOR CAPACITY**  
CLEAR WIDTH: 33"  
DOOR CAPACITY (WIDTH/2): 165  
ACTUAL OCCUPANT LOAD: 100

**LEASING / LOBBY - B**  
AREA USE: BUSINESS AREAS  
AREA: 1906.50 SF  
AREA PER OCCUPANT: 100.00 SF GROSS  
OCCUPANT LOAD: 20 OCCUPANTS

**EXIT DOOR CAPACITY**  
CLEAR WIDTH: 33"  
DOOR CAPACITY (WIDTH/2): 165  
ACTUAL OCCUPANT LOAD: 0

**EXIT STAIR CAPACITY**  
DESCRIPTION: ST2  
STAIRWAY WIDTH: 44"  
STAIR CAPACITY (WIDTH/3): 147

**EXIT STAIR CAPACITY**  
DESCRIPTION: ST3  
STAIRWAY WIDTH: 44"  
STAIR CAPACITY (WIDTH/3): 147

**EXIT DOOR CAPACITY**  
CLEAR WIDTH: 33"  
DOOR CAPACITY (WIDTH/2): 165  
ACTUAL OCCUPANT LOAD: 161

**EXIT DOOR CAPACITY**  
CLEAR WIDTH: 33"  
DOOR CAPACITY (WIDTH/2): 165  
ACTUAL OCCUPANT LOAD: 161

**EXIT STAIR CAPACITY**  
DESCRIPTION: ST1  
STAIRWAY WIDTH: 44"  
STAIR CAPACITY (WIDTH/3): 147

**EXIT DOOR CAPACITY**  
CLEAR WIDTH: 33"  
DOOR CAPACITY (WIDTH/2): 165  
ACTUAL OCCUPANT LOAD: 100