

DAVIS PARTNERSHIP ARCHITECTS

Denver | 2901 Blake Street, Suite 100
Denver, CO 80205
303.861.8555

Consultant

PROGRESS PRINTS NOT FOR CONSTRUCTION
6/9/2016 2:40:25 PM

Issuance Date

SCHEMATIC DESIGN 06/02/16

Revisions Date No.

Project Information

CRESCENT RIO
700 WEST 1ST STREET TEMPE, AZ 85281

Sheet Information

Sheet Title:

LIFE SAFETY PLAN - LEVEL TWO TO FOUR

Sheet Number:

LS102

DPA Project: 16504.00

Wall tapes for 1/16th

Component	Rating	Notes
1/2 HR FIRE PARTITION	1/2 HR	1/3 HOUR AT FIRE PARTITIONS; 1/3 HOUR @ AT CORRIDOR WALLS
1 HR FIRE PARTITION	1 HR	1/3 HOUR @ AT CORRIDOR WALLS; 3/4 HOUR AT OTHER FIRE PARTITIONS
2 HR FIRE WALL	2 HR	1 1/2 HOUR
3 HR FIRE WALL	3 HR	3 HOUR(a)
4 HR FIRE WALL	4 HR	3 HOUR
1 HR FIRE BARRIER	1 HR	1 HOUR AT SHAFT, EXIT ENCLOSURE, & EXIT PASSAGEWAY WALLS; 3/4 HOUR AT OTHER FIRE BARRIERS
2 HR FIRE BARRIER	2 HR	1 1/2 HOUR
3 HR FIRE BARRIER	3 HR	3 HOUR
4 HR FIRE BARRIER	4 HR	3 HOUR
SMOKE PARTITION	(c)	
1 HR SMOKE BARRIER	1/3 HOUR(b)	
WALL RESISTING THE PASSAGE OF SMOKE	(d)	
1 HR EXTERIOR FIRE RESISTANCE RATED WALL	FRR	
2 HR EXTERIOR FIRE RESISTANCE RATED WALL	FRR	
3 HR EXTERIOR FIRE RESISTANCE RATED WALL	FRR	
1 HR LOAD BEARING EXTERIOR FIRE RESISTANCE RATED WALL	ELB	
2 HR LOAD BEARING EXTERIOR FIRE RESISTANCE RATED WALL	ELB	
3 HR LOAD BEARING EXTERIOR FIRE RESISTANCE RATED WALL	ELB	
1 HR LOAD BEARING INTERIOR FIRE RESISTANCE RATED WALL	ILB	
2 HR LOAD BEARING INTERIOR FIRE RESISTANCE RATED WALL	ILB	
3 HR LOAD BEARING INTERIOR FIRE RESISTANCE RATED WALL	ILB	

(a) IBC TABLE 715.4 - TWO DOORS, EACH WITH A FIRE PROTECTION RATING OF 1-1/2 HOURS, INSTALLED ON OPPOSITE SIDES OF THE SAME OPENING IN A FIRE WALL, SHALL BE DEEMED EQUIVALENT TO ONE 3 HR FIRE DOOR.
(b) IBC TABLE 715.4 - TESTING REQUIREMENTS PER IBC 715.4.3 FOR CORRIDOR AND SMOKE BARRIER WALLS.
(c) IBC 711.5.2 SMOKE AND DRAFT CONTROL DOORS WHERE REQUIRED BY CODE. IBC 711.5.3 SELF OR AUTOMATIC CLOSING BY SMOKE DETECTION WHERE REQUIRED BY CODE.
(d) IBC 508.2.5.2 - SELF OR AUTOMATIC CLOSING UPON DETECTION OF SMOKE PER 715.4.8.3; NO TRANSFER OPENINGS & NOT UNDERCUT IN EXCESS OF NFPA 92.

LIFE SAFETY PLAN LEGEND

FIRE SAFETY COMPONENTS

- FEB FIRE EXTINGUISHER BRACKET (COORDINATE FINAL LOCATION WITH LOCAL FIRE DEPARTMENT)
- FEC FIRE EXTINGUISHER CABINET (COORDINATE FINAL LOCATION WITH LOCAL FIRE DEPARTMENT)
- FVC FIRE VALVE CABINET (COORDINATE FINAL LOCATION WITH LOCAL FIRE DEPARTMENT)
- FDC FIRE DEPARTMENT CONNECTION (COORDINATE FINAL LOCATION WITH LOCAL FIRE DEPARTMENT)
- STP STANDPIPE (COORDINATE FINAL LOCATION WITH LOCAL FIRE DEPARTMENT)
- HORIZONTAL EXIT CONSTRUCTED AS 2 HOUR FIRE BARRIER
- HORIZONTAL SHAFTWALL ASSEMBLY ABOVE

HEALTHCARE COMPONENTS

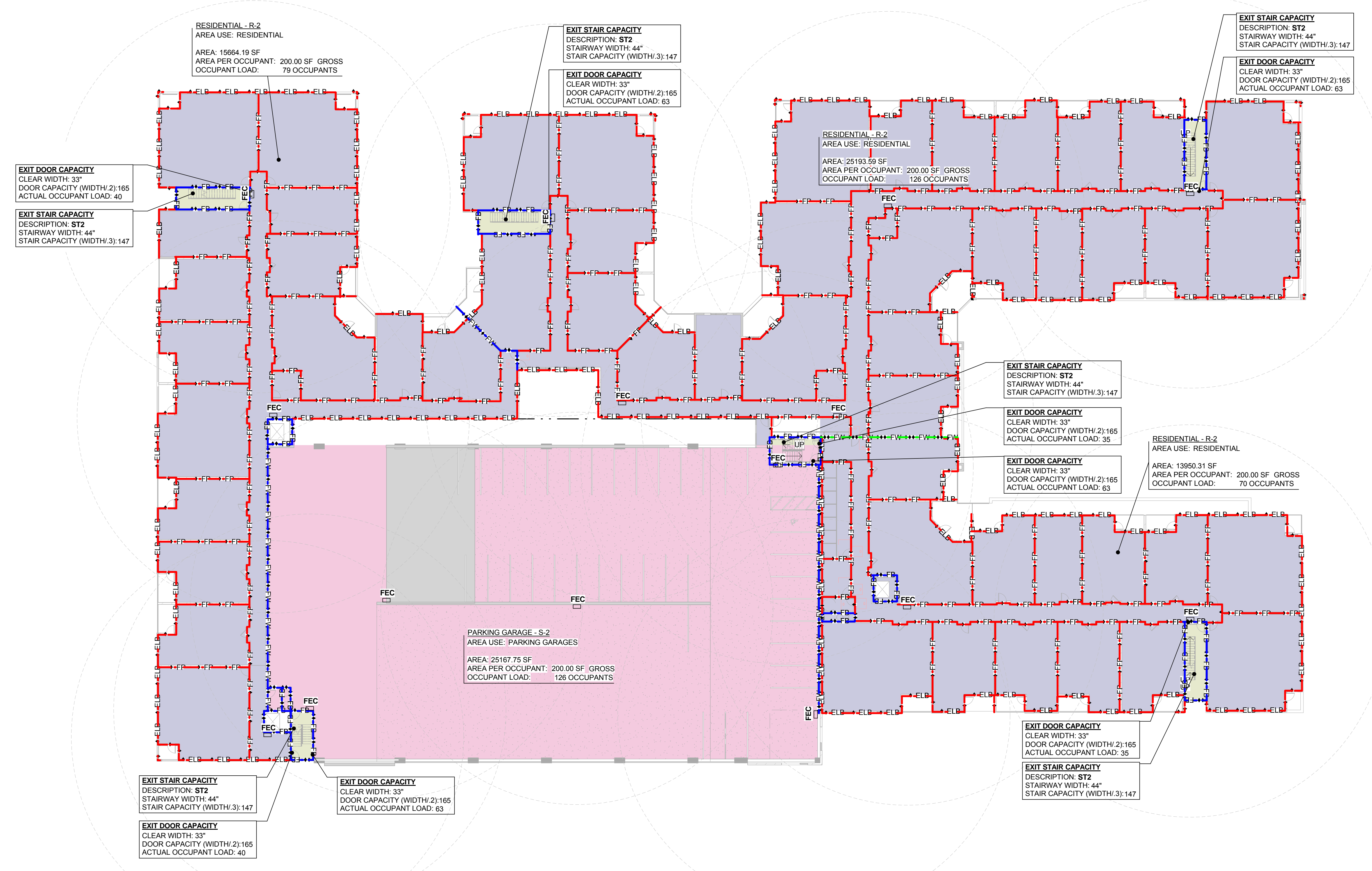
- SMOKE COMPARTMENT
- SUITE
- 8'-0" CORRIDOR REQUIRED HEALTHCARE
- 6'-0" CORRIDOR ADJUNCT AREAS

EGRESS COMPONENTS

- LIFESAFETY NOTES
- INCIDENTAL ACCESSORY OCCUPANCY NOTES
- EXIT ACCESS
- EXIT DISCHARGE
- DIAGONAL DISTANCE TOOL

LIFESAFETY PLAN - FUNCTION OF USE LEGEND

- PARKING GARAGES (IBC)
- RESIDENTIAL (IBC)



1 LEVELS 2-4 LIFE SAFETY PLAN
3/16" = 1'-0"