

11/04/2019

NOVEL TURTLE CREEK

4251 IRVING AVENUE
DALLAS, TEXAS

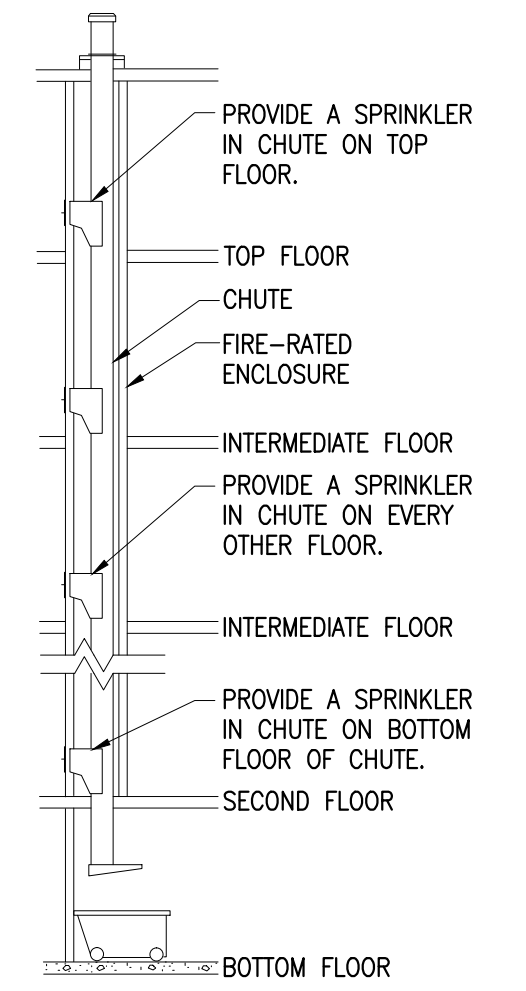


No	Description	Date
	FOR PERMIT	11/04/19

WDG Architecture Project No:
DA18030

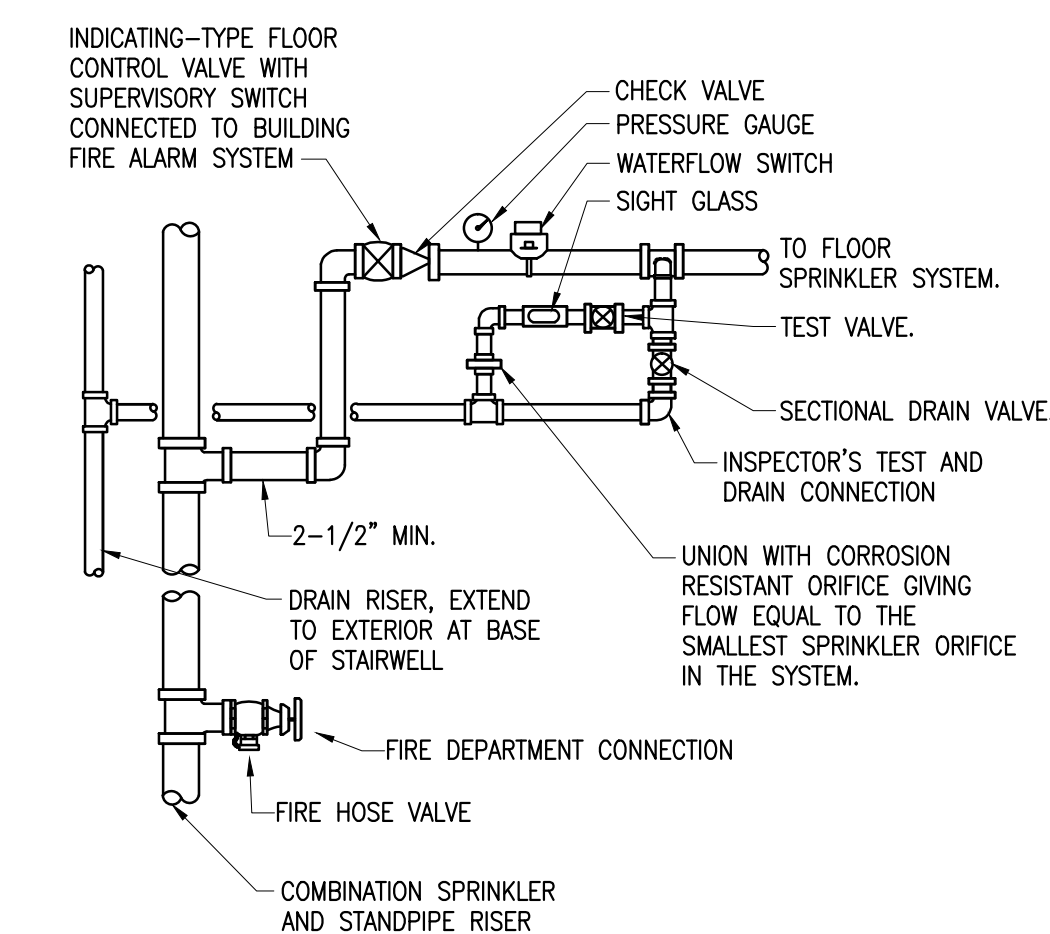
FIRE PROTECTION

FP0.02



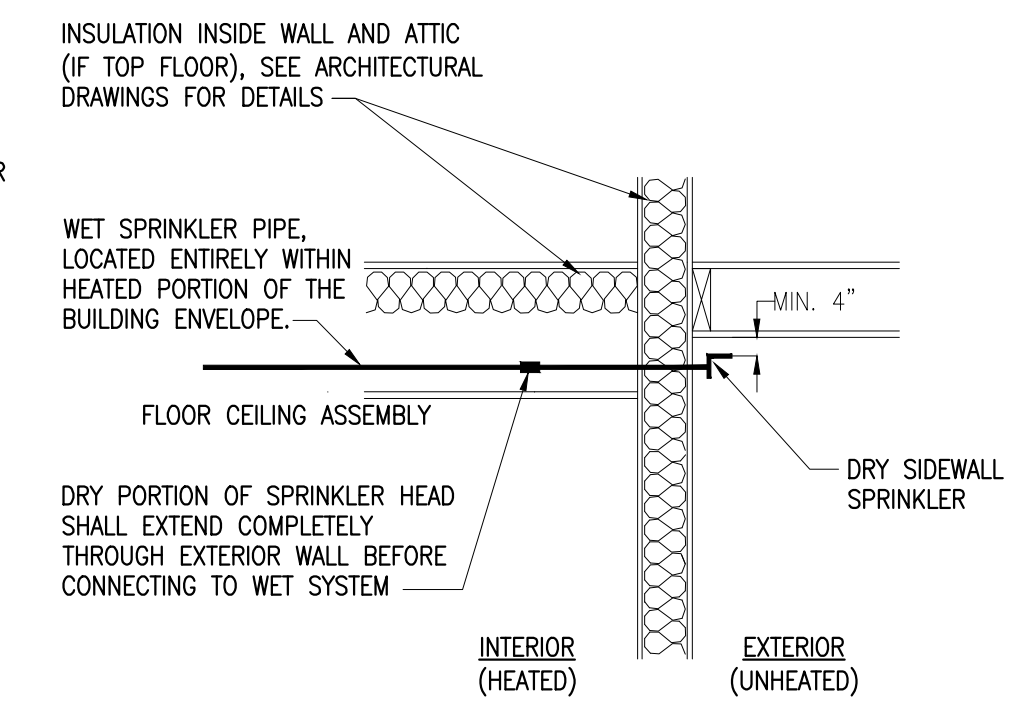
PROVIDE SPRINKLER PROTECTION IN ALL GRAVITY CHUTES (TRASH CHUTES, LAUNDRY CHUTES, ETC.) PER THE REQUIREMENTS OF NFPA 13 AND NFPA 82. SPRINKLERS SHALL BE LOCATED ABOVE THE TOP CHUTE OPENING, AT ALTERNATING FLOOR INTERVALS, AND AT THE LOWEST CHUTE OPENING. ALL SPRINKLER HEADS LOCATED IN THE CHUTE SHALL BE RECESSED AWAY FROM THE PATH THROUGH WHICH THE MATERIAL TRAVELS THROUGH THE CHUTE.

4 CHUTE FIRE PROTECTION DETAIL
NO SCALE



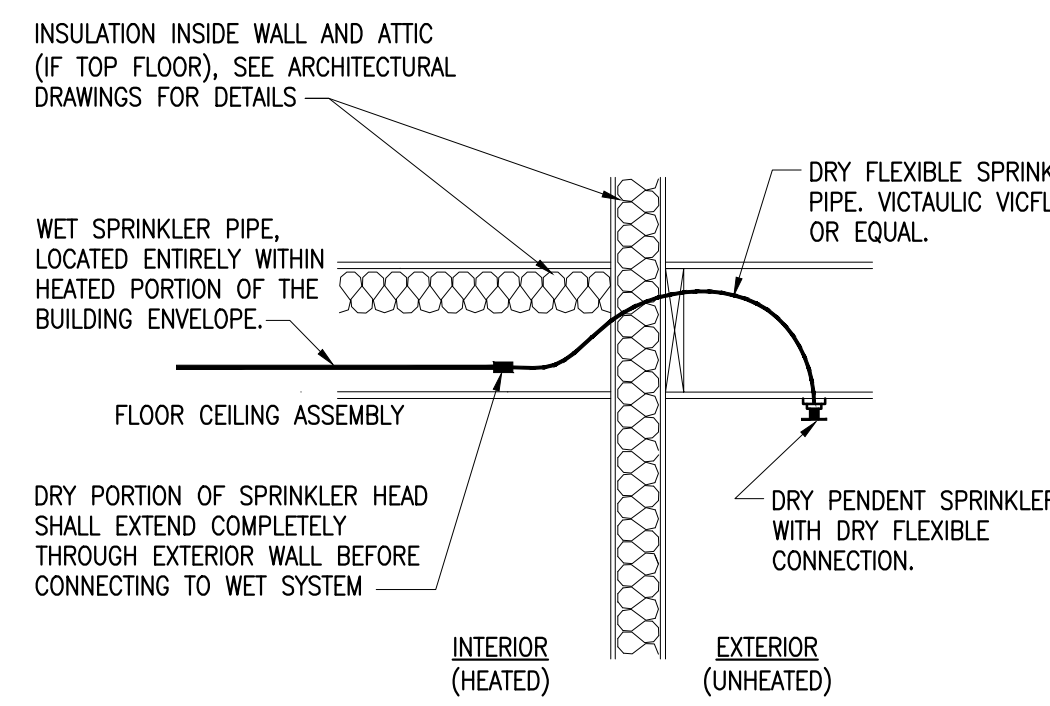
ALL VALVES AND PIPING TYPICAL FOR ALL FLOORS. PROVIDE CANE DETECTION BELOW ALL PROTRUDING FIRE PROTECTION PIPING AND EQUIPMENT PER ANSI REQUIREMENTS. CANE DETECTION SHALL BE MINIMUM OF 2' ABOVE THE FINISHED FLOOR.

3 COMBINATION STANDPIPE
NO SCALE



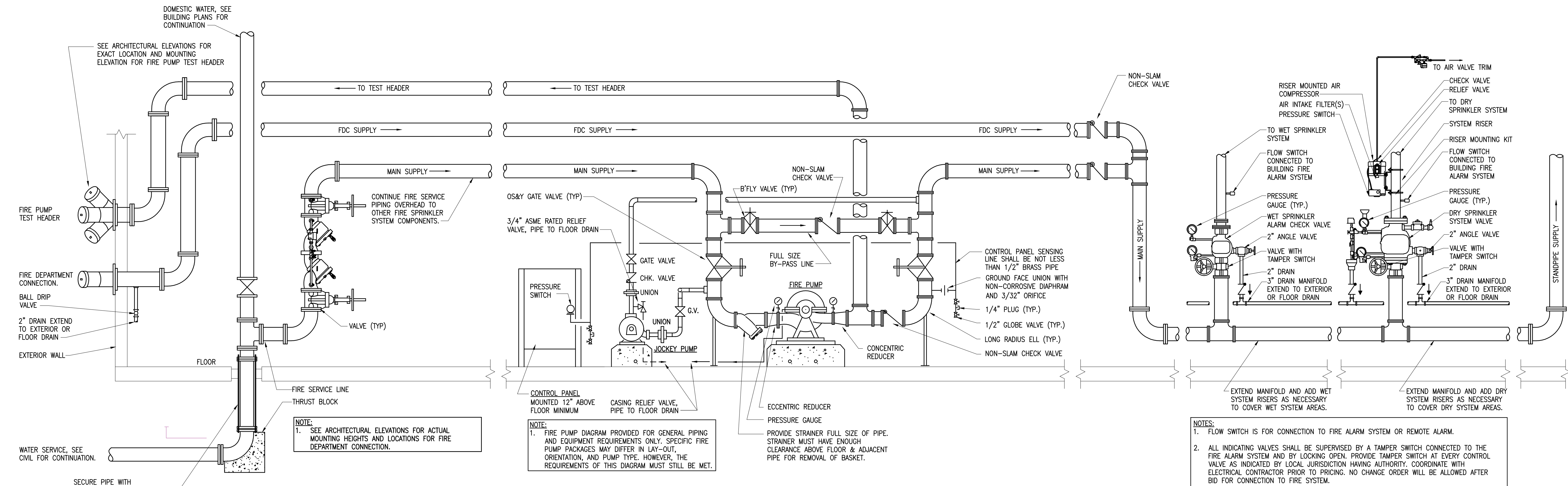
NOTES:
1. FOLLOW ALL MANUFACTURER'S INSTRUCTIONS REGARDING INSTALLATION AND INSULATION OF DRY SPRINKLER HEAD AND ASSOCIATED PIPING.
2. INSULATION ABOVE WET SPRINKLER PIPE IS NOT REQUIRED WHERE A HEATED BUILDING AREA IS LOCATED ON THE FLOOR ABOVE.

2 EXTERIOR OVERHANG SPRINKLER DETAIL
NO SCALE



NOTES:
1. FOLLOW ALL MANUFACTURER'S INSTRUCTIONS REGARDING INSTALLATION AND INSULATION OF DRY SPRINKLER HEAD AND ASSOCIATED PIPING.
2. INSULATION ABOVE WET SPRINKLER PIPE IS NOT REQUIRED WHERE A HEATED BUILDING AREA IS LOCATED ON THE FLOOR ABOVE.

1 EXTERIOR OVERHANG SPRINKLER DETAIL
NO SCALE



5 FIRE PROTECTION SERVICE ENTRANCE
NO SCALE

6 FIRE PUMP PIPING DIAGRAM
NO SCALE

7 WET SPRINKLER RISER
NO SCALE

8 DRY SPRINKLER RISER
NO SCALE

NOTES:
1. FLOW SWITCH IS FOR CONNECTION TO FIRE ALARM SYSTEM OR REMOTE ALARM.
2. ALL INDICATING VALVES SHALL BE SUPERVISED BY A TAMPER SWITCH CONNECTED TO THE FIRE ALARM SYSTEM AND BY LOCKING OPEN. PROVIDE TAMPER SWITCH AT EVERY CONTROL VALVE AS INDICATED BY LOCAL JURISDICTION HAVING AUTHORITY. COORDINATE WITH ELECTRICAL CONTRACTOR PRIOR TO PRICING. NO CHANGE ORDER WILL BE ALLOWED AFTER BID FOR CONNECTION TO FIRE SYSTEM.

Phillips Gradick Engineering, P.C.
500 Sugar Mill Rd
Building A, Suite 105
Atlanta, GA 30350
Telephone: 770.850.9061
Fax: 770.642.2410
www.pgeeng.net
PGE Project # 219016