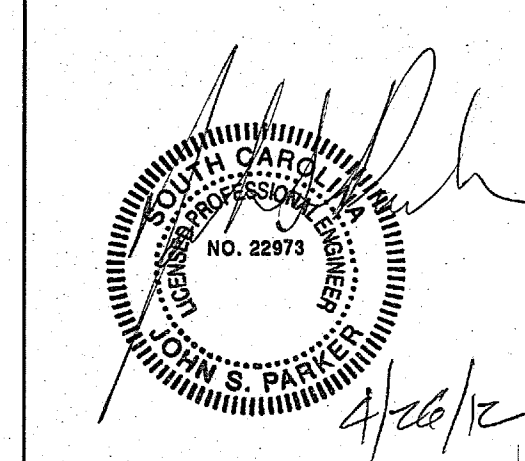


NOTE: THIS DOCUMENT MAY HAVE BEEN ELECTRONICALLY TRANSMITTED. IF UNSIGNED, IT CANNOT BE FILED FOR PUBLIC RECORD. PUBLIC RECORD FILINGS REQUIRE SIGNED AND SEALED DOCUMENTS.



HARRIS TEETER #149  
 NORTHWOOD SQUARE  
 ROCK HILL, SC

PROJECT MANAGER  
 Kasey Shroyer  
 15-11148-02  
 DR. BY: K.S.P.

REVISIONS	Date

DRAWING NAME  
**PLUMBING GAS PLAN**

GAS LOAD (CFH)	
EQUIPMENT	LOAD (CFH)
EXISTING LOAD	2658
NEW RTU-6	40
NEW TOTAL LOAD	2698

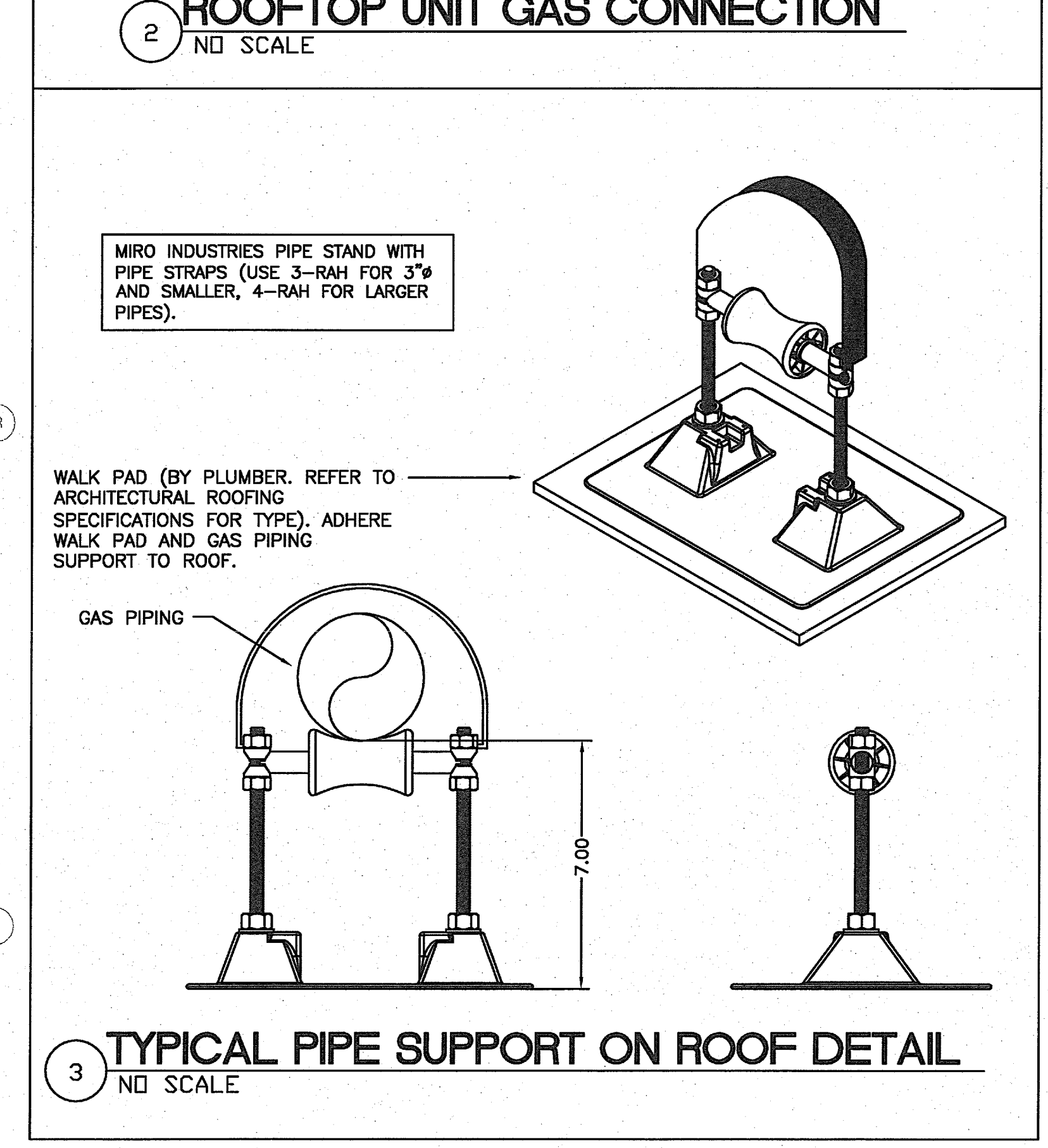
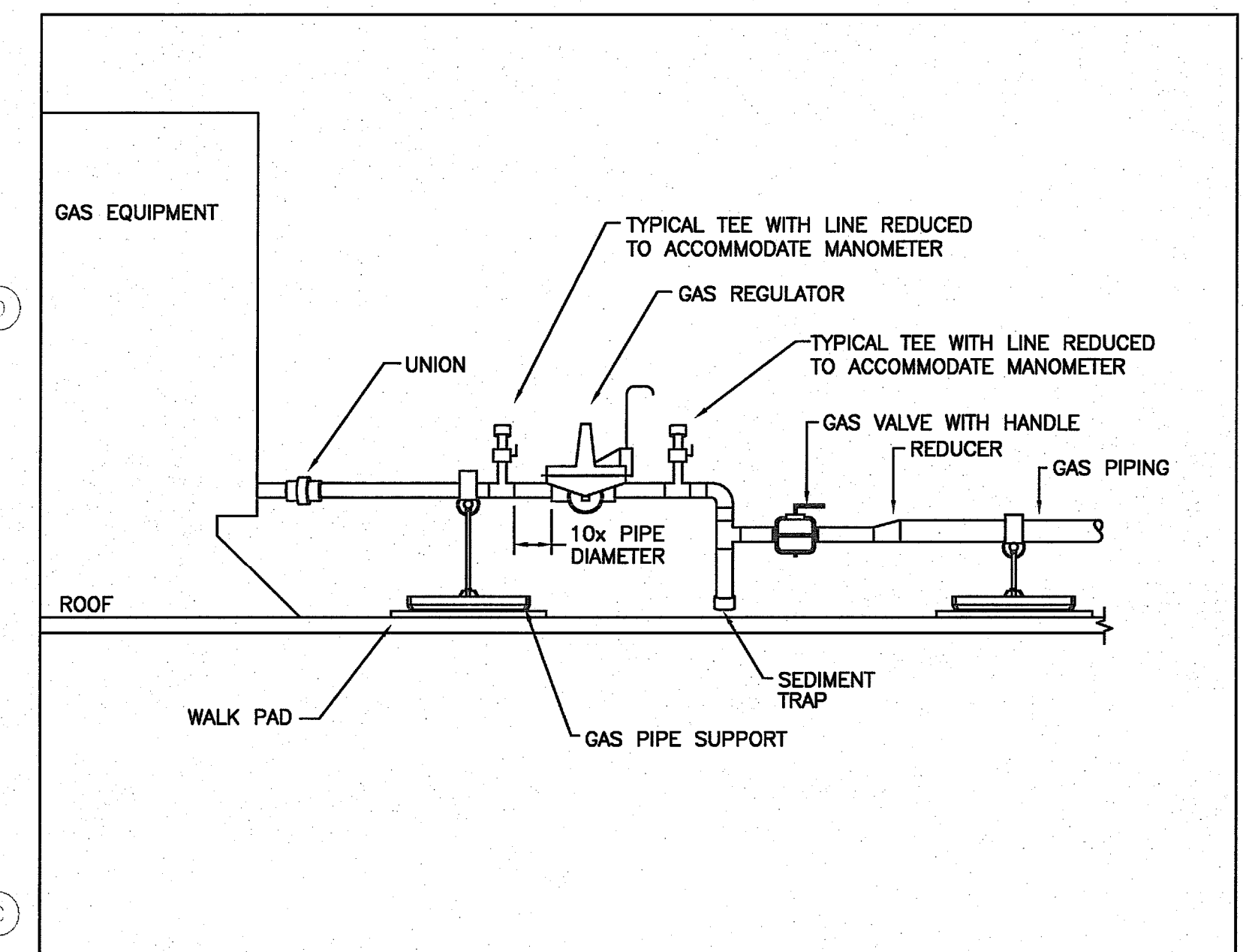
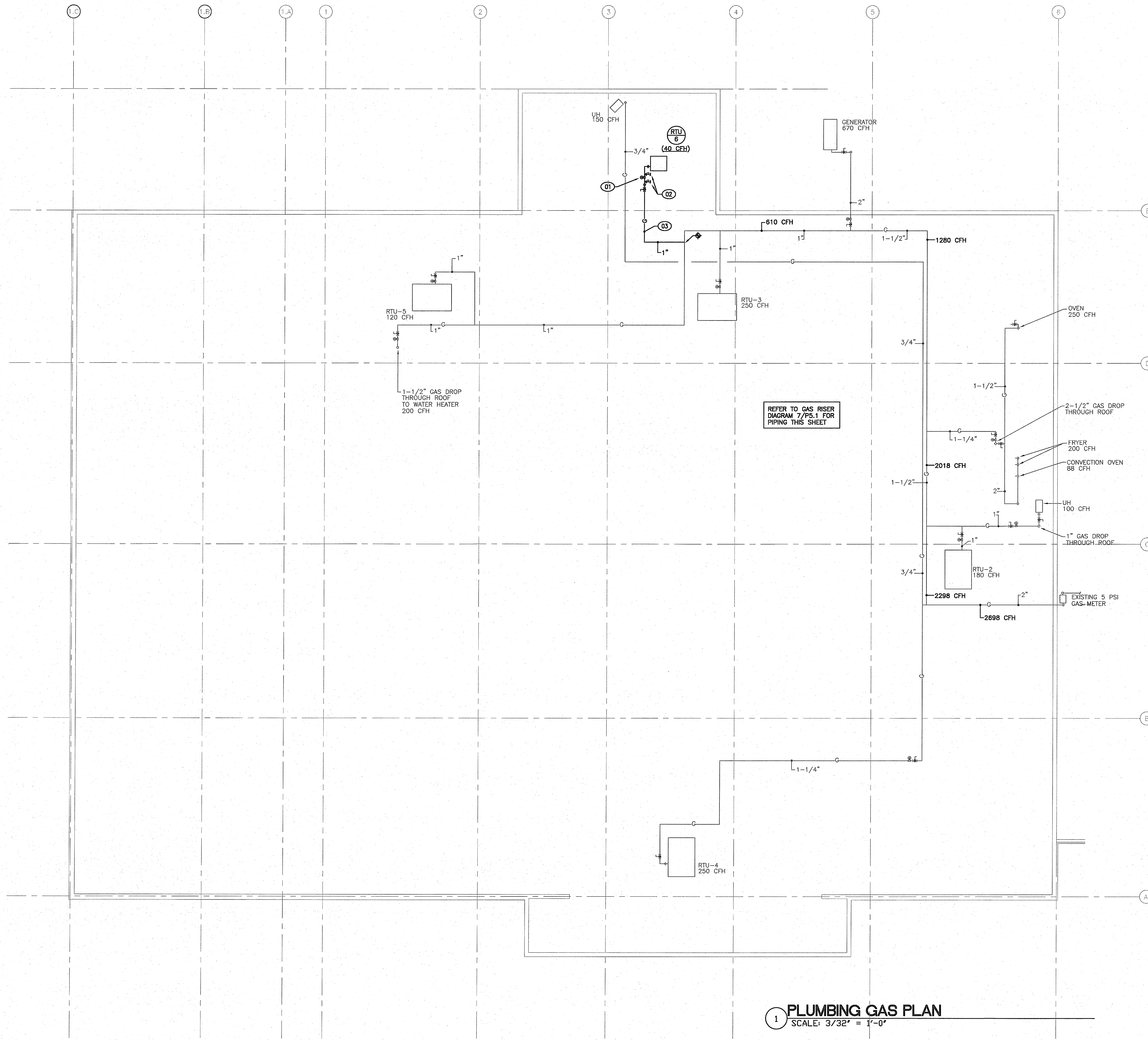
EXISTING 5 PSI SYSTEM AT 300' E.L. BASED ON 3.5 PSI PRESSURE DROP (BASED ON TABLE 402.4(5) OF THE 2008 INTERNATIONAL FUEL GAS CODE)

**KEYED NOTES**

- SENSUS APPLIANCE REGULATOR SET AT 8" W.C. FOR CFH NOTED. PROVIDE -IRV (OVERPRESSURE PROTECTION DEVICE). PIPE RELIEF UP WITH RETURN BEND ON END OF DISCHARGE.
- PROVIDE TEE WITH LINE REDUCED TO ACCOMMODATE MANOMETER CONNECTION WITH VALVE PRIOR TO CAP.
- GAS PIPING ON ROOF SUPPORTED WITH MIRO INDUSTRIES BLOCKS AT 8'-0" ON CENTER. REFER TO DETAIL 3/P4.1

**GENERAL NOTES**

- ALL GAS CONNECTIONS TO EQUIPMENT SHALL HAVE UNIONS, SEDIMENT TRAPS, AND GAS COCKS. (REFER TO TYPICAL DETAIL 2/P4.1).
- PROVIDE TEES, VALVES, AND CAP AT MAIN SUPPLY RISERS TO STORE AND AT DISCHARGE OF EACH REGULATOR FOR MANOMETER CONNECTIONS TO VERIFY WATER COLUMN.
- PAINT ALL EXPOSED PIPING WITH HIGH GLOSS YELLOW AND LABEL PIPING "STORE SUPPLY" WITH A NON-FLUORESCENT PAINT. EACH SYSTEM SHALL HAVE ITS OWN GAS VALVE FOR ISOLATION PURPOSES. (REFER TO ARCHITECTURAL DRAWINGS AND SPECIFICATION FOR ADDITIONAL REQUIREMENTS).
- PROVIDE PIPING EQUIPMENT AND MATERIALS IN ACCORDANCE WITH APPLICABLE PLUMBING CODE REGULATIONS AND STANDARDS, AUTHORITIES HAVING JURISDICTION, AND AS OTHERWISE RECOMMENDED OR DIRECTED BY MANUFACTURER'S.
- COORDINATE ALL FIXTURES, EQUIPMENT, PIPE ROUGH-IN CONNECTION LOCATIONS WITH ARCHITECTURAL DRAWINGS, OWNER AND FURNISHER OF EQUIPMENT PRIOR TO INSTALLATION.
- PIPE DISCHARGE FROM REGULATOR A MINIMUM OF 10' AWAY FROM FRESH AIR INTAKE WITH RETURN BEND ON DISCHARGE.
- PIPE RELIEF FROM REGULATOR A MINIMUM OF 10' AWAY FROM SPARK IGNITION.
- ADHERE GAS PIPING WALK PAD AND GAS PIPING SUPPORT TO ROOF



**1 PLUMBING GAS PLAN**  
 SCALE: 3/32" = 1'-0"