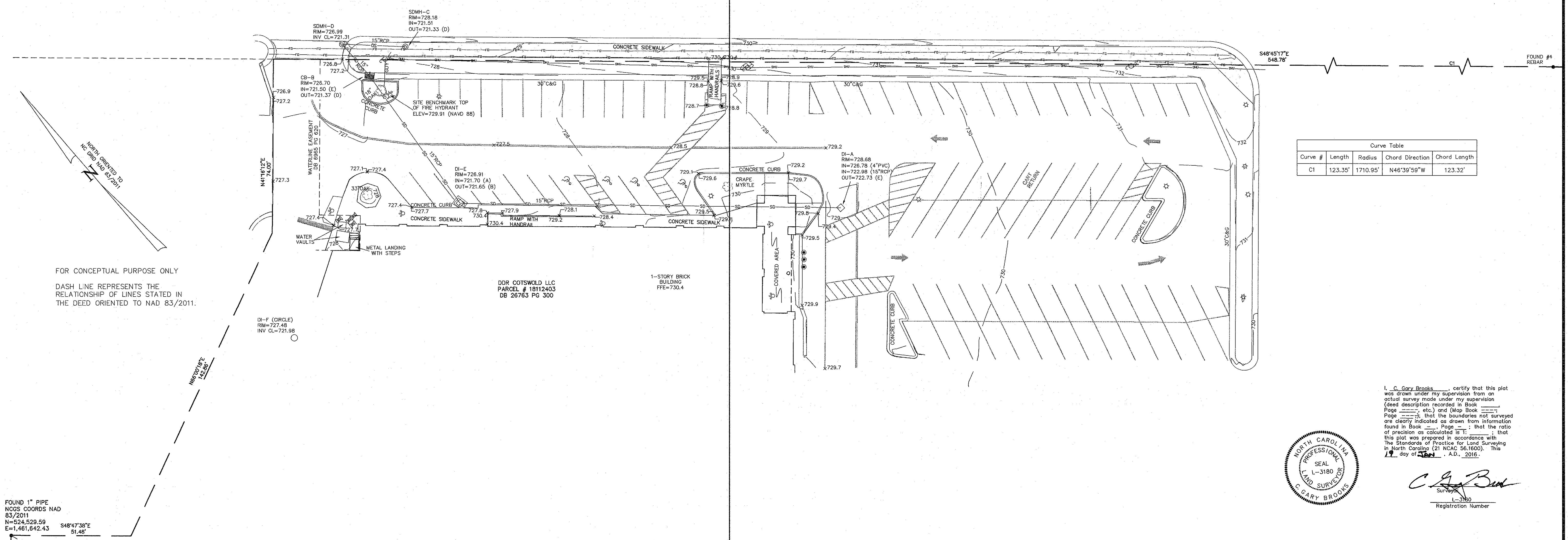
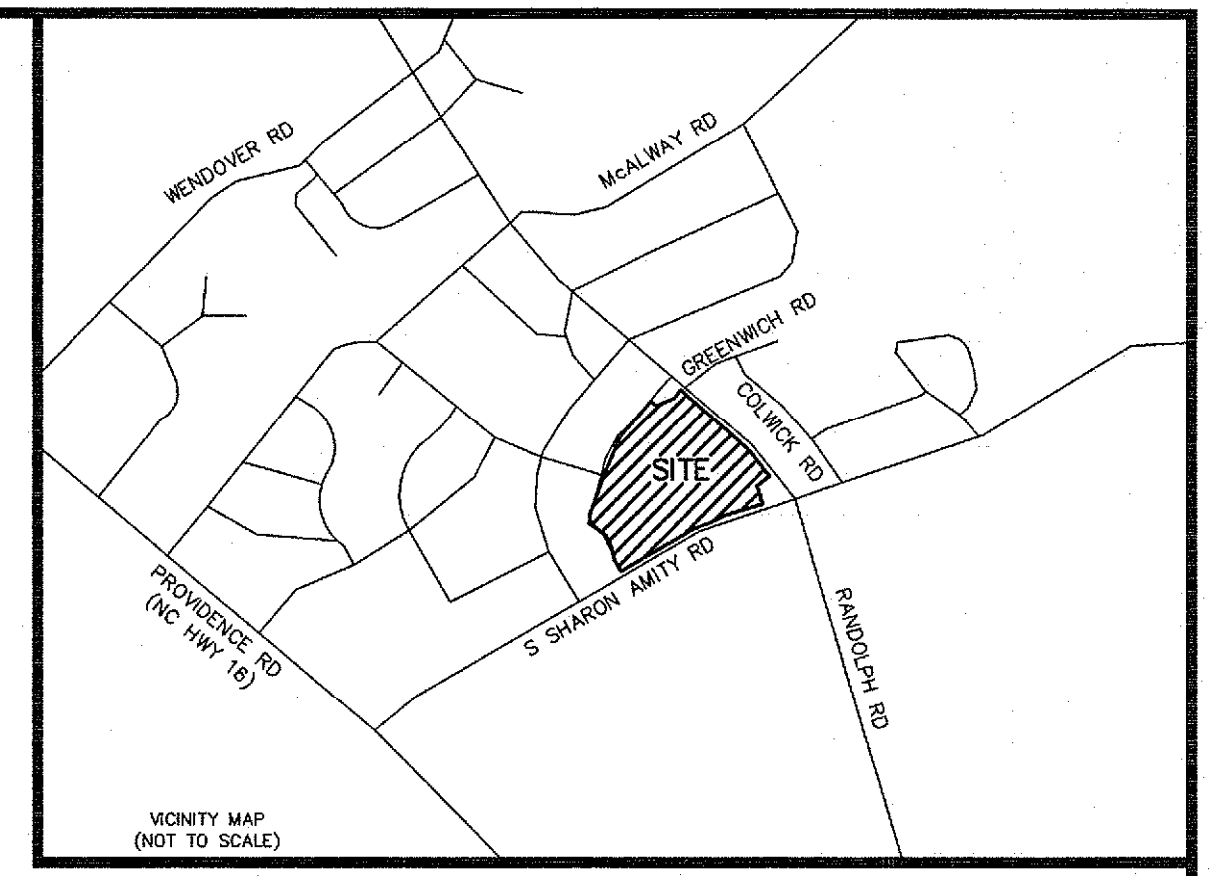


NOTES:
 THE PROPERTY MAY BE SUBJECT TO ANY EASEMENTS AND/OR RIGHTS-OF-WAY.
 THE GRAPHIC REPRESENTATION OF THE UNDERGROUND UTILITIES SHOWN ON THIS PLAT ARE APPROXIMATE. THE LOCATIONS SHOWN ON THIS PLAT WERE ESTABLISHED BY THE FIELD LOCATION OF MARKINGS REPRESENTING UNDERGROUND UTILITIES BY OTHERS OR OBTAINING INFORMATION SHOWING APPROXIMATE LOCATION.

- | LEGEND | |
|---------------------------------------|--|
| EP = EDGE OF PAVEMENT | — = STREET SIGN |
| DIA = DIAMETER | — = BUS STOP SIGN |
| SW = SIDE WALK | — = UTILITY POLE |
| UC = BACK OF CURB | — = UTILITY POLE |
| C&G = CURB AND GUTTER | — = CURB BENCHMARK |
| R/W = RIGHT OF WAY | — = CURB INLET |
| DB = DEED BOOK | — = TRAFFIC SIGNAL BOX |
| PB = PLAT BOOK | — = LIGHT POLE |
| PG = PAGE | — = HANDICAP PARKING |
| DIP = DUCTILE IRON PIPE | — = NCGS MONUMENT |
| NCGS = NORTH CAROLINA GEODESIC SURVEY | — = CABLE PEDESTAL |
| NAVD = NORTH AMERICAN VERTICAL DATUM | — = ELECTRIC PEDESTAL |
| CF = COMBINED GRID FACTOR | — = TELEPHONE PEDESTAL |
| FES = FLARED END SECTION | — = FIBER OPTIC PEDESTAL |
| FDC = FIRE DEPARTMENT CONNECTION | — = SANITARY SEWER MANHOLE |
| SDMH = STORM DRAINAGE MANHOLE | — = WATER VALVE |
| SSMH = SANITARY SEWER MANHOLE | — = STORM DRAIN MANHOLE |
| RCR = REINFORCED CONCRETE PIPE | — = WATER METER |
| DI = DROP INLET | — = FIRE HYDRANT |
| CS = CURB INLET | — = GAS VALVE |
| GT = GREASE TRAP | — = FIRE DEPARTMENT CONNECTION |
| PVC = POLYVINYL CHLORIDE PIPE | — = SEWER CLEAN OUT |
| HDPE = HIGH-DENSITY POLYETHYLENE PIPE | — = MONITORING WELL |
| CMP = CORRUGATED METAL PIPE | — = ROOF DRAIN |
| INV = INVERT | — = GAS METER |
| QM = GAS METER | |
| | — = UNDERGROUND GAS |
| | — = UNDERGROUND CABLE |
| | — = UNDERGROUND ELECTRIC |
| | — = UNDERGROUND FIBER OPTIC |
| | — = OVERHEAD UTILITY LINE |
| | — = WATER LINE |
| | — = FENCE |
| | — = TREE LINE |
| | — = STORM DRAINAGE LINE |
| | — = SEWER LINE |
| | — = GUARD RAIL |
| | — = CENTER LINE |
| | — = LANDSCAPE TREE |
| | — = TREE |
| | — = SHRUB |
| | — = CONCRETE |
| | — = FLAG POLE |
| | — = COMMUNICATION MANHOLE |
| | — = DIRECTION OF FLOW |
| | — = WELL |
| | — = CARBONITE UNDERGROUND FIBER OPTIC CABLE POST |
| | — = MAILBOX |



Curve Table				
Curve #	Length	Radius	Chord Direction	Chord Length
C1	123.35'	1710.95'	N46°39'59"W	123.32'

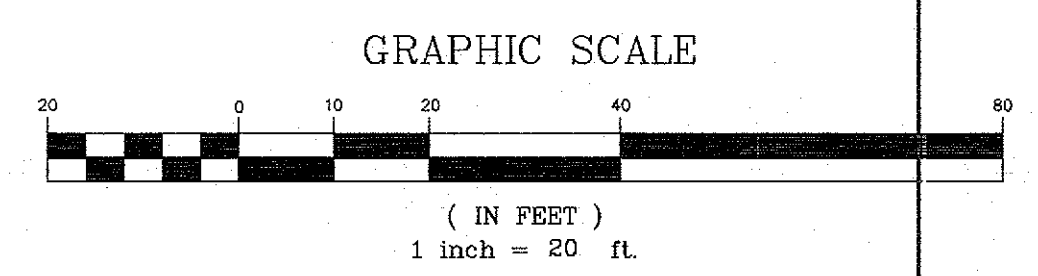
I, C. Gary Brooks, certify that this plat was drawn under my supervision from an actual survey made under my supervision (deed description recorded in Book _____, Page _____, etc.) and (Map Book _____, Page _____), that the boundaries not surveyed are clearly indicated as drawn from information found in Book _____, Page _____; that the ratio of precision as calculated is 1:_____; that this plat was prepared in accordance with the Standards of Practice for Land Surveying in North Carolina (21 NCAC 56.1600). This 19 day of _____, A.D., 2016.



C. Gary Brooks
 Surveyor
 L-3180
 Registration Number

FOUND 1" PIPE
 NCGS COORDS NAD 83/2011
 N=524,529.59
 E=1,461,642.43
 S48°47'38"E
 51.46'

NCGS MONUMENT "M 073"
 NAD 83/2011 (PUBLISHED)
 N=523,627.02
 E=1,461,944.93
 CF=0.99984403



FLOOD CERTIFICATE
 I CERTIFY THAT THE SUBJECT TRACT IS GRAPHICALLY LOCATED IN "OTHER AREAS ZONE X" AS DETERMINED BY THE DEPARTMENT OF HOUSING AND URBAN DEVELOPMENT/ FEDERAL INSURANCE ADMINISTRATION AS SHOWN ON THE FEDERAL EMERGENCY MANAGEMENT AGENCY FLOOD INSURANCE RATE MAP COMMUNITY PANEL NUMBER 3710456200K DATED FEBRUARY 19, 2014.

**PRELIMINARY PLAT
 NOT FOR RECORDATION,
 SALES, OR CONVEYANCE.**

CONTACT INFORMATION
 C. Gary Brooks, PLS NC/SC/VA
 Foresite Land Surveying
 5950 Fairview Road, Suite 100
 Charlotte, NC 28210
 Phone (704) 553-8171
 Fax (704) 553-8860
 cbrooks@foresitesurveying.com

NO.	DATE	REVISION	BY

**TOPOGRAPHIC SURVEY OF A
 PORTION OF DB 26763 PG 300
 OWNER: DDR COTSWOLD LLC**

LOCATED IN CITY OF CHARLOTTE
 MECKLENBURG COUNTY
 NORTH CAROLINA

**CLIENT:
 BURTON ENGINEERING
 5950 FAIRVIEW ROAD, SUITE 100
 CHARLOTTE, NC 28210**

PROJECT NO.
 118NK1201
 SCALE
 1" = 30'
 DATE
 1/19/2016
 DRAWN BY
 PTC
 CHECKED BY
 CGB
 DATE OF SURVEY
 11/22/14 THRU 11/18/14
 DRAWING NO.
 118NK1201-WK1-BASED
 ON M033 HORIZ AND
 VERT.DWG

C0-3
 SHEET 1 OF 1

**FORESITE
 ENGINEERING
 & SURVEYING**
 5950 Fairview Road
 Suite 100
 Charlotte, NC 28210
 (704) 553-8171
 (704) 553-8860 Fax

THIS DRAWING IS THE PROPERTY OF FORESITE ENGINEERING AND LAND SURVEYING AND IS NOT TO BE REPRODUCED OR COPIED IN WHOLE OR PART. IT IS NOT TO BE USED ON ANY OTHER PROJECT AND IS TO BE RETURNED UPON REQUEST.

