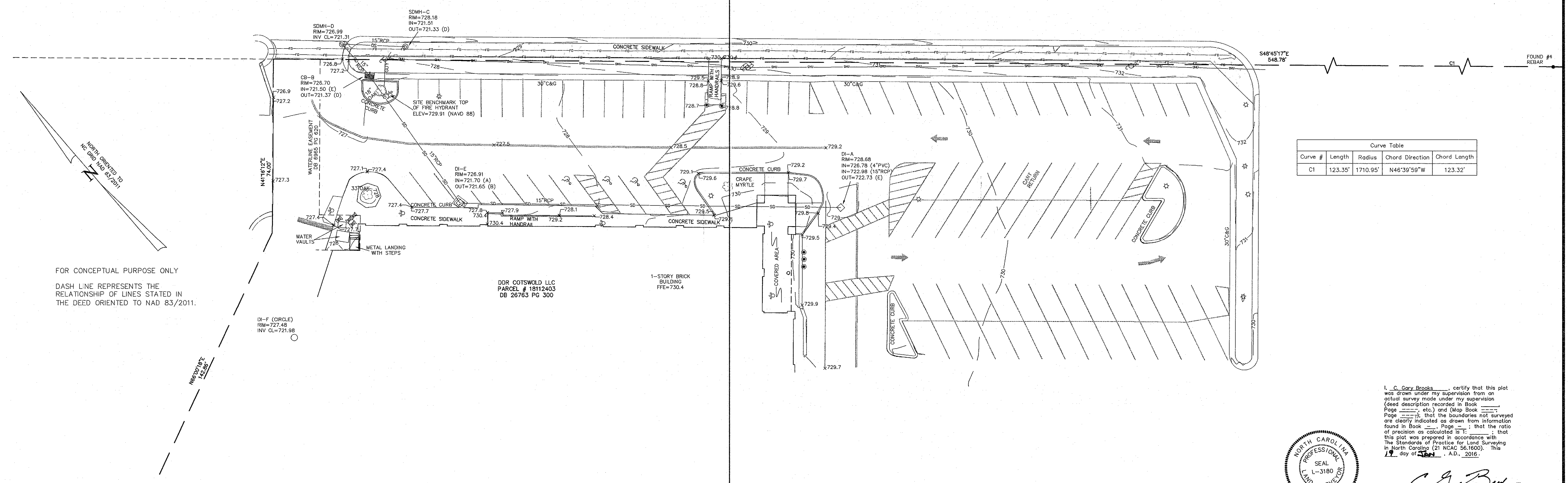
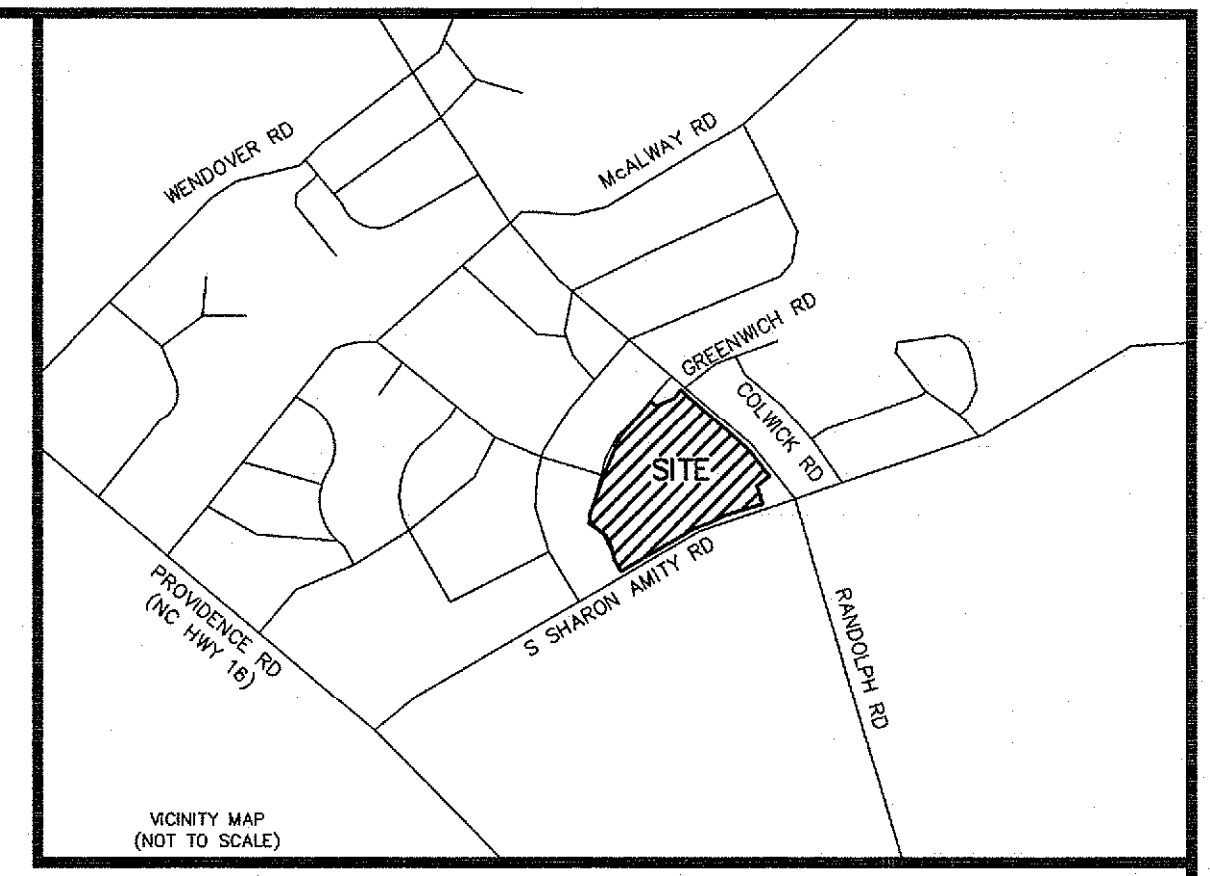


NOTES:
 THE PROPERTY MAY BE SUBJECT TO ANY EASEMENTS AND/OR RIGHTS-OF-WAY.
 THE GRAPHIC REPRESENTATION OF THE UNDERGROUND UTILITIES SHOWN ON THIS PLAT ARE APPROXIMATE. THE LOCATIONS SHOWN ON THIS PLAT WERE ESTABLISHED BY THE FIELD LOCATION OF MARKINGS REPRESENTING UNDERGROUND UTILITIES BY OTHERS OR OBTAINING INFORMATION SHOWING APPROXIMATE LOCATION.

LEGEND	
EP = EDGE OF PAVEMENT	— G — = UNDERGROUND GAS
DIA = DIAMETER	— C — = UNDERGROUND CABLE
SW = SIDE WALK	— UE — = UNDERGROUND ELECTRIC
BC = BACK OF CURB	— UF — = UNDERGROUND FIBER OPTIC
C&G = CURB AND GUTTER	— OHU — = OVERHEAD UTILITY LINE
R/W = RIGHT OF WAY	— W — = WATER LINE
DB = DEED BOOK	— F — = FENCE
PB = PLAT BOOK	— T — = TREE LINE
PG = PAGE	— SD — = STORM DRAINAGE LINE
DIP = DUCTILE IRON PIPE	— S — = SEWER LINE
NGCS = NORTH CAROLINA GEODESIC SURVEY	— G — = GUARD RAIL
NAVD = NORTH AMERICAN VERTICAL DATUM	— CL — = CENTER LINE
CF = COMBINED GRID FACTOR	— C — = CONCRETE
FES = FLARED END SECTION	— F — = FLAG POLE
FDC = FIRE DEPARTMENT CONNECTION	— T — = TRAFFIC SIGN
SDMH = STORM DRAINAGE MANHOLE	— T — = TELEPHONE PEDESTAL
SSMH = SANITARY SEWER MANHOLE	— F — = FIBER OPTIC PEDESTAL
RCR = REINFORCED CONCRETE PIPE	— S — = SANITARY SEWER MANHOLE
DI = DROP INLET	— W — = WATER VALVE
CS = CURB INLET	— SD — = STORM DRAIN MANHOLE
GT = GREASE TRAP	— W — = WATER METER
PVC = POLYVINYL CHLORIDE PIPE	— F — = FIRE DEPARTMENT CONNECTION
HDPE = HIGH-DENSITY POLYETHYLENE PIPE	— S — = SEWER CLEAN OUT
CMP = CORRUGATED METAL PIPE	— IN — = INVERT
IN = INVERT	— M — = MONITORING WELL
GM = GAS METER	— R — = ROOF DRAIN
	— 7875.5 — = SPOT ELEVATION



Curve #	Length	Radius	Chord Direction	Chord Length
C1	123.35'	1710.95'	N46°39'59"W	123.32'

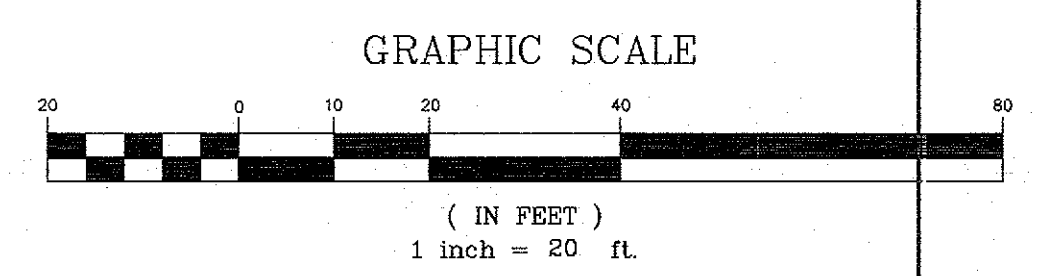


I, C. Gary Brooks, certify that this plat was drawn under my supervision from an actual survey made under my supervision (deed description recorded in Book _____, Page _____, etc.) and (Map Book _____, Page _____); that the boundaries not surveyed are clearly indicated as drawn from information found in Book _____, Page _____; that the ratio of precision as calculated is 1:_____; that this plat was prepared in accordance with the Standards of Practice for Land Surveying in North Carolina (21 NCAC 56.1600). This 19 day of _____, A.D., 2016.

C. Gary Brooks
 Surveyor
 L-3180
 Registration Number

FOUND 1" PIPE
 NGCS COORDS NAD 83/2011
 N=524,529.59
 E=1,461,642.43
 S48°47'38"E
 51.46'

NGCS MONUMENT "M 073"
 NAD 83/2011 (PUBLISHED)
 N=523,627.02
 E=1,461,944.93
 CF=0.99984403



FLOOD CERTIFICATE
 I CERTIFY THAT THE SUBJECT TRACT IS GRAPHICALLY LOCATED IN "OTHER AREAS ZONE X" AS DETERMINED BY THE DEPARTMENT OF HOUSING AND URBAN DEVELOPMENT/ FEDERAL INSURANCE ADMINISTRATION AS SHOWN ON THE FEDERAL EMERGENCY MANAGEMENT AGENCY FLOOD INSURANCE RATE MAP COMMUNITY PANEL NUMBER 3710456200K DATED FEBRUARY 19, 2014.

**PRELIMINARY PLAT
 NOT FOR RECORDATION,
 SALES, OR CONVEYANCE.**

CONTACT INFORMATION
 C. Gary Brooks, PLS, NC/SC/VA
 Foresite Land Surveying
 5950 Fairview Road, Suite 100
 Charlotte, NC 28210
 Phone (704) 553-8171
 Fax (704) 553-8860
 gbrooks@foresitesurveying.com

NO.	DATE	REVISION	BY

**TOPOGRAPHIC SURVEY OF A
 PORTION OF DB 26763 PG 300
 OWNER: DDR COTSWOLD LLC**

LOCATED IN CITY OF CHARLOTTE
 MECKLENBURG COUNTY
 NORTH CAROLINA

**CLIENT:
 BURTON ENGINEERING
 5950 FAIRVIEW ROAD, SUITE 100
 CHARLOTTE, NC 28210**

PROJECT NO.
 118NK1201
 SCALE
 1" = 30'
 DATE
 1/19/2016
 DRAWN BY
 PTC
 CHECKED BY
 CGB
 DATE OF SURVEY
 11/22/14 THRU 11/18/14
 DRAWING NO.
 118NK1201-WK1-BASED
 ON M033 HORZ AND
 VERT.049

C0-3
 SHEET 1 OF 1

**FORESITE
 ENGINEERING
 & SURVEYING**
 5950 Fairview Road
 Suite 100
 Charlotte, NC 28210
 (704) 553-8171
 (704) 553-8860 Fax

