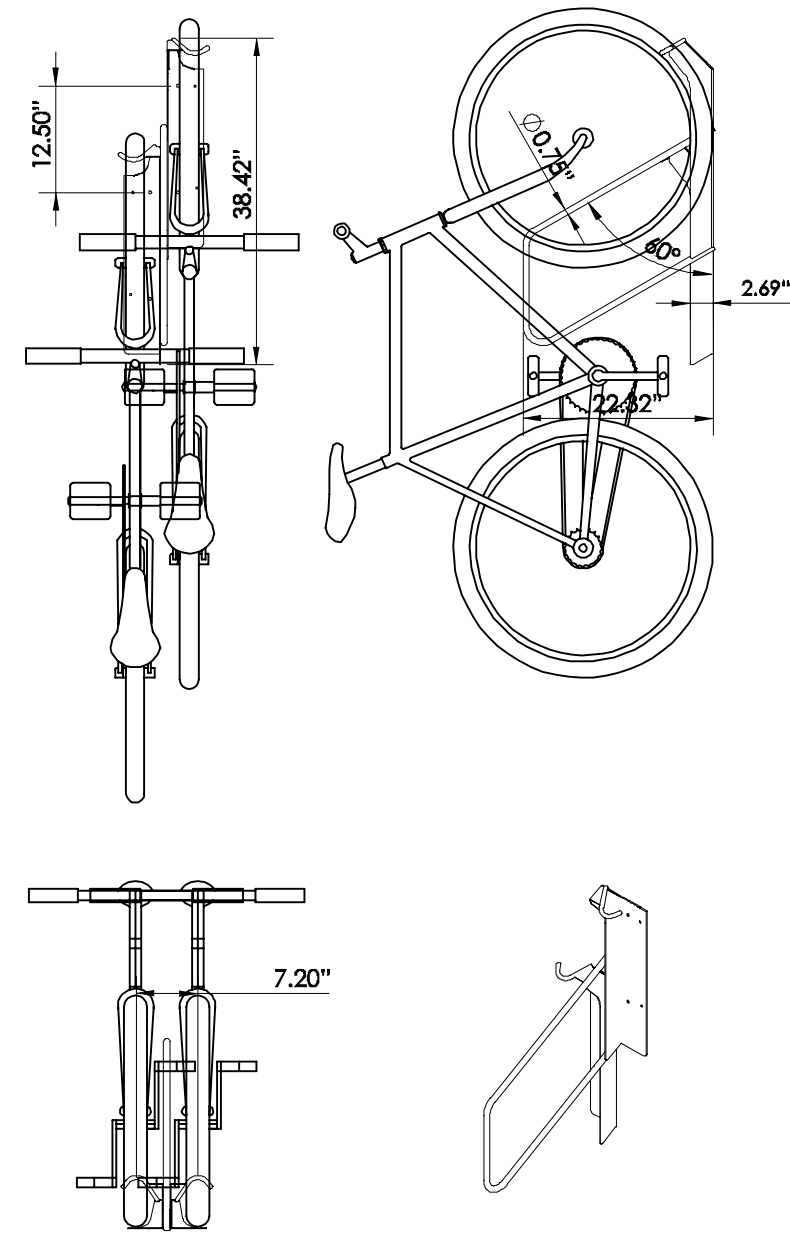


NOTES:

- BIKE RACKS SHOULD BE INSTALLED AS PER MANUFACTURER'S RECOMMENDED INSTALLATION PROCEDURES.
- ALTERNATIVE BIKE RACKS OR LOCKERS MAY BE USED BUT ARE SUBJECT TO APPROVAL BY THE CHARLOTTE DEPARTMENT OF TRANSPORTATION.
- ALL DIMENSIONS SHOWN ARE MINIMUM.
- PLACEMENT SHOULD BE CANE DETECTABLE AND PLACED OUTSIDE PEDESTRIAN ACCESS ROUTE.

NOT TO SCALE

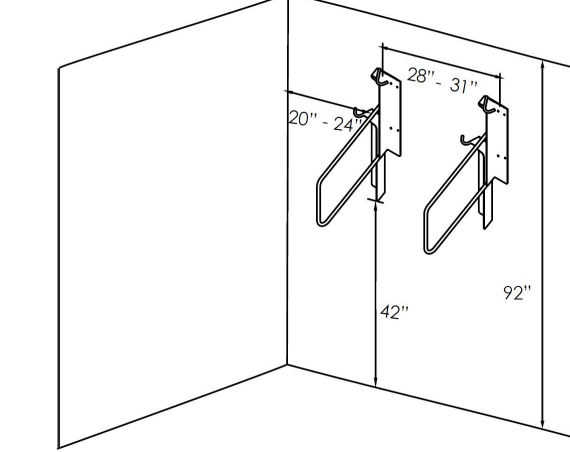


VERTICAL BIKE RACK SPECIFICATIONS:

- MANUFACTURER: PARK-A-BIKE
- MODEL: OFFSET VERTICAL BIKE RACK-VR2
- 2 BICYCLES SECURED - LONG TERM OR SHORT TERM
- ASTM A36 STEEL FOR ALL STRUCTURAL PLATE
- 1/2" SOLID STEEL ROD
- POLYVINYL SLEEVE
- POWDER COAT BLACK

SPACE USE RECOMMENDATIONS:

- DISTANCE FROM GROUND TO BOTTOM OF RACK: MIN. 42"
- CEILING HEIGHT: MIN. 92"
- SIDE WALL TO RACK CENTER: MIN. 20", RECOMMENDED 24"
- DISTANCE BETWEEN RACKS CENTER TO CENTER MIN. 28", RECOMMENDED 31"

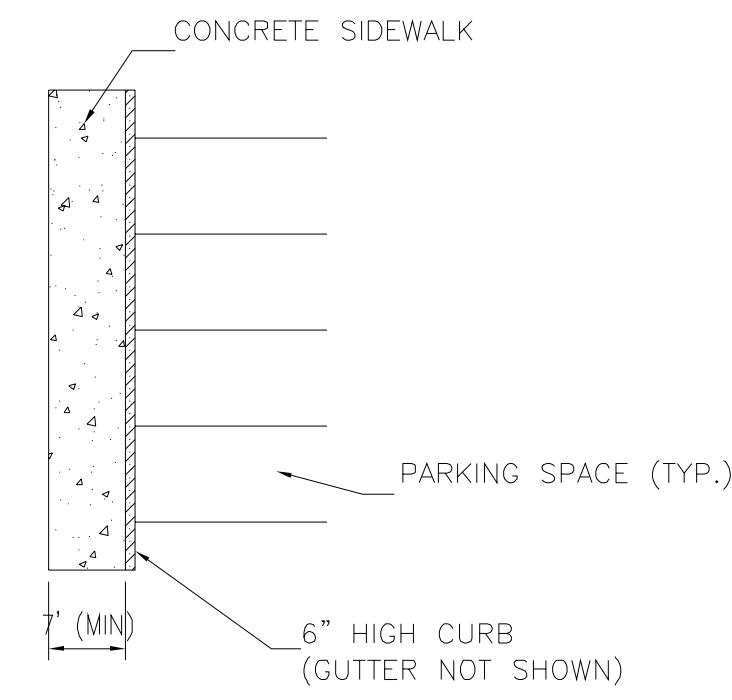


WALL MOUNTED BIKE RACK

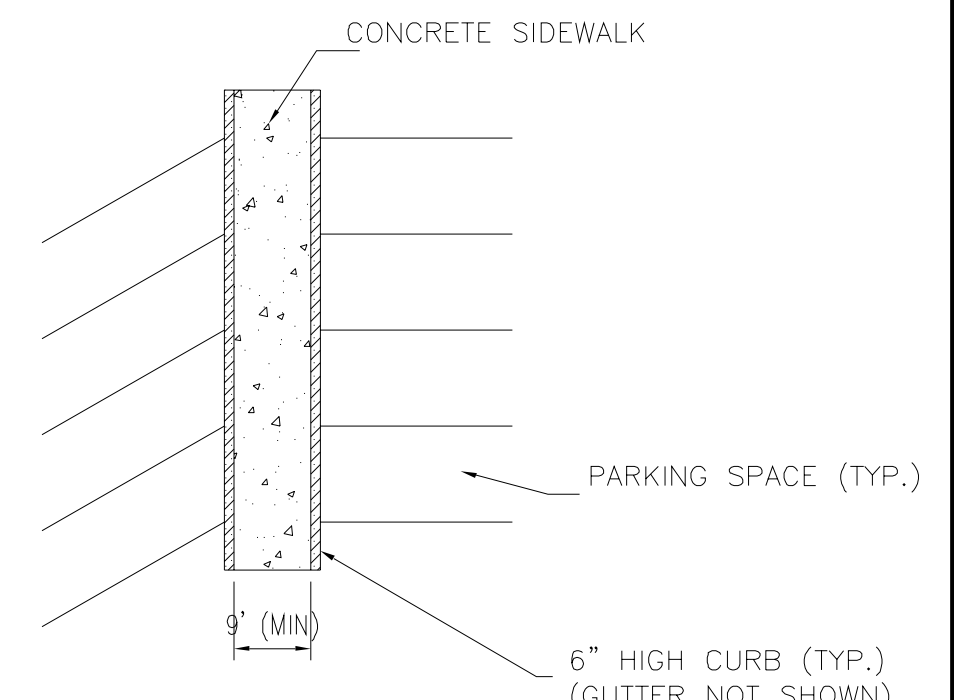
SIDEWALK ADJACENT TO HEAD-IN OR BACK-IN PARKING SHALL BE AT LEAST 7 FEET WIDE.

SIDEWALK BETWEEN TWO ROWS OF HEAD-IN OR BACK-IN PARKING SHALL BE AT LEAST 9 FEET WIDE.

PARKING ON ONE SIDE OF A SIDEWALK



PARKING ON BOTH SIDES OF A SIDEWALK



NOTES:

- A 2-FOOT-WIDE PLANTING STRIP LOCATED AT THE BACK OF CURB CAN BE USED IN LIEU OF 2 FEET OF SIDEWALK WIDTH.
- PARKING AT ANY ANGLE OTHER THAN PARALLEL SHALL BE SUBJECT TO THIS STANDARD.
- IF MONOLITHIC CURB & SIDEWALK IS USED, ADD 6" TO ALL DIMENSIONS (1' IF PARKING ON BOTH SIDES).
- WHEELSTOPS SHALL ONLY BE USED IN LIEU OF 2 FEET OF SIDEWALK WITH THE APPROVAL OF THE CITY AND WHEN EXISTING CONDITIONS PREVENT CONSTRUCTION OF A 7-FOOT/9-FOOT SIDEWALK. WHEELSTOPS SHALL BE 6" HIGH, MADE OUT OF 3600-PSI REINFORCED CONCRETE, AND ANCHORED WITH #5 OR GREATER REBAR (2' MINIMUM LENGTH). REBAR HOLES SHALL BE GROUTED UPON INSTALLATION. WHEELSTOPS SHALL BE PLACED AT 2 FEET FROM THE EDGE OF SIDEWALK OR OBSTRUCTION.

NOT TO SCALE

CITY OF CHARLOTTE
LAND DEVELOPMENT STANDARDS
INCLUDES CHARLOTTE ETJ

PARKING STANDARDS (CONTINUED)

STD. NO. REV. 50.09B 1

CITY OF CHARLOTTE
LAND DEVELOPMENT STANDARDS
INCLUDES CHARLOTTE ETJ

INVERTED "U" RACK FOR BICYCLE PARKING

STD. NO. REV. 50.20A 13

CITY OF CHARLOTTE
LAND DEVELOPMENT STANDARDS
INCLUDES CHARLOTTE ETJ

PARKING STANDARDS (CONTINUED)

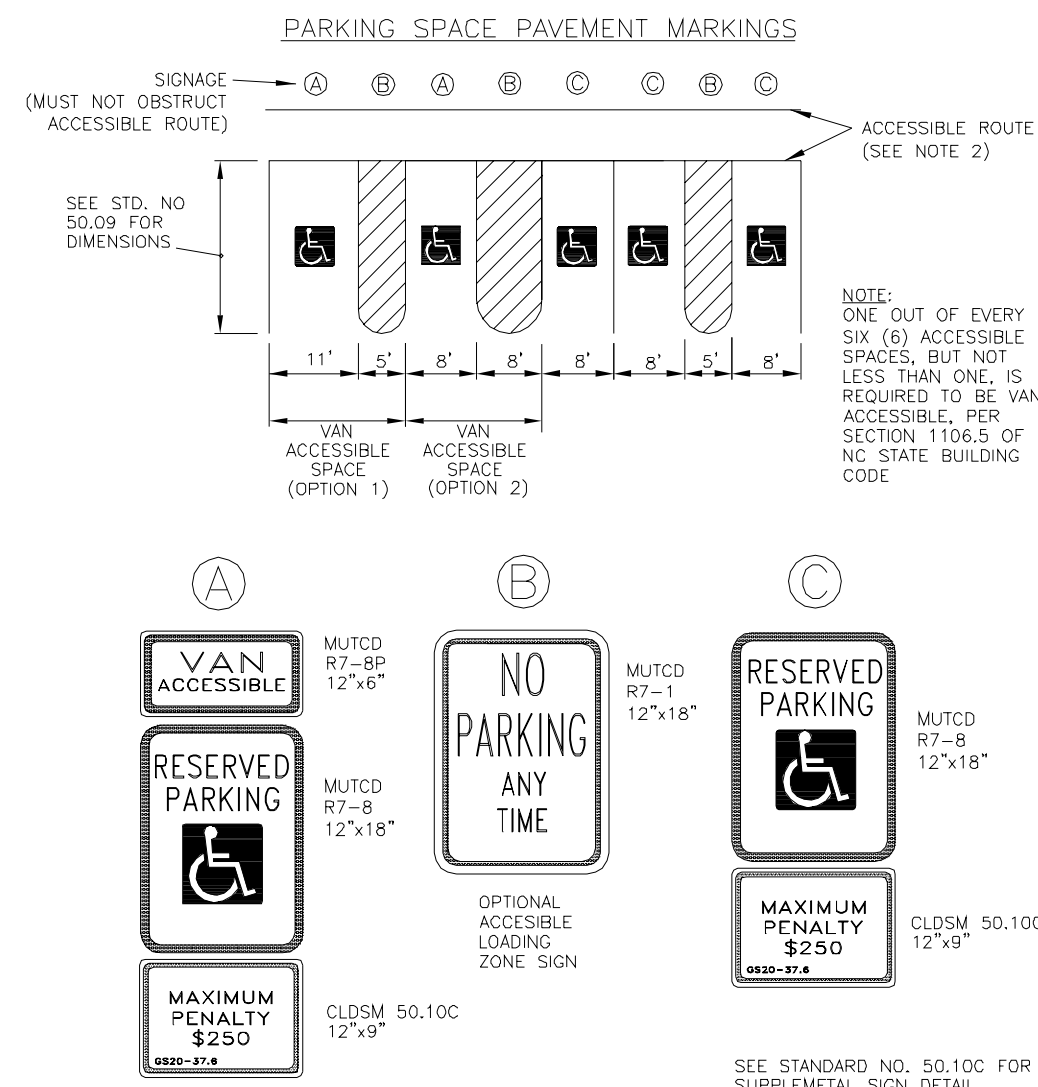
STD. NO. REV. 50.09B 1

ACCESSIBLE PARKING REQUIREMENTS

TOTAL PARKING SPACES PROVIDED	MINIMUM NUMBER OF ACCESSIBLE SPACES REQUIRED	MINIMUM NUMBER OF ACCESSIBLE SPACES REQUIRED TO BE VAN ACCESSIBLE
1 TO 25	1	1
26 TO 50	2	1
51 TO 75	3	1
76 TO 100	4	1
101 TO 150	5	1
151 TO 200	6	1
201 TO 300	7	2
301 TO 400	8	2
401 TO 500	9	2
501 TO 1000	2% OF TOTAL	1 IN EVERY 6 ACCESSIBLE SPACES
1001 AND OVER	20 PLUS 1 FOR EACH 100 OVER 1000	1 IN EVERY 6 ACCESSIBLE SPACES

REFERENCE: SECTION 1106 OF NC BUILDING CODE

- NOTES:
- ALL 12"x18" ACCESSIBLE SIGNS (R7-B & R7-1) SHALL BE MOUNTED AT 7 FEET FROM GRADE TO BOTTOM EDGE OF SIGN FACE (MUTCD). MOUNTING HEIGHT CAN BE REDUCED TO 5 FEET IF PLACED IN AN AREA BETWEEN SIDEWALK AND BUILDING FACE IN WHICH PEDESTRIANS ARE NOT EXPECTED TO USE.
 - IF ACCESSIBLE ROUTE IS A RAISED SIDEWALK AREA, THEN RAMPS ARE REQUIRED AT LOADING ZONE AREA. MAINTAIN MIN. 4" WIDE CONTINUOUS PASSAGE.
 - VERTICAL CLEARANCE FOR VANS MUST BE GREATER THAN 98-INCHES.
 - THIS DETAIL IS TO PROVIDE GENERAL GUIDANCE FOR PARKING LAYOUT AND DESIGN. REFER TO MANUAL ON UNIFORM TRAFFIC CONTROL DEVICES (MUTCD), U.S. DEPARTMENT OF TRANSPORTATION AND NORTH CAROLINA DEPARTMENT OF TRANSPORTATION SUPPLEMENT AND NC BUILDING CODE FOR ADDITIONAL INFORMATION.



NOT TO SCALE

CITY OF CHARLOTTE
LAND DEVELOPMENT STANDARDS
INCLUDES CHARLOTTE ETJ

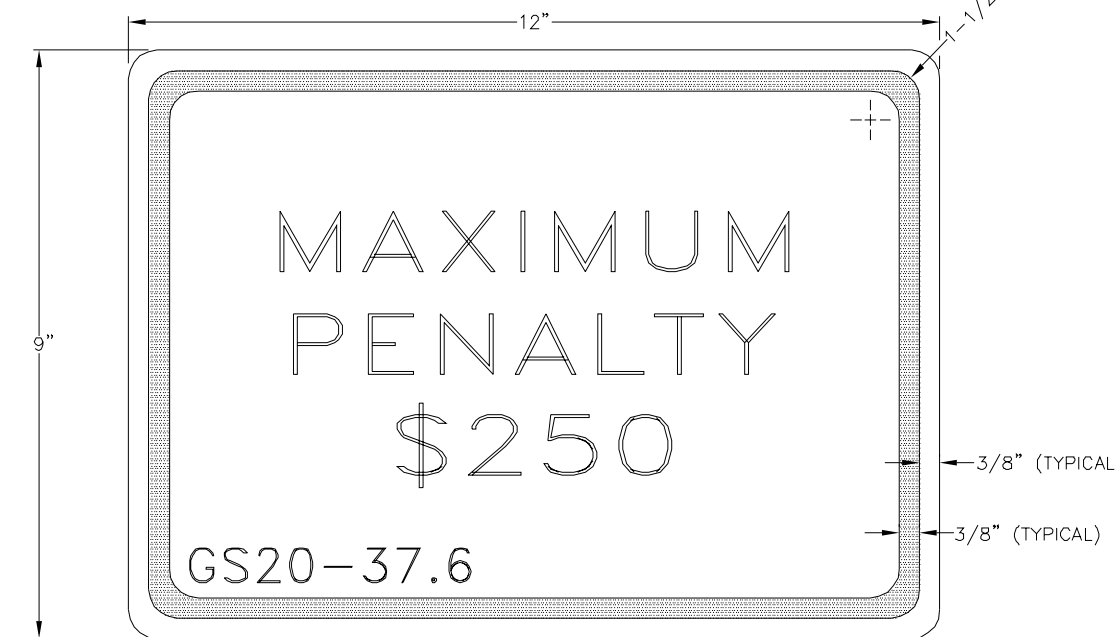
ACCESSIBLE PARKING AND SIGNAGE STANDARDS

STD. NO. REV. 50.10A 13

CITY OF CHARLOTTE
LAND DEVELOPMENT STANDARDS
INCLUDES CHARLOTTE ETJ

SUPPLEMENTAL ACCESSIBLE SIGN

STD. NO. REV. 50.10C 9



NOTE:

SUPPLEMENTAL VAN ACCESSIBLE SIGN (R7-BP) USED IF THERE IS ONLY ONE REQUIRED ACCESSIBLE PARKING SPACE (MUST BE VAN ACCESSIBLE) AND AT EACH ADDITIONAL REQUIRED VAN ACCESSIBLE SPACE. (SEE STD. NO. 50.10B)

LEGEND AND BORDER - GREEN BACKGROUND - WHITE
SIGN APPROVED FOR USE UNDER GENERAL STATUTE 20-37.6
THIS PENALTY SIGN IS REQUIRED TO ACCOMPANY ALL R7-B PARKING SIGNS ERECTED AFTER DECEMBER 31, 1990

NOT TO SCALE

CITY OF CHARLOTTE
LAND DEVELOPMENT STANDARDS
INCLUDES CHARLOTTE ETJ

ACCESSIBLE PARKING AND SIGNAGE STANDARDS

STD. NO. REV. 50.10A 13

CITY OF CHARLOTTE
LAND DEVELOPMENT STANDARDS
INCLUDES CHARLOTTE ETJ

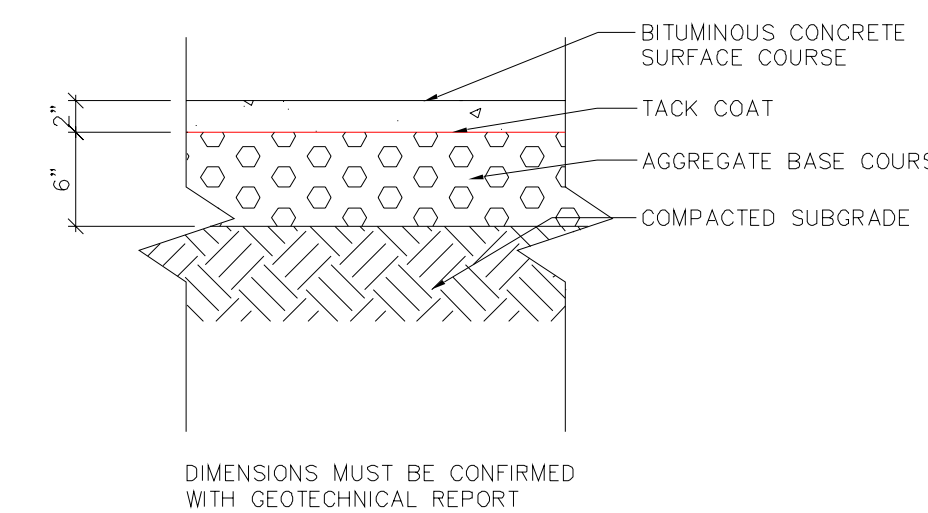
SUPPLEMENTAL ACCESSIBLE SIGN

STD. NO. REV. 50.10C 9

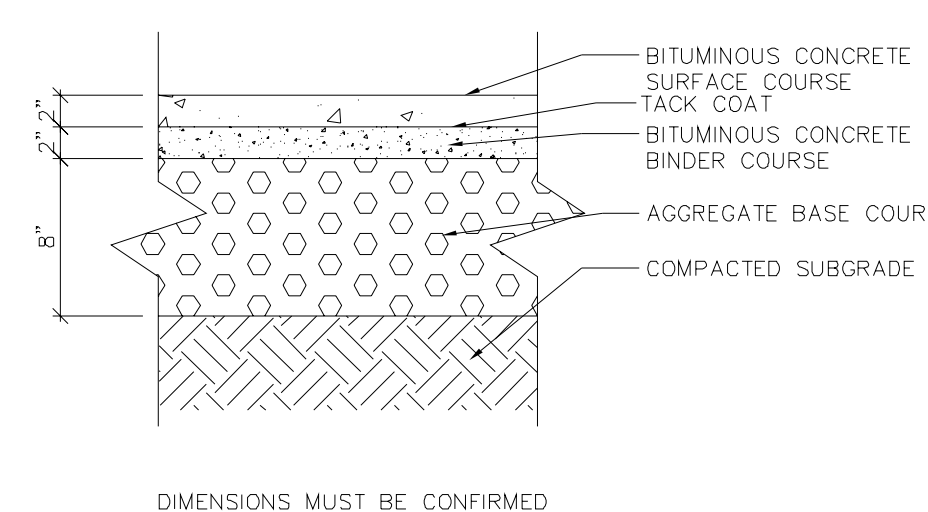
CITY OF CHARLOTTE
LAND DEVELOPMENT STANDARDS
INCLUDES CHARLOTTE ETJ

SUPPLEMENTAL VAN ACCESSIBLE SIGN (R7-8P)

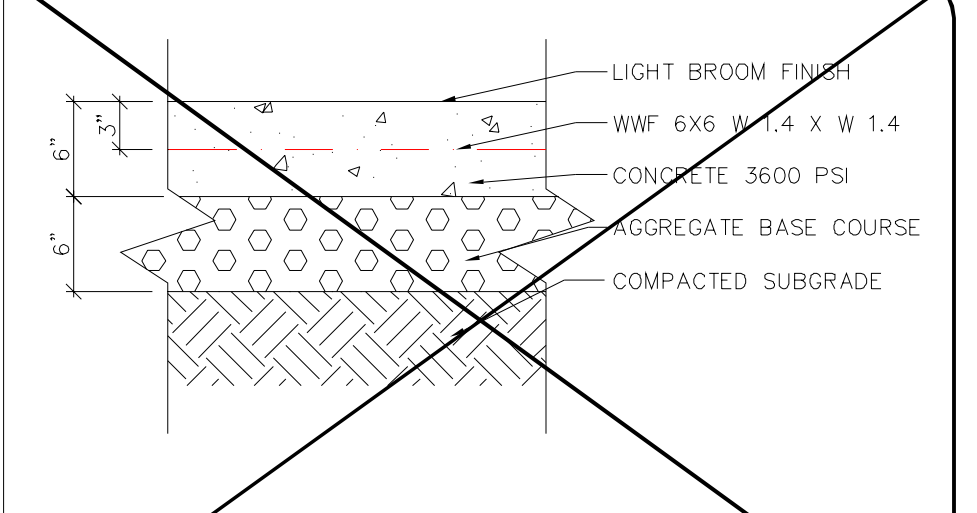
STD. NO. REV. 50.10B 9



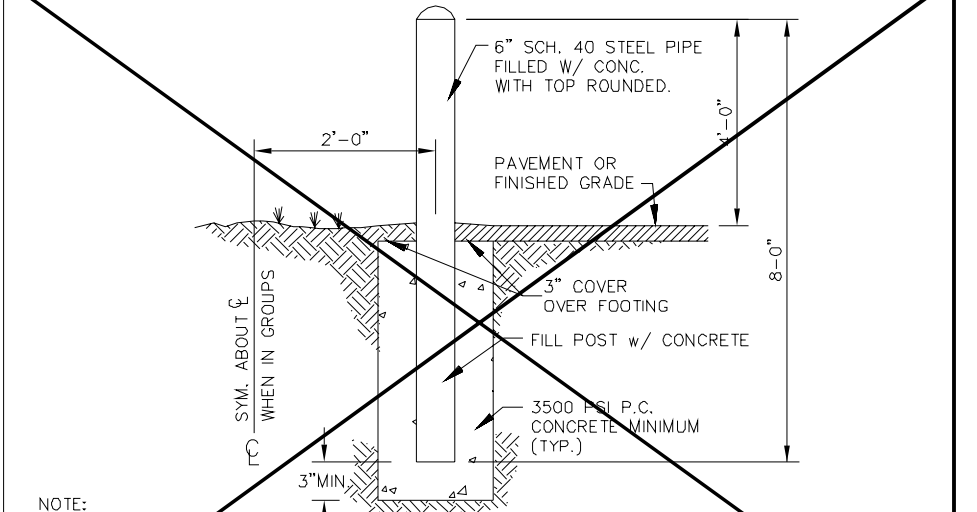
LIGHT DUTY BITUMINOUS PAVEMENT (1)



HEAVY DUTY BITUMINOUS PAVEMENT (3)



HEAVY DUTY CONCRETE N.T.S. (2)



PIPE BOLLARD N.T.S.

BANKS ENGINEERING
1919 SOUTH BOULEVARD
SUITE 200
CHARLOTTE, NC 28203
T: 704.780.4972
NC License #P-1370
© 2016

Harris Teeter
CLIENT: Harris Teeter
10.19.16

PROFESSIONAL SEAL
D. BLANKS
10.19.16

PROJECT: HARRIS TEETER EXPANSION
112 S. SHARON AMITY
CHARLOTTE, NC 28211

SHEET: SITE DETAILS - 2

REV.	DATE	DESCRIPTION
F	10.19.16	Revised per backflow reviewer comments
E	08.26.16	Revised building footprint
D	03.04.16	Added backflow preventers per Big. Sigs. review.
C	02.26.16	Per Building Standards review comments
B	01.28.16	2nd Submittal to City of Charlotte
A	01.21.16	Rev 1st Submittal to City of Charlotte
-	01.13.16	1st Submittal to City of Charlotte

DESIGNED: JDB
DRAWN:
CHECKED:
PROJECT: 01014001
DATE: 01.13.16

C7-1