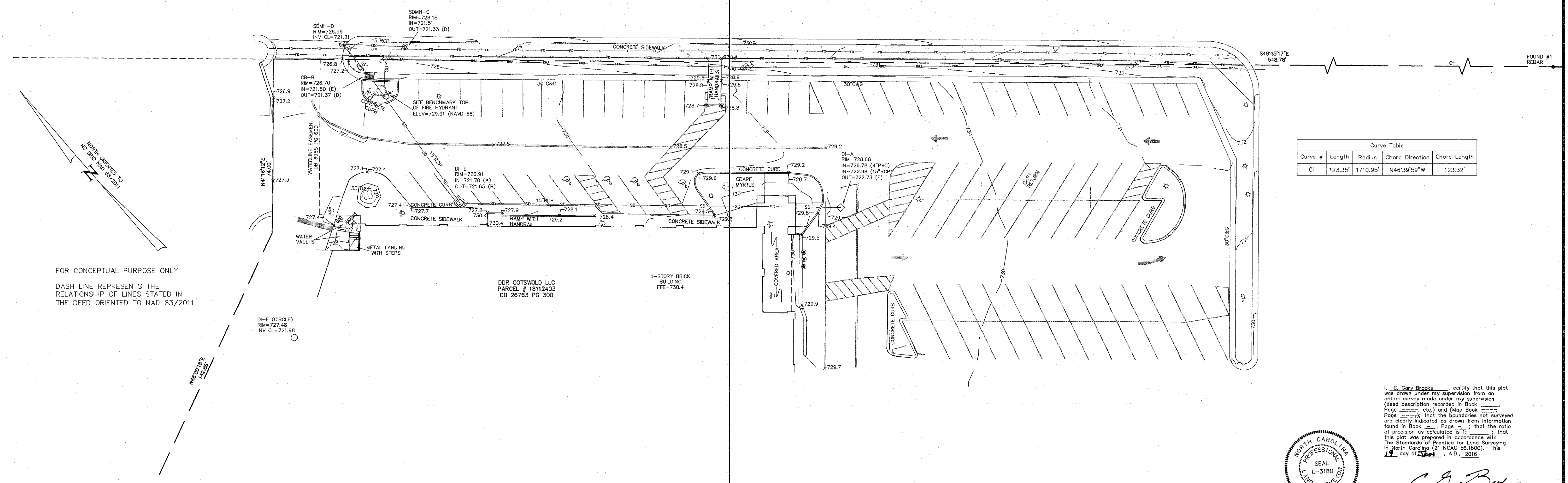
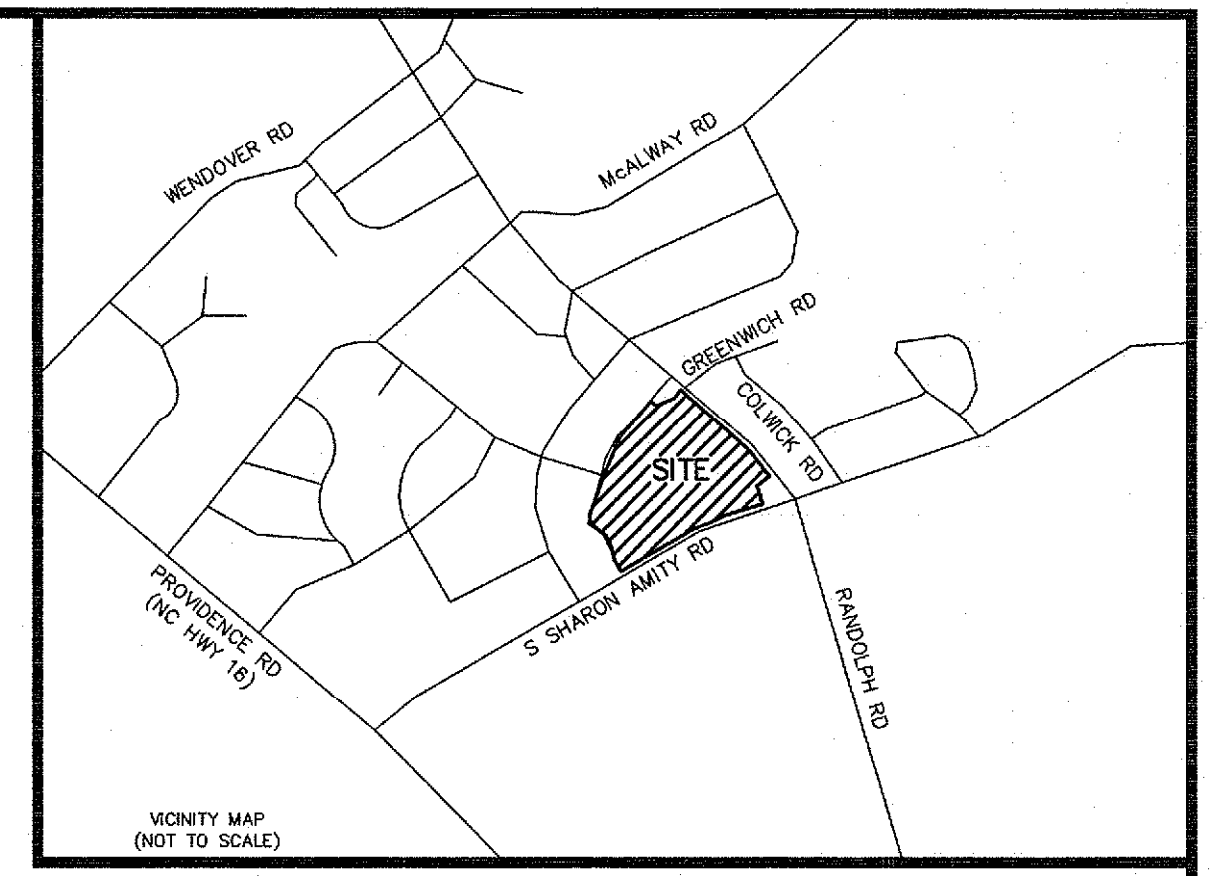


NOTES:
 THE PROPERTY MAY BE SUBJECT TO ANY EASEMENTS AND/OR RIGHTS-OF-WAY.
 THE GRAPHIC REPRESENTATION OF THE UNDERGROUND UTILITIES SHOWN ON THIS PLAT ARE APPROXIMATE. THE LOCATIONS SHOWN ON THIS PLAT WERE ESTABLISHED BY THE FIELD LOCATION OF MARKINGS REPRESENTING UNDERGROUND UTILITIES BY OTHERS OR OBTAINING INFORMATION SHOWING APPROXIMATE LOCATION.

LEGEND	
EP = EDGE OF PAVEMENT	— G — = UNDERGROUND GAS
DIA = DIAMETER	— C — = UNDERGROUND CABLE
SW = SIDE WALK	— UE — = UNDERGROUND ELECTRIC
BC = BACK OF CURB	— UF — = UNDERGROUND FIBER OPTIC
C&G = CURB AND GUTTER	— OHU — = OVERHEAD UTILITY LINE
R/W = RIGHT OF WAY	— W — = WATER LINE
DB = DEED BOOK	— F — = FENCE
PB = PLAT BOOK	— T — = TREE LINE
PG = PAGE	— SD — = STORM DRAINAGE LINE
DIP = DUCTILE IRON PIPE	— S — = SEWER LINE
NGCS = NORTH CAROLINA GEODESIC SURVEY	— G — = GUARD RAIL
NAVD = NORTH AMERICAN VERTICAL DATUM	— CL — = CENTER LINE
CF = COMBINED GRID FACTOR	— C — = CONCRETE
FES = FLARED END SECTION	— F — = FLAG POLE
FDC = FIRE DEPARTMENT CONNECTION	— FP — = FIRE HYDRANT
SDMH = STORM DRAINAGE MANHOLE	— G — = GAS VALVE
SMH = SANITARY SEWER MANHOLE	— P — = POLYVINYL CHLORIDE PIPE
SDMH = STORM DRAIN MANHOLE	— HDPE — = HIGH-DENSITY POLYETHYLENE PIPE
SMH = SANITARY SEWER MANHOLE	— CMP — = CORRUGATED METAL PIPE
RCP = REINFORCED CONCRETE PIPE	— INV — = INVERT
DI = DROP INLET	— OM — = GAS METER
CS = CURB INLET	
GT = GREASE TRAP	
PVC = POLYVINYL CHLORIDE PIPE	
HDPE = HIGH-DENSITY POLYETHYLENE PIPE	
CMP = CORRUGATED METAL PIPE	
INV = INVERT	
OM = GAS METER	
	— T — = TREE
	— S — = SHRUB
	— SP — = SPACE NUMBER
	— M — = COMMUNICATION MANHOLE
	— D — = DIRECTION OF FLOW
	— W — = WELL
	— IR — = IRON (SEE DESCRIPTION)
	— C — = CARBONITE UNDERGROUND FIBER OPTIC CABLE POST
	— M — = MAILBOX

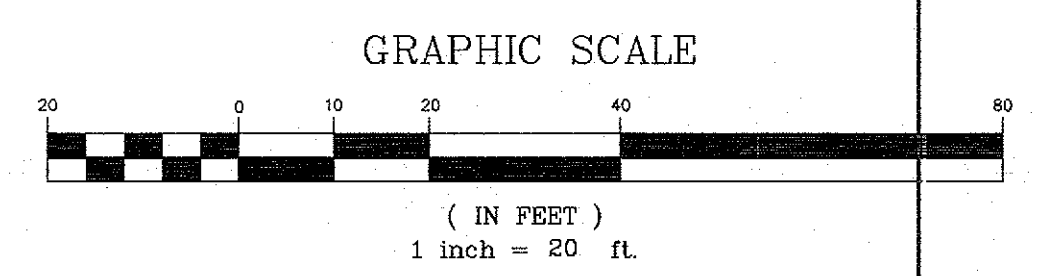


Curve #	Length	Radius	Chord Direction	Chord Length
C1	123.35'	1710.95'	N46°39'59"W	123.32'

FOR CONCEPTUAL PURPOSE ONLY
 DASH LINE REPRESENTS THE RELATIONSHIP OF LINES STATED IN THE DEED ORIENTED TO NAD 83/2011.

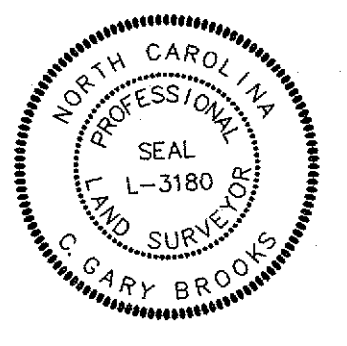
FOUND 1" PIPE
 NGCS COORDS NAD 83/2011
 N=524,529.59
 E=1,461,642.43
 S48°47'38"E
 51.46'

NGCS MONUMENT "M 073"
 NAD 83/2011 (PUBLISHED)
 N=523,627.02
 E=1,461,944.93
 CF=0.99984403



FLOOD CERTIFICATE
 I CERTIFY THAT THE SUBJECT TRACT IS GRAPHICALLY LOCATED IN "OTHER AREAS ZONE X" AS DETERMINED BY THE DEPARTMENT OF HOUSING AND URBAN DEVELOPMENT/ FEDERAL INSURANCE ADMINISTRATION AS SHOWN ON THE FEDERAL EMERGENCY MANAGEMENT AGENCY FLOOD INSURANCE RATE MAP COMMUNITY PANEL NUMBER 3710456200K DATED FEBRUARY 19, 2014.

**PRELIMINARY PLAT
 NOT FOR RECORDATION,
 SALES, OR CONVEYANCE.**



I, C. Gary Brooks, certify that this plat was drawn under my supervision from an actual survey made under my supervision (deed description recorded in Book _____, Page _____, etc.) and (Map Book _____, Page _____); that the boundaries not surveyed are clearly indicated as drawn from information found in Book _____, Page _____; that the ratio of precision as calculated is 1:_____; that this plat was prepared in accordance with the Standards of Practice for Land Surveying in North Carolina (21 NCAC 56.1600). This 19 day of _____, A.D., 2016.

C. Gary Brooks
 Surveyor
 L-3180
 Registration Number

NO.	DATE	REVISION	BY

**TOPOGRAPHIC SURVEY OF A
 PORTION OF DB 26763 PG 300
 OWNER: DDR COTSWOLD LLC**

LOCATED IN CITY OF CHARLOTTE
 MECKLENBURG COUNTY
 NORTH CAROLINA

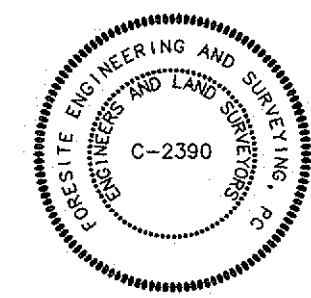
**CLIENT:
 BURTON ENGINEERING
 5950 FAIRVIEW ROAD, SUITE 100
 CHARLOTTE, NC 28210**

PROJECT NO. 118NK1201
 SCALE 1" = 30'
 DATE 1/19/2016
 DRAWN BY PTC
 CHECKED BY CGB
 DATE OF SURVEY 11/22/14 THRU 11/18/14
 DRAWING NO. 118NK1201-WK1-BASED ON M033 HORZ AND VERT.DWG

C0-3
 SHEET 1 OF 1

**FORESITE
 ENGINEERING
 & SURVEYING**
 5950 Fairview Road
 Suite 100
 Charlotte, NC 28210
 (704) 553-6171
 (704) 553-8860 Fax
 cbrooks@foresitesurveying.com

THIS DRAWING IS THE PROPERTY OF FORESITE ENGINEERING AND LAND SURVEYING AND IS NOT TO BE REPRODUCED OR COPIED IN WHOLE OR PART. IT IS NOT TO BE USED ON ANY OTHER PROJECT AND IS TO BE RETURNED UPON REQUEST.



CONTACT INFORMATION
 C. Gary Brooks, PLS, NC/SC/VA
 Foresite Land Surveying
 5950 Fairview Road, Suite 100
 Charlotte, NC 28210
 Phone (704) 553-6171
 Fax (704) 553-8860
 cbrooks@foresitesurveying.com