

**EXISTING PANEL 'B'**  
SUPPLY: 208/120V, 3-PH, 4W  
MAINS: 200A MLO  
INTERRUPT RATING: 22K AIC  
MOUNTING: RECESSED

TYPE: BRANCH CIRCUIT  
BUS MATERIAL: .  
MANUFACTURER: .

(LEFT SECTION)

DESCRIPTION	TRIP	POLE	WIRE	CCT	PHASE LOAD SUMMARY			CCT	WIRE	TRIP	DESCRIPTION	
					PHASE A	PHASE B	PHASE C					
(1) CHECKOUT 1,2	20	1	10	1	0.6	0.7		2	12	1	20 REC: STORE MGR	
(1) CHECKOUT 3,4	20	1	10	3		0.6	1.0	4	12	1	20 BAG ICE MACH	
(1) CHECKOUT 5,6	20	1	10	5			0.6	0.5	6	12	1	20 REC: RESTROOMS
(1) CHECKOUT 7,8	20	1	10	7	0.6	1.0		8	12	1	20 EWC	
(1) CHECKOUT 9,10	20	1	10	9		0.6	0.5	10	12	1	20 REC: EXTERIOR	
(1) U-SCAN STATION	20	1	12	11			0.3	0.5	12	12	1	20 REC: EXTERIOR
(1) PLOGSTRIP ACCOUNT	20	1	12	13	0.5	0.7		14	12	1	20 REC: CUST SERV	
(1) PLOGSTRIP ACCOUNT	20	1	12	15		0.5	0.4	16	12	1	20 REC: DEPT. MGR	
(1) AUTO DOOR CONT	20	1	10	17			1.0	0.4	18	12	1	20 REC: DEPT. MGR
(1) AUTO DOOR CONT	20	1	10	19	1.0	0.4		20	12	1	20 REC: DEPT. MGR	
(1) HANDI CART CHARGER	30	1	10	21		1.0	0.4	22	12	1	20 REC: DEPT. MGR	
(1) HANDI CART CHARGER	30	1	10	23			1.0	0.1	24	12	1	20 LTG: CUST SERV
(1) SPARE	20	1	0	25	0.0	0.0		26	0	1	20 SPARE	
(1) SPARE	20	1	0	27		0.0	0.0	28	0	1	20 SPARE	
(1) SPARE	20	1	0	29			0.0	0.0	30	0	1	20 SPARE
(1) EF-1 (RESTROOMS)	20	1	12	31	0.5	1.0		32	10	1	30 BEVERAGE CASE	
(1) REC: ROOFTOP	20	1	12	33		0.4	1.0	34	10	1	20 BEVERAGE CASE	
(1) REC: CHECKOUT DISP	20	1	12	35			0.4	0.4	36	12	1	20 REC: FRONT END
(1) REC: CUST. SERVICE	20	1	12	37	0.4	0.4		38	12	1	20 REC: PHARMACY	
(1) REC: ACC OFFICE	20	1	12	39		0.7	0.4	40	12	1	20 REC: PHARMACY	
(1) RUG DOCTOR	20	1	12	41			0.6	0.4	42	12	1	20 REC: PHARMACY

**EXISTING PANELBOARD MDP**  
SERVICE: 480/277V, 3-PH, 4W  
BUSES: 1200A COPPER

TYPE: CIRCUIT BREAKER  
S.C. RATING:  
MANUFACTURER: .

CONNECTED LOAD (KVA)

UNIT	LOAD SERVED	PROTECTION			WIRE & CONDUIT	REMARKS	LOAD (KVA) PER PHASE		
		POLE	FRAME	TRIP			A	B	C
1	MAIN BREAKER	3	1200	1200	(4 SETS) 4-350 KCMIL, IN 3" C.	(4)	254.2	254.2	254.2
2	HVAC-3 (Backroom)	3	100	25	3#10, 1#100, IN 3/4" C.	(4)	4.7	4.7	4.7
3	HVAC-5 (Vestibule)	3	100	25	3#10, 1#100, IN 3/4" C.	(4)	4.7	4.7	4.7
4	HVAC-4 (Produce Area)	3	100	40	3#8, 1#100, IN 3/4" C.	(4)	7.7	7.7	7.7
5	HVAC-1 (Checkout)	3	100	70	3#8, 1#80, IN 1" C.	(4)	13.0	13.0	13.0
6	HVAC-2 (Frozen Food)	3	100	70	3#4, 1#80, IN 1" C.	(4)	13.0	13.0	13.0
7	PANEL "B" via TRANSFORMER	3	100	90	4#8, 1#100, IN 3/4" C.	(4)	15.3	15.3	15.3
8	SPARE	3	100	100			0.0	0.0	0.0
9	SPARE ONLY	3	100		100A PROVISIONS		0.0	0.0	0.0
10	PANEL "DB" via TRANSFORMER	3	225	125	3#1, 1#60, IN 1 1/2" C.	(4)	25.7	25.7	25.7
11	SPARE	3	225	225			0.0	0.0	0.0
12	PANEL "LPA"	3	225	225	4#4/0, 1#1G, IN 2 1/2" C.	(5)	0.0	0.0	0.0
13	SPARE	3	225	225			0.0	0.0	0.0
14	SPARE ONLY	3	225		225A PROVISIONS		0.0	0.0	0.0
15	PANEL "SDP" via TRANSFORMER	3	600	500	3-250 KCMIL, #2G, IN 2 1/2" C.	(4)	83.9	83.9	83.9
16	REFRIGERATION PENTHOUSE	3	600	600	3-350 KCMIL, #1G, IN 3" C.	(4)	86.3	86.3	86.3

NOTES:  
1. PROVIDE WITH EQUIPMENT GROUND BUS AND TYPE WRITTEN DIRECTORY.  
2. PANELBOARD SHALL BE UL SERVICE ENTRANCE RATED.  
3. PROVIDE A 100% RATED MAIN BREAKER.  
4. EXISTING CIRCUIT BREAKER WITH EXISTING LOAD.  
5. EXISTING CIRCUIT BREAKER WITH NEW LOAD.

**DRAWING E1.1 GENERAL NOTE**  
CIRCUIT NUMBERS INDICATED ARE BASED ON EXISTING AND AS-BUILD DRAWINGS. IT SHALL BE THE RESPONSIBILITY OF THE ELECTRICAL CONTRACTOR TO VERIFY THE CIRCUIT INFORMATION SHOWN PRIOR TO THE START OF ELECTRICAL WORK IN THE AREA.

**DRAWING E1.1 KEYNOTES**  
1. CONNECT TO EXISTING 1P/20A LIGHTING CIRCUIT "LPA-14" THAT CURRENTLY SERVES THE PHARMACY AREA. CONNECT USING 2#12, 1#12G, IN 1/2" C.  
2. ROLL-UP GRILLE 120V, 1x, 1/2 HP. PROVIDE CIRCUIT AS SHOWN VIA 2-#10, 1-#10 GROUND IN 3/4" CONDUIT. COORDINATE EXACT LOCATION AND REQUIREMENTS WITH HARRIS TEETER'S FIELD AUTHORIZED REPRESENTATIVE.  
3. KEY SWITCH CONTROL STATION FOR ROLL-UP GRILLE FURNISHED BY EQUIPMENT MANUFACTURER AND INSTALLED BY EC. COORDINATE EXACT REQUIREMENTS WITH HARRIS TEETER'S FIELD AUTHORIZED REPRESENTATIVE.

**EXISTING PANEL 'B'**  
SUPPLY: 208/120V, 3-PH, 4W  
MAINS: 200A MLO  
INTERRUPT RATING: 22K AIC  
MOUNTING: RECESSED

TYPE: BRANCH CIRCUIT  
BUS MATERIAL: .  
MANUFACTURER: .

(RIGHT SECTION)

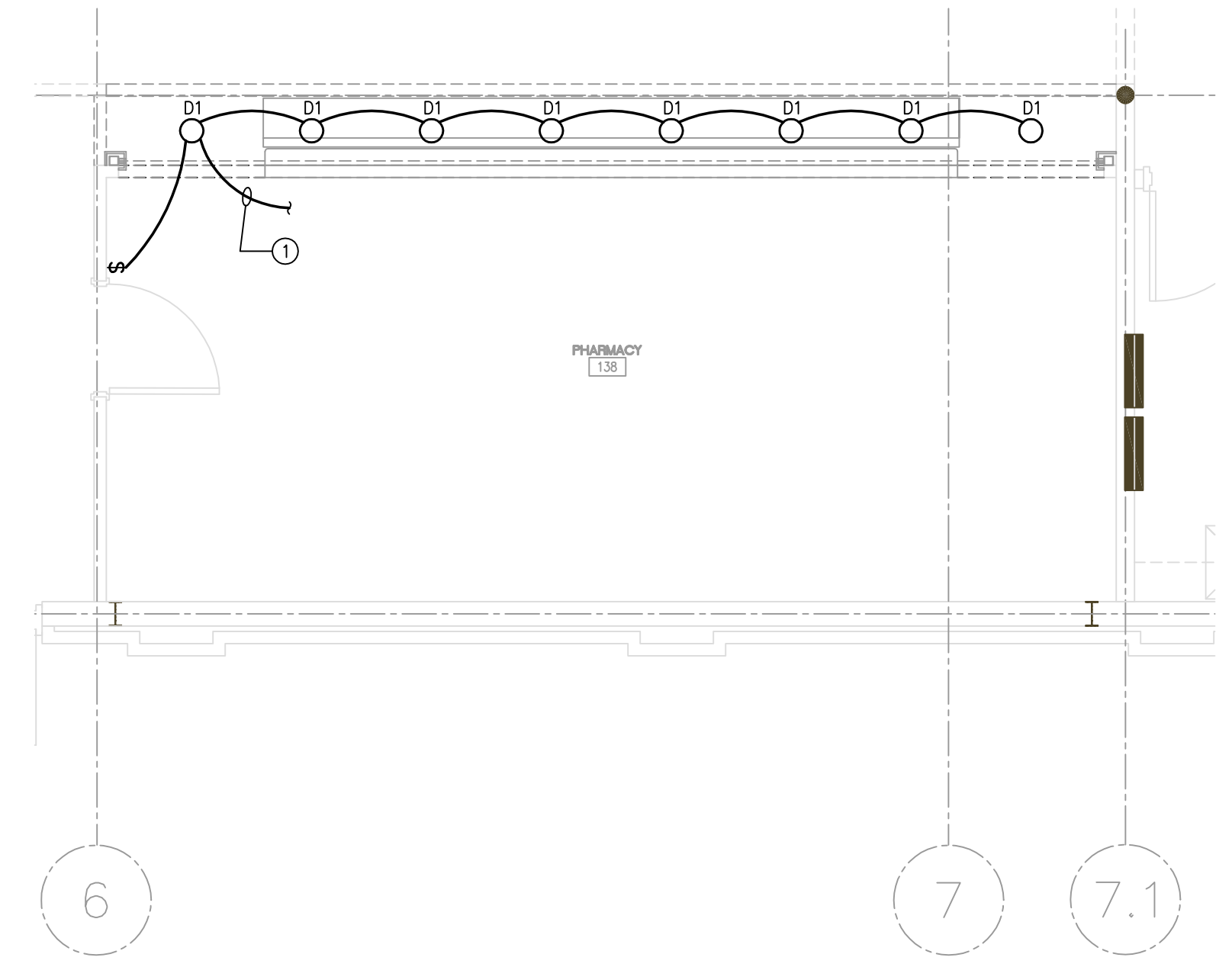
DESCRIPTION	TRIP	POLE	WIRE	CCT	PHASE LOAD SUMMARY			CCT	WIRE	TRIP	DESCRIPTION	
					PHASE A	PHASE B	PHASE C					
(1) DRINK MACHINE	20	1	12	43	1.0	0.7		44	12	1	20 BLOOD PRESSURE	
(1) COIN STAR MACH	20	1	12	45		1.0	0.9	46	12	1	20 COLLING DOOR	
(1) HVAC CONTACTOR	20	1	12	47			0.2	0.0	48	1	20 SPARE	
(1) AIR COMPRESSOR	20	1	12	49	0.9	0.0		50	1	20 SPARE		
(1) SPARE	20	1	1	51		0.0	0.0	52	1	20 SPARE		
(1) SPARE	20	1	1	53			0.0	0.0	54	1	20 SPARE	
(1) SPARE	20	1	0	55	0.0	2.1		56	8	1	20 SPARE	
(1) SPARE	20	1	0	57		0.0	2.1	58	8	3	35 ACCU-1 (MGR'S OFF)	
(1) SPARE	20	1	0	59			0.0	2.1	60	8	1	20 SPARE
(1) SPARE	20	1	0	61	0.0	0.0		62	1	1	SPARE ONLY	
(1) SPARE	20	1	0	63		0.0	0.0	64	1	1	SPARE ONLY	
(1) SPARE	20	1	0	65			0.0	0.0	66	1	1	SPARE ONLY
(1) SPARE	20	1	0	67	0.0	0.0		68	1	1	SPARE ONLY	
(1) SPARE	20	1	0	69		0.0	0.0	70	1	1	SPARE ONLY	
(1) SPARE	20	1	0	71			0.0	0.0	72	1	1	SPARE ONLY
(1) SPARE	20	1	0	73	0.0	0.0		74	1	1	SPARE ONLY	
(1) SPARE	20	1	0	75		0.0	0.0	76	1	1	SPARE ONLY	
(1) AH-1/CU-1 (PHARM)	30	2	10	77		1.2	0.0	78	1	1	SPARE ONLY	
(1)	20	1	0	79	1.2	0.0		80	1	1	SPARE ONLY	
(1) AHU-1(MGRS OFFICE)	50	2	6	81		6.9	0.0	82	1	1	SPARE ONLY	
(1)	20	1	0	83			3.8	0.0	84	1	1	SPARE ONLY
TOTAL KVA PER PHASE					13.6	18.2	13.5					
DIVERSIFIED KVA PER PHASE					12.2	18.2	13.5					
DIVERSIFIED TOTAL KVA					43.9 KVA							
MAXIMUM AMPS HEAVIEST PHASE					151.1 AMPS							
REQUIREMENTS:					1. EXISTING CIRCUIT BREAKER WITH EXISTING LOAD. 2. EXISTING CIRCUIT BREAKER WITH NEW LOAD.							

**EXISTING PANEL LPA**  
SUPPLY: 480/277V, 3-PH, 4W  
MAINS: 225A MLO  
INTERRUPT RATING: 22K AIC  
MOUNTING: RECESSED

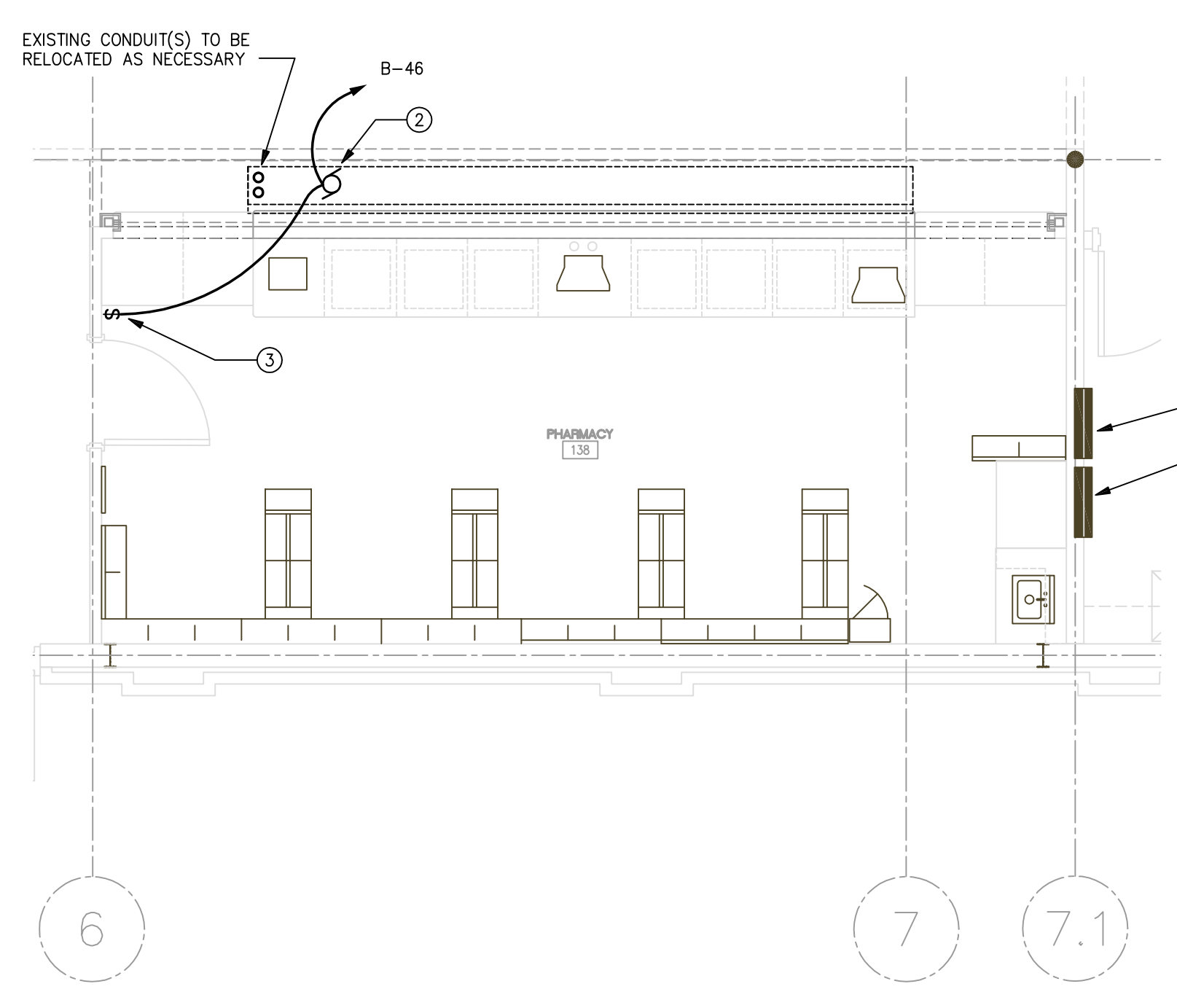
TYPE: BRANCH CIRCUIT  
BUS MATERIAL: .  
MANUFACTURER: .

(LEFT SECTION)

DESCRIPTION	TRIP	POLE	WIRE	CCT	PHASE LOAD SUMMARY			CCT	WIRE	TRIP	DESCRIPTION	
					PHASE A	PHASE B	PHASE C					
(1) LTG: GONDOLAS	20	1	10	1	3.4	1.8		2	12	1	20 LTG: EXT. WALLPACKS	
(1) LTG: GONDOLAS	20	1	10	3		3.0	3.1	4	10	1	20 LTG: ENTRY/EXIT	
(1) LTG: GONDOLAS	20	1	10	5			3.0	1.3	6	12	1	20 LTG: WALLWASH
(1) LTG: GONDOLAS	20	1	10	7	3.0	1.1		8	12	1	20 LTG: WALLWASH	
(1) LTG: PREP AREAS	20	1	10	9		1.4	2.3	10	12	1	20 LTG: STOCK RECEIVING	
(1) LTG: PREP AREAS	20	1	12	11			2.1	0.2	12	12	1	20 LTG: STOCK RECEIVING
(1) EM BATTERY PACKS	20	1	12	13	0.5	2.9		14	10	1	20 LTG: FRONT OF STORE	
(1) LTG: SALES AREA	20	1	12	15		3.4	3.8	16	12	1	20 LTG: SALES AREA	
(1) LTG: SALES AREA	20	1	12	17			3.4	3.8	18	12	1	20 LTG: SALES AREA
(1) LTG: SALES AREA	20	1	12	19	3.4	3.0		20	12	1	20 LTG: SALES AREA	
(1) LTG: SALES AREA	30	1	12	21		3.4	3.4	22	12	1	20 LTG: SALES AREA	
(1) LTG: SALES AREA	30	1	12	23			3.4	3.4	24	12	1	20 LTG: SALES AREA
(1) LTG: SALES AREA	20	1	12	25	3.4	3.4		26	12	1	20 LTG: SALES AREA	
(1) LTG: CHECKOUT	20	1	12	27		2.5	3.8	28	12	1	20 LTG: SALES AREA	
(1) SPARE	20	1	1	29			0.0	3.8	30	12	1	20 LTG: SALES AREA
(1) SPARE	20	1	1	31	0.0	2.5		32	12	1	30 LTG: CHECKOUTS	
(1) SPARE	20	1	1	33		0.0	0.0	34	0	1	20	
(1) SPARE	20	1	1	35			0.0	0.0	36	0	1	20
(1) SPARE	20	1	1	37	0.0	0.0		38	0	1	20	
(1) SPARE	20	1	1	39		0.0	0.0	40	0	1	20	
(1) SPARE	20	1	1	41			0.0	0.0	42	0	1	20
TOTAL KVA PER PHASE					28.3	29.9	24.2					
DIVERSIFIED KVA PER PHASE					35.3	37.4	30.3					
DIVERSIFIED TOTAL KVA					103.0 KVA							
MAXIMUM AMPS HEAVIEST PHASE					134.9 AMPS							
REQUIREMENTS:					1. EXISTING CIRCUIT BREAKER WITH EXISTING LOAD. 2. EXISTING CIRCUIT BREAKER WITH NEW LOAD.							



**1 FLOOR PLAN - LIGHTING**  
SCALE: 1/4" = 1'-0"



**2 FLOOR PLAN - POWER**  
SCALE: 1/4" = 1'-0"

