

GAS FIRED EQUIPMENT SCHEDULE

TAG	DESCRIPTION	CFH
RTU-2	EXISTING ROOF TOP UNIT	292.5
RTU-3	EXISTING ROOF TOP UNIT	120
RTU-4	NEW ROOF TOP UNIT	150
RTU-5	NEW ROOF TOP UNIT	800
UH-1	EXISTING UNIT HEATER	250
GWH-1	EXISTING GAS WATER HEATER	200
	FUTURE WATER HEATER	200
FR-1	NEW FRYER	85
FR-1	NEW FRYER	85
RO-1	EXISTING RACK OVEN	300
CV-1	NEW CONVECTION OVEN	50
	EXISTING GENERATOR	400
	FUTURE COOKING	624
	FUTURE HVAC	300
	TOTAL CONNECTED GAS LOAD	3856.5

GAS LOAD (CFH)

EXISTING EQUIPMENT	LOAD (CFH)
HEATING	622.5
WATER HEATER	200
COOKING	644
GENERATOR	400
FUTURE HEATING	300
FUTURE COOKING	500
FUTURE WATER HEATER	200
TOTAL	2906.5

DEMOLISHED EQUIPMENT	LOAD (CFH)
COOKING	344
FUTURE COOKING	500
TOTAL	844

NEW EQUIPMENT	LOAD (CFH)
HEATING	950
COOKING	220
FUTURE COOKING	624
TOTAL	1794

NEW STORE LOAD TOTAL 3856.5
INCREASE IN LOAD 950

STORE LINE: 2 PSI SYSTEM AT 350' E.L.
(BASED ON TABLE 402.4(5) OF THE 2018 NC FUEL GAS CODE)

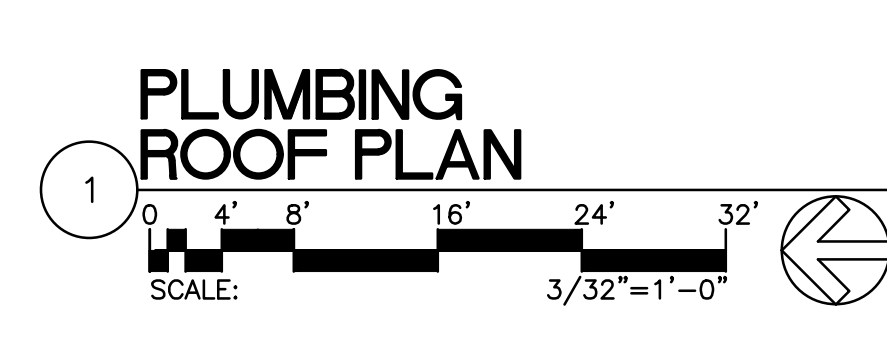
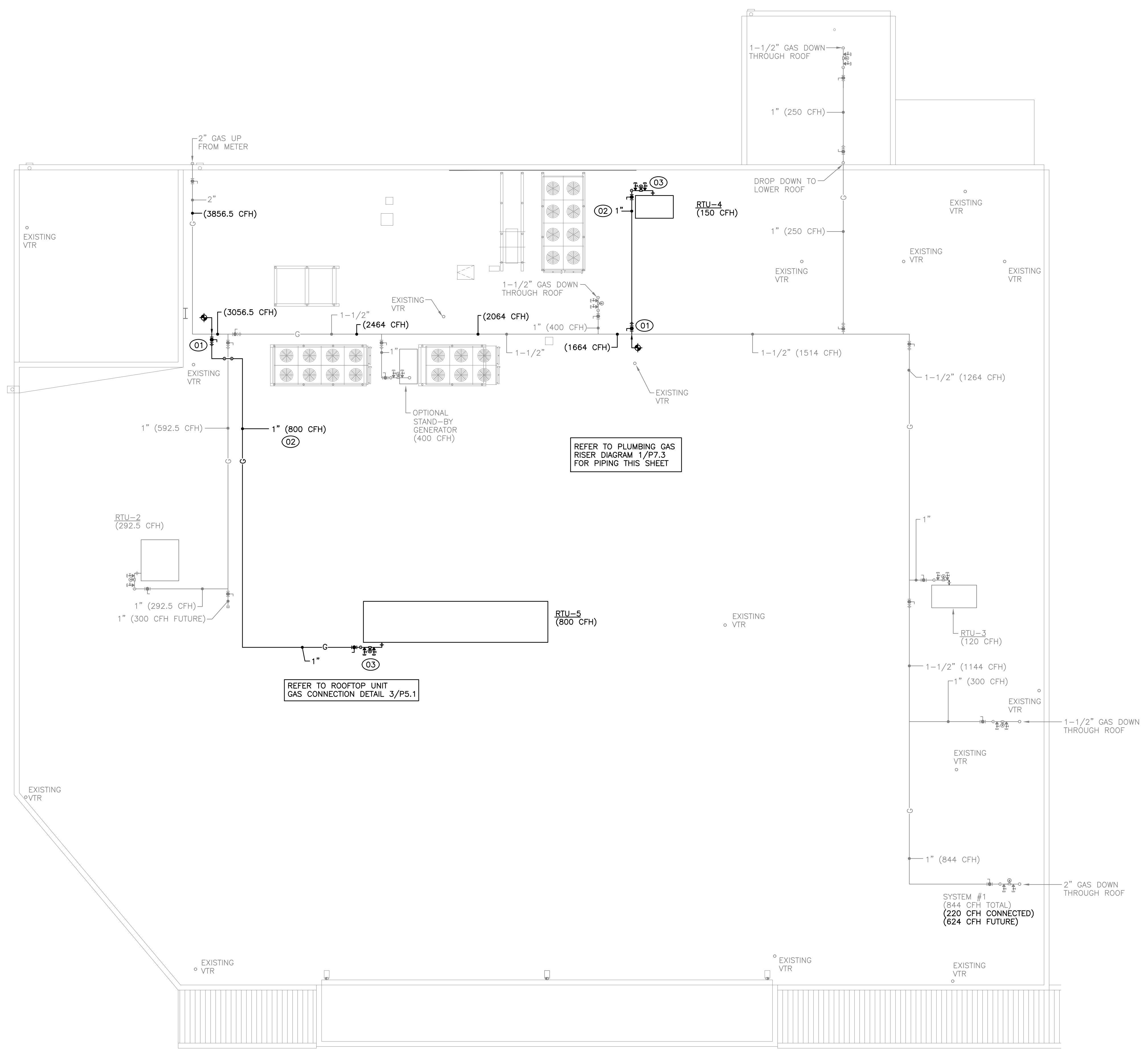
SYSTEM #1 E.L. 60' (BASED ON TABLE 402.4(1) OF THE 2018 NC FUEL GAS CODE)

KEYED NOTES

- 01 PROVIDE CLOSE NIPPLE, SHUT OFF VALVE AND UNION.
- 02 GAS PIPING ON ROOF SUPPORTED WITH BLOCKS AT 8'-0" ON CENTER. REFER TO DETAIL 4/PS.1.
- 03 PROVIDE GAS APPLIANCE REGULATOR WITH OPD AND TEST TEES SET AT 8" W.C. FOR CFH NOTED. PIPE RELIEF UP WITH RETURN BEND ON END OF DISCHARGE. REFER TO DETAIL 8/PS.1.

GENERAL NOTES

- REFER TO SHEET P.1.1 FOR ADDITIONAL GENERAL NOTES.
- ALL GAS CONNECTIONS TO EQUIPMENT SHALL HAVE UNIONS, SEDIMENT TRAPS AND GAS COCKS.
- PROVIDE TEES, VALVES AND CAP AT DISCHARGE OF EACH REGULATOR FOR MANOMETER CONNECTIONS TO VERIFY WATER COLUMN.
- PIPE DISCHARGE FROM REGULATOR A MINIMUM OF 10' AWAY FROM FRESH AIR INTAKE WITH RETURN BEND ON DISCHARGE.
- PIPE RELIEF FROM REGULATOR A MINIMUM OF 10' AWAY FROM SPARK IGNITION.
- LOCATE ALL VALVES FOR SERVICE ACCESSIBILITY.
- COORDINATE ALL EQUIPMENT CONNECTION LOCATIONS WITH OWNER AND FURNISHER OF EQUIPMENT PRIOR TO INSTALLATION.
- PROVIDE PIPING, EQUIPMENT AND MATERIALS IN ACCORDANCE WITH APPLICABLE PLUMBING CODE REGULATIONS AND STANDARDS, AUTHORITIES HAVING JURISDICTION, AND AS OTHERWISE RECOMMENDED OR DIRECTED BY MANUFACTURERS.
- PAINT ALL EXPOSED GAS PIPING ON ROOF, INCLUDING UNDERSIDE OF PIPING, WITH HIGH GLOSS YELLOW AND LABEL PIPING "STORE SUPPLY" WITH A NON-FLUORESCENT PAINT. (REFER TO ARCHITECTURAL DRAWINGS AND SPECIFICATION FOR ADDITIONAL REQUIREMENTS).
- THE PLUMBING CONTRACTOR SHALL REPAIR ALL HARRIS TEETER MAINTENANCE NOTED GAS PIPING LEAK LOCATIONS WHICH ARE IDENTIFIED WITH "RED" PAINT WITHIN THEIR BASE BID. THE PLUMBING CONTRACTOR SHALL NOTIFY THE HARRIS TEETER PROJECT MANAGER IF THERE ARE NO LOCATIONS NOTED ON THE EXISTING GAS PIPING AT LEAST ONE WEEK PRIOR TO THE BID DATE FOR VERIFICATION OF NO GAS LEAKS WITH HARRIS TEETER MAINTENANCE.
 1. THE ENTIRE GAS PIPING SYSTEM SHALL BE LEAK CHECKED BY THE PLUMBING CONTRACTOR AND WITNESSED BY OCHSNEREF, P.C. AT THE TIME OF PROJECT COMPLETION. ANY LEAKS IDENTIFIED SHALL BE PROMPTLY REPAIRED BY THE PLUMBING CONTRACTOR.
 2. REPAIR LEAKS AND DEFECTS WITH NEW MATERIALS AND RETEST SYSTEM UNTIL SATISFACTORY RESULTS ARE OBTAINED. VERIFICATION OF REPAIR OF ALL LEAKS TO BE DONE PRIOR TO REPAINTING OF THE GAS PIPING.
 3. REPORT TEST RESULTS PROMPTLY AND IN WRITING TO HARRIS TEETER, ARCHITECT AND AUTHORITIES HAVING JURISDICTION.
- ALL GAS REGULATORS TO COMPLY WITH ANSI Z21.80.



NOTE: THIS DOCUMENT MAY HAVE BEEN ELECTRONICALLY TRANSMITTED. IF UNSIGNED, IT CANNOT BE FILED FOR PUBLIC RECORD. PUBLIC RECORD FILINGS REQUIRE SIGNED AND SEALED DOCUMENTS.

PROJECT MANAGER:	
KIM STACY	
JOB NO.:	
20-0241-02	
DR. BY:	
EL6	
REVISIONS	
No.	Date