

PROJECT MANAGER:
 KENDY STACY
 JOB NO.:
 20-01241-02
 DR. BY:
 HWY
 REVISIONS:

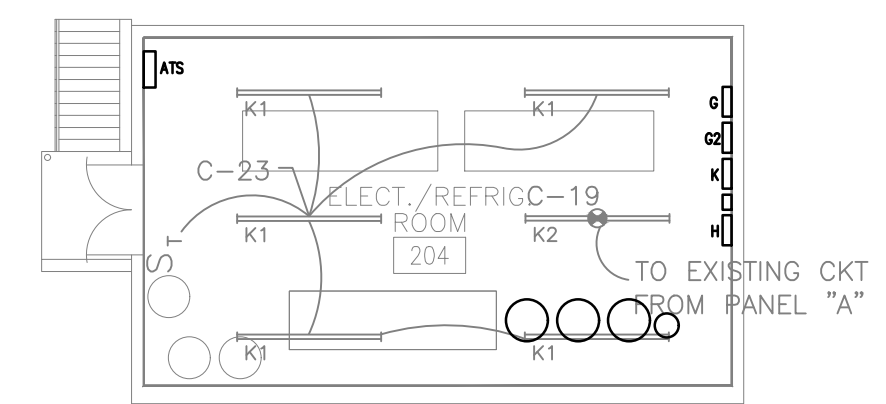
No.	Date


GENERAL NOTES

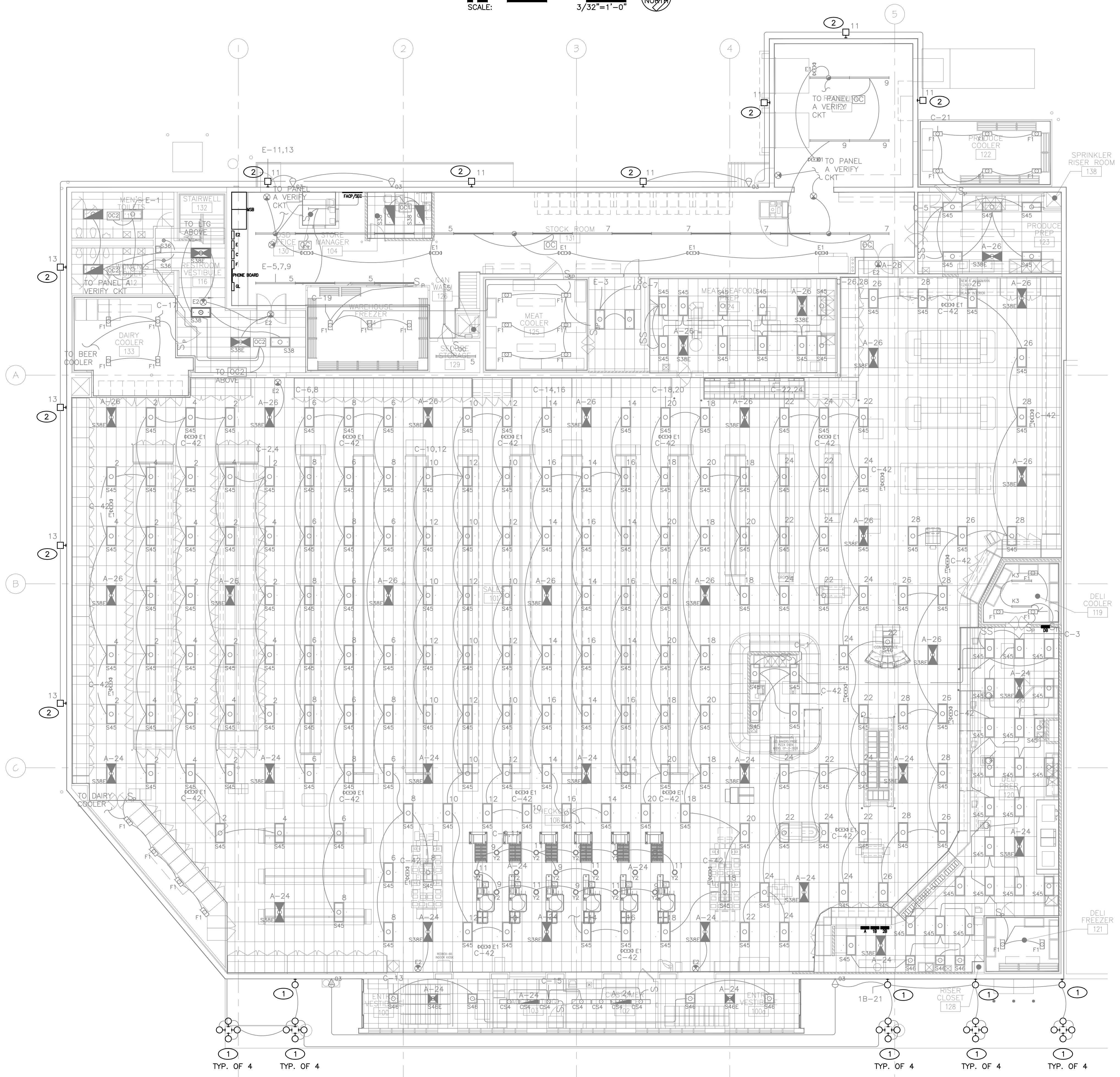
- EXISTING LIGHTING AS BASED ON EXISTING DOCUMENTS AND FIELD OBSERVATIONS. THE E.C. SHALL FIELD VERIFY ALL INFORMATION PRIOR TO BEGINNING WORK. BRING ANY DISCREPANCIES TO THE ENGINEERS ATTENTION FOR DISPOSITION.
- THE E.C. MAY REUSE EXISTING WIRING IN PLACE PROVIDED IT IS IN GOOD CONDITION AND MEETS THE REQUIREMENTS OF THE NEW CIRCUITS AS SHOWN ON E2.1 AND E2.2.
- MAINTAIN CONTINUITY TO CIRCUITS OR PORTIONS OF CIRCUITS FOR LIGHTING THAT IS EXISTING TO REMAIN. REFEED AS REQUIRED.
- LIGHTING AND WIRING SHOWN IN GRAYSCALE IS EXISTING TO REMAIN UNLESS OTHERWISE NOTED.


KEY NOTES **XX**

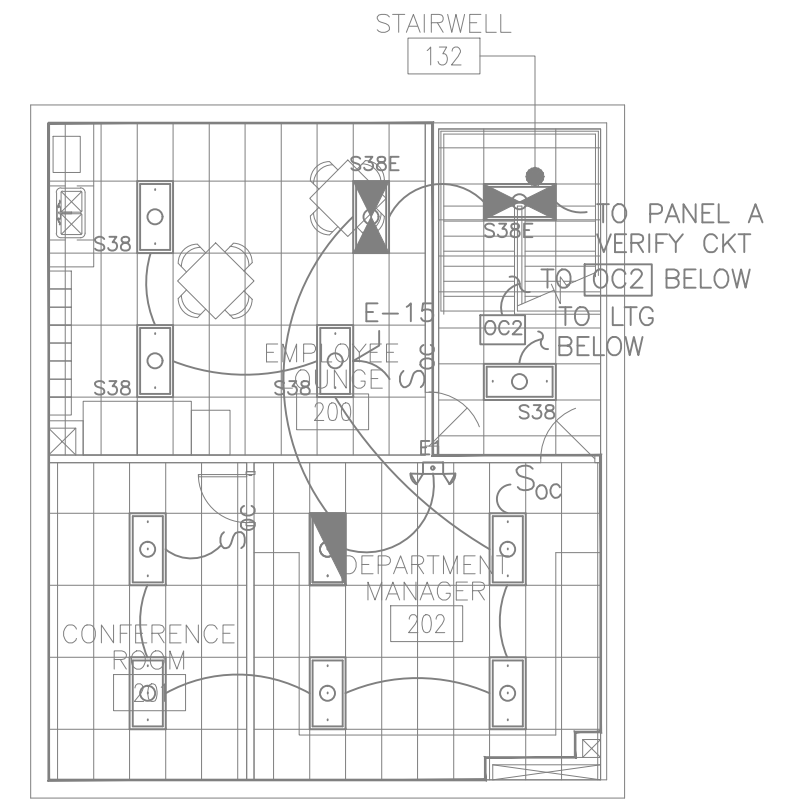
- DISCONNECT AND REMOVE DECORATIVE WALL MOUNTED FIXTURE. PRESERVE CIRCUIT AND RECONNECT TO NEW LED DECORATIVE WALL FIXTURES AS SHOWN ON E3.1.
- DISCONNECT AND REMOVE WALL MOUNTED FIXTURE. PRESERVE CIRCUIT AND RECONNECT TO NEW LED WALL MOUNTED FIXTURE AS SHOWN ON E3.1.




3 ELEC. / REF. RM PLAN
 SCALE: 3/32"=1'-0"




1 LIGHTING DEMOLITION PLAN
 SCALE: 3/32"=1'-0"




2 REAR MEZZANINE PLAN
 SCALE: 3/32"=1'-0"


NOTE: THIS DOCUMENT MAY HAVE BEEN ELECTRONICALLY TRANSMITTED. IF UNSIGNED, IT CANNOT BE FILED FOR PUBLIC RECORD. PUBLIC RECORD FILINGS REQUIRE SIGNED AND SEALED DOCUMENTS.