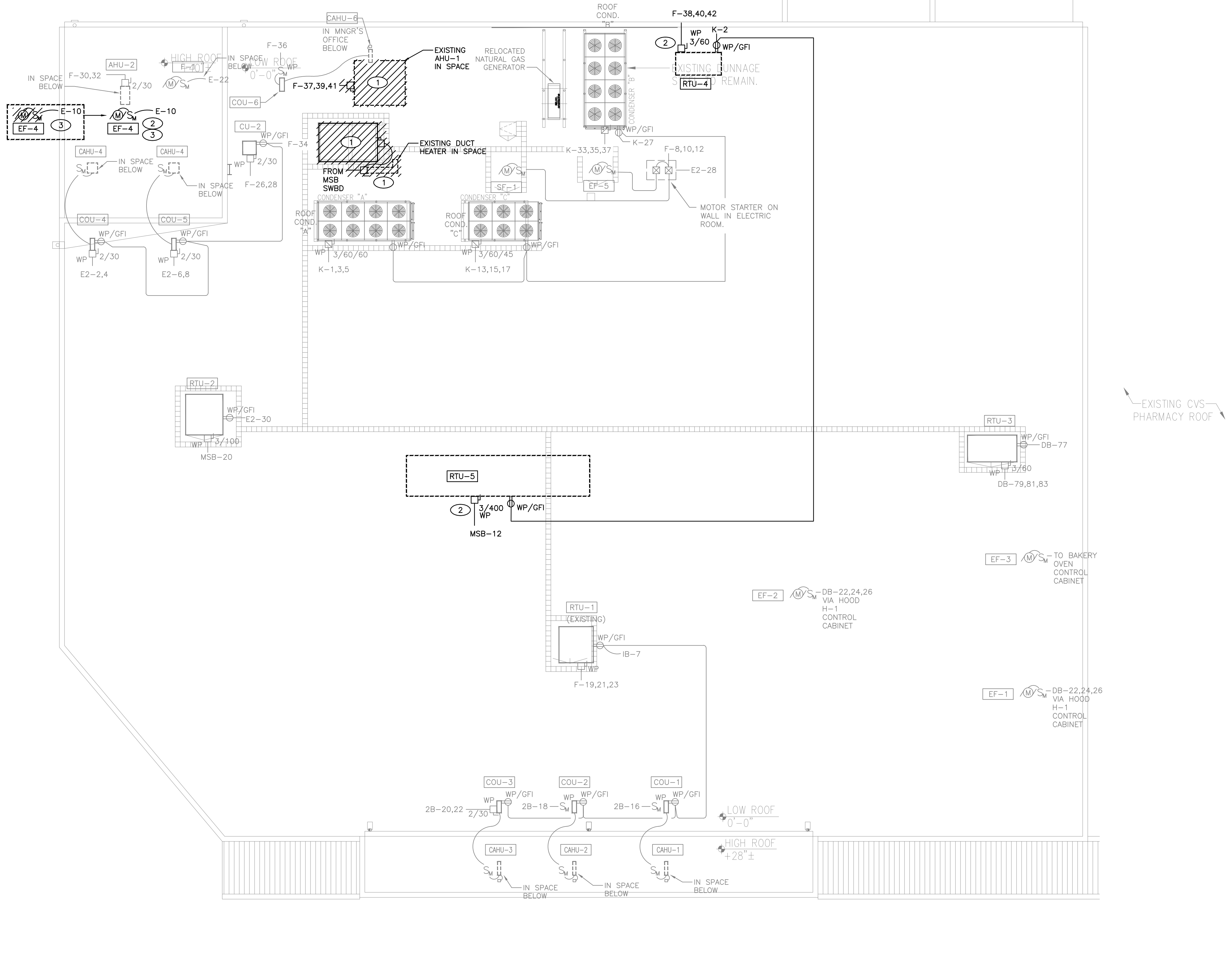


- GENERAL NOTES:**
1. CIRCUITS ARE EXISTING TO REMAIN AND SHOWN IN GRAYSCALE UNLESS NOTED OTHERWISE.
 2. EXISTING CONDITIONS SHOWN ARE BASED ON EXISTING DRAWINGS AND MAY NOT BE COMPLETE OR ALL INCLUSIVE OF THE CIRCUITS OR DEVICES TO BE DEMOLISHED OR RELOCATED. THE ELECTRICAL CONTRACTOR SHALL SURVEY THE EXISTING CONDITIONS TO DETERMINE THE EXTENT OF THE RENOVATION AND DETERMINE WHAT CONDUIT, WIRING, DEVICES, ETC. MAY BE REUSED IN PLACE FOR THE RENOVATION WORK TO BE PERFORMED.
 3. EXISTING CONDUIT AND WIRING THAT IS REUSED MUST BE IN GOOD CONDITION AND MEET THE REQUIREMENTS OF THE CIRCUIT OR EQUIPMENT AS INDICATED ON THE RENOVATION PLANS AND PANEL SCHEDULES.
 4. VERIFY EQUIPMENT REQUIREMENTS WITH MECHANICAL CONTRACTOR PRIOR TO ROUGH-IN OF CIRCUITS.
 5. EQUIPMENT SHALL BE PROTECTED BASED ON THE NAMEPLATE MAXIMUM OVERCURRENT PROTECTION DEVICE RATING.
 6. COORDINATE WITH ENERGY MANAGEMENT SYSTEM DRAWINGS AND MECHANICAL CONTRACTOR FOR ADDITIONAL CONDUIT AND WIRING REQUIREMENTS.

- KEY NOTES: #**
1. DISCONNECT FEEDS FROM AHU-1, AHU-1 ROOFTOP CONDENSING UNIT AND DUCT HEATER TO ALLOW FOR REMOVAL OF EQUIPMENT. REMOVE ALL ASSOCIATED CONDUIT AND WIRING BACK TO SOURCE.
 2. UNIT DISCONNECT PROVIDED WITH THE EQUIPMENT BY THE EQUIPMENT MANUFACTURER.
 3. DISCONNECT WIRING FROM EXHAUST FAN TO BE REPLACED. PRESERVE WIRING AND RECONNECT TO NEW EXHAUST FAN AS REQUIRED.



ROOF POWER RENOVATION PLAN
SCALE: 3/32"=1'-0"

NOTE: THIS DOCUMENT MAY HAVE BEEN ELECTRONICALLY TRANSMITTED. IF UNSIGNED, IT CANNOT BE FILED FOR PUBLIC RECORD. PUBLIC RECORD FILINGS REQUIRE SIGNED AND SEALED DOCUMENTS.