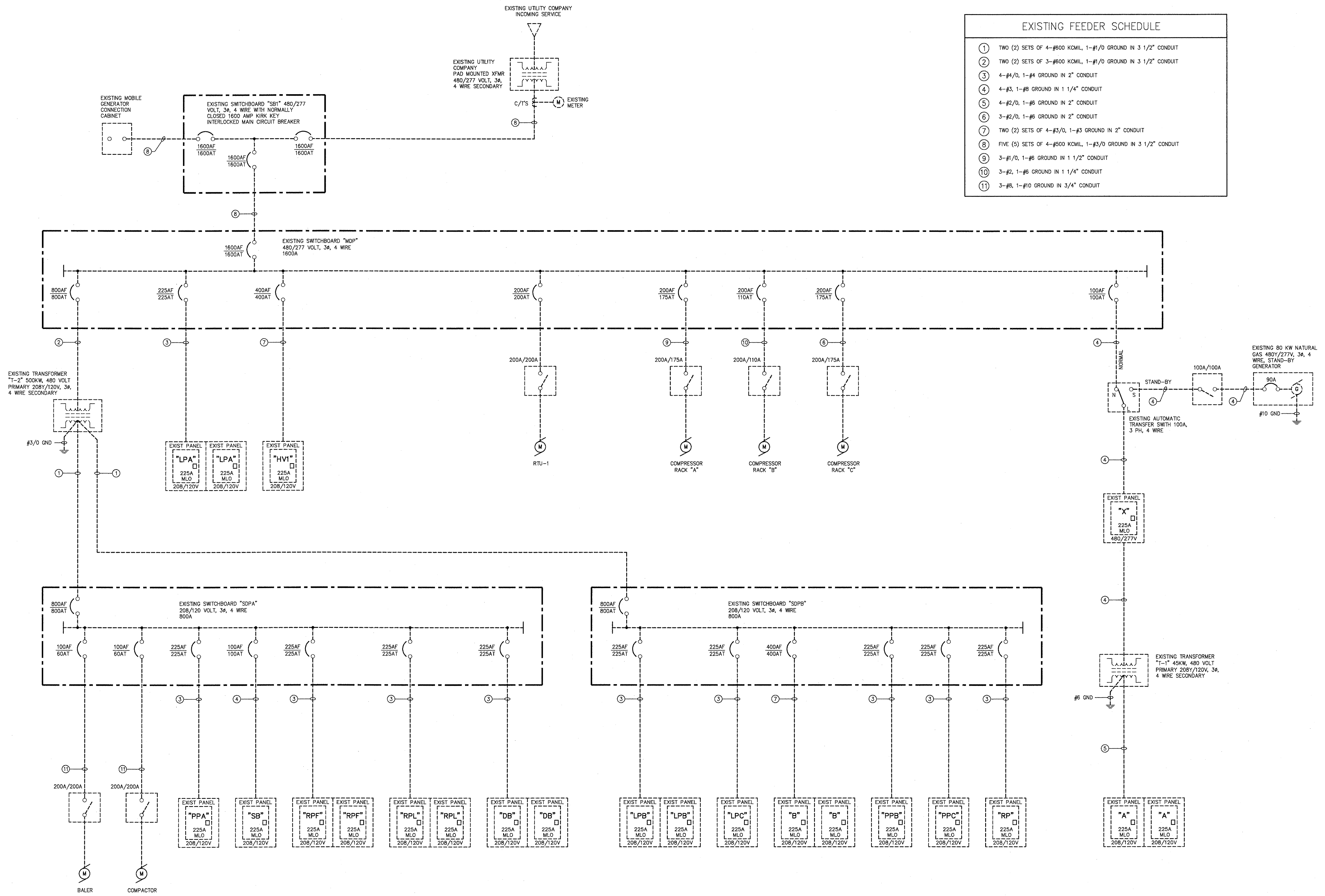


EXISTING FEEDER SCHEDULE	
①	TWO (2) SETS OF 4-#600 KCMIL, 1-#1/0 GROUND IN 3 1/2" CONDUIT
②	TWO (2) SETS OF 3-#600 KCMIL, 1-#1/0 GROUND IN 3 1/2" CONDUIT
③	4-#4/0, 1-#4 GROUND IN 2" CONDUIT
④	4-#3, 1-#6 GROUND IN 1 1/4" CONDUIT
⑤	4-#2/0, 1-#6 GROUND IN 2" CONDUIT
⑥	3-#2/0, 1-#6 GROUND IN 2" CONDUIT
⑦	TWO (2) SETS OF 4-#3/0, 1-#3 GROUND IN 2" CONDUIT
⑧	FIVE (5) SETS OF 4-#500 KCMIL, 1-#3/0 GROUND IN 3 1/2" CONDUIT
⑨	3-#1/0, 1-#6 GROUND IN 1 1/2" CONDUIT
⑩	3-#2, 1-#6 GROUND IN 1 1/4" CONDUIT
⑪	3-#8, 1-#10 GROUND IN 3/4" CONDUIT



POWER RISER DIAGRAM GENERAL NOTE:
RISER DIAGRAM EXISTING TO REMAIN. SHOWN FOR INFORMATIONAL PURPOSES ONLY.

1
EXISTING CONDITIONS
POWER RISER - DIAGRAM
DIAGRAMATIC