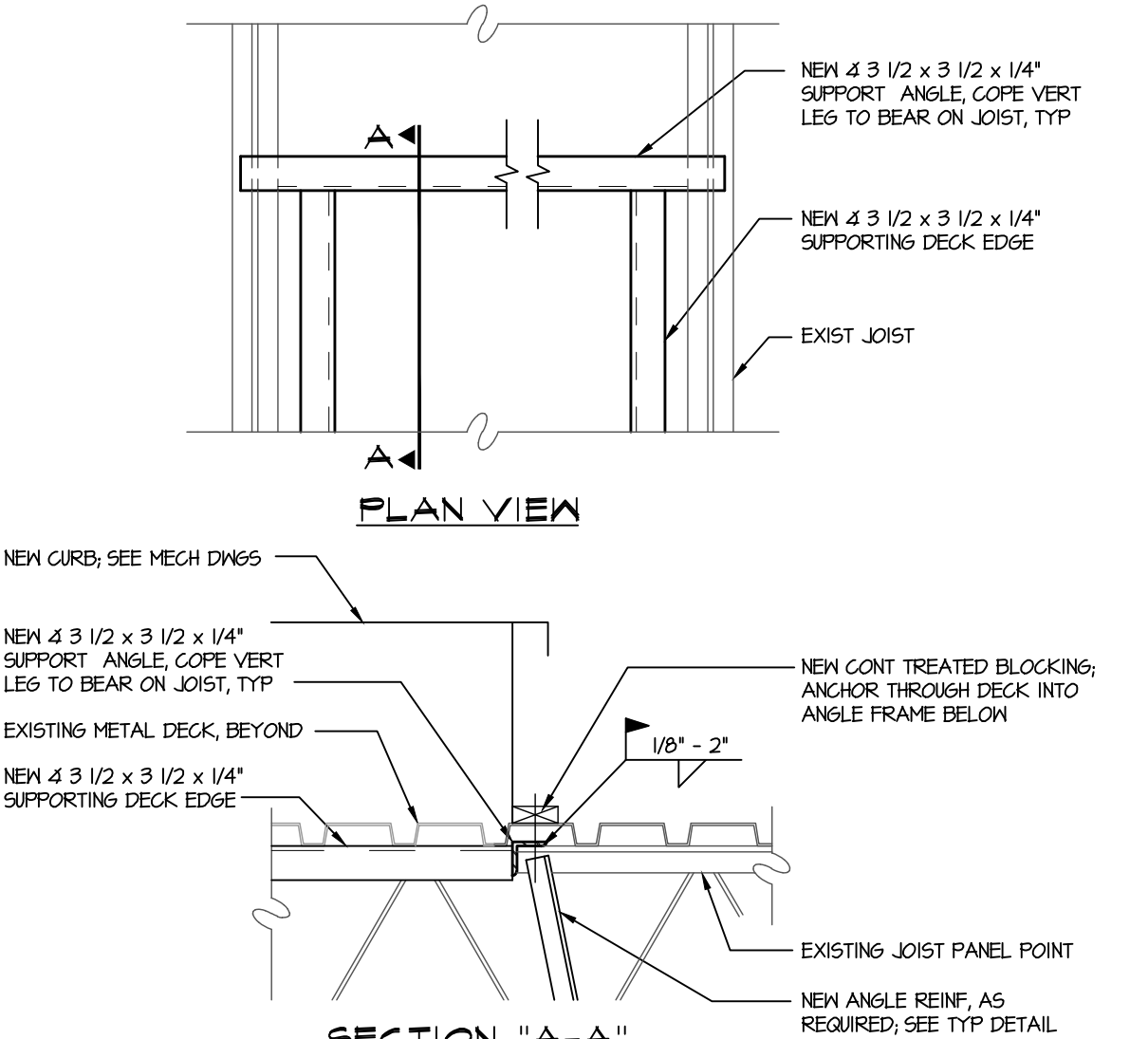
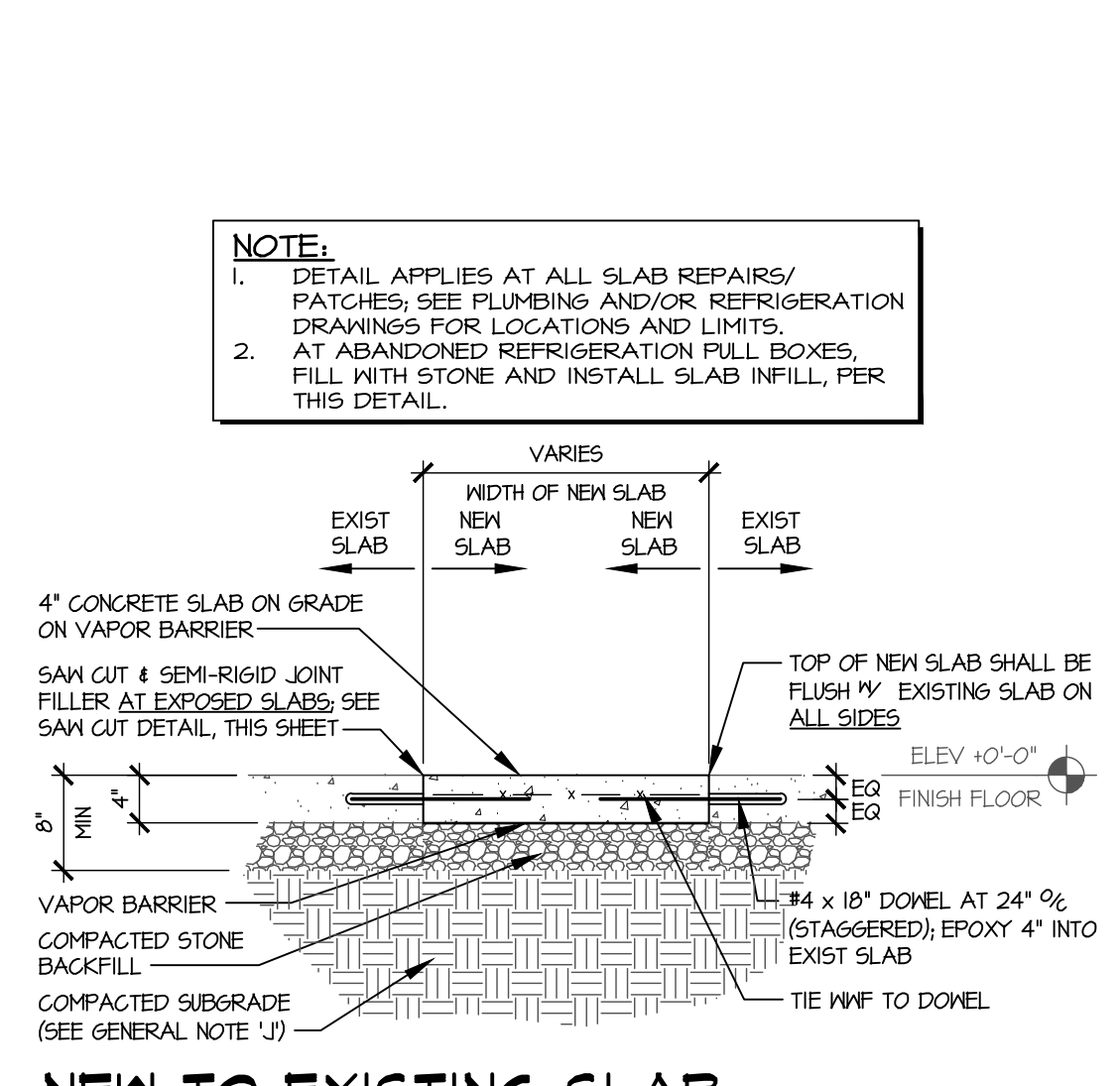


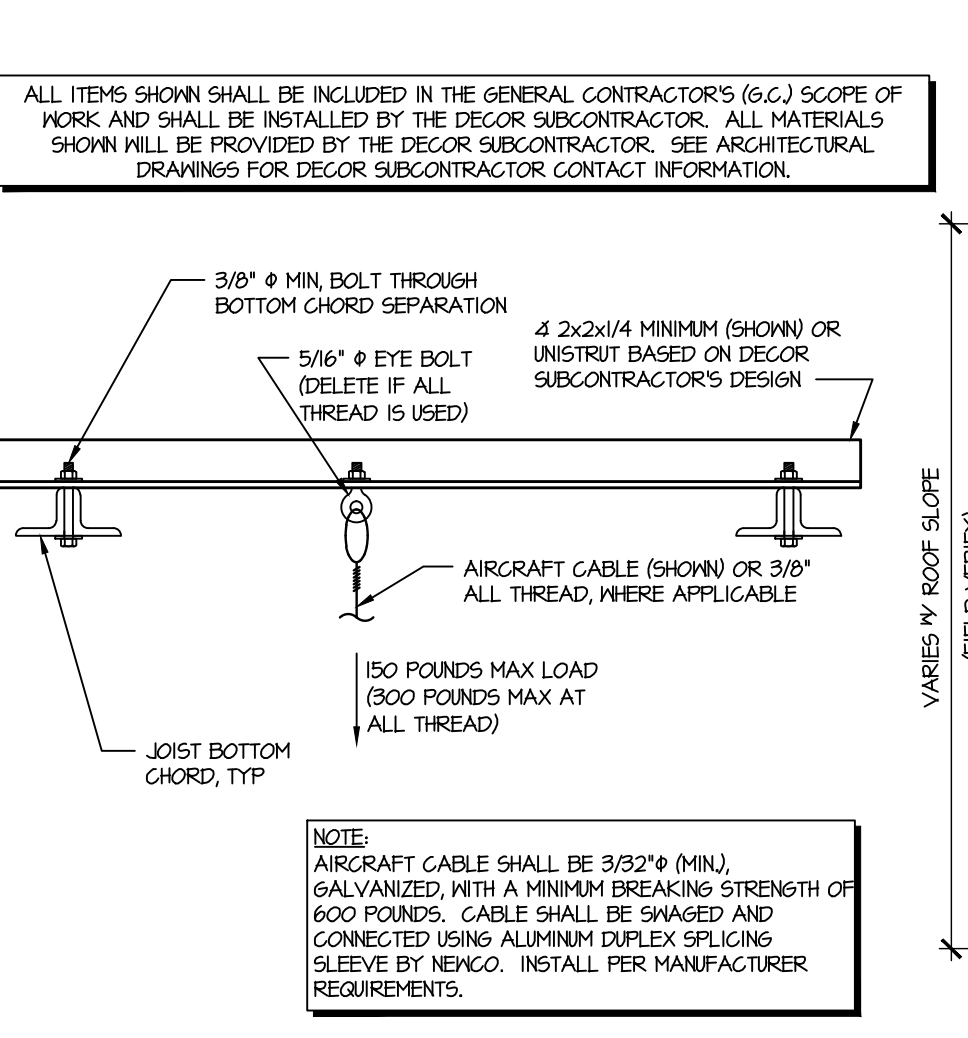
TYPICAL REINFORCED JOIST DETAIL
SCALE: NOT TO SCALE



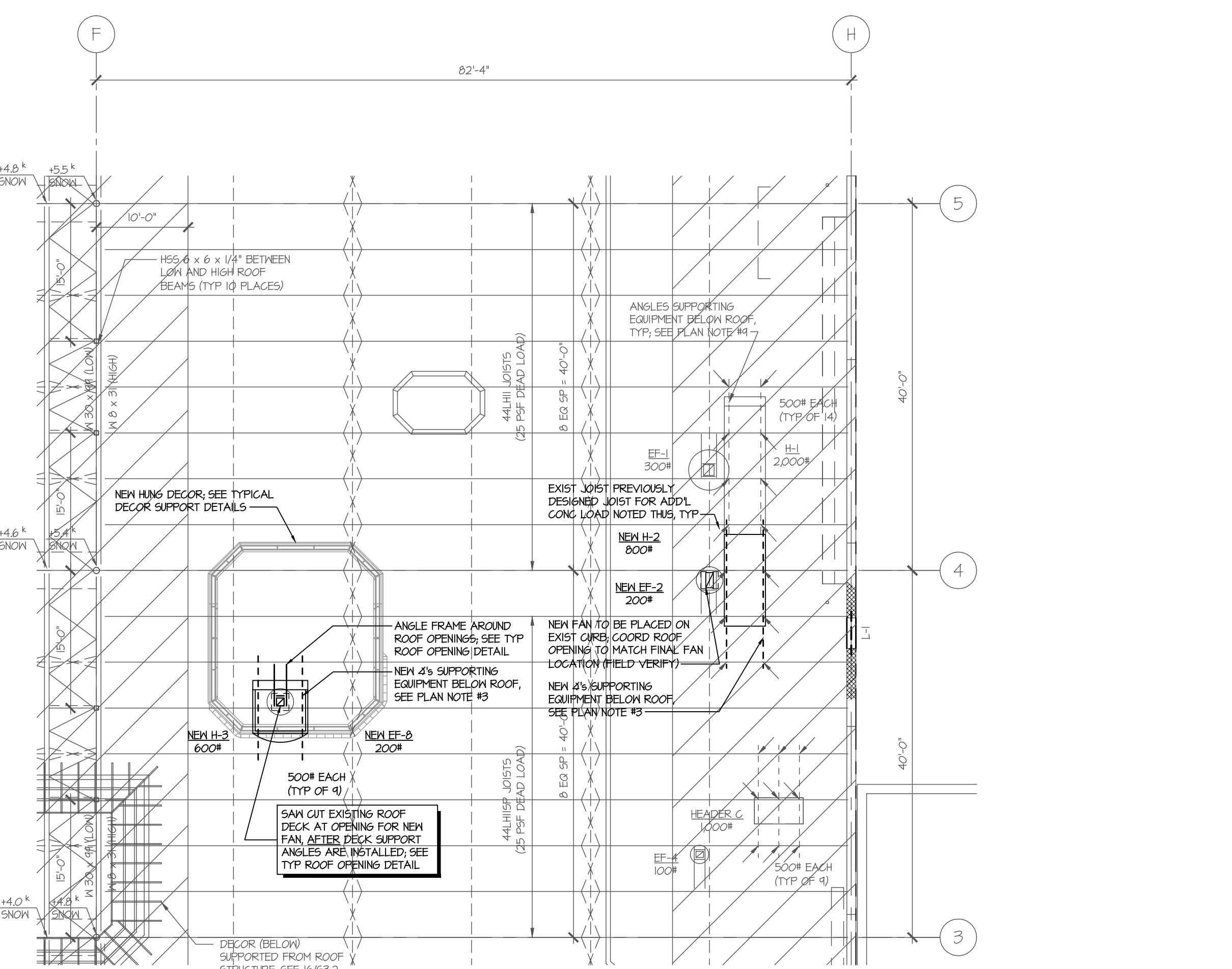
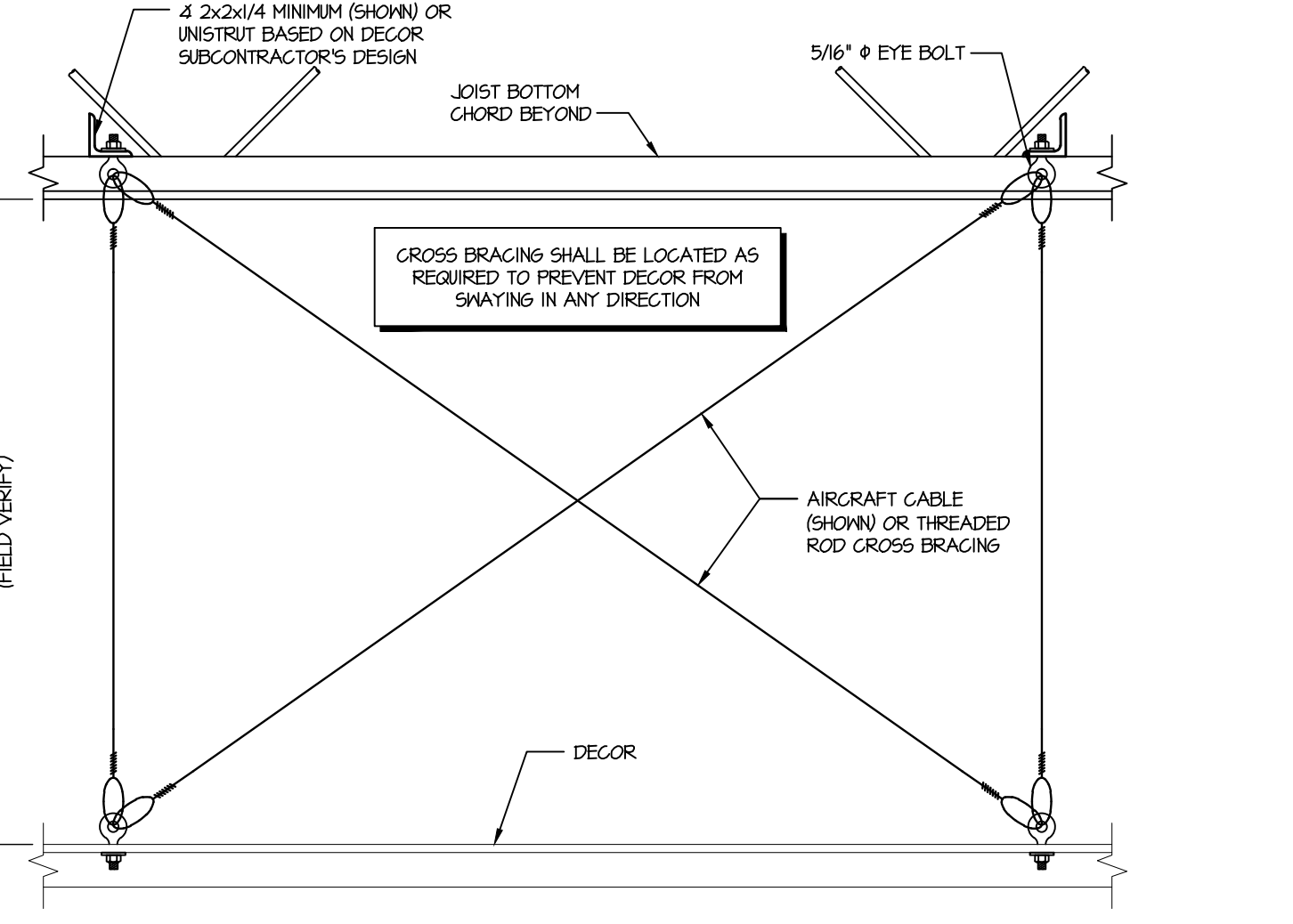
TYP ROOF OPENING DETAIL
SCALE: NOT TO SCALE



DETAIL AT TRENCHES
SCALE: 3/4" = 1'-0"



TYPICAL DECOR SUPPORT DETAILS
SCALE: NOT TO SCALE



PARTIAL EXISTING ROOF FRAMING PLAN
SCALE: 3/32" = 1'-0"

THIS EXISTING ROOF FRAMING PLAN WAS CREATED FROM DRAWINGS PREPARED BY BONDURANT ASSOCIATES ENGINEERING AND ARCHITECTURE, DATED 06/16/2008.

PRIOR TO THE START OF ANY WORK OR FABRICATION OF MATERIALS, FIELD VERIFY ALL EXISTING CONDITIONS, INCLUDING DIMENSIONS AND ELEVATIONS, WHETHER EXPOSED TO VIEW OR NOT. IF DISCREPANCIES ARE FOUND, CONTACT THE ARCHITECT / ENGINEER FOR ADDITIONAL DIRECTION.

GENERAL WORK NOTES:

1. ALL NEW STEEL SHALL BE SHOP PRIMED AND PAINTED W/ 2 COATS ALKYLID ENAMEL.
2. IF NEW ROOF PENETRATIONS ARE REQUIRED, PROVIDE FLASHINGS AND ROOF REPAIRS TO MAKE WEATHERTIGHT. THEY SHALL BE IN ACCORDANCE WITH THE ROOF MANUFACTURER'S REQUIREMENTS. PROVIDE PRE AND POST WORK INSPECTIONS BY ROOFING MANUFACTURER TO INSURE THAT WARRANTIES ARE MAINTAINED.
3. COORDINATE REMOVAL AND REPLACEMENT OF EQUIPMENT AND SUPPORT STEEL W/ STORE MANAGER TO MINIMIZE DISRUPTION TO STORE OPERATION.
4. ALL NEW STEEL PLACEMENT AND WELDING SHALL BE EXAMINED AND CERTIFIED BY AN INDEPENDENT TESTING LAB. COPIES OF THESE REPORTS SHALL BE SUBMITTED TO HARRIS TEETER AND BONDURANT ASSOCIATES FOR REVIEW.

PLAN NOTES:

1. WHEN REQUIRED, NEW AND REPLACEMENT ROOF DECK (FIELD VERIFY, PROFILE MATCHES EXISTING) SHALL BE 1/2", 10 GAUGE WIDE RIB, PAINTED STEEL IN ACCORDANCE WITH THE S.D.I. AND THESE DRAWINGS & SPECIFICATIONS, AND SHALL BE MECHANICALLY FASTENED W/ #12 TEK SCREWS, AS FOLLOWS:
 - A. EACH RIB (6" @) AT EACH SUPPORT W/ 3 - #12 SIDE LAP STITCH SCREWS EQUALLY SPACED WITHIN THE HATCHED AREAS.
2. PROVIDE 4 3" x 3" x 1/4" (MIN, UNLESS OTHERWISE NOTED) FRAME AROUND ALL ROOF OPENINGS LARGER THAN 8" SQUARE (ALL OPENINGS NOT SHOWN); COORDINATE SIZE, LOCATION AND NUMBER OF OPENINGS WITH ARCH, MECH, ELEC, ETC. DRAWINGS AND VERIFY WITH OWNER. WHERE DUCTWORK, FIXTURES AND/OR EQUIPMENT BELOW ROOF DECK CONFLICT WITH LATERAL BRIDGING, DISCONTINUE AND PROVIDE "X" BRIDGING BETWEEN JOISTS ON EACH SIDE OF BRIDGING INTERRUPTION. SEE TYPICAL ROOF OPENING DETAIL.
3. WHERE EQUIPMENT OR ITS SUPPORTING MEMBERS BEAR ON OR ARE HUNG (PROVIDE 4 4" x 4" x 5/16" MIN (U.O.N.) SPANNING BETWEEN JOISTS) FROM JOISTS AT A LOCATION OTHER THAN A TOP OR BOTTOM CHORD PANEL POINT, REINFORCE JOIST PER TYP REINF JOIST DETAIL THIS SHEET.
4. STRUCTURAL STEEL PIPE SHALL CONFORM TO ASTM A53 TYPE "E" OR "S". GRADE B AND STEEL TUBING SHALL CONFORM TO ASTM A500, GRADE B. WIDE FLANGE SHAPES SHALL CONFORM TO ASTM A572, GRADE 50. ALL OTHER SHAPES A36 - STRUCTURAL STEEL SHALL BE IN ACCORDANCE WITH THE AISC "MANUAL OF STEEL CONSTRUCTION" (LATEST EDITION).
5. ALL WELDING SHALL BE IN ACCORDANCE WITH THE AWS "STRUCTURAL WELDING CODE" D1.1 (LATEST EDITION), USING E70XX ELECTRODES, U.O.N.
6. NO PIPE, CONDUIT, OR EQUIPMENT SHALL BE SUPPORTED FROM JOIST BRIDGING OR METAL DECK; PROVIDE INDEPENDENT SUPPORT MEMBER (SIZED BY CONTRACTOR) ATTACHED AT JOIST PANEL POINT.
7. THE EXISTING ROOF STRUCTURE, AS SHOWN AND / OR MODIFIED, IS ADEQUATE TO SUPPORT THE NEW EQUIPMENT SHOWN BASED ON THE WEIGHTS NOTED, IF THE PROPOSED UNIT WEIGHTS EXCEED THESE AMOUNTS OR ARE RELOCATED, NOTIFY THE STRUCTURAL ENGINEER TO EVALUATE THE ADEQUACY OF THE EXISTING STRUCTURE PRIOR TO ORDERING THE UNITS.
 - A. SLAB-ON-GRADE: 100 psf
 - B. ROOF DEAD LOAD: 25 psf
 - C. ROOF LIVE LOAD: 20 psf
 - D. SNOW LOAD DESIGN DATA):
 1. GROUND SNOW LOAD, P_g = 10 psf
 2. FLAT-ROOF SNOW LOAD, P_f = 12 psf
 3. SNOW LOAD IMPORTANCE FACTOR, I_s = 1.0
 - E. WIND LOAD DESIGN DATA
 1. BASIC WIND SPEED: 130 mph (3-SECOND GUST)
 2. WIND IMPORTANCE FACTOR, I_w = 1.0
 3. WIND EXPOSURE CATEGORY C
8. STRUCTURAL LOADS & CAPACITIES USED IN DESIGN OF THIS STRUCTURE ARE AS FOLLOWS:
 - A. SLAB-ON-GRADE: 100 psf
 - B. ROOF DEAD LOAD: 25 psf
 - C. ROOF LIVE LOAD: 20 psf
 - D. SNOW LOAD DESIGN DATA):
 1. GROUND SNOW LOAD, P_g = 10 psf
 2. FLAT-ROOF SNOW LOAD, P_f = 12 psf
 3. SNOW LOAD IMPORTANCE FACTOR, I_s = 1.0
 - E. WIND LOAD DESIGN DATA
 1. BASIC WIND SPEED: 130 mph (3-SECOND GUST)
 2. WIND IMPORTANCE FACTOR, I_w = 1.0
 3. WIND EXPOSURE CATEGORY C

GENERAL CONSTRUCTION SEQUENCE GUIDELINES

1. PRIOR TO BIDDING AND THE START OF CONSTRUCTION, THE CONTRACTOR SHALL VISIT THE SITE TO VERIFY EXISTING CONDITIONS.
2. THE ORDER AND SEQUENCE OF ALL DEMOLITION AND NEW WORK SHALL BE COORDINATED AND FINALIZED WITH HARRIS TEETER'S PROJECT MANAGER PRIOR TO THE START OF ANY WORK.
3. SHIFT/ RELOCATE EXISTING EQUIPMENT IF REQUIRED, AND CONSTRUCT TEMPORARY BARRICADES TO ALLOW DEMOLITION WORK.
4. TIMING AND SEQUENCE OF ALL DEMOLITION AND NEW WORK SHALL BE AS DETERMINED BY THE HARRIS TEETER PROJECT MANAGER.

DEMOLITION GENERAL NOTES

- A. IT IS THE INTENT OF HARRIS TEETER TO MAINTAIN OPERATIONS AND REMAIN OPEN DURING DEMOLITION AND CONSTRUCTION. TENANTS IN OTHER PORTIONS OF THE CENTER WILL ALSO MAINTAIN NORMAL OPERATIONS. CONTRACTOR SHALL SCHEDULE AND CONDUCT ALL ACTIVITIES IN A MANNER TO MINIMIZE DISRUPTIONS OF ONGOING OPERATIONS AND BUSINESS.
- B. PROVIDE ALL NECESSARY DEMOLITION WORK AS REQUIRED TO PROVIDE THE NEW WORK SHOWN. DEMOLITION WORK WHICH HAS NOT BEEN IDENTIFIED SHALL BE PROVIDED AS REQUIRED TO INSURE THE COMPLETE SCOPE OF NEW WORK SHOWN.
- C. IDENTIFY AND PROTECT DURING DEMOLITION OPERATIONS ALL UTILITIES, SYSTEMS & EQUIPMENT WHICH MUST REMAIN IN SERVICE.
- D. ITEMS INDICATED TO BE REMOVED BUT OF SALVAGEABLE VALUE TO CONTRACTOR MAY BE REMOVED FROM STRUCTURE AS WORK PROGRESSES. TRANSPORT SALVAGED ITEMS FROM SITE AS THEY ARE REMOVED. STORAGE OR SALE OF REMOVED ITEMS ON SITE WILL NOT BE PERMITTED.
- E. PROVIDE TEMPORARY BARRICADES AND OTHER FORMS OF PROTECTION TO PROTECT OWNER'S PERSONNEL AND GENERAL PUBLIC FROM INJURY DUE TO SELECTIVE DEMOLITION WORK.
 1. PROTECT FROM DAMAGE EXISTING FINISH WORK THAT IS TO REMAIN IN PLACE AND BECOMES EXPOSED DURING DEMOLITION OPERATIONS.
 2. REMOVE PROTECTIONS AT COMPLETION OF WORK.
- F. DO NOT USE CUTTING TORCHES FOR REMOVAL UNTIL WORK AREA IS CLEARED OF FLAMMABLE MATERIALS. AT CONCEALED SPACES, SUCH AS ROOFING SYSTEMS AND INTERIOR OF DUCTS AND PIPE SPACES, VERIFY CONDITION OF HIDDEN SPACE BEFORE STARTING FLAME-CUTTING OPERATIONS. MAINTAIN PORTABLE FIRE SUPPRESSION DEVICES DURING FLAME-CUTTING OPERATION.
- G. DEMOLISH CONCRETE IN SMALL SECTIONS. CUT CONCRETE AT JUNCTIONS WITH CONSTRUCTION TO REMAIN USING POWER-DRIVEN SAW OR HAND TOOLS; DO NOT USE POWER-DRIVEN IMPACT TOOLS.
- H. PROVIDE SERVICES FOR EFFECTIVE AIR AND WATER POLLUTION CONTROLS AS REQUIRED BY LOCAL AUTHORITIES HAVING JURISDICTION.
- I. COMPLETELY FILL BELOW-GRADE AREAS AND VOIDS RESULTING FROM DEMOLITION WORK. PROVIDE FILL CONSISTING OF APPROVED EARTH, GRAVEL, OR SAND, FREE OF TRASH AND DEBRIS, STONES OVER 2 INCHES IN DIAMETER, ROOTS, OR OTHER ORGANIC MATTER. COMPACT TO NOT LESS THAN 98 PERCENT OF MAXIMUM DRY DENSITY PER ASTM D698 STANDARD PROCTOR.
- K. IF UNANTICIPATED MECHANICAL, ELECTRICAL, OR STRUCTURAL ELEMENTS THAT CONFLICT WITH INTENDED FUNCTION OR DESIGN ARE ENCOUNTERED, INVESTIGATE AND MEASURE BOTH NATURE AND EXTENT OF THE CONFLICT. SUBMIT REPORT TO THE ENGINEER IN WRITTEN, ACCURATE DETAIL. FENDING RECEIPT OF DIRECTIVE FROM ENGINEER, REARRANGE SELECTIVE DEMOLITION SCHEDULE AS NECESSARY TO CONTINUE OVERALL JOB PROGRESS WITHOUT UNDUE DELAY.
- L. REMOVE FROM BUILDING SITE DEBRIS, RUBBISH, AND OTHER MATERIALS RESULTING FROM DEMOLITION OPERATIONS. TRANSPORT AND LEGALLY DISPOSE OFF SITE.
- M. COMPLY WITH APPLICABLE REGULATIONS, LAWS, AND ORDINANCES CONCERNING REMOVAL, HANDLING, AND PROTECTION AGAINST EXPOSURE OR ENVIRONMENTAL POLLUTION.
- N. EXISTING SITE HAS NOT BEEN TESTED FOR HAZARDOUS MATERIALS. ALL MATERIAL AND EQUIPMENT REMOVED BECOMES THE PROPERTY OF THE CONTRACTOR (HAZARDOUS OR NON-HAZARDOUS). THE CONTRACTOR SHALL DETERMINE IF HAZARDOUS AND MUST DISPOSE OF MATERIAL IN ACCORDANCE WITH LOCAL AND/OR FEDERAL REGULATIONS.
- O. UPON COMPLETION OF DEMOLITION WORK, REMOVE TOOLS, EQUIPMENT, AND DEMOLISHED MATERIALS FROM SITE. REMOVE PROTECTIONS AND LEAVE INTERIOR AREAS BROOM CLEAN. REPAIR DEMOLITION PERFORMED IN EXCESS OF THAT REQUIRED. RETURN ELEMENTS OF CONSTRUCTION AND SURFACES TO REMAIN TO CONDITION EXISTING PRIOR TO START OPERATIONS. REPAIR ADJACENT CONSTRUCTION OR SURFACES SOILED OR DAMAGED BY SELECTIVE DEMOLITION WORK.
- P. PROVIDE TEMPORARY WEATHERTIGHT ENCLOSURES OR FLASHINGS AS REQUIRED TO PROTECT CONCEALED CONSTRUCTION AND STORE OPERATIONS FROM OUTSIDE ELEMENTS DUE TO ANY DEMOLITION WORK. SEQUENCE DEMOLITION WORK WITH NEW WORK PROPERLY SO THAT EXPOSURE OF EXISTING CONCEALED CONSTRUCTION TO REMAIN IS MINIMIZED.
- R. MAINTAIN EXISTING UTILITIES REQUIRED TO REMAIN IN SERVICE AND PROTECT THEM AGAINST DAMAGE DURING DEMOLITION OPERATIONS.
 1. DO NOT INTERRUPT UTILITIES SERVING OCCUPIED OR USED FACILITIES, EXCEPT WHEN AUTHORIZED IN WRITING BY AUTHORITIES HAVING JURISDICTION. PROVIDE TEMPORARY SERVICES DURING INTERRUPTIONS TO EXISTING UTILITIES, AS ACCEPTABLE TO GOVERNING AUTHORITIES.
 2. LOCATE, IDENTIFY, SHUT OFF, AND DISCONNECT UTILITY SERVICES THAT ARE NOT INDICATED TO REMAIN. PROVIDE BYPASS CONNECTIONS AS NECESSARY TO MAINTAIN CONTINUITY OF SERVICE TO OCCUPIED AREAS OF BUILDING. PROVIDE MINIMUM OF 12 HOURS ADVANCE NOTICE TO OWNER IF SHUTDOWN OF SERVICE IS NECESSARY DURING CHANGEOVER.

ARCONS DESIGN STUDIO
architecture planning interiors
10550 Independence Pointe Parkway Suite 300
Matthews, North Carolina 28105
P. 704.542.5332 F. 704.542.2330
www.arcons.com

Harris Teeter
Your Neighborhood Food Market

HARRIS TEETER #44
SOUTH COLLEGE RD. & SHIPYARD
WILMINGTON, NC



BONDURANT ASSOCIATES
CORPORATE ENGINEERING
LICENSE #C0880

PROJECT NUMBER: RAVEY 594C
JOB NO: 16-144-05
PR BY: JSM

REVISION	No.	Date

ROOF FRAMING PLAN AND DETAILS