

ABBREVIATIONS	
AD	- ACCESS DOOR
AFF	- ABOVE FINISHED FLOOR
AHU	- AIR HANDLING UNIT
BDD	- BACKDRAFT DAMPER
BOD	- BOTTOM OF DUCT
CF	- CEILING FAN
CU	- CONDENSING UNIT
DG	- DOOR GRILLE
DAC	- DOOR AIR CURTAIN
E	- EXISTING
EA	- EXHAUST AIR
EAT	- ENTERING AIR TEMPERATURE
EE	- EXISTING EXHAUST
EF	- EXHAUST FAN
EG	- EXHAUST GRILLE
EMS	- ENERGY MANAGEMENT SYSTEM
ER	- EXISTING RETURN
ES	- EXISTING SUPPLY
EWH	- ELECTRIC WALL HEATER
EHW	- ELECTRIC WALL HEATER
GALV	- GALVANIZED
GC	- GENERAL CONTRACTOR
H	- KITCHEN EXHAUST HOOD
IMC	- INTERNATIONAL MECHANICAL CODE
I/O	- INPUT OUTPUT CONTROL
LAT	- LEAVING AIR TEMPERATURE
LP	- LOUVERED PENTHOUSE
NFPA	- NATIONAL FIRE PROTECTION ASSOCIATION
MAU	- MAKEUP AIR UNIT
N	- NEW
NI	- NEGATIVE IONIZER
NIMC	- NOT IN MECHANICAL CONTRACT
NTS	- NOT TO SCALE
OA	- OUTDOOR AIR
R	- RETURN GRILLE
RA	- RETURN AIR
RTC	- ROOF TOP CONTROL
RTU	- ROOF TOP UNIT
S	- SUPPLY DIFFUSER
SA	- SUPPLY AIR
SS	- STAINLESS STEEL
TG	- TRANSFER GRILLE
TD	- TOP OF DUCT
VCD	- VOLUME CONTROL DAMPER
UH	- UNIT HEATER
VF	- VERIFY IN FIELD

LEGEND	
KEYED NOTE	ROUND REDUCING WYE BRANCH
THERMOSTAT	
THERMOSTAT WITH LOCKING COVER	
CPC EMS TEMPERATURE SENSOR	
CPC EMS HUMIDITY SENSOR	
CPC EMS DEW POINT SENSOR	
FAN ON/OFF SWITCH	
DUCT MOUNTED SMOKE DETECTOR	
DOOR AIR CURTAIN MICROSWITCH CONTROLLER	
HOOD FIRE SUPPRESSION SYSTEM MANUAL PULL STATION	
AIR DEVICE (REFER TO SCHEDULE)	SUPPLY RECTANGULAR DUCT UP
EQUIPMENT MARK NUMBER (REFER TO SCHEDULE)	RETURN RECTANGULAR DUCT UP
RETURN ROUND DUCT UP	SUPPLY RECTANGULAR DUCT DOWN
SUPPLY ROUND DUCT UP	RETURN RECTANGULAR DUCT DOWN
SUPPLY ROUND DUCT DOWN	RECTANGULAR BULLHEAD TEE WITH TURNING VANES
RETURN ROUND DUCT DOWN	RECTANGULAR ELBOW WITH TURNING VANES
ROUND ELBOW	RECTANGULAR RADIUS ELBOW
ROUND LOSS TEE	FLEXIBLE DUCT MAXIMUM 5'-0"
45° ROUND LATERAL	CONDENSATE LINE
ROUND REDUCING BULLHEAD TEE WITH VANES	1" DOOR UNDERCUT (FURNISHED WITH DOOR)
ROUND SPIRAL DOUBLE WALL DUCT	EXISTING DUCT, FITTINGS AND EQUIPMENT

**HVAC EQUIPMENT NOTES**  
GENERAL NOTE: PROVIDE COMBINATION MAGNETIC STARTER/DISCONNECT WITH HAND/OFF/AUTO SELECTOR SWITCH FOR EACH MOTOR SPECIFIED TO OPERATE AT 200 VOLTS OR HIGHER. PROVIDE MANUAL STARTER/DISCONNECT WITH HAND/OFF/AUTO SELECTOR SWITCH FOR EACH MOTOR SPECIFIED TO OPERATE AT 120 VOLTS. ALL EQUIPMENT SUPPLIED WITH INTEGRAL STARTERS SHALL BE PROVIDED WITH DISCONNECTS.

FAN SCHEDULE													
MARK	AREA SERVED	CFM	E.S.P. (IN W.G.)	DRIVE TYPE	FAN RPM	MOTOR			MANUFACTURER	MODEL	REMARKS	CONTROL METHOD	
						POWER	VOLTS	PHASE				HOOD MOUNTED ON/OFF SWITCH	HOOD MOUNTED ON/OFF SWITCH
EF-2	HOOD H-2	2,250	1.5	BELT	1368	1 1/2 HP	208	3	COOK	180VHBB	NOTES-1, 3, 8 & 9	HOOD MOUNTED ON/OFF SWITCH	
EF-8	HOOD H-3	1,200	1.5	BELT	1826	3/4 HP	208	3	COOK	165VX6B	NOTES-1, 3, 8 & 9	HOOD MOUNTED ON/OFF SWITCH	

NOTES:  
1. EF-2 AND EF-8 SHALL BE PURCHASED BY HARRIS TEETER.  
2. NOT USED.  
3. REFER TO SHEET H2.1 FOR COMPLETE FAN SPECIFICATION.  
4. PREWIRED DISCONNECT, ROOF CURB, BACKDRAFT DAMPER, BURGLAR BARS, HINGED FAN/CURB CONNECTION.  
5. WHITE PLASTIC GRILLE, BACKDRAFT DAMPER, ROOF CAP WITH BIRDSCREEN AND CURB.  
6. FAN SPEED CONTROLLER.  
7. PRE-WIRED DISCONNECT, INLET/OUTLET FLEX DUCT CONNECTORS, HANGING SPRING ISOLATORS, LINE VOLTAGE CONTROL THERMOSTAT, AND WHITE PLASTIC GRILLE.  
8. HINGED FAN/CURB CONNECTION.  
9. CURB SHALL BE WELDED TO ROOF DECK.  
10. BURGLAR BARS  
11. FAN SHALL BE SHIPPED KNOCKED DOWN, FIELD ASSEMBLY BY MECHANICAL CONTRACTOR.

KITCHEN EXHAUST HOOD SCHEDULE												
MARK	EQUIPMENT SERVED	SIZE		TOTAL EXHAUST AIR			DUCT SIZE (IN.)	VELOCITY (FPM)	MANUFACTURER / MODEL	REMARKS		
		LENGTH (IN.)	WIDTH (IN.)	COLLAR S.P. (IN. W.G.)	CFM	DUCT SIZE (IN.)				VELOCITY (FPM)	REMARKS	REMARKS
H-1	EXISTING HOOD											
H-2	WOK AND GAS FRYER	10'-0"	57"	-0.377	2250	20"x10"	1620	CAPTIVE AIR / 5424ND-2	① ② ③ ④ ⑤ ⑥ ⑦ ⑧ ⑨ ⑩ ⑪			
H-3	PIZZA OVEN	5'-5"	54"	-0.5"	1200	10"x10"	1728	CAPTIVE AIR / 5424ND-2	① ② ③ ④ ⑤ ⑥ ⑦ ⑧ ⑨ ⑩ ⑪			

NOTES:  
1. REFER TO ARCHITECTURAL FIXTURE SCHEDULE FOR SPECIFIC KITCHEN EQUIPMENT TO BE INSTALLED BELOW HOOD. VERIFY COOKING APPLIANCE LINE-UP WITH HARRIS TEETER PRIOR TO FABRICATION OF HOOD AND ASSOCIATED FIRE SUPPRESSION SYSTEM.  
2. PROVIDE MASTER ELECTRIC PANEL WITH EXHAUST FAN MOTOR STARTER AND ALL MISC. CONTROL DEVICES AND WIRING TO MATCH HOOD REQUIREMENTS. PROVIDE WITH INTEGRAL MAIN DISCONNECT SWITCH IN ACCORDANCE WITH NEC 430.101 AND 430.102. SEE HOOD CONTROL DRAWING H2.1.  
3. PROVIDE HOOD MOUNTED SWITCH PANEL WITH LIGHT SWITCH, FAN SWITCH AND PILOT LIGHT.  
4. PROVIDE HOOD WITH COMPLETE UL 300 LISTED FIRE SUPPRESSION SYSTEM INCLUDING MECHANICAL GAS SHUT OFF VALVE AS REQUIRED BY NFPA, IMC AND LOCAL JURISDICTION.  
5. ALL EXPOSED HOOD SURFACES SHALL BE 18 GA. TYPE 304 STAINLESS STEEL.  
6. WALLS ADJACENT TO HOODS SHALL BE COVERED FLOOR TO CEILING WITH CERAMIC TILE BY GENERAL CONTRACTOR. SEE ARCHITECTURAL DWGS.  
7. HOODS NOT FLUSH WITH CEILING SHALL BE PROVIDED WITH STAINLESS STEEL CEILING CLOSURE FROM TOP OF HOOD TO 6" ABOVE FINISHED CEILING.  
8. PROVIDE UL INCANDESCENT LIGHTS (QUANTITY AND LOCATION AS REQUIRED TO MAINTAIN A MINIMUM OF 50 FOOT CANDLES ON THE COOKING SURFACE), FILTERS AND ACCESSORIES AS INDICATED ON HOOD DETAILS. SEE DWG H2.1.  
9. HOOD SHALL BE PURCHASED BY HARRIS TEETER.  
10. FAN AND LIGHT SWITCH CONTROLS AND FIRE SUPPRESSION SYSTEM SHALL BE SERVED FROM EXISTING H-1.  
11. PROVIDE HEAT SENSORS IN HOOD EXHAUST OUTLETS INTERLOCKED WITH HOOD EXHAUST FAN TO OPERATE FAN WHEN COOKING EQUIPMENT UNDER HOOD IS OPERATING.

AIR BALANCE SCHEDULE						
UNIT NO.	SUPPLY AIR SYSTEMS			EXHAUST SYSTEMS		NOTES
	SUPPLY CFM	RETURN CFM (MINIMUM)	OUTSIDE AIR CFM	UNIT NO.	FAN CFM	
RTU-1	17,600	12,600	5,000	EF-1	2,240	2,240
RTU-2	5,000	5,000	0	EF-2	2,250	2,250
RTU-3	5,000	4,000	1,000	EF-3	850	850
RTU-4	3,000	2,600	400	EF-4	150	150
RTU-5	5,000	4,100	900	EF-5	525	525
AHU-1	1,300	1,080	220	EF-6	150	150
AHU-2	1,650	1,305	345	EF-7	15,000	0
AHU-3	800	640	160	EF-8	1,200	1,200
TOTAL OUTSIDE AIR			8,025			
TOTAL EXHAUST AIR						7,365
PRESSURIZATION					660	

**NOTE:**  
ALL BIDDING HVAC CONTRACTORS TO CONTACT MCNAMARA & COMPANY - RICK THOMAS (704) 243-3811 FOR HVAC EQUIPMENT PACKAGE PROPOSAL. HVAC CONTRACTOR TO PURCHASE EQUIPMENT PACKAGE FROM MCNAMARA & COMPANY. NO EXCEPTIONS. HVAC CONTRACTOR IS RESPONSIBLE FOR ACCEPTING AND COORDINATING EQUIPMENT DELIVERY. HARRIS TEETER WILL PURCHASE EXHAUST HOOD, WET CHEMICAL FIRE SYSTEM FOR HOOD, ROOFTOP HVAC UNITS AND ROOFTOP FANS.

**GENERAL NOTES**

- ALL WORK AND MATERIALS SHALL BE IN ACCORDANCE WITH ALL NATIONAL, STATE, AND LOCAL CODES AND REGULATIONS. THE HVAC CONTRACTOR SHALL BE RESPONSIBLE TO ENSURE THAT ALL HVAC WORK IS PROVIDED AND INSTALLED IN STRICT ACCORDANCE WITH SEISMIC AND HURRICANE REQUIREMENTS FOR THIS LOCATION.
- DO NOT SCALE FROM THESE DRAWINGS.
- FIELD VERIFY AND COORDINATE THE INSTALLATION OF ALL HVAC EQUIPMENT AND MATERIAL WITH OTHER MECHANICAL, BUILDING STRUCTURE, REFRIGERANT LINES, SPRINKLER PIPING, ELECTRICAL CONDUIT/LIGHTS AND DECOR ELEMENTS.
- THE FINISH AND COLOR OF THE AIR DEVICES, AND ALL OTHER EXPOSED HVAC EQUIPMENT SHALL BE COORDINATED WITH THE ARCHITECT.
- COORDINATE AIR DEVICE LOCATIONS WITH THE REFLECTED CEILING PLAN AND ALL OTHER MECHANICAL, ELECTRICAL, SPRINKLER, ARCHITECTURAL, STRUCTURE AND OTHER INTERIOR DECOR FEATURES.
- DUCT SIZES MUST BE VERIFIED FOR CLEARANCES AT THE JOB SITE PRIOR TO FABRICATION. ALL DEVIATIONS FROM ORIGINAL CONTRACT DRAWINGS SHALL BE REVIEWED BY ENGINEER.
- DURING CONSTRUCTION, PROVIDE TEMPORARY FILTER MEDIA OVER ALL RETURN GRILLES TO KEEP OUT DUST AND DEBRIS.
- ALL DUCT SIZES SHOWN ARE FREE INSIDE DIMENSIONS. ALLOWANCE SHALL BE MADE FOR SPECIFIED INSULATION OR DUCT LINER THICKNESS.
- TEST AND BALANCE OF HVAC SYSTEMS SHALL BE PROVIDED BY OWNER. THE HVAC CONTRACTOR SHALL PROVIDE THE SERVICES OF AN ON SITE MECHANIC TO ASSIST THE TEST AND BALANCE AGENT AS REQUIRED TO MAKE CHANGES IN PULLEYS, BELTS AND DAMPERS OR PROVIDE ADDITIONAL DAMPERS AS REQUIRED FOR CORRECT BALANCE OF HVAC SYSTEMS AT NO ADDITIONAL COST TO THE OWNER. REPLACE ALL DIRTY FILTERS PRIOR TO STARTING TEST AND BALANCE.
- ALL ACCESS DOORS REQUIRED IN GENERAL CONSTRUCTION ARE TO BE PROVIDED AND INSTALLED BY THE GENERAL CONTRACTOR. IT IS THE RESPONSIBILITY OF THE HVAC CONTRACTOR TO IDENTIFY SIZE, TYPE AND LOCATION OF SUCH DOORS FOR THE PROPER ACCESS TO ALL CONCEALED HVAC EQUIPMENT, VALVES AND OTHER RELATED EQUIPMENT. THE HVAC CONTRACTOR SHALL IDENTIFY THESE REQUIREMENTS ON A COORDINATED SHOP DRAWING PRIOR TO SYSTEM FABRICATION AND INSTALLATION.
- REFER TO WRITTEN SPECIFICATIONS FOR THE FULL PROJECT SCOPE.
- ALL CEILING MOUNTED EQUIPMENT MUST BE SUPPORTED DIRECTLY FROM BUILDING STRUCTURE WITH COMBINATION SPRING AND NEOPRENE-IN-SHEAR HANGERS AND ROD. PROVIDE SUPPLEMENTARY STEEL AS REQUIRED TO ADEQUATELY SUPPORT THE LOAD.
- PLANS WERE DERIVED FROM EXISTING BUILDING PLANS AND SITE VISITS AND ARE INTENDED TO REASONABLY REPRESENT EXISTING CONDITIONS. HOWEVER, ACTUAL CONDITIONS MAY DEViate FROM THAT SHOWN ON THE DRAWINGS. THE NOTES IDENTIFY SPECIFIC AREAS OF WORK BUT MAY NOT BE COMPLETE IN IDENTIFICATION OF ALL REMOVALS REQUIRED FOR INSTALLATION OF NEW WORK. THE CONTRACTOR SHALL VERIFY ACTUAL CONDITIONS AND COORDINATE THE DEMOLITION WITH NEW WORK SO THAT DEMOLITION IS COMPLETE AS REQUIRED TO NOT OBSTRUCT PROPER EXECUTION OF THE CONTRACT WORK.
- COORDINATE INSTALLATION OF NEW SYSTEMS WITH GENERAL CONTRACTOR AND HARRIS TEETER PROJECT MANAGER TO MAINTAIN EXISTING SYSTEMS OPERATIONAL AS REQUIRED TO ALLOW UNINTERRUPTED STORE OPERATIONS DURING THE COURSE OF THE RENOVATION.
- COORDINATE THE SIZES AND LOCATIONS OF HVAC EQUIPMENT, CURBS AND ROOF OPENINGS WITH STRUCTURAL STEEL.
- ALL ROOFTOP EQUIPMENT CURBS SHALL BE WELDED TO THE ROOF STRUCTURE.
- ALL EXHAUST FANS SHALL TERMINATE AT THE ELEVATIONS REQUIRED BY THE APPLICABLE IMC AND NFPA CODES.
- RE-BALANCE EXISTING RTU-3 AND RTU-5 RETURN AND OUTSIDE AIR QUANTITIES TO NEW AIR QUANTITIES AS INDICATED ON AIR BALANCE SCHEDULE.

**RESPONSIBILITY NOTES:**

DESCRIPTION	HARRIS TEETER	HVAC CONTRACTOR	REFRIGERATION CONTRACTOR
PURCHASE AND DELIVERY OF EXHAUST HOODS, KITCHEN HOOD EXHAUST FANS AND ALL ASSOCIATED ACCESSORIES INCLUDING ROOF CURBS	X		
PURCHASE AND DELIVERY OF ALL HVAC EQUIPMENT AND ASSOCIATED ACCESSORIES REQUIRED BY THE PLANS AND SPECIFICATIONS NOT PURCHASED BY HARRIS TEETER (NOTE 1).		X	
INSTALLATION OF OWNER FURNISHED EQUIPMENT.		X	
ONE (1) YEAR LABOR WARRANTY FOR HVAC ROOF TOP UNITS		X	
UNLOADING, RIGGING, INSTALLATION AND COMMISSIONING OF ALL HVAC EQUIPMENT AND ACCESSORIES		X	
ALL OTHER HVAC RELATED WORK AND MATERIALS		X	

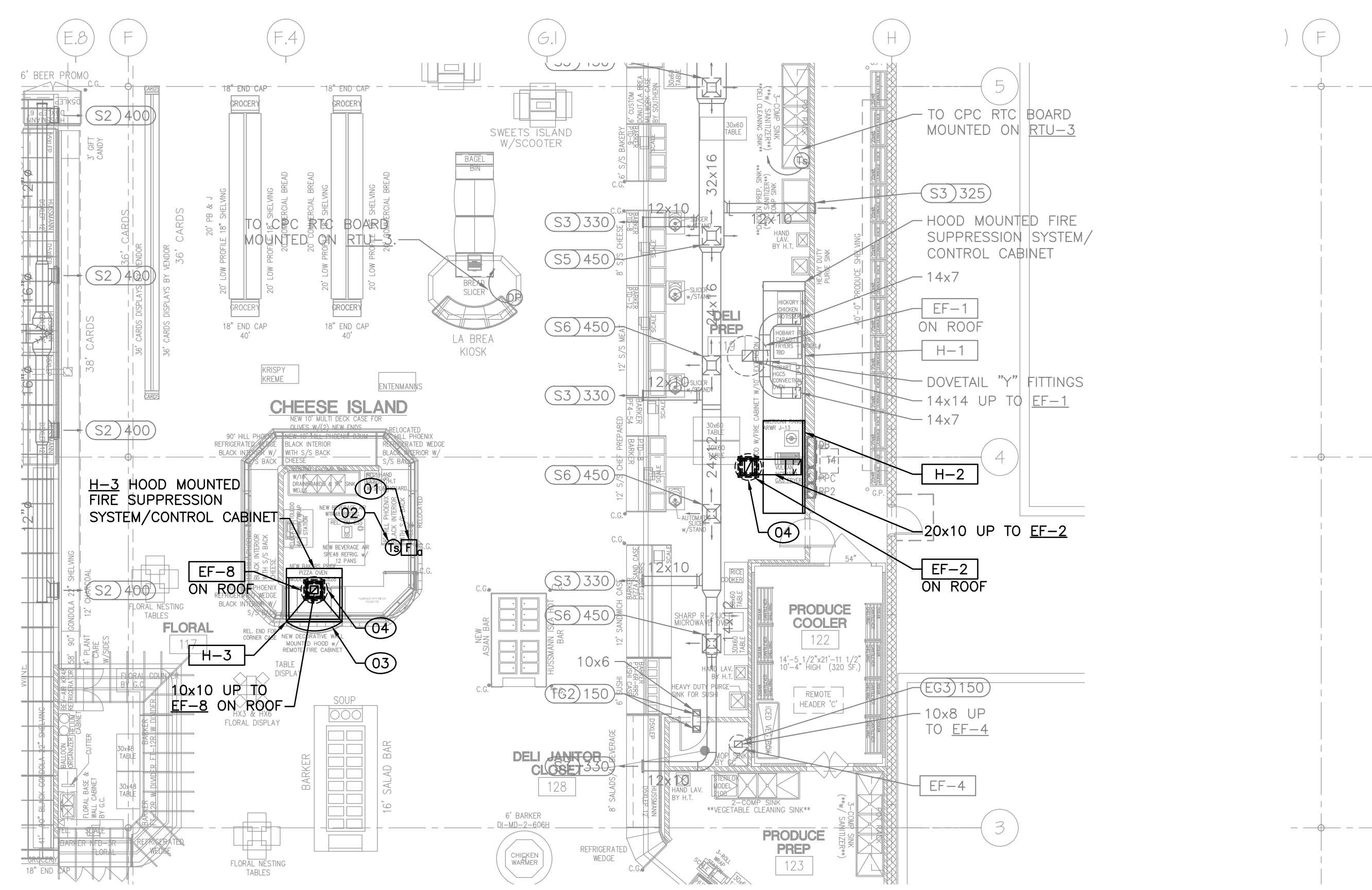
NOTES:  
1. REFRIGERATION EQUIPMENT MANUFACTURER SHALL FURNISH ALL CPC HVAC CONTROLS.  
2. REFER TO ENERGY MANAGEMENT DRAWINGS FOR HVAC EMS RESPONSIBILITIES.

**RENOVATION KEY NOTES:**

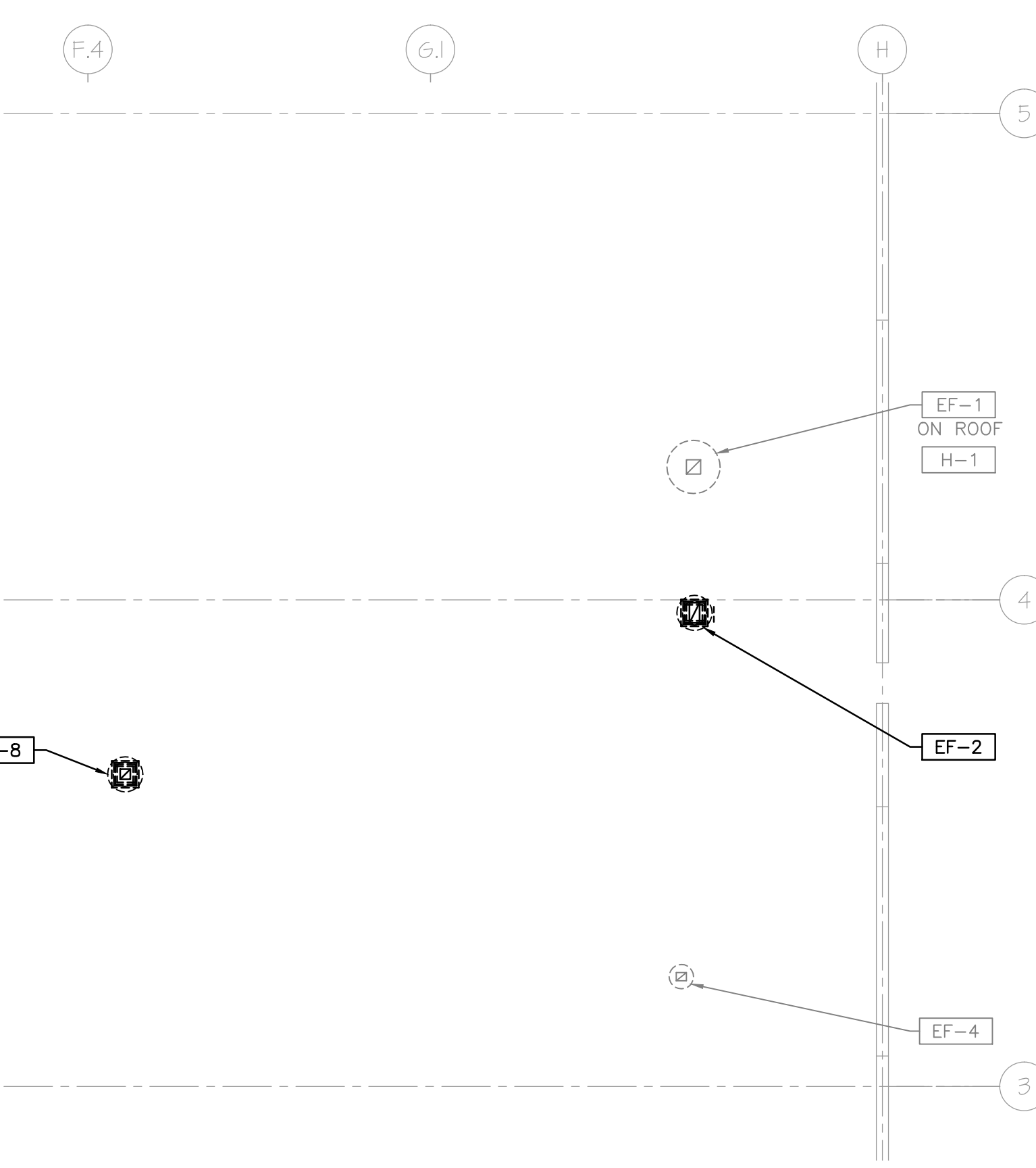
- HOOD H-3 FIRE SUPPRESSION SYSTEM MANUAL PULL STATION MOUNT ON DECOR POST. COORDINATE WITH DECOR CONTRACTOR.
- WALL MOUNTED HOOD CONTROL SYSTEM SPACE TEMPERATURE SENSOR. FURNISHED WITH HOOD CONTROLS INSTALLED BY MECHANICAL CONTRACTOR. MOUNT SENSOR ON DECOR POST. COORDINATE WITH DECOR CONTRACTOR.
- COORDINATE THE HOOD PLACEMENT WITH THE FINAL LOCATION OF THE COOKING EQUIPMENT TO PROVIDE MINIMUM 6" OVERHANG OF HOOD CAPTURE AREA OVER THE EQUIPMENT COOKING SURFACE. SEE DETAIL 3, SHEET H2.2.
- COORDINATE EXACT FAN/CURB PLACEMENT ON THE ROOF WITH THE EXISTING STRUCTURE AND OFFSET DUCT BETWEEN FAN AND HOOD AS REQUIRED TO MATCH FINAL FAN LOCATION.

**HVAC SHEET LIST**

DRAWING NUMBER	DRAWING TITLE
H1.1	HVAC PARTIAL PLANS, SCHEDULES, NOTES, LEGEND AND ABBREVIATIONS
H2.1	HVAC DETAILS
H2.2	HVAC DETAILS



**HVAC PARTIAL RENOVATION FLOOR PLAN**  
SCALE: 3/32" = 1'-0"



**HVAC PARTIAL RENOVATION ROOF PLAN**  
SCALE: 3/32" = 1'-0"

**ARCONS DESIGN STUDIO**  
architecture planning interiors  
10500 Independence Pointe Parkway  
Suite 300  
Matthews, North Carolina 28105  
P: 704.542.5252 F: 704.542.2330  
www.arconsds.com

BRANDT ENGINEERING, INC.  
NC LICENSE NO. C-1604  
PHONE: (804) 794-6656  
FAX: (804) 794-8588  
EMAIL: ceds@brandt.com

NOTE: THIS DOCUMENT MAY HAVE BEEN ELECTRONICALLY TRANSMITTED. IF UNSIGNED, IT CANNOT BE FILED FOR PUBLIC RECORD. PUBLIC RECORD FILINGS REQUIRE SIGNED AND SEALED DOCUMENTS.

**Harris Teeter**  
Your Neighborhood Food Market

HARRIS TEETER #441  
SOUTH COLLEGE RD. & SHIPYARD  
WILMINGTON, NC

Electronically Signed by:  
John S. Parker  
Created via Bluebeam PDF Revu  
w/IdemTrust Certificate  
2014.05.05 15:13:50-0400

PROJECT MANAGER  
KIM STADY  
JOB NO. 14-H1772-02  
DR. BY: KEM

REVISIONS

No.	Date

DRAWING NAME

HVAC PARTIAL PLANS, SCHEDULES, NOTES, LEGEND AND ABBREVIATIONS

SHEET NO. H1.1

ISSUE DATE: 5/9/14

5/9/2014 2:20:52 PM