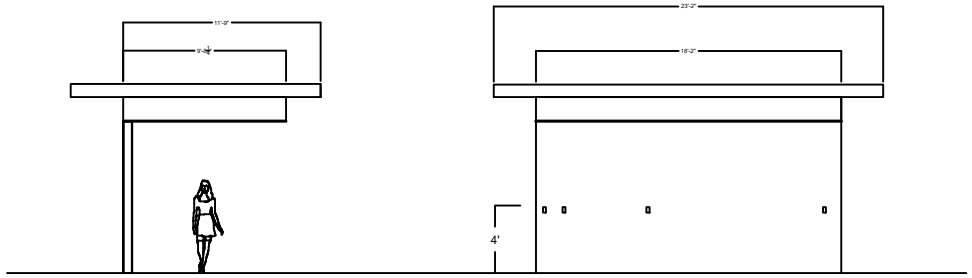
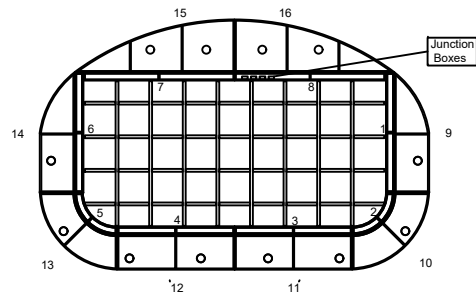


1

Floral Canopy with Wall
Left Side, Front and Top Views

Scale: 3/8" = 1'-0"

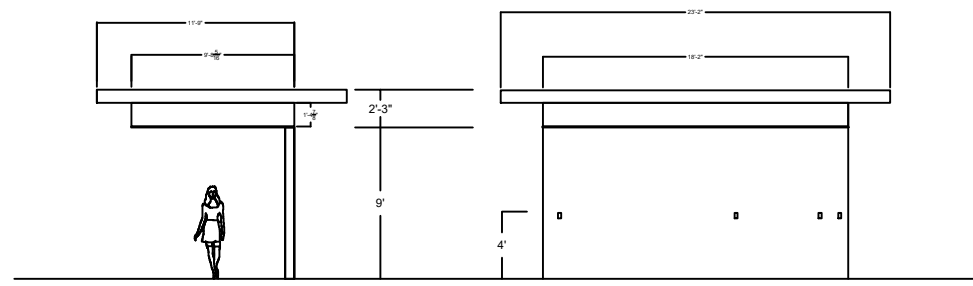
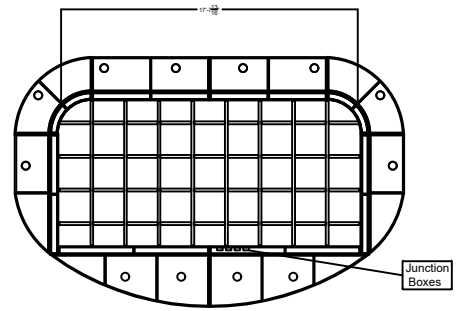


Estimated Total weight: 612 lbs

2

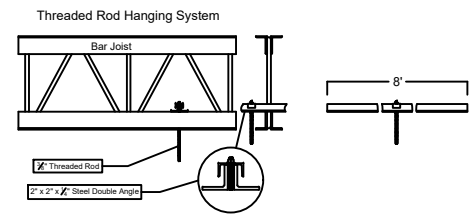
Floral Canopy with Wall
Right Side, Rear and Top Views

Scale: 3/8" = 1'-0"



3

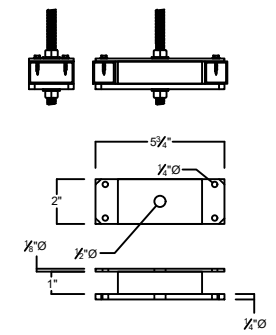
Bar Joist Attachment System
used on Floral Canopy



4

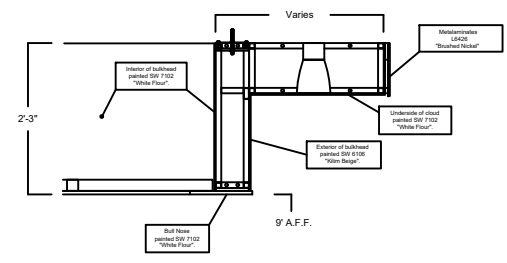
Bulkhead Mounting Bracket - 6 Inch
Scale: 6" = 1'-0"

Estimated Brackets: 12



5

Floral Canopy Section
Scale: 1 1/2" = 1'



Revisions
09-26-17
1) Notation "For Reference Only" changed to "For Construction".

Drawn by: Plastex
Scale: Varies
Date: 09-26-18

For Construction

Job Description
Harris Teeter 495 Creedmoor Road Raleigh NC

Sheet Description
Floral Canopy with Wall Construction Plan

Sheet Number
D-3.1