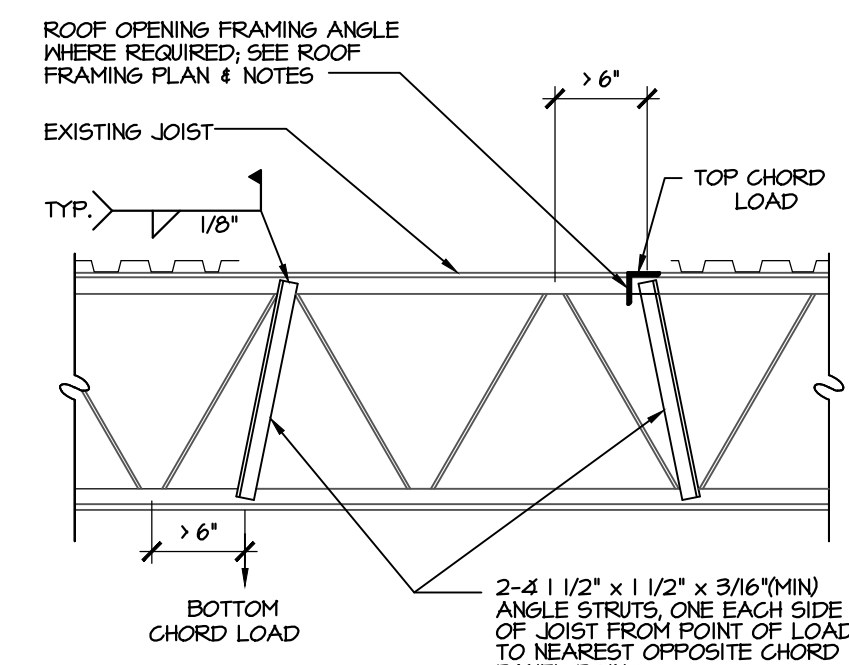
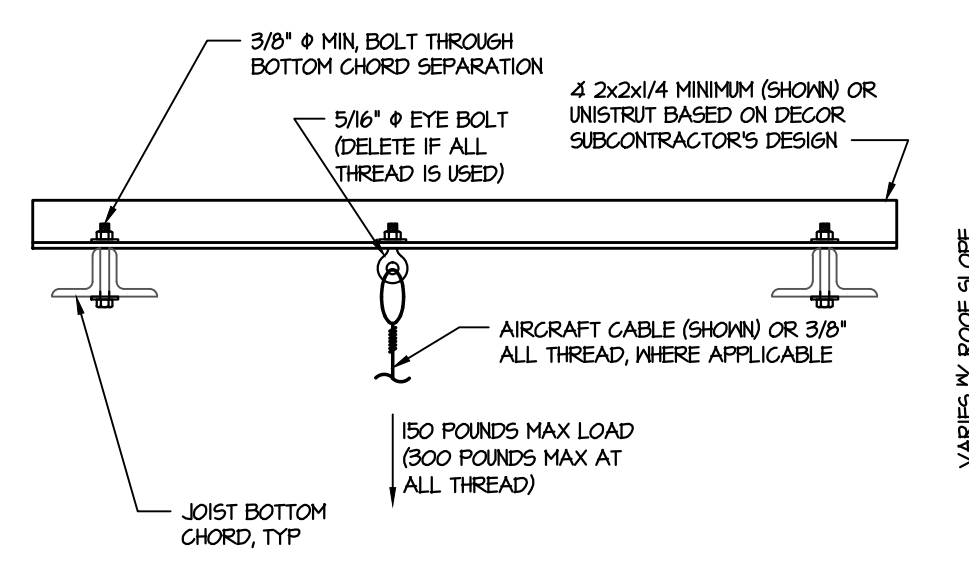


**TYP ROOF OPENING DETAIL**  
SCALE: NOT TO SCALE

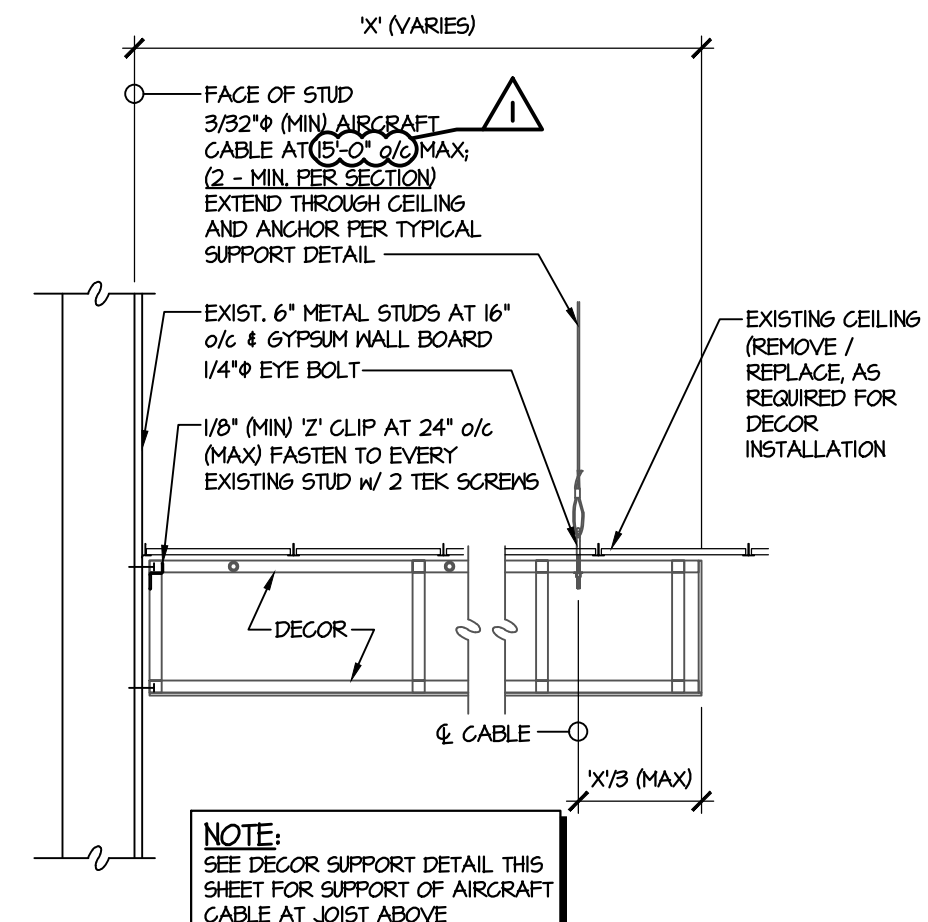
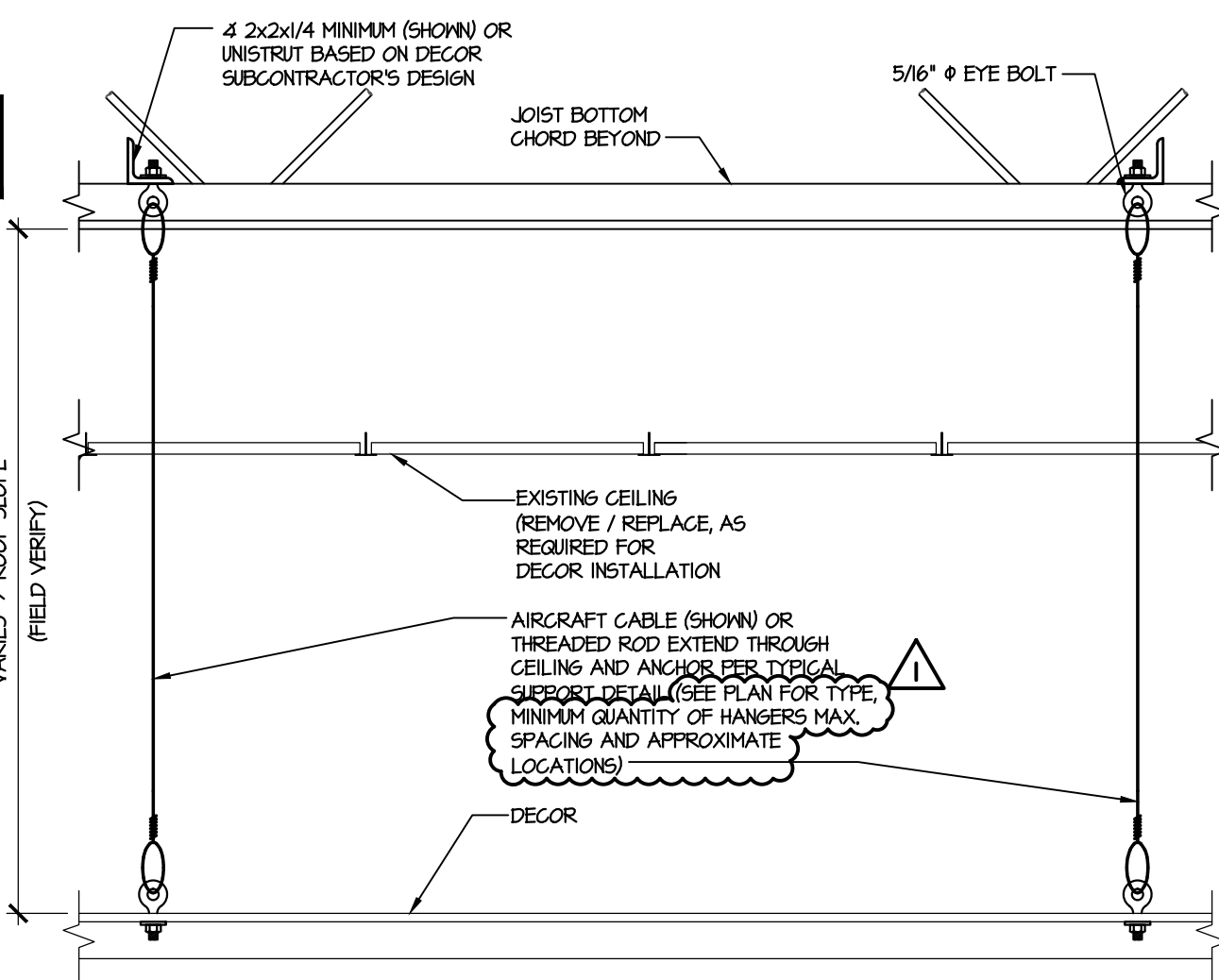


**TYPICAL REINFORCED JOIST DETAIL**  
SCALE: NOT TO SCALE

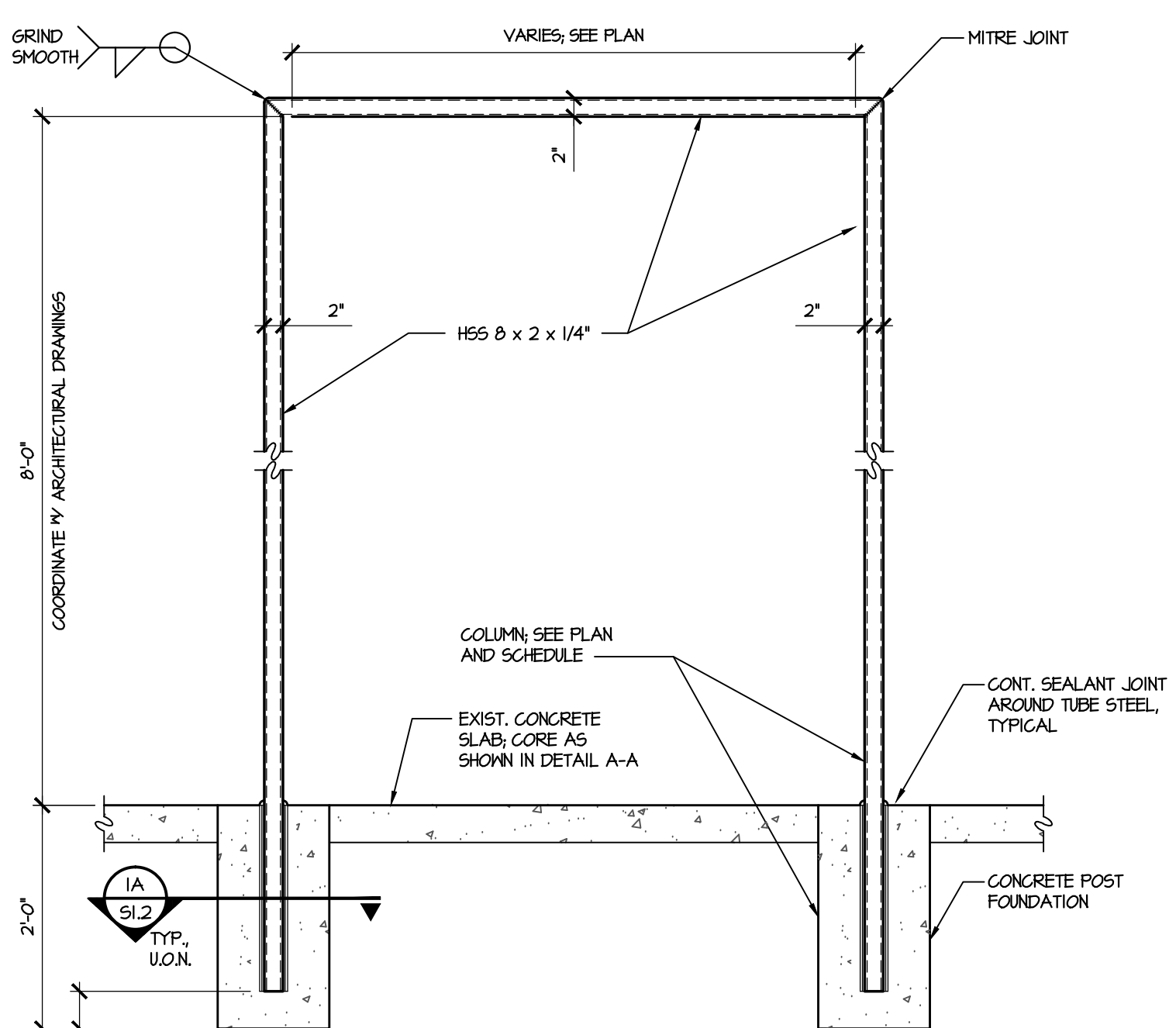
ALL ITEMS SHOWN SHALL BE INCLUDED IN THE GENERAL CONTRACTOR'S (G.C.) SCOPE OF WORK AND SHALL BE INSTALLED BY THE DECOR SUBCONTRACTOR. ALL MATERIALS SHOWN WILL BE PROVIDED BY THE DECOR SUBCONTRACTOR. SEE ARCHITECTURAL DRAWINGS FOR DECOR SUBCONTRACTOR CONTACT INFORMATION.



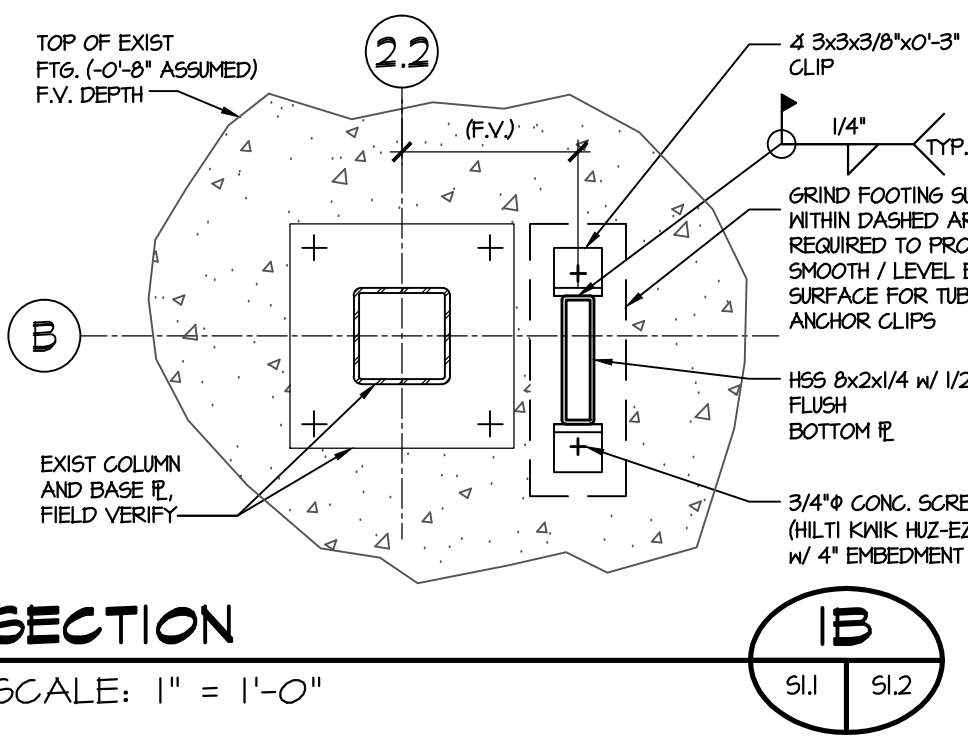
**TYPICAL DECOR SUPPORT DETAILS (CHECKOUT CANOPY, EXPRESS CHECKOUT CANOPY, FLORAL CANOPY, DELI/BAKERY CLOUDS/BULKHEAD, CUSTOMER SERVICE CLOUDS/BULKHEAD AND WINE CANOPY)**  
SCALE: NOT TO SCALE



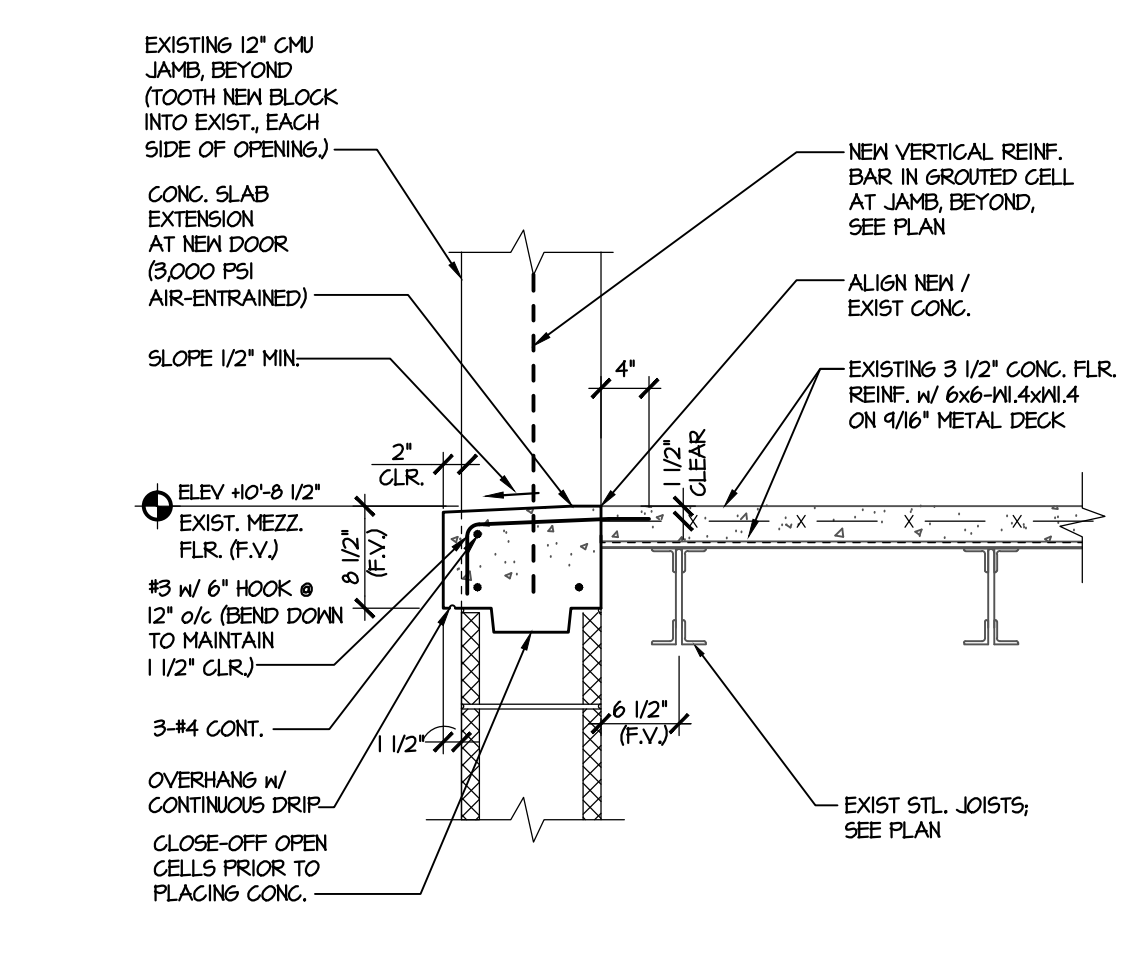
**WALL SUPPORTED DECOR ("CLOUD") DETAIL**  
SCALE: 3/4" = 1'-0"



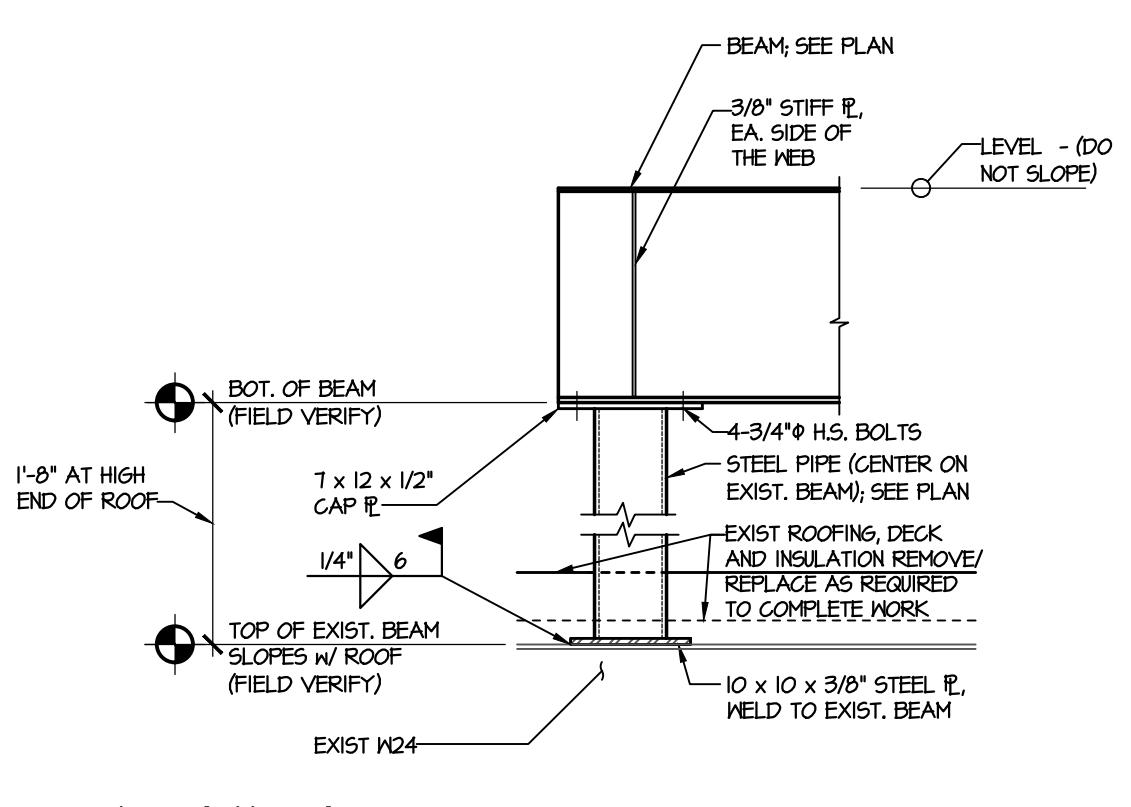
**SECTION 1**  
SCALE: 3/4" = 1'-0"



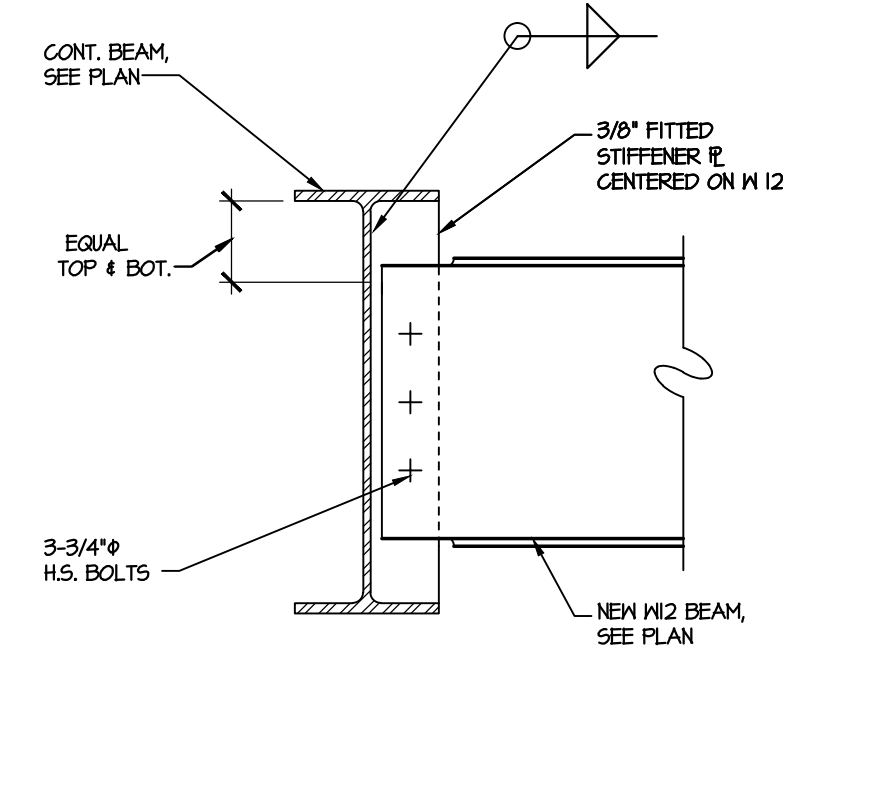
**SECTION 2**  
SCALE: 1" = 1'-0"



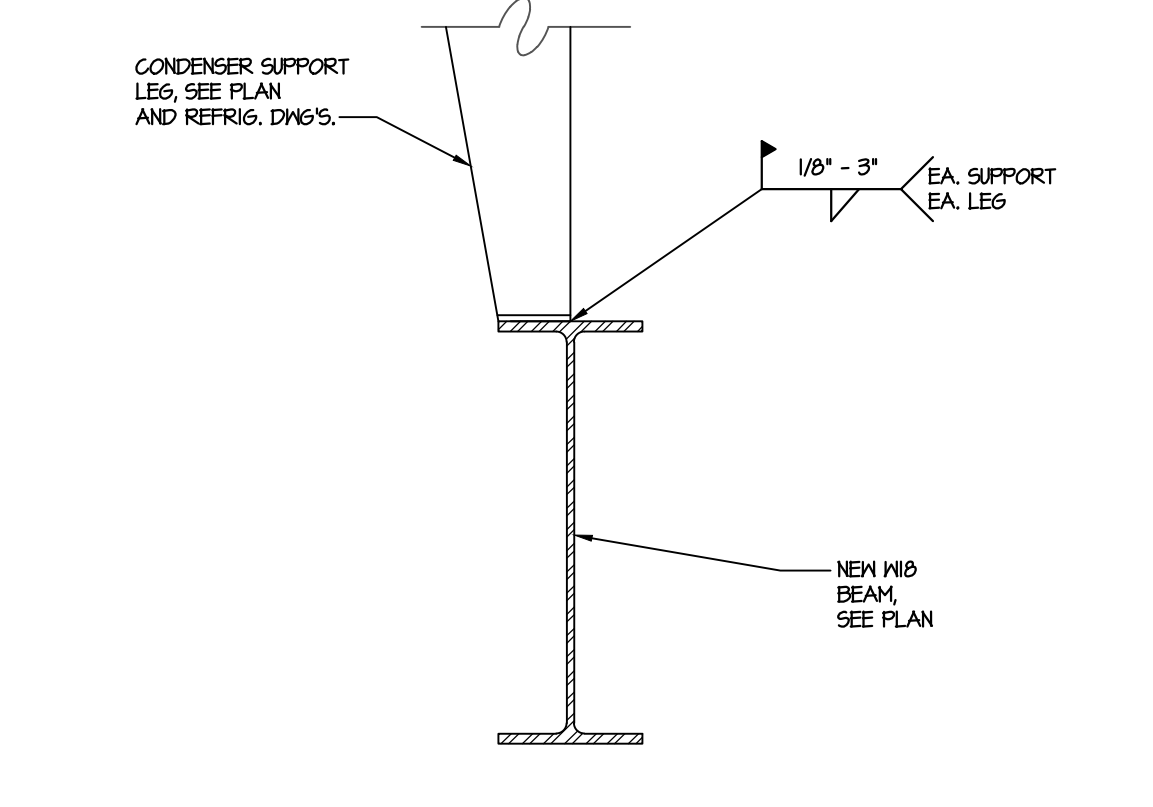
**SECTION 3**  
SCALE: 3/4" = 1'-0"



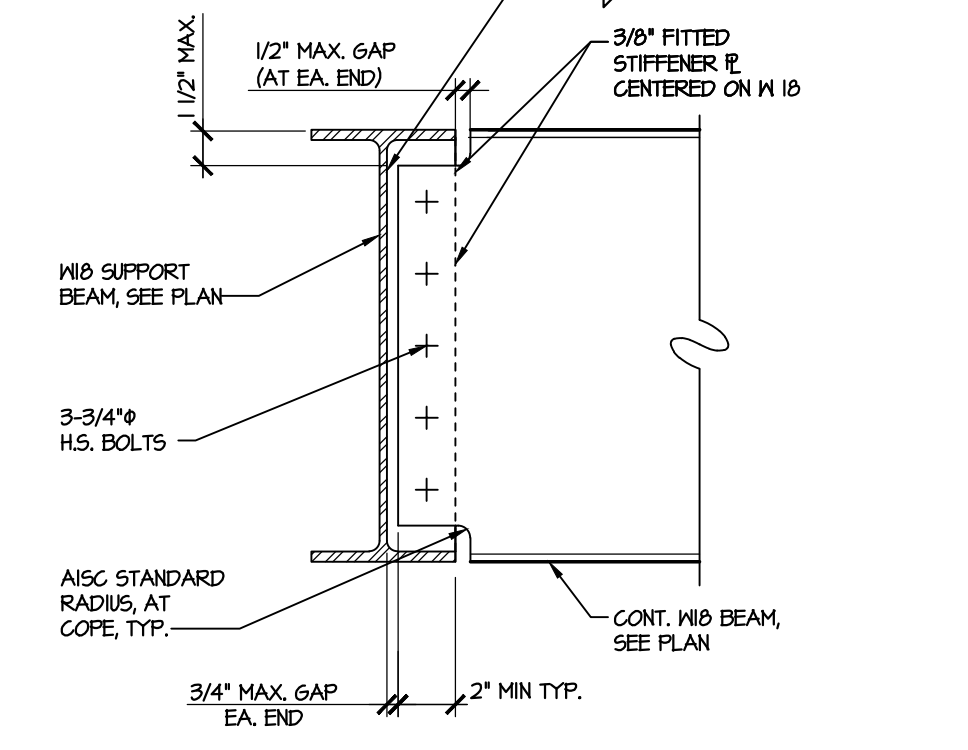
**DETAIL AT PIPE SUPPORT**  
SCALE: NOT TO SCALE



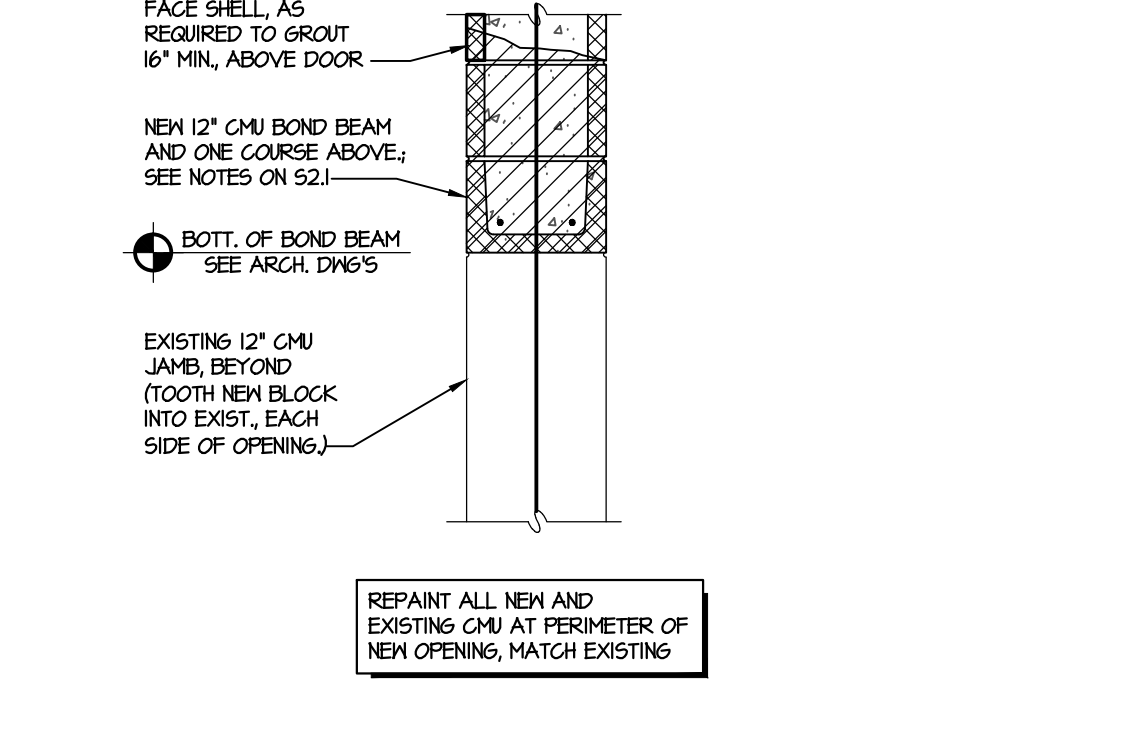
**SECTION 4**  
SCALE: 1-1/2" = 1'-0"



**SECTION 5**  
SCALE: 1-1/2" = 1'-0"



**SECTION 6**  
SCALE: 1-1/2" = 1'-0"



**SECTION 7**  
SCALE: 3/4" = 1'-0"

**GENERAL CONSTRUCTION SEQUENCE GUIDELINES**

- PRIOR TO BIDDING AND THE START OF CONSTRUCTION, THE CONTRACTOR SHALL VISIT THE SITE TO VERIFY EXISTING CONDITIONS.
- THE ORDER AND SEQUENCE OF ALL DEMOLITION AND NEW WORK SHALL BE COORDINATED AND FINALIZED WITH HARRIS TEETER'S PROJECT MANAGER PRIOR TO THE START OF ANY WORK.
- SHIFTS: RELOCATE EXISTING EQUIPMENT IF REQUIRED, AND CONSTRUCT TEMPORARY BARRICADES TO ALLOW DEMOLITION WORKS.
- THE ORDER AND SEQUENCE OF ALL DEMOLITION AND NEW WORK SHALL BE AS DETERMINED BY THE HARRIS TEETER PROJECT MANAGER.

**DEMOLITION GENERAL NOTES**

- IT IS THE INTENT OF HARRIS TEETER TO MAINTAIN OPERATIONS AND REMAIN OPEN DURING DEMOLITION AND CONSTRUCTION. TENANTS IN OTHER PORTIONS OF THE CENTER WILL ALSO MAINTAIN NORMAL OPERATIONS. CONTRACTOR SHALL SCHEDULE AND CONDUCT ALL ACTIVITIES IN A MANNER TO MINIMIZE DISRUPTIONS OF ONGOING OPERATIONS AND BUSINESS.
- PROVIDE ALL NECESSARY DEMOLITION WORK AS REQUIRED TO PROVIDE THE NEW WORK SHOWN. DEMOLITION WORK WHICH HAS NOT BEEN IDENTIFIED SHALL BE PROVIDED AS REQUIRED TO MAKE THE COMPLETE SCOPE OF NEW WORK SHOWN.
- IDENTIFY AND PROTECT DURING DEMOLITION OPERATIONS ALL UTILITIES SYSTEMS & EQUIPMENT WHICH REMAIN IN SERVICE.
- PROVIDE TEMPORARY BARRICADES AND OTHER FORMS OF PROTECTION TO PROTECT OWNERS PERSONNEL AND GENERAL PUBLIC FROM HAZARD DUE TO DEMOLITION WORKS.
- PROTECT FROM DAMAGE EXISTING FINISH WORK THAT IS TO REMAIN IN PLACE AND BECOMES EXPOSED DURING DEMOLITION OPERATIONS.
- REMOVE PROTECTIONS AT COMPLETION OF WORK.
- DO NOT USE CUTTING TOOLS FOR REMOVAL OF THE WORK AREA IS CLEARED OF FLAMMABLE MATERIALS. AT CONCEALED SPACES, SUCH AS ROOFING SYSTEMS AND INTERIOR WALL DUCTS AND SPACES, VERIFY CONTENTS OF HIDDEN SPACE BEFORE STARTING FLAME-CUTTING OPERATIONS. MAINTAIN PORTABLE FIRE SUPPRESSION DEVICES DURING FLAME-CUTTING OPERATIONS.
- DEMOLISH CONCRETE IN SMALL SECTIONS. CUT CONCRETE AT JUNCTIONS WITH CONSTRUCTION TO REMAIN USING POWER-DRIVEN SAW OR HAND TOOLS. DO NOT USE POWER-DRIVEN IMPACT TOOLS.
- PROVIDE SERVICES FOR EFFECTIVE AIR AND WATER POLLUTION CONTROLS AS REQUIRED BY LOCAL AUTHORITIES HAVING JURISDICTION.
- COMPLETELY FILL BELOW-GRADE AREAS AND VOIDS RESULTING FROM DEMOLITION WORK. PROVIDE FILL CONSISTING OF APPROVED EARTH, GRAVEL, OR SAND, FREE OF TRASH AND DEBRIS, DEEPER OVER 2 INCHES IN DIAMETER, ROOTS, OR OTHER ORGANIC MATTER. COMPACT TO NOT LESS THAN 95 PERCENT OF MAXIMUM DRY DENSITY PER ASTM D1557 STANDARD PROCTOR.
- IF UNANTICIPATED MECHANICAL, ELECTRICAL, OR STRUCTURAL ELEMENTS THAT COLLECT WITH INTERESTED FUNCTION OR DESIGN ARE ENCOUNTERED, INVESTIGATE AND MEASURE BOTH NATURE AND EXTENT OF THE COLLECT. SUBMIT REPORT TO THE ENGINEER IN WRITTEN ACCURATE DETAIL. PENDING RECEIPT OF DIRECTIVE FROM ENGINEER, REARRANGE SELECTIVE DEMOLITION SCHEDULE AS NECESSARY TO CONTINUE OVERALL JOB PROGRESS WITHOUT UNNECESSARY DELAY.
- REMOVE FROM BUILDING SITE DEBRIS, RUBBISH AND OTHER MATERIALS RESULTING FROM DEMOLITION OPERATIONS. TRANSPORT AND LEGALLY DISPOSE OFF SITE.
- COMPLY WITH APPLICABLE REGULATIONS, LAWS, AND ORDINANCES CONCERNING REMOVAL, HANDLING, AND PROTECTION AGAINST EXPOSURE OR ENVIRONMENTAL POLLUTION.
- EXISTING SITE HAS NOT BEEN TESTED FOR HAZARDOUS MATERIALS. ALL MATERIAL AND EQUIPMENT REMOVED REQUIRES THE PROPERTY OF THE CONTRACTOR (HAZARDOUS OR NON-HAZARDOUS). THE CONTRACTOR SHALL DETERMINE IF HAZARDOUS AND MUST DISPOSE OF MATERIAL IN ACCORDANCE WITH LOCAL AND/OR FEDERAL REGULATIONS.
- UPON COMPLETION OF DEMOLITION WORK, REMOVE TOOLS, EQUIPMENT, AND DEMOLISHED MATERIALS FROM SITE. REMOVE PROTECTIONS AND LEAVE INTERIOR AREAS BROOM CLEAN. REPAIR DEMOLITION PERFORMED IN EXCESS OF THAT REQUIRED. RETURN ELEMENTS OF CONSTRUCTION AND SURFACES TO REMAIN TO CONDITION EXISTING PRIOR TO START OF OPERATIONS. REPAIR ADJACENT CONSTRUCTION OR SURFACES SOILED OR DAMAGED BY SELECTIVE DEMOLITION WORK.
- PROVIDE TEMPORARY WATER-TIGHT ENCLOSURES OR FLASHINGS AS REQUIRED TO PROTECT CONCEALED CONSTRUCTION AND STORE OPERATIONS FROM OUTSIDE ELEMENTS DUE TO ANY DEMOLITION WORK. SEQUENCE DEMOLITION WORK WITH NEW WORK PROPERLY SO THAT EXPOSURE OF EXISTING CONCEALED CONSTRUCTION TO REMAIN IS MINIMIZED.
- MAINTAIN EXISTING UTILITIES REQUIRED TO REMAIN IN SERVICE AND PROTECT THEM AGAINST DAMAGE DURING DEMOLITION OPERATIONS.
- DO NOT INTERRUPT UTILITIES SERVING OCCUPIED OR USED FACILITIES, EXCEPT WHEN AUTHORIZED IN WRITING BY AUTHORITIES HAVING JURISDICTION. PROVIDE TEMPORARY SERVICES DURING INTERRUPTIONS TO EXISTING UTILITIES AS ACCEPTABLE TO GOVERNING AUTHORITIES.
- LOCATE, IDENTIFY, SHUT OFF, AND DISCONNECT UTILITY SERVICES THAT ARE NOT INDICATED TO REMAIN. PROVIDE BRISGS CONNECTIONS AS NECESSARY TO MAINTAIN CONTINUITY OF SERVICE TO OCCUPIED AREAS OF BUILDING. PROVIDE MINIMUM OF 12 HOURS ADVANCE NOTICE TO OWNER IF SHUTDOWN OF SERVICE IS NECESSARY DURING CHANGEOVER.

**ARCONS DESIGN STUDIO**  
architecture planning interiors  
10550 Independence Pointe Parkway  
Suite 300  
Mathews, North Carolina 28105  
P. 704-542-6252 F. 704-542-2330

**BONDURANT ASSOCIATES**  
ENGINEERING & ARCHITECTURE  
444 CRAWFORD STREET  
FONTSMOUTH, VIRGINIA 23031

**NORTH CAROLINA PROFESSIONAL ENGINEERING**  
SEAL  
C. W. HARRIS  
CIVIL E. SHERMAN

**BONDURANT ASSOCIATES**  
CORPORATE ENGINEERING  
LICENSE #C0880

**Harris Teeter**  
Your Neighborhood Food & Pharmacy

**HARRIS TEETER INC.**  
101 CREEDMORE DR.  
MATHES, NC 28105  
PH. 704-544-9004

**HARRIS TEETER #495**  
9345 CREEDMORE RD  
NORTH CAROLINA

PROJECT MANAGER:  
Cathy Sherrill

JOB NO.:  
1026

DR. BY:  
GEP

REVISIONS	No.	Date
	1	10-24-18

SHEET NAME:  
**STRUCTURAL NOTES/DETAILS AND SECTIONS**