

PROJECT MANAGER:  
 KENDRICK STACY  
 JOB NO.:  
 18-0145-02  
 DR. BY:  
 K.L.B.  
 REVISIONS:

No.	Date

**GENERAL NOTES**

- REFER TO SHEET P1.1 FOR ADDITIONAL GENERAL NOTES.
- ALL GAS CONNECTIONS TO EQUIPMENT SHALL HAVE UNIONS, SEDIMENT TRAPS AND GAS COCKS.
- PROVIDE TEES, VALVES AND CAP AT DISCHARGE OF EACH REGULATOR FOR MANOMETER CONNECTIONS TO VERIFY WATER COLUMN.
- PIPE DISCHARGE FROM REGULATOR A MINIMUM OF 10' AWAY FROM FRESH AIR INTAKE WITH RETURN BEND ON DISCHARGE.
- PIPE RELIEF FROM REGULATOR A MINIMUM OF 10' AWAY FROM SPARK IGNITION.
- PAINT ALL EXPOSED GAS PIPING ON ROOF, INCLUDING UNDERSIDE OF PIPING, WITH HIGH GLOSS YELLOW AND LABEL PIPING "STORE SUPPLY" WITH A NON-FLUORESCENT PAINT. (REFER TO ARCHITECTURAL DRAWINGS AND SPECIFICATION FOR ADDITIONAL REQUIREMENTS).
- THE PLUMBING CONTRACTOR SHALL REPAIR ALL HARRIS TEETER MAINTENANCE NOTED GAS PIPING LEAK LOCATIONS WHICH ARE IDENTIFIED WITH "RED" PAINT WITHIN THEIR BASE BID. THE PLUMBING CONTRACTOR SHALL NOTIFY THE HARRIS TEETER PROJECT MANAGER IF THERE ARE NO LOCATIONS NOTED ON THE EXISTING GAS PIPING AT LEAST ONE WEEK PRIOR TO THE BID DATE FOR VERIFICATION OF NO GAS LEAKS WITH HARRIS TEETER MAINTENANCE.

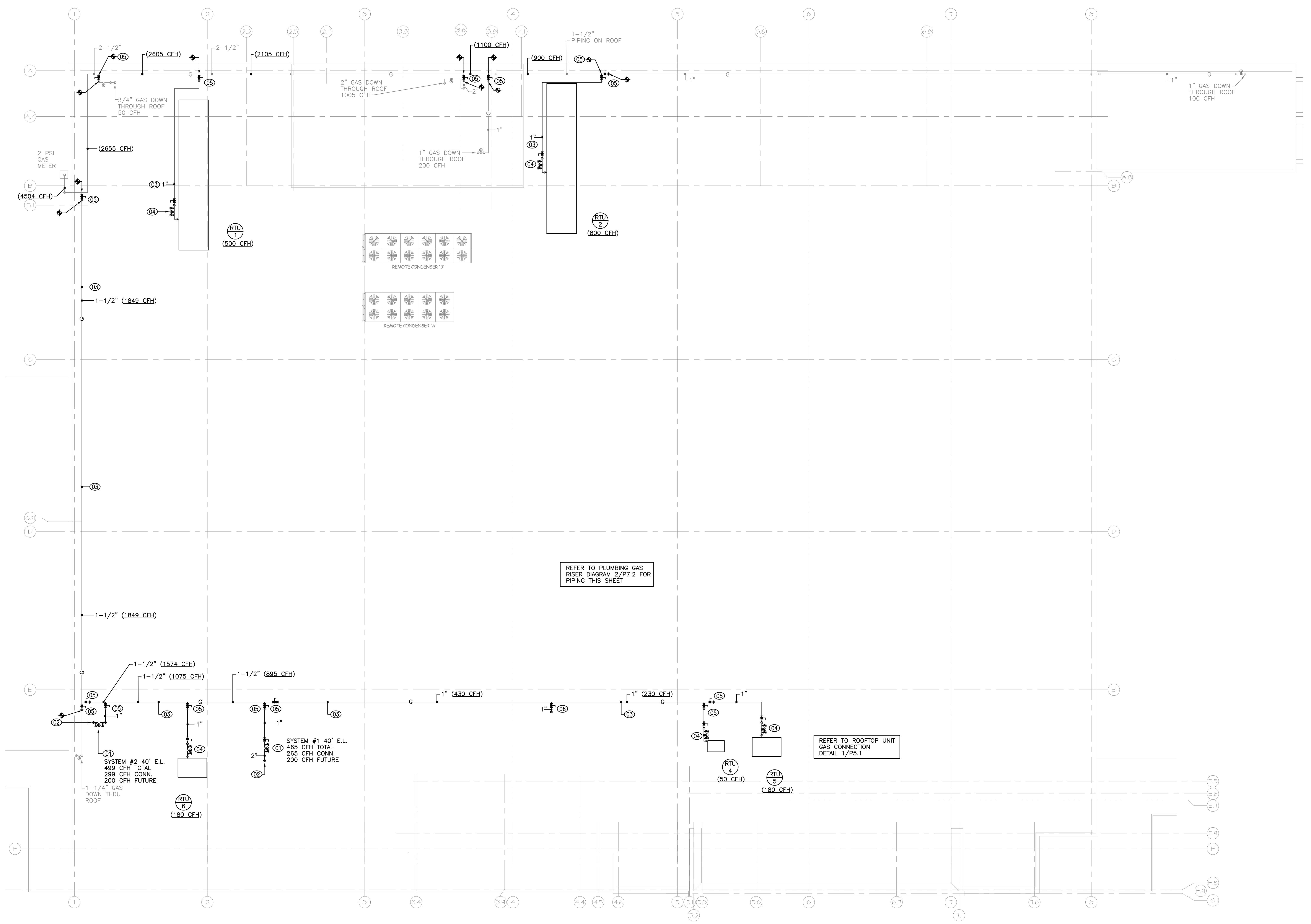
**KEYED NOTES**

- THE ENTIRE GAS PIPING SYSTEM SHALL BE LEAK CHECKED BY THE PLUMBING CONTRACTOR AND WITNESSED BY OCHSNERREFS, P.C. AT THE TIME OF PROJECT COMPLETION. ANY LEAKS IDENTIFIED SHALL BE PROMPTLY REPAIRED BY THE PLUMBING CONTRACTOR.
- REPAIR LEAKS AND DEFECTS WITH NEW MATERIALS AND RETEST SYSTEM UNTIL SATISFACTORY RESULTS ARE OBTAINED. VERIFICATION OF REPAIR OF ALL LEAKS TO BE DONE PRIOR TO REPAINTING OF THE GAS PIPING.
- REPORT TEST RESULTS PROMPTLY AND IN WRITING TO HARRIS TEETER, ARCHITECT AND AUTHORITIES HAVING JURISDICTION.
- PLUMBING CONTRACTOR SHALL RESET/REPLACE ALL EXISTING GAS SUPPORTS AS REQUIRED TO BE LOCATED 8'-0" O.C. AND PROPERLY ALIGNED WITH GAS PIPING.
- ALL NEW AND EXISTING VENTS THRU ROOF (VTRS) TO BE MINIMUM 10' FROM ANY FRESH AIR INTAKE (NEW OR EXISTING). RELOCATE OR EXTEND UP ANY EXISTING VTR'S AS REQUIRED TO MEET CODE REQUIREMENT.

**GAS LOAD (CFH)**

EXISTING EQUIPMENT	LOAD (CFH)
HEATING	1230
WATER HEATER	200
COOKING	275
GENERATOR	1005
EXISTING STORE LOAD TOTAL	2710
DEMOLISHED EQUIPMENT	LOAD (CFH)
HEATING	1080
TOTAL	1080
NEW EQUIPMENT	LOAD (CFH)
HEATING	1710
COOKING	364
FUTURE	600
TOTAL	2874
NEW STORE LOAD TOTAL	4504
INCREASE IN LOAD	1794
NEW 2 PSI SYSTEM AT 400' E.L. (SIZING BASED ON TABLE 402.4(3) OF 2012 NORTH CAROLINA FUEL GAS CODE)	
SYSTEM #1 40' E.L. AT 8" W.C. FOR 465 CFH	
SYSTEM #2 40' E.L. AT 8" W.C. FOR 499 CFH	
(SIZING BASED ON TABLE 402.4(2) OF 2012 NORTH CAROLINA FUEL GAS CODE)	

NOTE: THIS DOCUMENT MAY HAVE BEEN ELECTRONICALLY TRANSMITTED. IF UNSIGNED, IT CANNOT BE FILED FOR PUBLIC RECORD. PUBLIC RECORD FILINGS REQUIRE SIGNED AND SEALED DOCUMENTS.



**PLUMBING GAS PIPING PLAN**  
 SCALE: 3/32" = 1'-0"