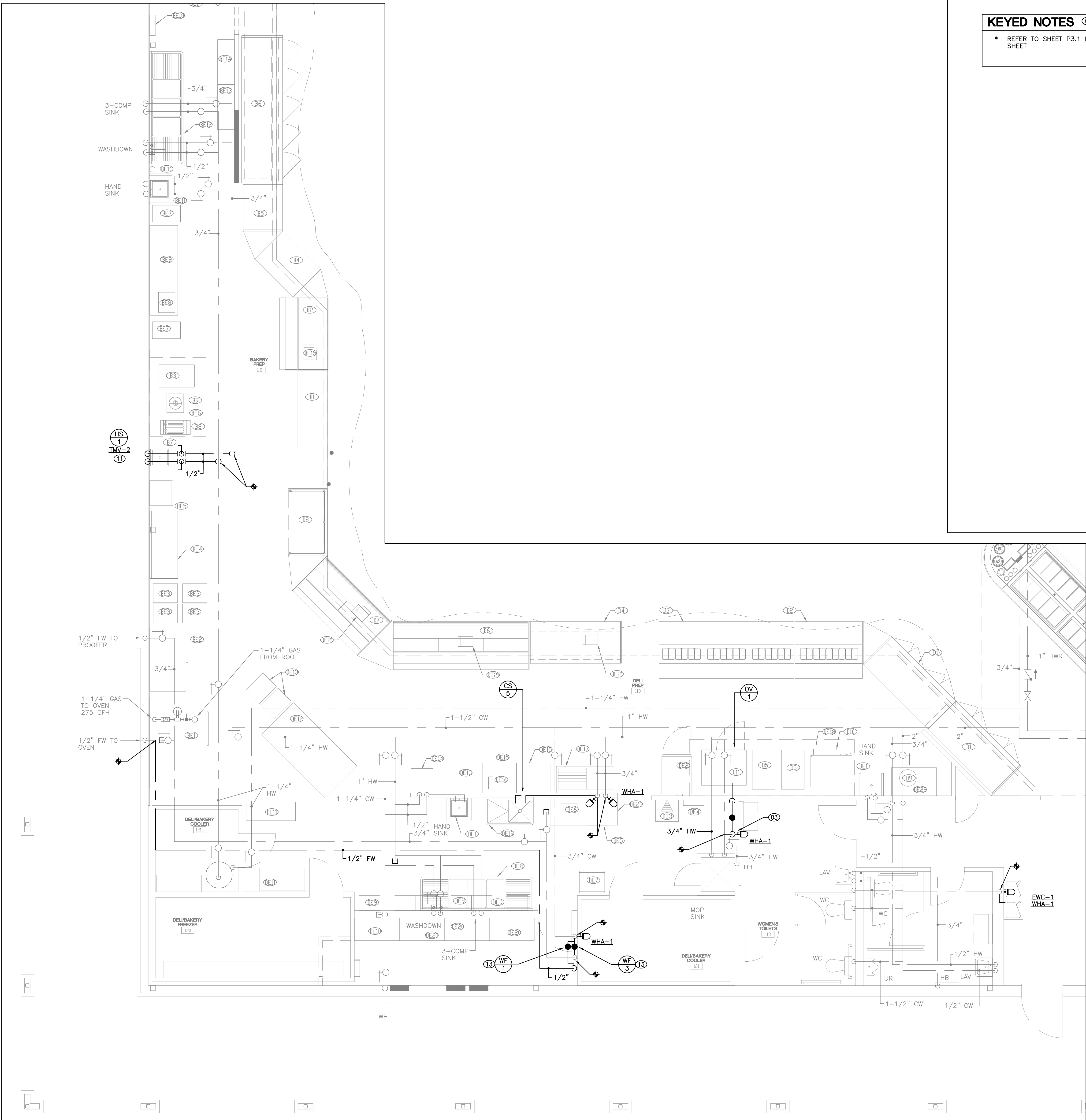


KEYED NOTES ☒
 • REFER TO SHEET P3.1 FOR KEYED NOTES THIS SHEET

NO.	CONVENIENCE FOOD EQUIPMENT	QUANTITY	MODEL #	MANUFACTURER
D1	8' BEVERAGE W/ DOOR	2	D05LP	HUSSMANN
D2	6' SUSHI MERCH	1	Q3-SP-6-6'	HUSSMANN
D3	12' SANDWICH CASE	1	Q3-SP-12-12'	HUSSMANN
D4	8' CHEF CASE SELF-SERVICE	1	Q4-SS-8-8'	HUSSMANN
D5	GAS FRYER	2	GF-720	GLES
D6	12' DELI CHEESE MERCH	1	CR3-D-12-12'	HUSSMANN
D7	8' DELI CHEESE MERCH	1	CR3-D-8-8'	HUSSMANN
D8	PIZZA COUNTER	1	FC-06-360	HUSSMANN
D9	NEW RICE COOKER	1		
D10	OVEN	1	803-ED	PIZZA MASTER
D11	OVEN	1	BV400G VERSA	BAKEX
DE1	HAND LAV.	2		
DE2	UPRIGHT QUICK CHILLER	1	DE175C30	
DE3	RECEIVING DESK - WALL	1	GE11	
DE4	STORAGE	1		
DE5	WRAP	1		
DE6	SCALE	1		
DE7	CHICKEN LANDING TABLE	1	D254(N)	
DE8	3-COMP SINK	1		
DE9	STORAGE	3	D143	
DE10	STORAGE	1	GE31-4S	
DE11	CART	2		
DE12	TABLE	1	B86	
DE13	TABLE	2	B79	
DE14	WRAP	1		
DE15	30X36 TABLE	1		
DE16	SLICER	1		
DE17	1-COMP SINK	1		
DE18	14' EXHAUST HOOD	1		
DE19	1-COMP SINK	1		
DE20	STORAGE	3	GE31-4	
DE21	SCALE	3		
DE22	4' TABLE	1		
DE23	30X72 TABLE	1		

NO.	CONVENIENCE FOOD EQUIPMENT	QUANTITY	MODEL #	MANUFACTURER
B1	7' LA BREA STATION	1		
B2	6' REFRIGERATED MULTI-LEVEL PASTRY MERCH	1		WESCHO
B3	GRIDDLE TOP	1	VULCAN	
B4	58" LP CUSTOM DONUT MILLWORK CASE	1	924RX	JSI FIXTURES
B5	4' ISLA	1		HUSSMANN
B6	5 DOOR ICE CREAM RATED CARVEL & LABREA	1		HUSSMANN
B7	HAND LAV.	1		
B8	GAS FRYER	1	10RASM-1	VULCAN
B9	RANGE	1	ARWR J-13	AMERICAN
BE1	RACK OVEN	1		
BE2	PROOFER	1		
BE3	TABLE	4	B79	
BE4	TABLE	1	T60	
BE5	BREAD SLICER	1	B32	
BE6	7' EXHAUST HOOD	1		
BE7	TABLE	2	B37	
BE8	MICROWAVE	1	D36	
BE9	TABLE	1	T85	
BE10	STORAGE RACK	1	GE1H	
BE11	HAND LAV.	1		
BE12	3-COMP SINK	1	PL3-30	
BE13	STORAGE RACK	1	GE32-4	
BE14	STORAGE RACK	3	GE32-4S	
BE15	SCALE	1		
BE16	DRY CHEMICAL EXTINGUISHER (20lbs)	1	CE69E	



ENLARGED PLUMBING WATER AND GAS DELI/BAKERY PLAN
 SCALE: 1/4" = 1'-0"

NOTE: THIS DOCUMENT MAY HAVE BEEN ELECTRONICALLY TRANSMITTED. IF UNSIGNED, IT CANNOT BE FILED FOR PUBLIC RECORD. PUBLIC RECORD FILINGS REQUIRE SIGNED AND SEALED DOCUMENTS.