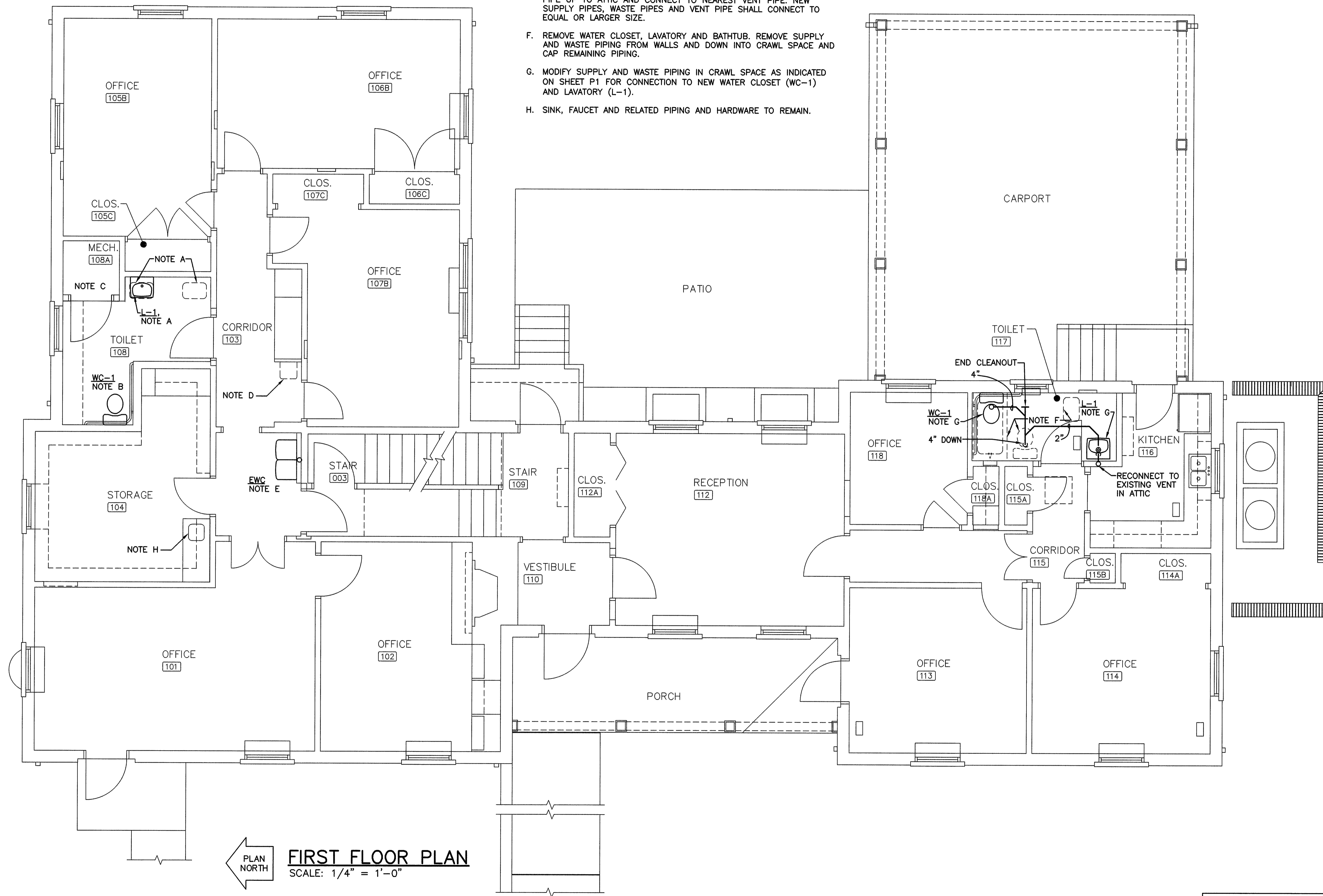


**NOTES THIS SHEET**

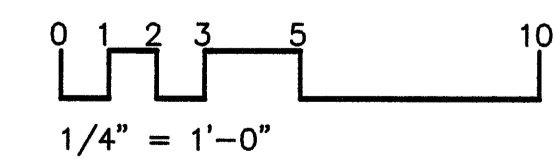
- A. REMOVE LAVATORIES (TWO) IN THIS AREA. MODIFY SUPPLY PIPING AND WASTE PIPING IN WALL TO SERVE NEW LAVATORY L-1.
- B. REMOVE WATER CLOSET IN THIS AREA. MODIFY SUPPLY PIPING IN WALL AND WASTE PIPING IN CRAWL SPACE TO SERVE NEW WATER CLOSET (WC-1).
- C. REMOVE SHOWER VALVES AND SUPPLY PIPING TO BEHIND WALL SURFACE AND CAP REMAINING PIPING. REMOVE SHOWER DRAIN AND P-TRAP TO CRAWL SPACE AND CAP REMAINING WASTE PIPE.
- D. REMOVE ELECTRIC WATER COOLER. REMOVE SUPPLY AND WASTE PIPING TO BEHIND WALL SURFACE AND CAP REMAINING PIPING.
- E. EXTEND WASTE PIPING AND SUPPLY PIPING IN CRAWL SPACE AND UP IN WALL TO NEW ELECTRIC WATER COOLER (EWC). EXTEND VENT PIPE UP TO ATTIC AND CONNECT TO NEAREST VENT PIPE. NEW SUPPLY PIPES, WASTE PIPES AND VENT PIPE SHALL CONNECT TO EQUAL OR LARGER SIZE.
- F. REMOVE WATER CLOSET, LAVATORY AND BATHTUB. REMOVE SUPPLY AND WASTE PIPING FROM WALLS AND DOWN INTO CRAWL SPACE AND CAP REMAINING PIPING.
- G. MODIFY SUPPLY AND WASTE PIPING IN CRAWL SPACE AS INDICATED ON SHEET P1 FOR CONNECTION TO NEW WATER CLOSET (WC-1) AND LAVATORY (L-1).
- H. SINK, FAUCET AND RELATED PIPING AND HARDWARE TO REMAIN.

**ASBESTOS-CONTAINING & LEAD-CONTAINING MATERIALS NOTES:**

ASBESTOS CONTAINING MATERIALS OR PAINTS CONTAINING LEAD SHALL NOT BE USED IN ANY FORM ON STATE PROPERTY (RADFORD UNIV.).  
SEE IMPORTANT NOTES ON SHEET T1 REGARDING ASBESTOS-CONTAINING & LEAD-CONTAINING MATERIALS.

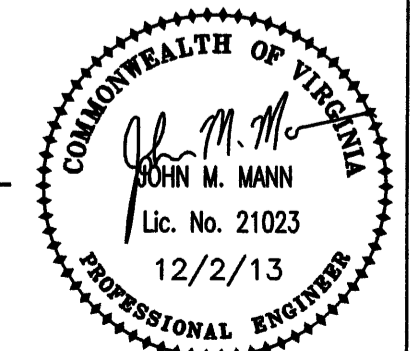


PLAN NORTH  
**FIRST FLOOR PLAN**  
SCALE: 1/4" = 1'-0"



PROJECT CODE: 217-A3217-023

MANN & ASSOCIATES, INC.  
306 Market Street  
Roanoke, VA 24011  
540-344-5513



DATE  
REVISIONS

**RENOVATIONS for BUCHANAN HOUSE**  
Radford University - Radford, Virginia

DESIGNED BY: JMM  
DRAWN BY: RGM  
CHECKED BY: JMM / CBL

**The Architects Alliance Inc.**  
Blacksburg, Virginia  
540-951-4853

PROJECT NO: 125442  
DATE: 11/30/13

**P2**